

WINCHELSEA PARISH MAGAZINE

July 2026



Douglas Strachan's design drawing for the East Window at St Thomas'

You are warmly invited to the

Patronal Festival

of St Thomas the Martyr, Winchelsea



Sunday 5th July 2026

11:00 Festal Eucharist

followed by fresh coffee and homemade cake

16:00 Choral Evensong

the Rector's sherry and port will be served after the service



New Hall Grand Centenary Ball

The New Hall held its Centenary Ball on Saturday 27th June. We sold a total of 98 tickets and the hall looked amazing. A big shout out to the designers and decorators, Richard, Nigel, Rob and Hilary, and to Graham for the lighting. (The hall was bathed in blue and subtle pink lighting which made it look more like an up-market jazz club than a village hall)

The Jo Thompson Trio, featuring Sally Creedon, played us popular tunes from the 1920s until 10.30pm. (They had played at Downing Steet and at a St James' Palace garden party earlier in the week). A big thank you to Jonathan for introducing us to Jo and his band and dealing with everything music related. Mark Russell gave us Charleston lessons before the event and also gave us a refresher session before the night got going. It certainly had a massive impact with lots of people getting up to dance. Thank you Mark!

Thank you to students and tutors at East Sussex College who made us a range of delicious sweet and savoury canapés which they served throughout the evening. They also manned the door, served us welcome drinks and were generally amazing, friendly and professional.

Jeff Jordan, who is head of catering at the college (and now lives in Winchelsea) said he was proud of his students and

they really enjoyed the experience. The fizz we all drank on arrival was *Charmat* from Charles Palmer Vineyard which was donated to us by Charles, Sally, Chantal and team up at Charles Palmer. Thank you all.

Thanks also need to go to our small team of organisers, Angela, Mary, Rosemarie and Ali. Last but not least, a thank you to our sponsors (individuals and organisations in the town) who enabled this event to happen. Massive apologies if we've missed anyone out; it was a real Winchelsea team effort. One hundred years on, the hall has never looked better and it reminds us how lucky we are to have such a valuable community space and people who care enough to contribute to its ongoing success.

Happy 100th Birthday Winchelsea New Hall!



100 Club

The winning number for the 100 Club for May is 10 and for June is 35. Congratulations to the winners of the £100 prize!

New Hall Management Committee: Rob Mortimer, John McGeown, Sergio Rebecchi, Mary Tidyman, Rosemarie Roberts and Ali Casey

The London Handel Players



Director **Adrian Butterfield** violin
Julia Doyle soprano



Telemann Handel Locke Vivaldi Purcell Bach

Saturday 4th July at 7.30pm



St Thomas' Church
Winchelsea
TN36 4EB

Winchelsea Arts

Tickets online at winchelsea-arts.org.uk
and at the door

£25



[Click here](#) to see the full 2026-7 Season programme

[Click here](#) to see the concert programme notes

winchelsea-arts.org.uk



July Garden Openings

Eleven Winchelsea gardens will be opening under the National Garden Scheme on Saturday 18th July from 11am to 5pm, and on the afternoon of Sunday 19th July for the Friends of the Memorial Hospital, Rye from 2pm to 5pm.

Group admission costs £10. On Saturday you can either pay by cash at any of the garden gates or use contactless at the Court Hall. Your entry ticket doubles up as a map to guide you to the different gardens. On Sunday you can pay by card at the New Hall or with cash at garden gates.

In 2025 the National Garden Scheme was able to donate a record £3,875,596 to good causes. The donations help thousands of people living with cancer, Parkinson's, poor mental health, or the pressures of unpaid caring, by supporting the nurses, health professionals and case workers who care for them. Donations also supported gardeners and gardens for health. 3,500 garden owners open their gates nationwide and 600+ volunteers support them.

WINCHELSEA'S SECRET GARDENS



findagarden.ngs.org.uk/garden/

The Winchelsea garden opening for St Michael's Hospice in June attracted over 350 visitors and raised £3,854 - the highest figure in their season so far. Gardens will open for the Hospice at Cooden Beach and Little Common on Tuesday 7th July and Hastings on Tuesday 14th July.

SEA SUNDAY

12th July 2026

10:30AM
Pett Level

Outdoor Ecumenical Service
*ending with the blessing of the PLIRB
boathouse, rescue equipment and volunteers*



Supporting
The Mission to Seafarers
and celebrating
Pett Level Independent
Rescue Boat



For those in peril on the sea...

Nathanael writes: Each morning as I draw back the curtains to a new day, the upstairs view from the Rectory in Winchelsea affords me a spectacular view across the sea.

With wind turbines leading out to Dungeness on the left and a hazy horizon of sea fading out towards Fairlight as I look to the right, I have a marvellous vista to enjoy from the comfort of my armchair.

Living by the sea was never part of my childhood yet the character of rural coastal communities has shaped me so much in these last few years that ‘parishes by the sea’ became a firm criterion in my search for an incumbency.

I have found the presence of tidal waters to be of inspiration to my own spirituality, and I know many people find they are closest to God, or the Divine, when immersed in the beauty of creation.

This month churches are invited to celebrate Sea Sunday. The Mission to Seafarers lead on this annual event and encourage churches to support their ministry and pray with them. For 2026 they have set the theme as “Harbours of Hope: The Church Alongside Seafarers”, inspired by Matthew 25. This theme celebrates the local church as a place of welcome, refuge, and hope – inviting congregations to reflect on how they can stand alongside seafarers through prayer, hospitality, generosity, and justice.

As rural coastal communities we have a daily reminder of how the sea shapes our landscape, culture and commerce. We also celebrate a heritage and history defined by the sea and seafarers. As such, we have every opportunity to give thanks, seek blessing and pray for protection and safety.

That great and rousing Navy Hymn, *Eternal Father Strong to Save*, calls the faithful to pray for those whose work is often unseen or forgotten over the that hazy horizon.

Looking out from my armchair, I am often reminded of this Prayer of St Aidan that speaks of the ebbs and flows of tidal waters being a pattern of life in God:

*Leave me alone with God as much as may be.
As the tide draws the waters close in upon the shore,
Make me an island, set apart,
alone with you, God, holy to you.*

*Then with the turning of the tide
prepare me to carry your presence to the busy world beyond,
the world that rushes in on me
till the waters come again and fold me back to you.*



Winchelsea Fete

It's only a few weeks to go before this year's Fete and Fun Dog Show on 15th August. The Fete is an important fund raiser for the New Hall and for other groups within the town.

If it's going to be a success, we are going to need lots of help. The event runs from 1 to 4pm, so if as many people as possible can spare an hour to lend a hand, there is still plenty of time to enjoy the afternoon.

And there will be lots to enjoy. You can buy plants and tools at the Garden Society stall, try your luck at the notorious FOAM bottle stall, search for buried archaeology on the WAAHS stall, try your skill on the Rotary Club Stall, Splat the Rat, the Human Fruit Machine and the National Trust's Coconut Shy.

There will also be lots to tickle your taste buds: Afternoon Tea in the New Hall, the Church will be selling Jams and preserves, the Cricket Club homemade cakes and the Little Shop Community Trust ice creams, together with May Farm's delicious fruit ices. Charles Palmer will be providing their wonderful Fizz and the New Inn, local Ale and Burgers.

Live music will be provided by Geoff Sapsford and there will be a traditional Punch and Judy show. The Museum will be having a stall, there will be a creative area for children, craft stalls and of course our fun dog show.

To make all this happen, we need volunteers, to help with a variety of tasks, before, during and after the fete. So, I will be shamelessly twisting arms, over the next few weeks.

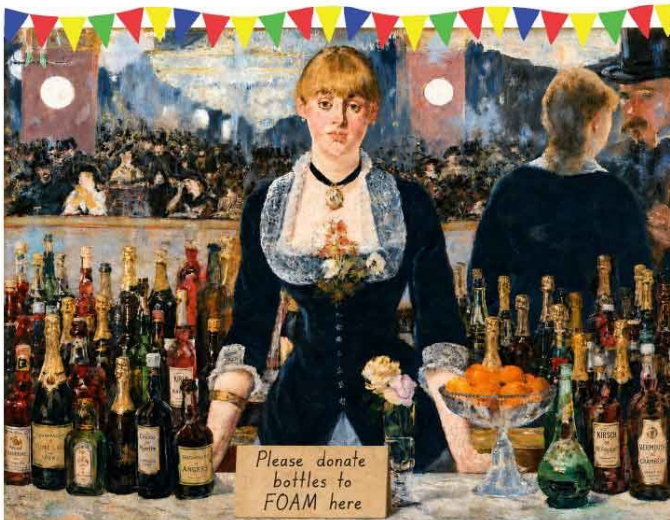
Whether it's an hour on the human fruit machine, or splat the rat, helping with parking or on the gate, don't miss the fun, please get involved, you can contact me on the email address below.

Chris Chappell, on behalf of the New Hall
chriswinchelsea@icloud.com

Help us raise money to maintain the town's ancient buildings & gates

Winchelsea Fete August 15th

FOAM Bottle Stall



Please spare a bottle or two of your best plonk!

**Please drop your bottles off at either
Lines End or Wren Cottage**

winchelsea.com/foam



Winchelsea Beach July Events

Mothers' Prayers

Tuesday 7th at *Solstice*, Sea Road at 10am

Bingo Afternoon

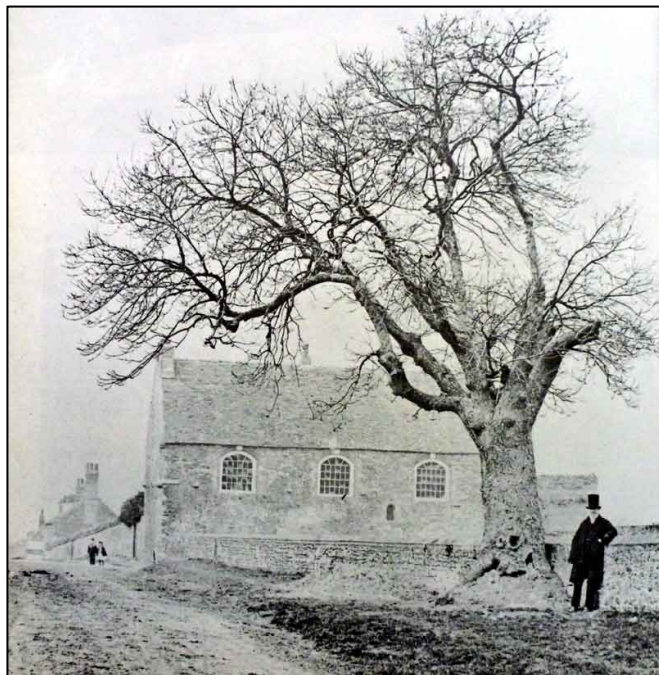
on Wednesday 15th - Bingo and afternoon tea in Winchelsea Beach Community Hall at 2.30 for 3pm.

Please bring raffle prizes

Fellowship Lunch

Friday 31st Fellowship Lunch at 12.30 for 1pm in Winchelsea Beach Community Hall . Please contact Mary Parker 07927 107678 to book. Donations will be for Demelza House.

winchelseabeach.org.uk



Wesley's Tree 1860

Chapel Anniversary

You are warmly invited to come to the Chapel Anniversary on Sunday 19th July with hymn singing under the 'Wesley Tree' at 2.30 before the service in the Methodist Chapel in Rectory Lane at 3pm.

We are delighted that Rev Malcolm Peach will be leading the service which will be his last in this part of the country, before his move 'up North'.

Do join us if you can. You will be very welcome.

winchelseachapel.org





St Thomas Lighting Project UPDATE

The PCC of St Thomas' are pleased to share that contractors leading the rewiring and lighting project will begin work on the church in July.

The initial stages of the work will include the removal of old lighting fixtures and the installation of temporary lighting for the building. There will be no disruption to church use and accessibility at this point.

Look out for further updates about the project later in the summer, and a forthcoming pastoral letter regarding the planned autumn-time church closure.

Thank you for your continued support and generosity.



Second Wednesday

On Wednesday 8th July we are delighted that local resident Brian Leonard will be giving a talk, "From Wilson to Starmer - A Civil Servant's View".

By way of introduction, Brian writes.....

"Come for an amble around the corridors and characters of Whitehall life over the last five decades. For most of those years Westminster government plodded along, with new methods of working forced upon it as the world around changed. Things became more changeable and frantic. But the underlying social democratic system and principles endured through the years of Thatcher, Major, Blair, Brown and Cameron keeping broadly the same show afloat.

Then suddenly a cataclysmic mêlée of events and sea changes in public mood has created an earthquake in politics and made the turmoils of the earlier years look mild.

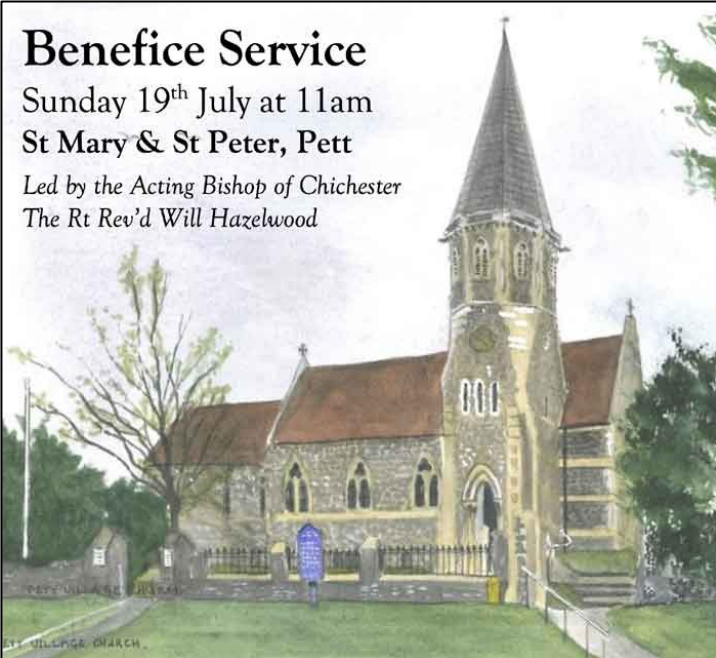
Brian Leonard served as a civil servant for much of this period, from the antiquated quaintness of *Yes Minister* into the more modern but more chaotic era.

This will be a talk on personal experiences from stationery cupboards and strippers to close working with numerous ministers on various policy areas with their occasional achievements and very recognisable mishaps. And, what does the future now look like?

Taking place in the New Hall, doors open at 2.15 for 2.30pm start. Free for members (annual membership £15), £5 for guests and visitors. Homemade afternoon tea £2. And of course, Tessa's raffle.... We look forward to welcoming you.

Please note, there is a recess in August and we reconvene on 9th September when Simon Parsons will give us "Rye Heritage Centre: Who, Why, How and What"

Benefice Service
Sunday 19th July at 11am
St Mary & St Peter, Pett
*Led by the Acting Bishop of Chichester
The Rt Rev'd Will Hazelwood*



ST MARY & ST PETER CHURCH



Garden Society Rose Show

Our annual Rose Show took place on the 6th June during the church market. We had 17 entries, way down on last year. This was probably because many of the roses had flowered early during the hot weather, and had been bashed by the strong winds and rain before the show.

The judge was John Dunk and he picked Jennifer Sutherland for the Rose cup, Carol Cockcroft for the Clematis cup, David Page for the Iris cup and finally Judith Payne for the Sweet Pea cup.

Thank you to everyone who entered and to Gavin for helping us with the tables.

Sally Rhodda



Have you a moment to answer a couple of questions?

The Little Shop Customer Survey.

As the transition to a community business continues at pace, this month our team of volunteers carried out a survey, to find out a little more about our customers.

Over two days, [a Wednesday and Saturday] they spoke to 268 customers.

Our objective was to discover where our customers come from, how often they visit the shop, what they spend, the type of purchases they make, and to record any lost sales, [items that they would have brought, if they were available].

Clearly this sort of information will be invaluable when it comes to future marketing and ensuring we are stocking the right products.

During those two days there were 319 customer transactions, which demonstrates just how important the shop is to Winchelsea and the surrounding area. We monitor daily till transactions, and this number is typical for these days of the week.

We are now busy analysing the survey data, but we can already see that almost half our customers [49%] live outside of Winchelsea, many are from Icklesham and Winchelsea Beach, others are working in town, and some are visiting or passing through.

We can also see that slightly more men [54%] visited the shop than women and that just over half [52.5%] of all customers were over 60.

If you visited the shop over the two days and completed a questionnaire, thank you. We will share more information when we have it.

The Shop Steering Group

winchelsea.com/shop

Help make it happen!

Winchelsea Safari Supper

A sociable evening, Three courses.
Two homes ... One great cause.

Good food.
Great company.
Supporting
the Little Shop!



1 We start together!

Welcome drink
& starter at
the New Hall



2 Main course
in a lovely
Winchelsea
home

New people,
new place,
great food!



3 Pudding in
another lovely
Winchelsea
home

Mix,
mingle,
make new
friends!

4 We finish
together
Cheese, coffee
& a raffle at
the New Hall

A great evening.
A great cause.



WE NEED YOU!
✓ Guests
✓ Hosts
✓ Or both!

YOUR EVENING INCLUDES:

- A welcome drink & starter at the New Hall
- Main course & pudding in different Winchelsea homes
- Cheese & coffee back at the New Hall
- £35/40 per head – includes food, some wine & soft drinks
- Raffle in aid of the Little Shop (Little Shop vouchers)



Date options: 12 Sept 2026 or 15 May 2027

ARE YOU INTERESTED?

Please complete our quick,
non-binding Expression of Interest
(takes less than 90 seconds) →

OR VISIT:

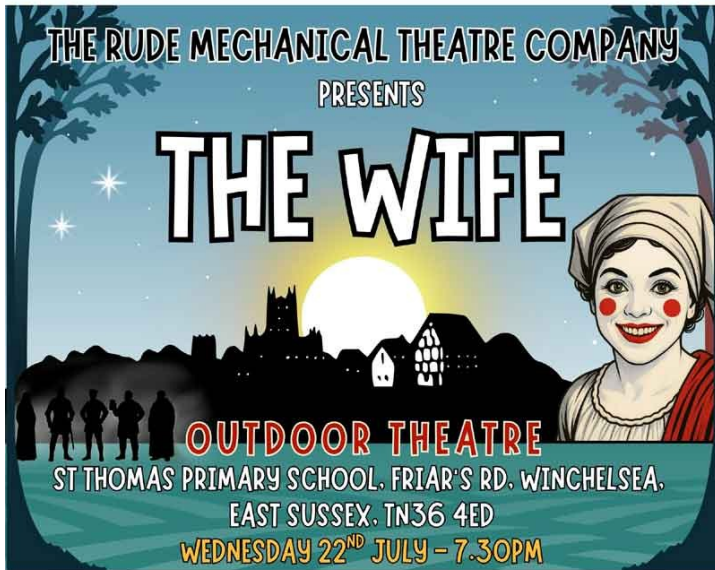
<https://forms.gle/nepYo7tjkWn14R759>

SCAN ME!



Let's make it a night to remember – for a cause that means so much to our town. ❤️

'HIGHLY ENTERTAINING' – TIME OUT



TICKETS FROM THE RUDES.CO.UK

The Rude Mechanical Theatre Company return in summer 2026 with *The Wife*, their original musical play inspired by Chaucer's *Wife of Bath*. First performed in 2003 and later transferred to London, the production returns in a newly reimagined version with an expanded musical score.

Set on the spring roads from Southwark to Canterbury, the play centres on Alyson of Bath, a woman who has survived by wit, appetite and sheer force of character in a world stacked against her. Before telling her tale, she speaks of her five husbands, a life lived through necessity as much as desire. Her story then unfolds into a fable of courtly love, punishment and transformation, as a young knight is sent in search of the answer to a question that refuses to settle.

Performed outdoors by a small ensemble of actor-musicians, *The Wife* blends song, verse and physical comedy into a vivid piece of storytelling. Laughter, argument, music and tenderness sit side by side, while deeper questions surface about love, power and what it takes to endure.

therudes.co.uk



New Inn Pétanque Challenge

Since the beginning of June, six brave teams have been pitching their skills in an effort to become the Winchelsea Pétanque Champions.

With a variety of team names - including 'The Winchelsea Boozers', 'Cloud Jumpers', 'U-Bahn', 'Winklepickers', 'The Boules Brothers' and 'The Boules Crackers' - teams were busy practicing the art of pétanque leading up to the matches. Most of the team members had never played before. During the contest the weather has been perfect. Although competitive it's been great fun, and brilliant to see so many people coming along to watch and support each match. Most of the games have been very close with 'nail biting' finishes.

The contest has moved through various stages from group play-offs to semi-finals, with a total of nine matches played to date. There are still two matches left to play with the 'Winklepickers' and 'U-Bahn' due to play against each other for third and fourth placings.

The final match will be held on Saturday 4th July commencing at 5.15pm. where 'The Boules Brothers' will be playing the 'The Boules Crackers' for the title of 'Pétanque Champions'. Please come along and support all matches - it's great entertainment.

The 'Winklepickers' and 'U-Bahn' are due to play against each other for third and fourth placings on Sunday 5th July at 6pm. Full results will be published in the August magazine

The picture taken at the semi-final match between 'Winklepickers' and 'The Boules Crackers'

The Next New Inn Pizza Night

We are pleased to announce our next special pizza night is planned for Monday 13th July. Pizzas can be ordered to eat in or take away. Just pop in or give us a call to place your orders. 01797 226252. Thank you for all your support.

CALLING ALL **JAM-MAKERS**



THE CHURCH IS LOOKING FOR
DONATIONS OF HOMEMADE
JAMS, CHUTNEYS & PRESERVES
FOR THE SUMMER FETE

Labelled jars can be left on the Rectory doorstep
or collection can be arranged. Thank you.



Time for a bit of weeding

I'm sure many of us have spent a fair amount of our time this month in the garden weeding, as fast as we pull one weed out, another seems to take its place.

The same is true of our three medieval gates, they are excellent places for weeds and woody climbers to take root. Left unchecked, their roots loosen the mortar, push stones apart and allow water ingress, damaging the buildings' structure.

Not all this is apparent from the ground. We use a drone to photograph what's happening on top, [thank you Jonathan Murphy]. This footage is not only useful to determine whether the weeds need clearing, but also to gain the necessary permission from Historic England.

Footage captured this Spring showed that it was time for the gate's regular haircut.

Winchelsea Corporation is responsible for the care of the town's three gates, which are all scheduled ancient monuments, so great care must be taken when maintaining them. Ideally that work needs to be performed without disrupting the traffic that passes under these thirteenth century structures.

The Corporation's preferred contractor is a local specialist company, Hawk Abseiling. As the name suggests, they are able to tackle the work without using expensive scaffolding or closing the road. They are also approved by Historic England, and have the necessary experience, having worked at Bodiam Castle and on Rye's Landgate.

The gates' regular trim took place over three consecutive days in June: you might have seen the three men involved at work.

Of course all this costs money, so its great that within the town we have FOAM, who worked closely with the Fabric and Fundings teams at the Corporation and were able to contribute 100% of the cost. So, a big thank you to all those residents in Winchelsea who are FOAM members and support their fund-raising activities.

*Chris Chappell
on behalf of Winchelsea Corporation and FOAM*

Photo generated by AI



Watching the Detectives

Don't be painting your nails while they're dragging the lake. In the tradition of detective fiction dénouement Winchelsea's mystery author, Guy Fraser-Sampson addressed an intent Lit. Soc. audience promising to develop his previous presentation, focussed on the genre's Golden Age which plucked miscreants from country house weekend parties or the passenger lists of luxury cruise liners and trans-continental trains.

These settings, and their hierarchy of domestic servants, had inspired the teasing title of this talk "*The Butler Did It*". Guy's personal contribution to this field included "*The Hampstead Murders*" quintet, widely praised for quirky originality, but yielding a revelatory Raskolnikov moment when the author revealed a complex psychological motivation driven by regret at being unable to afford a house in that suburb. New Inn opinion afterwards inclined to the view that Raskolnikov had shown more remorse!

The title phrase is attributed to Mary Roberts Rinehart's 1930 thriller "*The Door*" containing the disclosure but not the actual phrase. Choosing such a perpetrator broke one of "*The Rules of Detective Fiction*" penned by S.S. Van Dyne, the nom de guerre of the foppish dandy, Willard Huntington Wright, whose own sleuth, Philo Vance, was an amateur gentleman detective who could have conceivably just

stepped through the patrician portals of the city's Knickerbocker Club.

The mellifluous comic and panel game exponent, Frank Muir, claiming authorship of several catch phrases confessed to scrawling "*the butler did it*" over all the books in the crime fiction section of his local library. Fiction could sit uncomfortably close to crime fact and even Winchelsea's serious Contract Bridge enthusiasts were unsettled by the account of the unhinged Roaring Twenties Kansas City Murder where a wife, who shot and killed her husband and Bridge partner, was found "Not Guilty" on the grounds that the husband had played his hand ineptly.

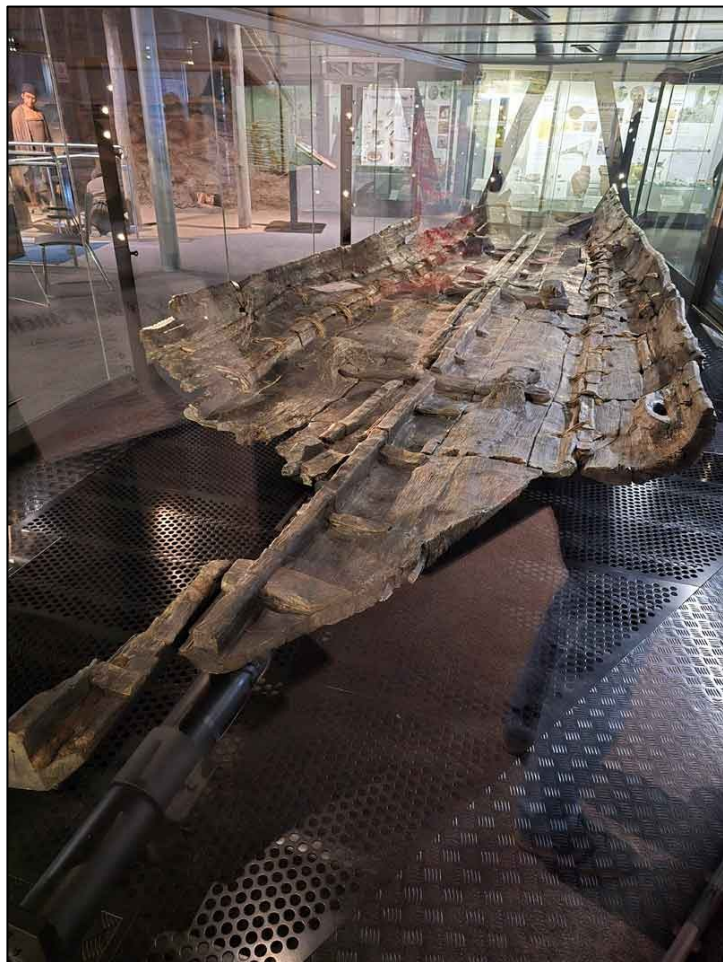
Resident evil spirits may have featured in Tolleshunt D'Arcy in Essex, home of crime fiction writer Margery Allingham for three decades, as the real-life White Farm Multiple Murders occurred there in 1985 leading to the conviction of Jeremy Bamber.

Raymond Chandler derided these cosy Golden Age mysteries exemplified by Dorothy L. Sayers, Agatha Christie and Margery Allingham in favour of the gritty, noir register of Philip Marlowe and asked in which direction should crime fiction go? For any wannabe writers in the audience, our speaker provided a helpful "Emergency Pack" for plotting comprising: a tramp, an identical twin, an evil financier, a Chinaman.

There were plaudits for contemporary writers like the whimsical Christopher Fowler who invented the "Perfect Match" detective duo of *Bryant and May* from *The Peculiar Crimes Unit* and the Joycean James Ellroy, who honed his telegraphic, staccato style in his "*LA Quartet*" most notably "*The Black Dahlia*" and "*LA Confidential*".

During the lengthy Q&A the audience adopted the enquiring Watson role concluding a comprehensive presentation whose depth and subtlety far surpassed Claude Rains' injunction at the end of *Casablanca*: "*Round up the usual suspects!*"

Bill Doherty



A Journey Through Time

On Saturday 13th June, members of the Winchelsea and Area Archaeological and Historical Society (WAAHS) travelled to Dover to explore two of Britain's most remarkable archaeological treasures: the Roman Painted House and the world-famous Bronze Age Boat. Guiding the group was archaeologist Dr Andrew Richardson, a familiar figure to many in Winchelsea through his previous work in the town.

Our first destination was the Roman Painted House, widely regarded as the finest and most complete Roman domestic

building discovered north of the Alps. Hidden beneath the modern streets of Dover for nearly fifteen centuries, the site came to light entirely by accident during construction work for a multi-storey car park in 1970. What followed was one of the most significant archaeological excavations in Kent, undertaken by local archaeologists and dedicated volunteers - including a teenage Andrew Richardson.

Dating from around AD 200, the building still boasts walls standing to shoulder height and preserves some of the most spectacular Roman wall paintings ever found in Britain.

Centuries later, during the Saxon period, part of the site was reused as a rubbish pit. While perhaps less glamorous than its Roman origins, this later activity proved to be an archaeological blessing. The discarded objects left behind created a rich deposit of Saxon material, providing valuable insights into life in post-Roman Dover.

Today, a surrounding gallery displays many of the artefacts recovered from the site, including jewellery, pottery and everyday objects that help tell the story of successive generations who occupied this corner of Kent.

After lunch, a short walk brought the group to Dover Museum and another archaeological marvel: the Bronze Age Boat. Discovered only a short distance from the museum during construction work, this extraordinary vessel dates to around 1500 BC, making it one of the oldest known seagoing boats in the world.

Preserved for over three millennia in waterlogged soil, the boat survives because the damp conditions prevented the timber from decaying. Today it is housed within a carefully controlled environment where temperature and humidity are constantly monitored.

The conservation techniques developed during its preservation helped pioneer methods later employed in the treatment of the Tudor warship *Mary Rose*.

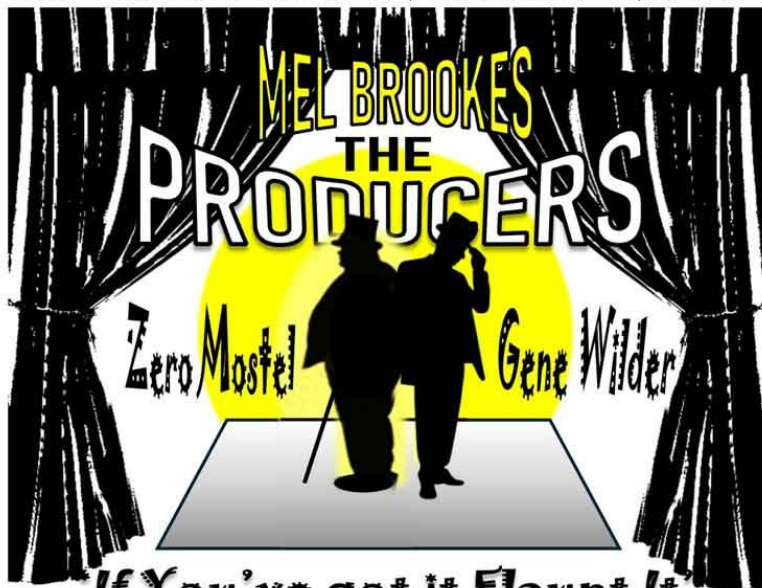
Jerry Moss



WINCHELSEA FILM NIGHT

In conjunction with Winchelsea New Hall

'ONE OF THE FUNNIEST MOVIES EVER MADE'



SATURDAY 18th JULY 6.30 for 7.30 SCREENING

Admission Free
Refreshments, Pay Bar.
Come early, enjoy a drink or two.



Icklesham Parish Council

Annual Parish Meeting

The Annual Parish Meeting was held at Icklesham Memorial Hall on 11th May to a packed audience of residents. The Council delivered a presentation highlighting the wide range of projects, initiatives, and achievements undertaken throughout the year. The Parish Council also presented Community Awards to residents who have gone above and beyond in their service and contribution to the parish over the past year.

We were pleased to welcome Steve Hill from Pett Independent Rescue Boat, who gave a really informative presentation outlining the organisation's recent projects and achievements, as well as the vital work it undertakes within our local community. His presentation provided a fascinating insight into the range of emergencies faced by the crew and the dedication required to respond to them.

We are extremely fortunate to have such a highly respected independent rescue service on our doorstep. Our sincere thanks go to Steve and the entire team for their commitment to keeping residents and visitors safe and we will continue to help when we can with funding.

The meeting also featured a presentation from Philip Merricks MBE, who spoke about the efforts of a dedicated

group of local volunteers working to protect and preserve the iconic Grade II listed Mary Stanford Lifeboat House.

Philip explained how community-led action has helped safeguard this important local landmark, which had received limited support from government agencies. His presentation was a powerful reminder of what can be achieved through determination, collaboration, and community spirit. We extend our thanks to Philip and everyone involved in this remarkable project.

Concerns Over Toilet Transfers

Although Rother DC Councillors voted in September 2025 for the transfer of freeholds for the public toilets in Winchelsea and Winchelsea Beach the Legal Department at Rother are dragging their feet and we are still waiting for the documentation to be sent to us. We are chasing on a monthly basis and Lorna Ford the CEO of RDC is well aware of the situation. We hope to have some more concrete updates to share in the near future.

Campaign for Safer Roads

Improving road safety is also high on the Council's agenda and Councillors are currently compiling a list of roads across the Parish that they believe would benefit from a reduced 20mph speed limit. The proposals will form the basis of a campaign to East Sussex County Council aimed at making roads safer for residents and visitors alike. We are working with our new East Sussex County Councillor Daniel Bradley who is keen to help the Parish Council with this.

Upcoming Projects in Icklesham

The Parish Council is currently undertaking repairs to the fingerpost located at the junction of Laurel Lane and Workhouse Lane and in addition we will be repainting the green bus shelter at the Goldhurst Green junction over the coming weeks as part of its ongoing maintenance programme.

The Parish Council is also progressing plans to install a bench at the Manor Close bus stop. However, the project is currently awaiting the necessary legal licences from National Highways before work can proceed. We will, of course, keep residents informed of any developments and provide further updates as they become available.

Upcoming Meetings

Monday 13th July – Planning Meeting followed by Full Council Meeting 6.15 pm at Winchelsea New Hall.

Monday 27th July – Planning Meeting 6.15 pm at Winchelsea Court Hall.

Please remember IPC are here to represent you and welcome your views on any matter. Please send your views and requests to clerk@icklesham-pc.gov.uk or write to PO Box 148 Winchelsea TN31 9FP 07714 169901

LIFEBOAT HOUSE FUNDRAISER

MEET ON THE LEDGE



"A FOLK ROCK FAN'S DELIGHT" (ROCK AND REEL MAGAZINE)
"MASTERFUL INSTRUMENTATION... GLORIOUS HARMONIES" (FOLKING.COM!)

SAT 4TH JULY 2026 **WHITEROCK THEATRE HASTINGS**

BOX OFFICE 01424 462280



RAISING MONEY FOR
THE RESTORATION OF
THE MARY STANFORD
LIFEBOAT HOUSE

MORE INFO:
MOTL.CO.UK



Sheep, Marsh and Wildlife

Members of the Winchelsea Conservation Society (WCS) gathered at the Lower Court Hall on Saturday 30th May for the Society's Annual General Meeting, followed by a fascinating illustrated talk from local sheep farmer Tony Pierce on the unique relationship between Romney sheep, Romney Marsh and the rich wildlife that depends upon them.

A lifelong Sheep Farmer (or shepherd) and Director of the Romney Marsh Sheep Breeders Society, Tony drew upon more than 46 years of farming experience on Romney Marsh, Rye Harbour and Camber to provide a compelling insight into one of Britain's most distinctive agricultural landscapes.

Describing sheep farming as being "in my DNA", Tony explained how he first became involved in the industry at the age of 14 when he volunteered to help a friend. What began as a teenage hobby quickly developed into a lifelong passion, one now shared by his daughter, Faye, who is following in his footsteps.

Tony explained that Romney sheep evolved on the wet, low-lying marshes of Kent and Sussex and are renowned for their

resilience, particularly their resistance to ailments such as foot rot and internal parasites. Their role, however, extends far beyond livestock production. The Romney Marsh landscape has been shaped by centuries of traditional grazing. Much of the grazing land has never been artificially fertilised, with sheep naturally recycling nutrients through their manure. This in turn supports a rich diversity of insects, forming the foundation of a food chain that sustains resident, overwintering and migratory bird populations.

Sheep also play an important role in maintaining the Marsh's network of drainage ditches. By grazing vegetation along ditch margins, they help prevent the encroachment of invasive plants, creating favourable conditions for species such as the water vole. Tony noted that the recent recovery of water vole populations has also been assisted by efforts to control invasive American mink, one of the species' principal predators.

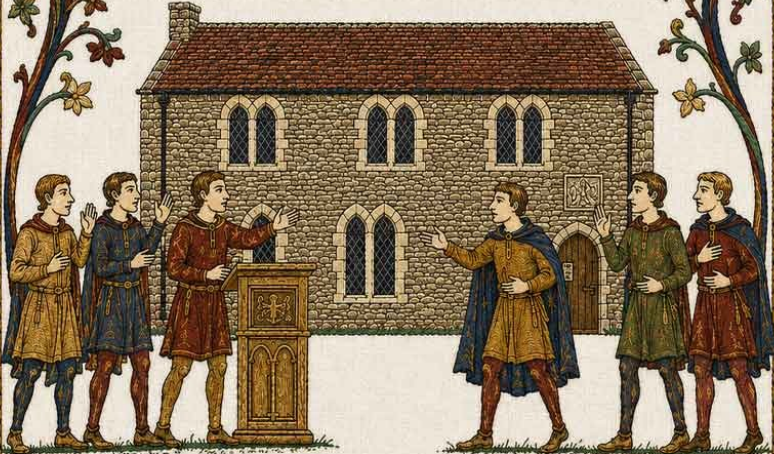
Romney sheep are known for their dense, lustrous fleeces, historically prized for their durability and versatility in the textile industry. A member of the audience even raised the intriguing possibility that Romney wool may have contributed to historic works such as the Bayeux Tapestry.

While Romney sheep continue to produce high-quality lamb and mutton, consumer demand remains relatively subdued within the UK, where pressure for low food prices often disadvantages premium products. However, Tony highlighted a growing market for Romney lamb within both British and French halal sectors, offering new opportunities for producers.

Jerry Moss



THE GREAT DEBATE



SATURDAY
OCTOBER 24TH



The Great Debate

Part of Winchelsea's Festival of History this October

For the first time since it was made, the Bayeux Tapestry is returning to England this autumn. To celebrate its arrival, there will be a rich programme of events in Winchelsea. FOAM's contribution is the Great Debate, to be held on 24th October in the Lower Court Hall.

When Edward the Confessor, the last reigning monarch of the House of Wessex, died childless in January 1066, he left three main contenders for the English throne: his brother-in-law, the Saxon Harold Godwinson, a Viking, Harald Hardrada king of Norway, and a Norman, William the Duke of Normandy. After three hard fought battles in four short weeks, two were dead and one was King of England.

All three men believed that they had a right to be King. But which had the best claim to the crown and who would have made a better king of England? Imagine if all three could step out of history and argue their case. Who would you support and what questions would you ask them?

Well, FOAM is providing an opportunity for you to do just that. Three eminent residents will attempt to secure your vote, combining historical fact, with a healthy dose of spin, cunning and flattery and, as this is a FOAM event, you can expect a healthy dose of theatricality and fun.

Presented in the format of a modern TV election debate, our audience, having listened to the arguments, asked questions, and fuelled by a light supper of fine Normandy food and drink, will decide who they would like to make their King: the Saxon, the Viking, or the Norman.

There will be two performances, one on the Saturday afternoon at 2.30pm and a second in the evening at 6.30 pm.

Tickets £15 each - which includes food - will go on sale to FOAM members early in July, and to everyone else at the end of the month.



Book request

We're in need of fresh stock for the Church bookstall.

If you have any hardback fiction or non-fiction you could let us have to sell for Church funds, we'd be very grateful.

Contact Howard Norton 01797 226524
howard@rjreview.net



WINCHELSEA BEACH
COMMUNITY
ASSOCIATION



INVITES YOU TO JOIN US FOR A

Quiz Night with **Burger & Chips**

Saturday 4th July - 7 for 7:30

Teams of up to 6

Tickets £14 each

Book in advance from

Mary - 07927 107 678

BRING YOUR OWN DRINKS!

WINCHELSEA BEACH COMMUNITY HALL,
SEA ROAD, WINCHELSEA BEACH, TN36 4NA

UK REGISTERED CHARITY: 278165

What's On Weekly At Winchelsea New Hall

Mondays 09.30-10.15	Pilates with Hannah	Suitable for all. Contact Hannah on 07936 151529 or email hannahpilateshastings@gmail.com
Mondays 15.00-15.50	Zumba Gold With Daisy	Suitable for all. Contact Daisy at fitnessbythesea@outlook.com
Tuesdays 14.00-15.30	Tune In Winchelsea	Fun singing group run by local tenor Gary Marriot. All ages and abilities welcome. Contact Rosemarie on 07941 458628
Thursdays 09.30-10.30	Scottish Dancing	A fun, friendly class, suitable for beginners. Contact maddycoelho@hotmail.com
Thursdays 10.45-11.45	Pilates with Celia	Suitable for all ages and abilities. Contact Celia on kinqcelia54@gmail.com
Fridays 09.30-10.15	Pilates with Hannah	All welcome. Contact Hannah on 07936 151529 or email hannahpilateshastings@gmail.com
Fridays 10.45-11.45	Move It or Lose It with L Rae	Fun and friendly exercise class suitable for all abilities. Contact Lisa on 07939 323937 or email lisarae.brough@moveitorloseit.co.uk

NB: Some classes close during July/August

**The hall has Table Tennis, Badminton and Pickleball equipment and can be booked on an ad hoc basis for £2 per person per hour (£1 for under 16's) – contact Rosemarie on 07941 458628 or via WhatsApp



Rye Food Bank

Cam writes: I will be making the July Food Bank doorstep collection on behalf of the Rye and Winchelsea Rotary Club on Tuesday 21st between 10 am and 1 pm.

For the last six years I have collected on the 3rd or 4th Tuesday of each month and delivered these donations the following day to the Food Bank in Rye, for distribution to needy local families.

I am always looking for new donors and would be grateful if within the town you would tell your neighbours

My telephone number is 01797 226414, which has an answerphone facility. Please help the Food Bank if you can.

*Donald Cameron Clarke
Old Malt House
Winchelsea*

For further details about Rye Food Bank and how to make a donation go to ryefoodbank.com

Winchelsea Church and Town Calendar
July 2026

- Saturday 4th Church Market - 10.30 till 12
Pétanque Challenge Finals - New Inn - 5.15pm
Winchelsea Arts Concert - St Thomas's - 7.30pm
WBCA Quiz Night - Community Hall - 7pm for 7.30
- Sunday 5th** **8.30am: Holy Communion (BCP) at Pett Level**
Patronal Festival **11am: Festal Eucharist at Winchelsea**
4pm: Choral Evensong at Winchelsea
- Tuesday 7th Mothers' Prayers - 10am
- Wednesday 8th Second Wednesday Society - New Hall - 2.30pm
- Sunday 12th** **9.15am: Parish Eucharist at Icklesham**
10.30am: Sea Sunday Service at Pett Level
11am: Parish Eucharist at Winchelsea
- Saturday 18th Winchelsea Gardens open for NGS - 11am to 5pm
Film Night - New Hall - 6.30 for 7.30pm
- Sunday 19th** **11am: Benefice Eucharist at Pett with Bishop Will**
No service at St Thomas's today
2.30pm: Methodist Anniversary Service
Winchelsea Gardens open for Memorial Hospital Rye - 2pm to 5pm
- Wednesday 22nd Rude Mechanical Theatre Company - School Field - 7.30pm
- Saturday 25th Wine Society informal gathering at Charles Palmer Vineyard - 3.30pm
- Sunday 26th** **9.15am: Parish Eucharist at Icklesham**
11am: Parish Eucharist at Winchelsea
- Friday 31st Fellowship Lunch - WB Community Hall - 12.30 for 1pm
- Sat 1st Aug Church Market - 10.30 till 12
- Sun 2nd Aug** **8.30am: Holy Communion (BCP) at Pett Level**
11am: Parish Eucharist at Winchelsea

Further ahead

- Sat 15th Aug Winchelsea Summer Fete
Sat 29th August Garden Society Summer Show
29th to 31st Aug Millennium Artefacts Art Exhibition

Please send copy for the August Magazine
to ryeview@gmail.com
as soon as you have it to hand but, in any case
before Tuesday 28th July

500 year-old
Chestnut tree at
Mountfield
photographed by
Birdie Johnson

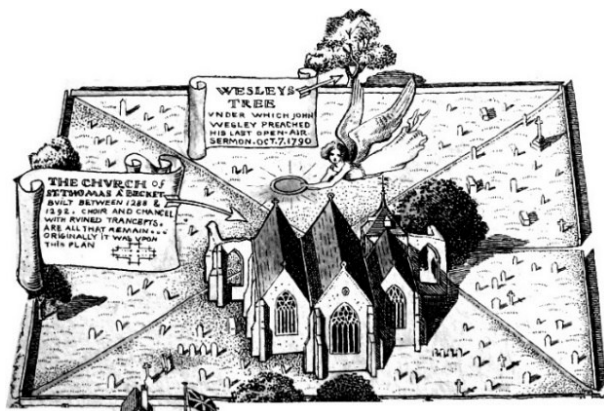


For Winchelsea Beach information go to
winchelseabeach.org.uk

For Winchelsea information go to
winchelsea.com

For more information about the Church go to
winchelsea-icklesham-churches.org.uk

For weekly news from the local area go to
ryenews.org.uk



Benefice of Winchelsea Icklesham and Pett

Rector

The Revd Nathanael Hayler
The Rectory, St Thomas Street, Winchelsea TN36 4EB
01797 308531 rector.wip@gmail.com
WhatsApp/SMS 07941 602349
The Rector's day off is Friday

Winchelsea Churchwardens

Celia King
Stargazer, Morlais Place TN36 4LG
01797 227858 kingcelia54@gmail.com
Gavin McFadyean
7 Barrack Square TN36 4EG
07867 748511 gavin@mcfadyean.co.uk

Winchelsea PCC Secretary

Mary Parker
07927 107678 parkermary848@gmail.com

St Thomas' Primary School

Headteacher Dale Saxby
Friars Road TN36 4ED 01797 226479
office@st-thomas-winchelsea.e-sussex.sch.uk

Parish Magazine

Editor David Page
4 Kent Close TN36 4EX
01797 226524 ryeview@gmail.com