

WINCHELSEA PARISH MAGAZINE

September 2025



Garden Society Summer Show



Mayor's Update

Peter Cosstick writes, This will be a very brief update, as I am sure this month's magazine will contain many articles. Over the past couple of months Winchelsea Corporation continue to make great progress, with many of our projects being delivered.

The long awaited Court Hall Doors and stonework restoration looks great and no doubt will last for many years to come. The Anne Gun, has now been placed and secured on the newly built gun carriage. This has become a showpiece in the museum garden and is now enjoyed by visitors and residents.

Moving the gun to its final resting place was incredibly well planned. My personal thanks go out to Jo Turner, Chris Chappell, David Merrifield, Jerry Moss, James Tomlinson and Paul Ramsey, all of whom were instrumental in making this happen in a variety of ways. I would also like to thank Andy Polley of Rye Hire who provided the equipment required to move the cannon free of charge.

We are very grateful to FOAM and all those individuals and organisations who have provided considerable financial support and donations which helps us achieve our various projects.

Hopefully, by the time you read this article you will see a wonderful new planting trough by the west gable Court Hall wall. This has been kindly donated by Winchelsea residents, and more information will follow in my October update.

Needless to say, behind the scenes, members of Winchelsea Corporation are still working very hard on a number of other projects, so again I will keep you posted next month.



Current Corporation fundraising dates for your diary are

Saturday 13th September
Celebrating 700 Years 1288 - 1988

Sunday 21st September
Charity Pub Quiz 7pm New Inn
(Full details to be announced)

Friday 24th, Saturday 25th & Sunday 26th October
Tales from the Court Hall
(Full details to be announced)

All my best wishes, and thank you for all your support.

Peter



Royal visit July 1988

Winchelsea 700 Film

On Saturday 13th September there will be an opportunity to take a trip down memory lane and view some very nostalgic and rare film footage of some of the celebrations that took place in our town during 1988 to mark 700 years of Winchelsea

The film will be shown in the Court Hall at 2.15pm and lasts around 30 minutes.

Following a short break there will be a further opportunity to see the David Starkey's 'The Cinque Ports'. This will be shown at 3pm and lasts around 17 minutes.

Due to limited seating capacity booking is essential. Please contact Peter Cosstick at winchelsea.tc@btinternet.com as soon as possible. It would be very helpful if you could indicate if you intend to stay for both films.

Entrance is free but cash donations are very welcome so help support our charity, Winchelsea Corporation.



Collecting the King's Dues

Town Chamberlain, Neil Clephane-Cameron will be carrying out his time-honoured annual duty of collecting the King's Dues this month, starting on Saturday 6th.

When Queen Elizabeth I visited Winchelsea in the late sixteenth century she was reportedly horrified by the state of the town. By then it was in serious decline due to the silting up of the harbour and the loss of its function as a port.

Accordingly, the Queen passed to the Corporation the town gates, along with the revenue from their use, as well as the right to charge ground rent on certain land and properties in the town, known now as the King's Dues. Today these are collected on a totally voluntary basis and the Corporation benefits by about £30 per annum.



An Afternoon at the Opera

St Thomas' Church
Winchelsea TN36 4EB

**Sunday 7th September
at 4pm**

Tickets online at winchelsea-arts.org.uk
and at the door

£25 (free for under 18s)

Ava Dodd soprano
Dawid Kimberg baritone
**Ashley Fripp and
Mark Nixon** piano

**Winchelsea
Arts**



[Click here to see the programme for this concert](#)

Book tickets at winchelsea-arts.org.uk

[Click here to see the full Season programme](#)



Jubilee Field

Icklesham Parish Council

Winchelsea Beach and Winchelsea Toilets

As many of you will be aware, whilst Rother marketed our toilets knowing that IPC wanted ownership, and were proposing a mobile sauna in Winchelsea Beach, we have continued to fight this decision and have been successful. For months we have been working closely with Sedlescombe Parish Council whose toilets were going to be a nail bar so they share our success.

We called in Rother's decision to the Overview and Scrutiny Committee chaired by our District Councillor Paul Osborne and they agreed with us and sent the matter back to Rother's Full Council on 14th July. At that meeting even District Councillors from other areas spoke passionately for Icklesham and Sedlescombe Parish Councils' right to take ownership of these toilets on behalf of residents.

The Monitoring Officer ruled that the matter could not be dealt with by full council and that it had to go back to the original cabinet that voted for this. A public vote was proposed and, whilst all the cabinet members abstained and

were clearly upset their decision had been called into question, every other Councillor voted in favour of our toilets being removed from the list of those to be leased off when the next cabinet meeting sat.

That Cabinet meeting was held on 21st July and members were informed that the sauna company have pulled their offer on the public conveniences.

Cabinet members also confirmed that they would not consider any further commercial offers for the public conveniences. Good news, as this means that both public conveniences are now within scope of Rother's new Protecting Local Services (Service/Asset Devolution Framework). This framework states that assets will be transferred on a freehold basis and that the starting point of negotiations would be with Parish Councils.

So, we got there in the end as this is what we had been asking for all along. So at the IPC meeting held that evening, IPC agreed to submit an Expression of Interest (Rother's new system) for the freehold of both Winchelsea Beach and Winchelsea toilets, together with the freehold for the toilets and car park that we already run in Rye Harbour. Hopefully Rother will not drag their feet on this bearing in mind the years it has taken for them to reach this decision. Watch this space.

Fence Installation - Jubilee Field

At the budget meeting held in October, the Parish Council agreed to use taxpayers' money to install a fence enclosing the playground area in Jubilee Field, Winchelsea following reports of uncontrolled dogs in the playground.

Although there is a clear sign at this playground informing dog owners that no dogs are allowed, some owners have chosen to ignore this thus raising health and safety concerns for our children whose playground this belongs to. So now it has been fenced may we remind everyone that no dogs are allowed in the play area.

Community Awards

The Parish Council handed out Community Awards to those who go above and beyond for the community at our Annual Parish Meeting held in May. Unfortunately, our wonderful

local PSCO Demetrius Georghiou could not attend and so we invited him to our Full Council meeting on 21st July where his award was presented by Chair Cllr Mrs Jacqui Stanford.

She thanked him for his incredibly helpful service to the Parish Council over the years, dealing with some very difficult situations. He has always been amazingly responsive, nipping many matters in the bud and avoiding escalation. PSCO Georghiou said that if residents had any problems that he could help with to contact the Parish Clerk who can forward any concerns for him to deal with.



Upcoming Meetings

Monday 8th September 6.15pm
Planning Meeting followed by Full Council
at Winchelsea Beach Community Hall

Monday 22nd September 6.15pm
Planning Meeting followed by Open Spaces Committee
at Winchelsea Court Hall.

Please remember IPC are here to represent you and welcome your views on any matter. Please send your views and requests to clerk@icklesham-pc.gov.uk or write to
PO Box 148 Winchelsea TN31 9FP 07714 169901



WMAS Art Exhibition

This year's art exhibition began with the preview on the Friday of the bank holiday weekend, with patrons, artists and guests arriving through the garden of the Court Hall. It was a glorious balmy evening which enabled guests to mingle more freely in and out of the two rooms of the Court Hall. It also enabled guests to admire the recently installed gun carriage which sits proudly at the Court Hall's garden door entrance.

The results this year exceeded our hopes of increasing our substantial results of last year, with almost 50% of the 125 exhibits being sold. This included finely crafted jewellery, pottery, wall hangings, and an intriguing piece of ceramics of

a violin which was soon scooped up by a delighted Winchelsea resident.

St. Thomas' School children aged between 5 and 11 once again provided an extremely well-executed and eclectic mix of art work, much to the surprise of the proud parents who do not know until the last day of term if their child has been chosen to exhibit. Let us hope they will continue to enjoy painting like our longest standing exhibitor who is now over 90, and is still producing her unique style of conversational pieces. All four were snapped up the minute the exhibition opened.

The chairman and the committee would like to thank our 40 artists for their wonderful varied work in all mediums, our patrons and guests for their support, and the very generous donors of the raffle prizes which increased to 14, topping last year's raffle sales at over £700.

We can be happy in the knowledge that the Millenium Artefacts Society can fulfil our brief to continue with the maintenance of the town's Artefacts.

Geraldine l'Anson





Little Shop Update

Great Progress but some Concerns

When you buy your pint of milk or newspaper it may appear that not much has changed at the Little Shop. However our team continues to make great progress as we transition to a community business and safeguard the long-term future of the shop. For example, we recently passed a significant milestone, when we finally became registered with the Financial Conduct Authority, and we are now officially a Community Benefit Society and a Limited Company.

That in turn means that we have been able to open our own bank account, which can be used for our administration costs during this transitional period and to hold monies raised to support the shop, for example the money from the raffle at the ABBA event.

Our growing team of volunteers, (there are now more than 30) have now been working in the shop on Sundays for four months, so recently we had a little garden party (above) as a thank you. Our volunteers were joined by the Steering Group, Nathan, and Stephen Rumsey, so it was a good

opportunity to share stories and swap ideas while enjoying Pimm's and canapés. A big thanks to Jo Turner who hosted the event in her lovely garden and thankfully it was a glorious sunny evening.

Working with the shop and analysing its sales has given us a very clear view of how the shop is operating, which has been invaluable when developing our business plan.

One thing that has become apparent is the impact on the business from the various road closures that have taken place recently. Whenever through traffic is stopped during opening hours, sales plummet by as much as a third over the day. Clearly any long-term closure, or near closure, of Strand Hill, would likely make the shop unsustainable.

Both Nathan and Stephen have held this view for some time. However, now that we can see the evidence ourselves, it is indisputable. We have all been surprised at how much the shop depends on those from outside the town for its business. We estimate it's as much as half of all sales, so anything that impacts their ability to access the shop is of great concern.

As residents ourselves we remain very much in favour of reducing the speed of traffic driving through the town, to stop rat-running and improve safety. However, the Little Shop Steering Group has now formally written to the Residents' Association, urging them to consider the Little Shop when exploring possible solutions, in the belief that it should be possible to have both a thriving community shop and effective traffic calming measures.

If you have any questions about our plans, or can help in any capacity, please contact us on shopgroup@winchelsea.com. And please don't forget that our shop doesn't just need helpers, it needs customers, so please try to use the shop as much as you can. That way we can all ensure its future.

*The Little Shop Steering Group: Ali Casey, Glen Marks,
Dave Richards, Rosemarie Roberts, Ian Rowlands*

.

FISH & CHIP SUPPER



IN AID OF



RNLI RYE HARBOUR

SATURDAY 13TH SEPTEMBER 7PM

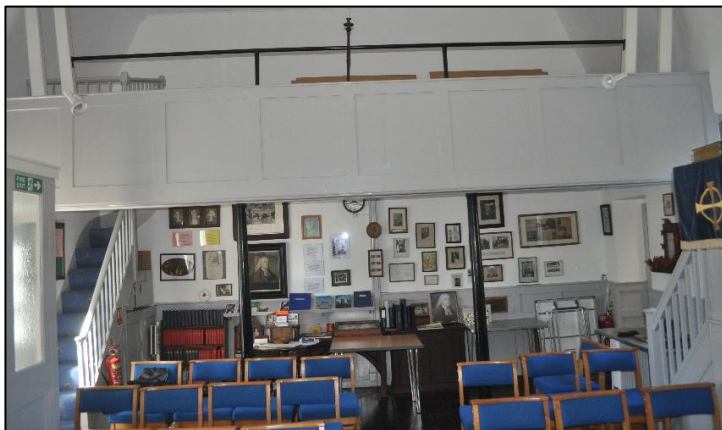
NEW INN • WINCHELSEA



MEAL
OI OI BINGO
SHANTIES

Tickets on Sale at New Inn & RNLI Shop

ROYAL NATIONAL LIFEBOAT INSTITUTION (RNLI), A CHARITY REGISTERED IN ENGLAND AND WALES (209603), SCOTLAND (SC037736), THE REPUBLIC OF IRELAND (20003326) AND THE BAILIWICK OF JERSEY (14)



John Wesley's Chapel

Thanks to those of you who came to the coffee morning on Saturday 16th August. Our next event is on 13th September, when the Chapel will host its Heritage Open Day from 10am to 5pm. This coincides with the Sussex Historic Churches Trust Ride and Stride event but also provides the opportunity for a visit to see the Chapel's historic artefacts and documents accumulated over the years and learn more of the Chapel story in the context of the town.

During the day there will also be a concert of local performers presented by Ken Hatch and our musical director, Stephen Page, with a strong emphasis on musical items it seems, but it will include other items too. See heritageopendays.org.uk and search on 'Winchelsea' for more details.

Then there will be a historic Harvest Thanksgiving celebration on Saturday 11th October meeting at around 10.30am for tea and coffee before the service at 11. Anecdotes and personal memories of harvest practices from the past will be included, together with hymns and songs we may not have sung before.

After that, on 1st November we shall have an All Saints Day celebration. This will be a first for the Chapel since Methodists are not big on historic saints, so it should be very interesting. As ever, all are very welcome at any of the Chapel events. *Mike Lambourne*



Literary Society

Winchelsea Literary Society is hosting a talk by Tomiwa Owolade titled, *James Baldwin: What it means to be an American* on Friday 19th September at 7 for 7.30pm in the Lower Court Hall.

Tomiwa Owolade is an assistant comment editor at the Daily Telegraph. He has also written for many British publications, including The Times and The Observer and he is the author of the book *This is Not America* which was published in 2023. Tomiwa grew up in Nigeria and his book describes the Black British experience in Britain today.

This event is free for members
and non-members pay £5 admission.

literarysoc.winchelsea.secretary@gmail.com



Cathy Owens



St Thomas Church will be participating in “Ride & Stride” again on Saturday 13th September to raise funds for Sussex Historic Churches Trust. In the morning, there will be both a sponsored walk and cycle ride.

Walkers will leave St Thomas at 10.30am for Icklesham Church via the Beacon and along the Brede valley returning via Wickham Rock Lane and Wickham Manor Farm to Winchelsea or, for those who prefer, by bus. Jeremy Naylor will be leading a circular sponsored cycle ride starting from St Thomas’s and taking in the Wesleyan Chapel and the churches at Icklesham, Pett and Pett Level.

If you would like to join the walk, there are sponsorship forms at the back of the Church or email David Harris, St Thomas’s Treasurer for a form and further information. [*harrismanuell@outlook.com*](mailto:harrismanuell@outlook.com).

In the afternoon from 2.30pm, tea and cakes will be available in the church with entertainment provided by Jonathan Murphy on the piano. Donations will be welcome. Throughout the day, St Thomas’s will also be welcoming visitors from other Sussex churches who are participating in Ride & Stride. In addition to sponsored walkers and cyclists, volunteers are needed to record visitors from other churches and to bake and serve cakes.

If you can bake a cake or are able to serve teas during the afternoon, please contact Mary Parker. [*parkermary848@gmail.com*](mailto:parkermary848@gmail.com).

Funds raised by the sponsored walkers and cyclists and from donations in the afternoon will be shared equally between the Sussex Historic Churches Trust and St Thomas’s Church.



WINCHELSEA FILM NIGHT

In Conjunction with Winchelsea New Hall

WALK the LINE



Director

James Mangold

Writers

Johnny Cash, Gill Dennis, James Mangold.

Stars

Joaquin Phoenix, Reese Witherspoon, Ginnifer Goodwin.

A chronicle of country music legend Johnny Cash's life, from his early days on an Arkansas cotton farm to his rise to fame with Sun Records in Memphis, where he recorded alongside Elvis Presley, Jerry Lee Lewis, and Carl Perkins.

SATURDAY 20th SEPTEMBER 6.30 for 7.30 SCREENING
Admission Free
Refreshments, Pay Bar.
Come early, enjoy a drink or two.



Summer Show

As always, the Garden Society Summer Show attracted plenty of entries and plenty of visitors. The event was held in the New Hall on August Bank Holiday Saturday.

The cups were won by Howard Norton, Sally Rhodda, Jennifer Sutherland, Simon Snell, Cynthia Martin and John Dunk. Voted the most popular floral exhibit was an arrangement by Cynthia Martin.

The RHS offers an award for local societies to give to a member who has made a special contribution and this year it went to Godfrey Martin for his work restoring the donated tools the Society sells at shows and the Summer Fete.

Congratulations to chairman, Sally Rhodda, the committee and all who came together to create such a happy event and splendid display.





ST THOMAS'S CHURCH, WINCHELSEA

HARVEST FESTIVAL BARN DANCE

SATURDAY 27TH SEPTEMBER

In the New Hall
Doors Open 18:30 PM

Live Music & Dancing

with **The Catsfield Steamers**

BYO Food & Drinks | All Welcome

£10 per Ticket

Available from The Little Shop and Suttons.

All proceeds going to Rye Food Bank.





Fellowship Lunch

Fellowship Lunch will be on Friday 26th September at 12.30 for 1pm in Winchelsea Beach Village Hall. Please contact Mary on 07927 107678 to book a place and bring cash for your charitable donation.

Mary Parker 07927 107678.

Mothers' Prayers

Mothers' Prayers will be on Tuesday 2nd September at 10am at *Dabchick Cottage*, Morlais Place

First Wednesday Coffee Morning

on 3rd September in Winchelsea Beach Community Hall at 10.30 to 12. All are welcome. Tea, coffee and homemade cakes available and good company.



“Sit down, be quiet and listen...”

David Dickson talks to Second Wednesday Society about children’s behaviour in schools.

David worked in diverse inner-city schools for 40 years. Passionate about social justice and improving the life chances of every child through access to high quality education and health care, David talks about Eastbury Community School in Barking where he was Executive Headteacher.

10th September at 2.30pm in the New Hall
Doors open from 2.15pm

Annual membership £15 - Visitors £5 - Homemade tea £2

2ndWeds@gmail.com

WINCHELSEA BEACH COMMUNITY ASSOCIATION

REGISTERED CHARITY NUMBER: 278165



**AUTUMN DANCE &
FISH & CHIP SUPPER**
WITH LIVE MUSIC FROM
SOMETHING ELSE



SATURDAY 4th OCTOBER
from 7:30 pm
at Winchelsea Beach
Community Hall, Sea Road



£18 to include fish & chips or £10 without fish & chips

BRING YOUR OWN DRINKS!

TICKETS FROM:

SUTTONS FISH SHOP, SEA ROAD
or CONTACT MARY on 07927 107 678
parkermary848@gmail.com



**WINCHELSEA BEACH
COMMUNITY
ASSOCIATION**



Winchelsea Cricket

It seems incredible in this hot dry summer that two of Winchelsea's matches have fallen foul of rain! However, when they have got on the field, it has been a good season for the club with, at the time of writing, only one defeat.

Undoubted highlight of the August results was a 100-run win away to Ashburnham when a good all-round batting display was followed by Mike Stoneham taking centre stage when the team took to the field. Mike was fitting in cricket between performances in *Educating Rita* at the Barn Theatre at Smallhythe and the Stables Theatre, Hastings. And he made the most of it, taking 5 wickets for 27 runs in 8 overs. He twice took two wickets in two balls and was unlucky to miss a hat trick when the second "hat trick ball" saw a difficult chance put down.

New Romney are due to be the visitors on the final Sunday in August with four more fixtures to come in September. Clive Vale and Battle are visitors for the first two weekend in September and then the team go on the road with away games at Mersham le Hatch and Mountfield.

John Josiah



Winchelsea New Hall

100 Club

The winning number for the 100 Club for August, drawn at the Garden Society Summer Show by Sally Rhodda, was 23. Congratulations to the winner of the £100 prize.

New Hall AGM

It's that time of year again, so please hold the date of Saturday 4th October at 12noon for the New Hall AGM to hear about how we have done over the last 12 months and plans for 2026 (our centenary year).

What's On Weekly At Winchelsea New Hall

Mondays 09.30-10.15	Pilates with Hannah	Suitable for all. Contact Hannah on 07936 151529 or email hannahpilateshastings@gmail.com
Mondays 15.00-15.50	Zumba Gold	Suitable for all. Contact Daisy at fitnessbythesea@outlook.com
Mondays 16.00-17.00	Pilates with Celia	Suitable for all ages and abilities. Contact Celia on kingcelia54@gmail.com
Tuesdays 14.00-15.30	Tune In Winchelsea	Fun singing group run by local tenor Gary Marriot. All ages and abilities welcome. Contact Rosemarie on 07941 458628
Tuesdays 18.00-20.00	Rother Fitness	Contact Rachel at rotherfitnessgroup@outlook.com
Wednesdays 18.00-19.00	Rother Fitness	Contact Rachel at rotherfitnessgroup@outlook.com
Thursdays 09.30-10.30	Scottish Dancing	A fun, friendly class, suitable for beginners. Contact maddycoelho@hotmail.com
Thursdays 18.00-19.00	Rother Fitness	Contact Rachel rotherfitnessgroup@outlook.com
Fridays 09.30-10.15	Pilates with Hannah	All welcome. Contact Hannah on 07936 151529 or email hannahpilateshastings@gmail.com

**The hall has Table Tennis, Badminton and Pickleball equipment and can be booked on an ad hoc basis for £2 per person per hour (£1 for under 16's) – contact Rosemarie on 07941 458628 or WhatsApp

The Turn of the Screw

by
Henry James

Thursday 13th November

Friday 14th November

Saturday 15th November

7pm

5pm and 7:30pm

3pm and 7pm

The Court Hall, High Street, Winchelsea

Following sell out performances of *Ghost Stories* and *The Fall of the House Usher*, FOAM move to the historic Court Hall for what promises to be an intimate and highly atmospheric production. Tickets go on sale 1st September.



Hamlet in Winchelsea

A Winchelsea production of Shakespeare's play is being planned for 21st to 25th April 2026, to be produced, directed and designed by Nigel Ashton and Phil Mack. The venue is still to be confirmed.

The searing tragedy of young student Hamlet, tormented by his father's death confronts each of us with the mirror of our own mortality in an imperfect world

We are looking for a group of local actors to complete the cast: there are a small number of major roles available. We are also looking for actors to play soldiers and members of the court, these are silent roles. Rehearsals for non-speaking roles will be minimal but you will get the chance to wear costumes from the Royal Shakespeare Company and be part of an exciting new venture.

If you are interested in being part of the production please email or message Nigel Ashton nashton364@gmail.com
07786 266260

In the town where Ellen Terry, the most acclaimed actress of the 19th century, rehearsed *Lady Macbeth* and where John Everett Millais, who painted the most famous of all Shakespeare paintings (above), produced some of his most famous works, Lines End Theatre presents, in the week of Shakespeare's 410th anniversary, perhaps the greatest play ever written.

The cast will be led by professional actors: Carl Batchelor as Hamlet, Charlotte England as Ophelia and Sam Woodhams as Horatio.

This specially commissioned version of the text reduces the play to its essence and runs about two hours. The most obscure classical and Jacobean references have been removed making it fully accessible to a contemporary audience. This promises to be an extraordinary production.

Nigel Ashton, Phil Mack



Ellen Terry as Lady Macbeth



Rye Arts Festival Concert at St Thomas's

Anne Rebecca Højlund & Francis Rayner bring *An Evening of Voice & Piano* to St Thomas's Church on Sunday 21st September at 7.30pm.

Anne Rebecca is a Rye-based classical singer. She grew up in Denmark, studied singing at Trinity Laban Conservatoire of Music in Greenwich and has performed around the South East and abroad. She has worked as a soloist with specialist baroque ensembles in Denmark and extensively with Barefoot Opera.

Anne Rebecca and duo-partner pianist Francis strive to deliver beautiful, unique and accessible recitals for voice and piano. Her repertoire will include two English songs with texts attributed to John Fletcher, one time resident of Rye.

Tickets cost £20. For more information and to book, go to box-office.ryeartsfestival.org.uk



Mayor puts Rector in Gaol

Researching W M Homan's unpublished, *Chronique Scandaleuse of Winchelsea* at East Sussex Records Office, Jerry Moss came across this:

“There is a letter preserved from John Frower to his master Milles Coverdale (the translator of the Bible). It is dated Winchelsea, 28th February 1536. It reads:

On 23rd instant received two letters for the Mayors of Winchelsea and Rye. The Mayor of Winchelsea immediately had the parson there to prison, where he will remain until my master's pleasure is known. He is a very unthrifty priest and a great reveller as all the County reports.

... The people of Rye were daily likely to make insurrections and they said it would never be well until one party had put down the other. Now the parson is in prison and they are almost at a stay and dare not speak. As to his master's fish the weather has been so bad that the boats could not put to sea.'

“Regarding the fish referred to, one wonders if this was the ‘shares’ a percentage of the catch that had been paid to the king until 1401, when it was granted to the Rector of St Thomas' Church Winchelsea.”

Winchelsea Summer Fete





Seen together above, the winners of the Fun Dog Show were Tulip, a Bernese Mountain Dog and, best reserve, Lottie, a Hungarian Visla



Christmas Windows 2026

Debbie Cosstick writes Needless to say, that very 'special' day is rapidly approaching. With this in mind, Winchelsea Christmas Windows will be launched at the Church Market on Saturday 4th October, and the team hope to see you there, to 'sign up' for a themed window display.

The team delivering the project is once again Richard Plumb, Lyn Davidson, Julian Cloke, Graham Large and myself.

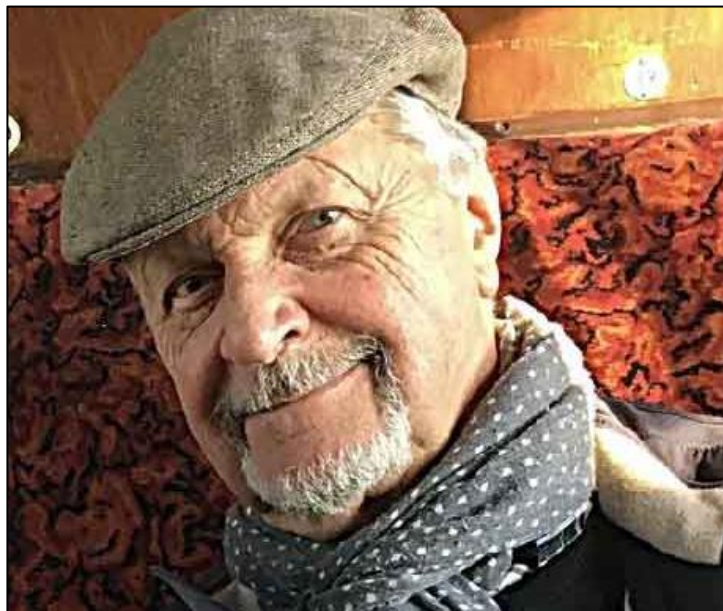
All proceeds from this event will be in aid of Demelza Children's Charity East Sussex. A full article will appear in the October Magazine.

THE EMBRACE

uncondit-
ional
love
and
irreduc-
ible
truth
meet
in
the
ultim-
ate
emb-
race
of
the
cross;

the cross where all love ends, or begins; redemption
freely granted for yet uncommitted sins; we see your

trans-
figured
face,
emblem
of
eternal
grace;
your
open
arms
around
the
world
in
uncondit-
ional
embrace.



Robert Holland

Robert died on 10th August after a sudden illness. He was 82 and had lived in Winchelsea for 23 years. In that time he took a leading part in town life. He served as chairman of the New Hall Committee and of Garden Society and was president of Rye and Winchelsea Rotary Club.

Robert was also a member of the Corporation and a cellar tour guide. With Sheila he created the beautifully designed garden at *South Mariteau* which they opened for many years to raise money for St Michael's Hospice and the National Garden Scheme.

He sang tenor with the Hastings Philharmonic Choir, the Occasional Singers and Winchelsea Singers and was renowned for his characterful and often hilarious performances in Winchelsea Singers' productions.

Robert's funeral took place at St Thomas's on 29th August and the church was full of friends and neighbours joining to remember him and to support his daughter Sally and the wider family.



Rye Food Bank

Cam writes: I am writing to advise you that the next Winchelsea doorstep Food Bank collection on behalf of Rye and Winchelsea Rotary Club, will be on Tuesday 19th August 16th September between 10am and 1pm. I have been the town collector for the last 5 years, commencing just before COVID struck, collecting on the third Tuesday of every month. These donations I deliver personally to the Food Bank the following day for distribution to local needy families.

I am always looking for new donors and would be grateful if you would spread the word in the town and tell your neighbours. My telephone number is 01797 226414.

Over recent months, I noticed that the Food Bank container at the back of the Church was producing fewer and fewer donations. However, I was delighted last week when checking to find a lovely small collection of groceries and goodies in the crate. it gave me hope and raised my spirits no end - thank you !

Please help the Foodbank if you can - the average number of local households receiving support during the period 1st January to 30th June was 38 weekly.

Many thanks for your enduring support.
Kind regards, *Cam Clarke, Old Malt House, Winchelsea.*

For further details about Rye Food Bank and how to make a donation go to ryefoodbank.com



The Fisherman *Rachel Bigsby*

Rye Harbour Nature Reserve in September

Saturday 6th (7pm – 8pm)

Evening with Violinist & Sound Artist Ruby Colley

Ruby will create soundscapes, weaving sounds of nature with violin, cello and electronics in Rye Harbour Discovery Centre's unique setting.

Friday 12th (11am – 12.30pm)

The Art of Seabird Photography by Rachel Bigsby, award-winning Wildlife Photographer

Sussex-based wildlife photographer, Rachel Bigsby, gives a talk on her creative and philosophical approach to capturing natural artistry, followed by a Q & A session.

Wednesday 17th (9.45am – 11.30am)

Weekly Wellbeing Walk

Enjoy the outdoors with a morning of gentle walking across Rye Harbour Nature Reserve with our walk leader volunteers, every Wednesday morning. Anyone can join in and there's no need to book.

Friday 19th (6.30pm – 8.30pm)

Bat Walk at Dusk

Join us the sun begins to set on a guided walk to look for bats with our expert, as these fascinating creatures emerge to hunt at night.

Sunday 21st (10am – 3pm) -**Guide in a Hide**

Drop in to the Gooders bird hide, just off the path between the car park and the sea. Friendly guides will be on hand through the day to show you the birds.

Sunday 21st (11am – 12pm) -**Talk: Etta Lemon, The Woman Who Saved the Birds by Social Historian, by Tessa Boase**

When Hastings-based Social Historian Tessa Boase told the RSPB she wanted to write their early story, they refused to let her visit their archives. To a former investigative journalist, this was an irresistible challenge.

Thursday 25th (10am – 1pm)**Walk with a Ranger at Rye Harbour -
Waders and Wildfowl**

Famous for its birdlife, Ranger Matt will help you spot the special birds and amazing insects of Rye Harbour Nature Reserve in early autumn.

Saturday 27th (5.30pm – 8pm)**Pie and Mash Evening with a View**

Enjoy the perfect comfort food with friends or family while watching the sun set over an unbeatable view at the Discovery Centre.

Tuesday 30th (9.30am – 1pm)**An Introduction to Waders**

If you're new to birdwatching and are perplexed by Plovers or need help separating your Shanks, then this course is for you.

To find out more, or book a space, go to
sussexwildlifetrust.org.uk/whats-on

Winchelsea Church and Town Calendar

September 2025

Tuesday 2nd	Mothers' Prayers - <i>Dabchick Cottage</i> , Morlais Place- 10am
Thursday 4th	New Inn Bible Study - 6 to 7pm
Saturday 6th	Church Market at St Thomas's - 10.30 till 12 Collection of King's Dues
Sunday 7th	8.30am: Holy Communion (BCP) at Pett Level 11am: Parish Eucharist at Winchelsea Winchelsea Arts Concert - St Thomas's - 4pm
Wednesday 10th	Second Wednesday Society - New Hall - 2.30pm
Saturday 13th	Ride and Stride events - Church and Chapel 'Celebrating 700 years' films - Court Hall - 2.15pm Charity Supper - New Inn - 7pm
Sunday 14th	9.30am: Parish Eucharist at Icklesham 11am: Parish Eucharist at Winchelsea
Friday 19th	Literary Society - Court Hall - 7pm for 7.30
Saturday 20th	WAAHS Talk - New Hall - 11am Film Night - New Hall - 6.30pm for 7.30
Sunday 21st	11am: Parish Eucharist at Winchelsea Rye Arts Festival Concert - St Thomas's - 7.30pm
Friday 26th	Fellowship Lunch - WB Community Hall - 12.30 for 1pm
Saturday 27th	Harvest Festival Barn Dance - New Hall - 6.30
Sunday 28th	9.30am: Harvest Festival Eucharist at Icklesham 11am: Harvest Festival Eucharist at Winchelsea
Sat 4th Oct	Church Market at St Thomas's - 10.30 till 12 WAAHS Talk - New Hall - 10am New Hall AGM - New Hall - 12 noon Autumn Dance - WB Community Hall - 7.30pm
Sun 5th Oct	8.30am: Holy Communion (BCP) at Pett Level 11am: Parish Eucharist at Winchelsea <i>with the Bishop of Chichester</i>

Please send copy for the October Magazine
to ryeview@gmail.com
as soon as you have it to hand but, in any case,
before Sunday 28th September

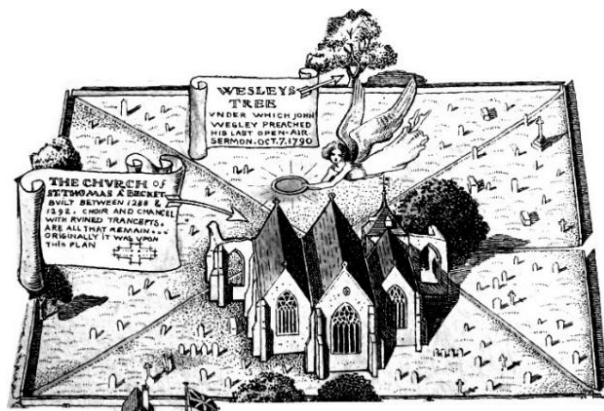


For Winchelsea Beach information go to
winchelseabeachcommunityassociation.co.uk

For Winchelsea information go to
winchelsea.com

For more information about the Church go to
winchelsea-icklesham-churches.org.uk

For weekly news from the local area go to
ryenews.org.uk



Parishes of Winchelsea Icklesham and Pett

While we await the appointment of a new rector, please contact the PCC Secretary, Mary Parker, with any enquiries about Baptisms, Weddings or Funerals. For all other matters, please contact the Churchwardens.

Churchwardens

Celia King

Stargazer, Morlais Place TN36 4LG
01797 227858 kingcelia54@gmail.com

John Rodley

The Stone House, Barrack Square TN36 4EG
01797 223458 johnrodley@btinternet.com

PCC Secretary

Mary Parker

07927 107678 parkermary848@gmail.com

St Thomas' Primary School

Headteacher Dale Saxby

Friars Road TN36 4ED 01797 226479
office@st-thomas-winchelsea.e-sussex.sch.uk

Parish Magazine

Editor David Page

4 Kent Close TN36 4EX
01797 226524 ryeview@gmail.com