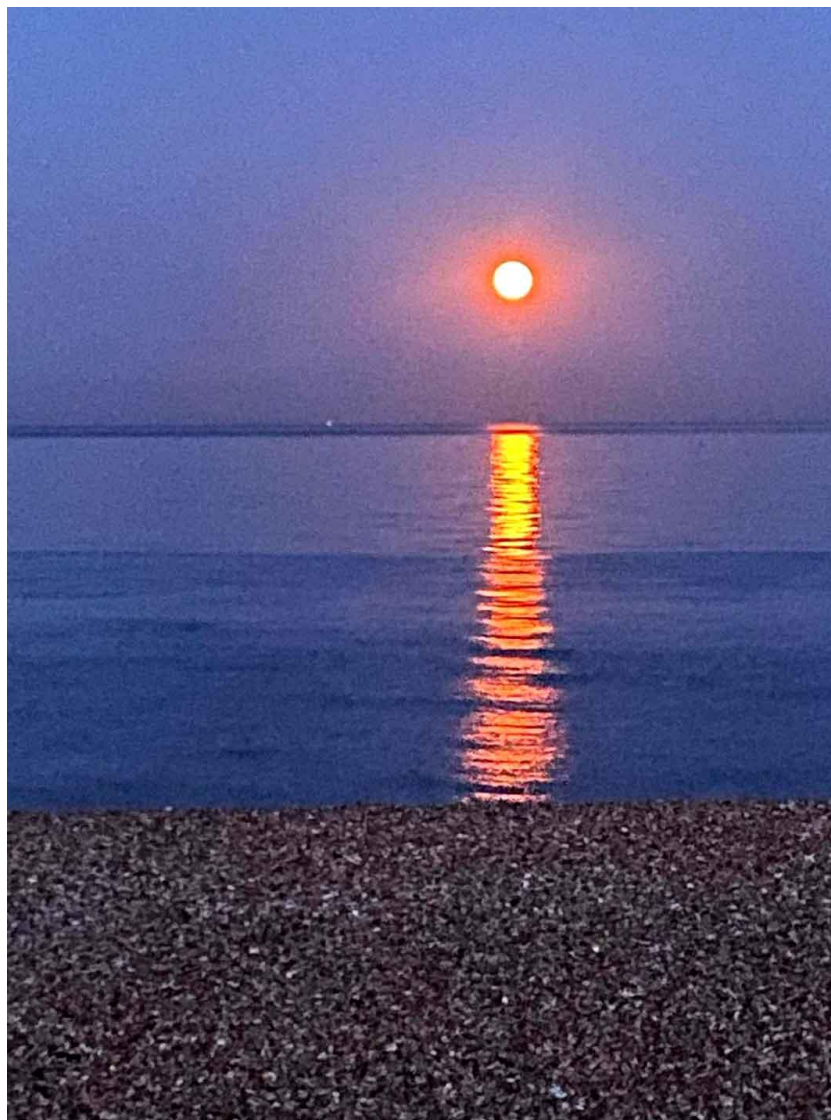


WINCHELSEA PARISH MAGAZINE

August 2025



Sue McGeown

The day we met the King

Peter Cosstick writes: During April, the Lord Warden, Admiral Sir George Zambellas contacted all fourteen members of the Cinque Ports Confederation in relation to a special event to be held at Walmer Castle on 10th July.

The Mayors, Consorts, Town Clerks and two representatives from local worthy causes would be invited to attend and be presented to a 'senior VIP'. Our nominated local worthy causes were Demelza East Sussex, and the Pett Level Independent Rescue Boat, which were accepted by the Lord Warden. After weeks of secrecy and planning the big day arrived. At 8am we were all ready to leave Winchelsea and travel to Walmer Castle.



Pictured above (left to right) Melissa Mungovan *Lead Nurse Demelza*, Jennifer Sutherland *Town Clerk*, Jo Barry *Operations Manager PLIRB*, myself, Debbie, and Steve Dine, *Empress Coaches*.

As it's not every day that you are invited to meet the King, Debbie and I agreed we would all travel in style. We personally paid for the luxury of a limousine which was thoroughly enjoyed by all. It took away the stress of driving

on such an important occasion and what proved to be one of the hottest days of the year.

On arrival, VIPs, members the Cinque Ports Confederation and representatives of their nominated worthwhile causes were greeted by the Lord Warden and allocated an area in the Queen Mother's Garden in readiness to meet HM King Charles.



The King's helicopter arrived just after 11am. Having rehearsed our bows, curtsies, and greetings, we were now ready to meet him.



Amazing, and very happy moments! King Charles recalls his visit to Winchelsea in 2021, including our church, John Spencer's cellar and Spike's grave. He was extremely interested in our local wine production. The King hopes to return to Winchelsea in the future.

Jennifer's quote. 'The invitation of the Lord Warden to meet with King Charles made for a memorable occasion. The King showed qualities of interest and appreciation of the role and work of his subjects. I particularly enjoyed his sense of humour asking if 'I keep the Mayor in order?' and my reply 'Well, I can but try...' He may not remember me, but I will remember curtsying to His Majesty'.



The King meets Melissa and Jo

Melissa's quote. 'Thank you so much to the Mayor and Mayoress of Winchelsea for the once-in-a-lifetime opportunity to attend the Lord Warden's reception and to meet King Charles. I was very proud to represent Demelza as their Lead Nurse; the Queens Institute of Community Nursing, as a Queen's Nurse; and for myself as a royalist.

'King Charles was charismatic and spent time speaking to all who attended, taking interest in our roles. What an absolute privilege and on such a beautiful day, in the most beautiful setting! Thank you, Winchelsea'

Jo's quote. 'I was very honoured to be nominated by Peter Cossstick, Mayor of Winchelsea. It was a very special day right from the start with a limousine to Walmer Castle.

It was also lovely to meet and share the day with my co-nominee Melissa. I felt very nervous when I found out the VIP was going to be the King, but my nerves disappeared when it became our turn to meet the King, who was amazing. We chatted about how many 'call outs' we've had this year and what they were. I was nominated for my voluntary work with Pett Level Independent Rescue Boat and have been involved with the association for over 40 years and am now the Lifeboat Operations Manager. A wonderful day'

In conclusion, it was a great honour and privilege to represent Winchelsea, and meeting HM King Charles, in such a wonderful location for this truly remarkable historic event. All of us agreed that we will cherish this memory for many years to come. Spending a few minutes to chat to the King was incredible. A charming, engaging, and very hard-working individual.

It was great to see all the representatives of the Cinque Ports Confederation gathered, VIPs and, more importantly, all those individuals and organisations receiving well deserved recognition for all the amazing work they do in supporting their local communities. We are sure that this occasion has helped to raise the profile of these wonderful people and who they represent.

Having met and spoken to everyone, the King went on to plant a tree, to be serenaded with a shanty song, and to meet volunteers of Walmer Castle. The King then departed and headed off to Deal to meet with many other local volunteers, and members of the general public.

Our grateful thanks to the Lord Warden, Admiral Sir George Zambellas, and his team for all their hard work to ensure this historical event was a huge success. We must not forget to thank Steve of Empress Coaches, for looking after us, and providing safe passage.

A day never to be forgotten.
Peter and Debbie Cosstick

Photographs by KT Bruce, and David Page

Benefice Profile

St Thomas the Martyr, Winchelsea
All Saints & St Nicolas, Icklesham
St Mary & St Peter, Pett
St Nicholas, Pett Level



Towards appointing a Rector

The Benefice Profile, drafted by Celia King and a small group of representatives from Icklesham, Pett and Winchelsea has been approved by the diocese. The document will be available for anyone interested in applying for the post of rector. You can access the document here:

cofechichester.contentfiles.net

The PCC are pleased that the Profile gives a really accurate picture of the three parishes; it was deemed excellent by the

Revd Matthew Foy, the Assistant Archdeacon of Hastings, who is supporting all three PCCs with the recruitment process. An advertisement has been placed in the *Church Times* and interviews are scheduled for Tuesday 2nd September. The PCCs of all three parishes are coming together for a joint PCC Meeting to elect the representatives who will join the interview panel.

The interview process will be a challenging time where we will be trying to balance out the needs of three different churches. Celia has spoken to Matthew Foy and also had in-depth conversations with Bishop Will from Lewes and Archdeacon Martin to let them know about our feelings and the type of person we would like. Please pray that our decisions will be the right one for the community. Also keep the 'back room team' in your prayers as we continue to keep our churches going during this time.

Corporation Fundraising Events

Some dates for your diary.
There will be more information in the September magazine.

Saturday 13th September
2pm. Court Hall - Winchelsea
Celebrating 700 years 1288-1988 (Rare film footage)

Sunday 21st September
7pm Charity Pub Quiz - New Inn

Friday to Sunday, 24th, 25th and 26th October
'Tales from the Court Hall' - Winchelsea Court Hall

Sunday 7th December
7pm. Christmas Charity Quiz Night - New Inn

Saturday 13th December
6.30pm. Presentation to Demelza - New Inn



The Town Fete is fast approaching, run this year by St Thomas' School PTA. We are still seeking volunteers to help on the day. Thank you!

We have lots of fun planned for the event, of course the Dog Show, the Grand Raffle and lots of artisan stalls and traditional fete games. We do still have some performance slots left so if you, or a friend would like a 15-15 minute slot to perform or sign, etc.

Additional event day programmes will be handed out. If you would like your company logo and details to appear on this you can sponsor a space for £35.00.

Please message Claire Cooper on 07868 368802 if you can assist with any of the above. Thanks, all!

The PTA would be grateful for donations of Tombola prizes. Here are some ideas - bottle of wine, champagne, soft drinks; chocolates or sweets; small gift items - candles, books, toys or stationery; gift vouchers for a local business or experience.

Please drop off any donations to 4 Hiham Green before 3rd August. Phone 01797 229406 if you need us to collect.

Luna's RECIPE

ST THOMAS' SCHOOL PTA

FUN DOG SHOW

SATURDAY 9TH AUGUST 2025

AT THE WINCHELSEA TOWN SUMMER FETE

THE NEW HALL / WINCHELSEA CRICKET CLUB
ON THE A259, TN36 4AA

2PM START ENTRIES FROM 1PM

CLASSES

1. Prettiest girl 2. Most handsome male
3. Cutest puppy 4. Golden oldie
5. Best rescue 6. Best biscuit catcher
7. Waggiest tail 8. Best in show - Judged by the Mayor

£2.00 per entry / 3 entries for £5.00

JUDGING BY ELLIE BOURN
OWNER & FOUNDER OF LUNA'S RECIPE DOG FOOD
www.elliespetservices.com



Five from FOAM

July has been a very busy month for FOAM, with four projects completed and work on a fifth beginning.

The first three projects all involve the Court Hall. We provided 50% of the costs to repair stonework by the Museum doorway, a further 50% of the costs involved in installing a French drain at the foot of the wall to the west of the building. FOAM has also contributed two thirds of the total funds required to repair the stone surrounding the Lower Court Hall doorway (above) and provide new oak planks for the door.

We were also able to help the Corporation by providing 50% of the cost of repainting the boards on the Town Well. These projects should all have been completed by the time you read this.

Our fifth project is the construction of a carriage to mount the museum's 16th century gun, from the warship 'Anne'. FOAM is providing the Museum with funds to cover the build, and it is hoped that the carriage will be on display in the garden by the end of August and in time to celebrate the Museum's seventy-fifth anniversary.

We couldn't do this, without the generous support of our membership and residents; thank you! An important way of raising funds each year is the FOAM bottle stall at the Fete. Providing a bottle or two of your wine is a great way to help us maintain the town's ancient monuments. Please drop them off at Wren Cottage or Lines End by 5th August.

This year's Fete is on Saturday 9th August. Do come over and say hello to the team on the FOAM stall. Who knows, you may even win back your wine or something even better!

The FOAM Committee

Chris Chappell, Mark Harris, Phil Mack, Glen Marks and Ian Rowlands.

Help us raise money to maintain the town's ancient buildings & gates



We need your booze!
Winchelsea Fete - August 9th

FOAM Bottle Stall



Please spare a bottle or two of your best plonk!

Please drop your bottles off at either Lines End or Wren Cottage (by August 5th)



Butterflies are back

Howard Norton writes: You must have noticed the big increase in butterfly numbers this summer after a run of lean years - and how welcome in our dark world. Whites have of course been abundant, but so have Red Admirals, Peacocks, Commas, Holly Blues, Gatekeepers and Meadow Browns. Small Tortoiseshells, Painted Ladies (pictured above), Small Skippers and Speckled Woods have been around in smaller numbers and, earlier in the year there were Orange Tips and Brimstones in good numbers.

Obviously, long spells of sunshine have been the main factor in this recovery, but rewilding in the Brede Valley has probably played its part, too. (We live on the Brede Valley side of the town).

As summer moves into autumn, look out for Small Coppers and Clouded Yellows from continental Europe, and rarities like Swallowtails which are increasingly seen in Sussex.

If you want to attract these lovely creatures to your garden, three plants are indispensable: buddleias, verberna bonariensis and Bowles' purple wallflower (which is particularly valuable as it flowers early).

Butterfly Conservation is holding its 'Big Butterfly Count' until 10th August. You can find out about taking part here: bigbutterflycount.butterfly-conservation.org

Cricket Season

Jim Kay writes: Fast bouncers, fine legs, perched by stumps, Bush Crickets are one of our noisiest insects, and yet so seldom seen. Unlike grasshoppers, crickets possess very long antennae, have larger, stockier bodies, occasionally eat other insects, tend to crawl about rather than jump, and are often active at night. The males produce sound by rubbing their wing-cases together, grasshoppers by rubbing their legs together - in both cases known as Stridulation (not unlike running your nail along the teeth of a comb). With sound being so important, Crickets have developed very complex ears, not dissimilar to ours in having an outer, middle, and inner ear. Where they do differ is having ears that begin in their front legs, and end in their thorax.



Speckled Bush-cricket and Roesel's Bush-cricket

Winchelsea has a good selection of Grasshoppers and Crickets, all with slightly different appearances and songs. If, like me, you find that you can no longer hear these insects through old age or a misspent youth at rock concerts, a bat detector will help make these high frequencies audible. Particularly common around Winchelsea are the Speckled Bush-cricket (makes a single soft 'click' sound at night, you might just make it out in your garden), and a relatively recent arrival to the UK, the Roesel's Bush-cricket (a song more like the fast unwinding of fishing line from a rod).

Dragonflies are now on the wing around the canals of the Brede Valley. There's still a chance to see the 'Green Eyed Monster' the Norfolk Hawker, extending its range beyond The Broads to the South of England - unmistakable with its toffee brown body and electric green eyes. Another beautiful dragonfly is the Emperor; very large green/blue in colour with a dark line along the top of its abdomen. We are

familiar with a bright livery of these expert fliers, but you may not have seen their eyes. It's worth getting as close as you can or using binoculars to get a good look, they often resemble beautiful iridescent beads. Strangely, these stunning eyes drain of all colour within an hour of the insect dying. In fact the whole body tends to lose colour when the insect is preserved, which may have saved the dragonflies from the same fate as the butterflies - over-collected for two centuries by enthusiasts.



Migrant Hawker and Ruddy Darter

Several moth-trapping events that have taken place locally. Seen below is a Large Emerald Moth, a remarkable insect with scallop-edged wings not dissimilar in colour to Uranium Glass (if it was a Farrow & Ball colour it would be called something like Mekon's Breath or Grotbags - I'm showing my age now). This was collected and photographed by Barry Yates in the Pannel Valley, where incidentally Glow Worms were also recently spotted.



I think it's been a good year in general for insects locally, although I've had no aphids this year on roses or nasturtiums despite the heat and humidity - presumably because the Lacewing and Hoverfly numbers are so high.

The three meadows in the churchyard are coming to an end of their flowering now, and pretty soon they will be dropping seed for next season, ready to be scythed back down to the ground. Despite these circles only occupying about 2% of the churchyard area they have had a pronounced impact on invertebrates, in particular bees, visiting and in some cases nesting within the boundary walls. In one circle I counted over 60 Red-tailed Bumblebees visiting the Knapweed.

Damselflies, Hoverflies and Butterflies frequented the meadows and I also watched the jackdaws walking among the long grass for either nesting material or food. I think the flowering season can be extended, however, as the walk along Wickham Rock Lane clearly shows some native wildflowers are hitting their peak right now. The vetches are a delicious violet-blue, the Common Fleabane resembles tiny sunflowers, and as the Wild Carrot goes to seed, the large powder-blue flowers of Chicory can be seen in the meadow close to Windmill Cottage.



James Tomlinson

Finally, this is a time when the birdsong in our gardens seems a little quieter, the Swifts are already starting to head south, and by now the Cuckoos have reached Central Africa. If you fancy seeing something feathered and a little exotic, however, search out the cattle in the Brede valley, as they are often accompanied by the aptly named Cattle Egrets. We are very lucky to have this elegant bird, a white heron differing from the more common Little Egrets by having slightly shorter necks and a pale yellow beak. They stalk around the fields, feeding on the small creatures, such as grasshoppers and crickets, disturbed by the feet of livestock. Enjoy the summer!



Portobello

July Open Gardens

Winchelsea's population usually more than doubles when the town's gardeners hold their annual opening for the National Garden Scheme. This year was no exception. 730 visitors turned out and almost £7,500 was raised for NGS charities. Nationally, the Scheme distributes money to organisations working mostly in the field of nursing and cancer support - over £3,500,000 last year.

It was a great community effort, involving not just the owners of the nine gardens that opened but also the friends and neighbours who staff the gates, bake cakes and serve the teas, and look after the car park. Winchelsea has been taking part since the 1980s and in that time over 50 different gardens have participated, including four newcomers this time.

Friary Gardeners mounted a plant stall and received £773 - half of the proceeds from the sale of teas. They work with people with learning difficulties and were founded in Winchelsea before moving to The Ridge in Hastings.

There was a follow-up opening for the Friends of the Memorial Hospital, Rye on Sunday afternoon which raised an additional £800.

On Saturday we had the delight of welcoming a coach party from Belgium. They were members of the Flanders Hardy Plant Society over on a short trip including Wisley, Sissinghurst, Great Dixter and Winchelsea. What more need we say?



Lookout Cottage (above) King's Leap (below)



**Winchelsea
Garden Society**

Summer Show

- Flowers
- Floral Art
- Vegetables
- Fruit
- Handicrafts

Free admission

**The New Hall
Winchelsea**
TN36 4AA

**2:00 pm Saturday
23 August 2025**





Cheryl Fraser-Sampson

Bank Holiday Art

After the excitement of both the D-Day and V-E Day Beacon lightings of last June and this May, followed by the annual art exhibition, the Millennium Artefacts Committee has had a busy time. But the anticipation of setting up this year's 27th annual art exhibition has not dulled our enthusiasm.

Finding new artists to add to our regular Winchelsea exhibitors and those from beyond is always a challenge. But not only have we added ten new artists, we have expanded the scope of the exhibits to craft work. I shall leave that as a surprise. The five children exhibitors from St. Thomas's School aged between 5 and 11 have quite excelled in their imaginative creativity, and now have added a potter among them.

We also have received a rich selection of rather special raffle prizes which with your support will help our fundraising for the maintenance of the three town artefacts. The exhibition will be open at the Court Hall from 10am to 6pm on Bank Holiday Saturday and Sunday, 10am to 3.45pm on Monday.

Geraldine l'Anson



John Wesley's Chapel

A good number visited the Chapel on the Open Gardens Day at the beginning of July.

On 13th July, we celebrated the Chapel's 240th Anniversary with the singing of hymns under the Wesley Tree; most of the hymns used were written by John's brother Charles.

The service in the Chapel was led by Philip and Catherine Wagstaff and at the end they were presented with a modest memento of their times at Winchelsea, in the form of a handmade working clock depicting the Chapel's cross and back cloth seen above the small communion table, as well as bunches of flowers. Philip and Catherine both retire to Devon in early August.

Looking forward, on Saturday 16th August we have a Coffee Morning from 10 until lunch time. It should be a great time to just come and have a cup of tea or coffee and a jolly good chat, and another opportunity to have a nosey around the artefacts at the Chapel.

On the 13th September, the Chapel will be open as part of the National Heritage celebrations, from 10am to 5pm. This coincides with the Sussex Historic Churches Trust Ride and Stride event and during the day there will also be a concert starting around 2pm, presented by Ken Hatch and

the irrepressible Stephen Page, and will include a number of performances by local talent, both musical and the spoken word.

There will be an historic Harvest Thanksgiving service on Saturday 11th October assembling at 10.30am for tea and coffee before the service at 11. Anecdotes and memories of harvest practices from the past will be included together with hymns rarely heard in modern times.

Everyone is very welcome at any of the Chapel events.
Mike Lambourne



Open the Book

'The 'Open the Book' group visited the school in July for their sixth and final story for this academic year entitled 'The Sad Centurion'. Our new recruit Martin played a starring role as a Roman Soldier.



An Afternoon at the Opera

St Thomas' Church
Winchelsea TN36 4EB

**Sunday 7th September
at 4pm**

Tickets online at winchelsea-arts.org.uk
and at the door

£25 (free for under 18s)

Ava Dodd soprano
Dawid Kimberg baritone
**Ashley Fripp and
Mark Nixon** piano

**Winchelsea
Arts**



[Click here to see the full Season programme](#)

Book tickets at winchelsea-arts.org.uk



Speed Check Demo

Helena Dollimore, our MP, and our Police Community Support Officer donned Hi-Vis jackets for a Speed Check Screen demo on the A259.

Speeding on the A259 adjacent to the town continues to be a real concern. Crossing the road to and from the New Hall is a particular challenge. The presence of hi-vis jackets and the speed check screen on Friday 25th July resulted in a significant reduction in traffic speeds.

We will be exploring the possible future use of a speed check sign with a small number of speed watch volunteers in a single hot spot near the New Hall to encourage safer speeds.

We would like to test this by having one session every week for four weeks. We are looking for volunteers to do basic training on using a speed camera and to give 1-2 hours per week for four weeks. (Please email Winchelsea Residents' Association if you can help.)

In early July, Helena Dollimore met a senior officer from National Highways next to the Strand Gate, alongside local residents and Simon McGurk, one of our District Councillors.

We all saw firsthand the poor driving and difficulty negotiating two-way traffic through the Strand Gate and the volume of traffic using the lower A259 junction to drive through the town. National Highways confirmed its commitment to improving the safety of this junction for both pedestrians and drivers. The WRA and Helena Dollimore are in contact with them to progress necessary changes.

There will be a wider WRA update to include feedback from council meetings and the future of local toilets at end of August.

Finally, a reminder that WRA will have a stall at the Winchelsea Fete on 9th August. We will be very pleased to see you there.

RA@winchelsea.com

New Inn Bible Study

The next Bible Study session will take place on Thursday 7th August at 6pm in the New Inn. We will be looking at chapters 9 and 10 of Acts of the Apostles. Everyone is welcome; the session will last for approximately one hour.

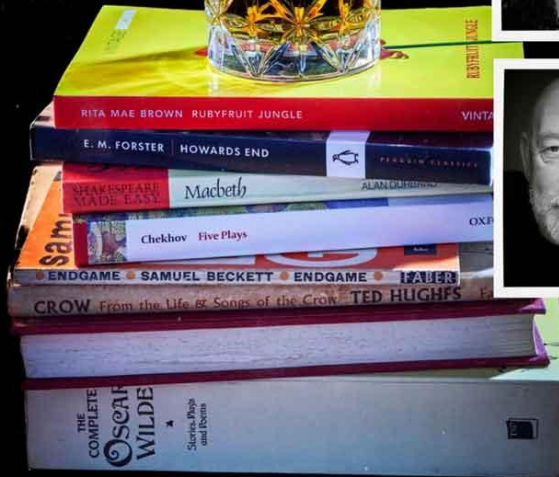
THE ELLEN TERRY BARN THEATRE PRESENT:

EDUCATING RITA

BY WILLY RUSSELL



WITH ZO BIBA
LEONARD AS RITA,
MIKE STONEHAM
AS FRANK, AND
DIRECTED BY
PETER MOULD



THE STABLES THEATRE, HASTINGS

THURSDAY 21 - SATURDAY 23 AUGUST 7:30PM

TICKETS ADULTS £13.50 CHILDREN / MEMBERS £8.50; 01424 423221

WWW.STABLESTHEATRE.CO.UK

stablestheatre.co.uk/educating-rita



Pride and Privilege

June Grindley writes: I often think how lucky and privileged I am to live in Winchelsea: a small town full of history and beauty with interesting people, past and present, and lovely buildings. And I think this most often when I see other, often drab, places where people have to live and the carefully conserved and appreciated 'plus beaux villages' that I visit in France.

One of the latter I visited this June is Le Bec-Hellouin. About the same physical size of Winchelsea, it has about 450 permanent inhabitants, only one or two second homes and a couple of B&Bs. Famous for its Benedictine Abbey and enriched by William the Conqueror often with grants of land in England (hence Tooting Bec), its monks also became early Bishops of Canterbury and Rochester. It is a tourist destination like Winchelsea. It has three or four restaurants or cafes but no pub or shop!

Unlike Winchelsea, where dedicated residents provide the tourists with information, it has a fully manned tourist office. Unlike Winchelsea, where it is up to residents and part-timers to raise money and restore our ancient monuments and to keep up appearances by tending the gardens and grass outside our houses, it has a dedicated

gardener. Unlike Winchelsea, it has not one but three immaculate public toilets. Unlike Winchelsea, its two dilapidated houses are being repaired by young couples eager to live in such a beautiful place. And unlike Winchelsea, its roads have no potholes!

Pride in the village is obvious. Its care is supported wholeheartedly by the commune and French government, probably realising that a beautiful, historic place attracts visitors and supports local businesses and thus tax revenue. Why is it that Winchelsea is not so valued and supported by county or central governments?

Winchelsea Garden Society

Coach outing to

National Trust Garden

Nymans

Thursday 14 August

Departing at 9 am from
German Street and
returning by 5 pm

Travel **£17**

Nymans entry free for NT and
RHS Members - **otherwise £20**

Places are limited to 33 people.
To guarantee your place, please
book and pay Judith Payne by
cash or cheque at Castle
Cottage, Castle Street,
Winchelsea TN36 4EL

For further information, please
contact Howard Norton on
01797 226524 or
howard@ryeview.net





Progress on Church lighting and sound

Work on designing, pricing and funding the new lighting and sound systems for St Thomas's is, despite all appearances, continuing. Following on from the huge amount of groundwork and tangible plans produced by Nigel Ashton, Graham Large and the rest of the Lighting and Sound Committee, two major parts of process are in hand.

The size and specifications, and therefore costs, of both the lighting and sound schemes are being revisited and simplified. Graham Large is, once again, putting in many hours of work to accomplish a lighting scheme that is sensitive to and meets the needs of the church and the congregation as well as being affordable.

New and simpler designs and quotations are being sought for the sound systems, again the aim being something within budget that serves the congregation well. Both systems will be able to be added to as needs may demand and as future funding allows.

In early May the Diocesan Advisory Committee (DAC) approved the basic principles of the lighting and sound plans as presented to them, following which the Faculty (church-speak for planning permission) was sought and obtained from the Consistory Court.

Possession of the Faculty facilitates grant and funding applications and underlines the commitment of your PCC to both sound and lighting improvement projects.

However, grant funding alone will not be enough to see these projects through and the church really needs your personal and individual support.

If you would like to donate to significant and important improvements to St Thomas's interior that will dramatically enhance both worship and community events, please contact David Harris, Treasurer: harrismanuell@outlook.com.



WINCHELSEA FILM NIGHT

In conjunction with Winchelsea New Hall

Summer
Intermission

Please note there is no Film Night in August

Watch this space for news of our Next Screening

Admission Free

Refreshments, Pay Bar.

Thank you for your support. We Look forward to seeing you soon



What were the Crutches?

Inderwick (1892) mentions, *"On a green spot beyond the city wall, a short distance from the gate, rose the Holy Rood (or Cross) of Winchelsea. Land travellers making for the only entrance that would admit them from the road, could see the holy emblem long before they arrived at the portcullised gate, and it was equally visible from the ships that lay in the inner harbour. The House (Hospital) of the Holy Cross overlooked it."*

This was difficult to understand if the gate was thought to be the New Gate, close to the sites predicted by Martin (2004) of St Bartholomew's Hospital and the Hospital of the Holy Cross. For example, this gate does not have evidence of a portcullis. However if the Holy Cross Hospital was much closer to the motel, at the north end of Holy Rood Field, it

starts to make sense. This is supported by the magnetometry data from the Hastings and Area Research Group. The Holy Rood of Winchelsea might then have been in the vicinity of The Crutches, the field west of Crutches Farm. The Roman Road from Icklesham uncovered last year points towards The Crutches field.

Cooper p 34. quoting Jeake (mid-16th C Rye) “*..at the west side of Winchelsea, in the place called Pewes Pond, conceived to have made the harbour, where ships lay at anchor, which the sea afterwards deserting, was one cause of the decay of the place.*” Presumably this is the inner harbour referred to by Inderwick.

Crutches Farm is situated west of the motel and adjacent to the north side of the A259, as it proceeds uphill towards Icklesham. The first farm buildings were only built in 1760. According to the 1994 Report to the National Trust p41, “*The place name ‘Crutches’ means ‘broken pieces of crockery’ or pottery.*” This comes from ‘A Dictionary of the Sussex Dialect’ by the Rev W D Parish (1875, but in a revised 1957 edition)

However an alternative derivation may be that The Crutches field is the site of the Holy Rood that dates back to the foundation of New Winchelsea on Iham Hill. A cross potent, also known as a crutch cross, is a form of heraldic cross with crossbars at the four ends (Wikipedia). The word crouch "was applied in general to such crosses as stood at the intersection of two roads and although they have long disappeared, they have left the name of 'cross' and 'crouch' upon many localities, especially in the South of England. Here the King's highway from Icklesham forms a T-junction with the North-South road running down the west side of Iham Hill from Iham towards Old Winchelsea.

To support this interpretation there is a pub, *The Three Crutches*, on the Roman Road, Old Watling Street, part of Higham village (No, I haven't made this up!) near Rochester. Next to the pub and behind is Crutches Farm.

It is rumoured that a Templar Knight named Sir Richard Braybrooke was murdered by an arrow through the heart, after visiting the local Lord Cobham. His murderer was never caught and a three-sided monument in memory of the Knight was erected and on each side was a cross. The site

was henceforth known as 'The Three Crosses' later developing into 'The Three Crutches' throughout the following centuries.

Andrew Scott



Archaeological and Historical Society

WAAHS has a programme of talks arranged for the autumn.
All will take place at the New Hall

Saturday 20th September 11am - 1pm

A talk by Blake Galloway

Saturday 4th October 10am - 11.30am

A talk by David Staveley

Saturday 29th November 2pm - 4pm

A joint WAAHS and Winchelsea Conservation Society talk
by Anthony Bales

Saturday 6th December 11am - 1pm

A talk by Stephen Gray

winchelseaarchaeologysoc@gmail.com

You can now join or renew your membership online at
membermojo.co.uk/waahs



Fundraising for Pett Church

This week Robin, landlord of The Royal Oak and Kevin, Quiz Master Extraordinaire, presented Heather Godwin, the Treasurer of Pett's Churches, with a magnificent cheque for £2,573.80 - the proceeds of their fortnightly Quiz Nights held from last September to July.

On receiving the cheque Heather said *"this represents a pile of 'poo', as it almost exactly matches the amount paid to have 50 years of pigeon guano removed from the church tower and spire, before essential repair work could be carried out. I bet the Quiz Night participants did not realise that this was where their donations would go!"*

The resources of the Pett Parochial Church Council are being very depleted by these repairs, and every penny is gratefully received.

The Royal Oak Quiz Nights are an excellent way for locals to socialise and raise money for local good causes. The village is lucky to have people like Robin and Kevin who give up their time to help.

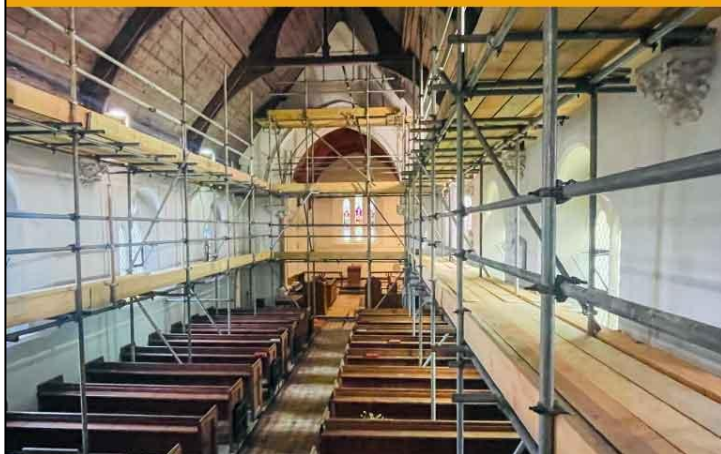
When the next Quiz Night year starts on the 3rd September at 8pm, the local good cause voted for is Hastings and Rother Samaritans - an entirely self-funding charity.

What's going on in Pett Church?

Come and find out on
Sunday 10 August

between 2.30 and 3.30pm
and see the range of renovation work
currently being carried out

Cakes and soft drinks will be available





Rye and District Country Show

Are you looking for a fun, affordable, family day out this summer? Come along to the Rye and District Country Show at Elm Tree Farm in Icklesham for a fun-filled family day on Saturday 16th August, 10am to 4pm.

The Rye and District Country Show is organised annually by a dedicated committee in aid of St Michael's Hospice and has become a staple on the local events calendar. Tickets are only £7.50, with under 16s going free, making it the perfect day out for the whole family.

Visit ryeshow.org.uk to buy your ticket today, or simply turn up on the day to pay. For more information, call 01424 456396 or email fundraising@stmichaels Hospice.com.



Autumn Rail Closures

Passengers travelling between Tunbridge Wells and Hastings and between Bexhill and Hastings are advised to plan ahead as a major programme of improvement work takes place between Saturday 25th October and Sunday 2nd November.

Buses will replace Southeastern trains between Tunbridge Wells and Hastings, and Southern trains between Bexhill and Hastings for all nine days. Engineers will use the time to deliver a wide range of essential upgrades to improve the safety, and performance of the railway. In the Bo Peep and Hastings tunnels, brickwork will be repaired and drainage upgraded to stop leaks damaging railway equipment within the tunnel.

There will be no train services between Tunbridge Wells and Hastings, and between Bexhill and Hastings throughout the closure. A replacement bus service will operate between Tunbridge Wells and Hastings, and between Bexhill and Hastings. A Southern shuttle train service will run between Ashford and Hastings.

In addition to the nine-day closure, on the two weekends before – Saturday 11th and Sunday 12th and Saturday 18th and Sunday 19th October. Buses will also replace trains between Bexhill and Ashford International.

More details at [networkrailmediacentre.co.uk/news](https://www.networkrailmediacentre.co.uk/news)



And from all the deceits of the world....

In the dog days of July's heatwave, those Winchelsea cinéphiles not indisposed by heat exhaustion assembled in the New Hall to allow the 1999 remake of *The Thomas Crown Affair* (1969) to restore their *joie de vivre* .

The original had featured a female investigator (Faye Dunaway) commissioned to track down the brains behind an ingenious bank heist (Steve McQueen) and had finished on an enigmatic note with the huntress apparently nursing ambivalent emotional feelings towards her still elusive quarry. The remake fastforwards to 1999 and the New York of the *dot.com bubble* where Pierce Brosnan reprises McQueen as the bored plutocrat, Thomas Crown, contriving the theft of a masterpiece with his consummate cunning plan despite the labyrinthine security arrangements of the Metropolitan Museum of Art.

His civic-minded offer to the museum of a suitable substitute, from his own collection, to fill the empty space attracts the suspicions of the insurance company's experienced female investigator (Rene Russo). Like a feline predator she stalks her prey, scrutinising Crown at work and play amidst the city's high life. Forcing a face to face encounter, she telegraphs to Crown her belief in his guilt and a cat and mouse game begins.

The audience studies three-dimensional chess never sure who is ahead as Russo has the resources of the plodding New York Police Department at her disposal, while Brosnan either anticipates their moves or ingeniously escapes potential traps. The emotional ambivalence of the original is jettisoned early as the duellists relieve any insidious build up

of excessive tension in a succession of stamina-sapping sexual encounters, set in a range of sumptuous locations.


The plot tightens when Brosnan suggests eloping, a clean break from their respective pasts, judiciously lubricated by their wealth. Could the *Man in the Clapham Odeon* see a Master and a Mistress of respective Universes, hitherto driven by fierce professional pride, combattants in a contest whose watchword is deceit, exchange all that for the mundane emotion of Love?..... No spoilers here, folks!

The Battle of the Sexes framing in *Thomas Crown* is shared by another 1999 reboot where the venerable French novel *Les Liaisons Dangereuses* (1782) inspires the film *Cruel Intentions*, now set among wealthy New York teens.

This captures the action of the original narrative at the expense of the author's thesis of a hypocritical *ancien régime* aristocracy imposing different standards of public morality on men and women. The social chess antagonists in the novel are the Vicomte de Valmont and a former lover, the Marquise de Merteuil, both libertines although social convention allows only Valmont to be openly so.

Their scheme to move various pawns around a social board aiming at seduction, sexual exploitation and revenge ends badly. Valmont is killed in a duel arising from the couple's intrigues while the Marquise suffers consecutive losses; reputation, wealth from ensuing law suits and ultimately her beauty from small pox. She had been prescient in warning the young ladies she mentored in the unfair essence of female existence even without being aware of the burden of those additional genes on that second X-chromosome!

Bill Doherty



St Thomas's Church, Winchelsea

Harvest Festival Barn Dance

Saturday 27th September

In the New Hall 6:30 for 7:00 pm

Tickets £10

BYO Food and Drinks
Music and Dancing with
The Catsfield Steamers

Tickets from The Little Shop and Suttons

In aid of Rye Food Bank All welcome!



Friday Evenings at Tibbs

We're delighted to share that every Friday evening from 6pm, Tibbs Farm Café takes on a new life as a cosy countryside restaurant.

Local chef Nick Hales, formerly of the well-regarded St Clements, leads the kitchen, preparing a small but thoughtfully crafted à la carte menu. Each dish is shaped by what's fresh from our own farm, featuring our home-reared lamb, pork, and now beef from our Pedigree Sussex herd.

Alongside our weekly changing menu, we serve excellent wines, classic aperitifs, and a fine selection of English-hopped beers—some brewed with hops grown right here on the farm. Alternatively, for those wishing to make the most of the summer evenings, drinks and nibbles can be enjoyed on our terrace, with exquisite views over the farm and across the Tillingham Valley.

Booking is advised, but we're always pleased to welcome walk-ins. To book a table email us at: tibbsbookings@gmail.com, call during café hours (9am–4pm): 07469 056088 or simply pop in and speak to us in person. We'd love to see you one Friday evening soon.

What's On Weekly At Winchelsea New Hall

Mondays 09.30-10.15	Pilates with Hannah	Suitable for all. Contact Hannah on 07936 151529 or email hannahpilateshastings@gmail.com
Mondays 15.00-15.50	Zumba Gold	Suitable for all. Contact Daisy at fitnessbythesea@outlook.com
Mondays 16.00-17.00	Pilates with Celia	Suitable for all ages and abilities. Contact Celia on kingcelia54@gmail.com
Tuesdays 14.00-15.30	Tune In Winchelsea	Fun singing group run by local tenor Gary Marriot. All ages and abilities welcome. Contact Rosemarie on 07941 458628
Tuesdays 18.00-20.00	Rother Fitness	Contact Rachel at rotherfitnessgroup@outlook.com
Wednesdays 18.00-19.00	Rother Fitness	Contact Rachel at rotherfitnessgroup@outlook.com
Thursdays 09.30-10.30	Scottish Dancing	A fun, friendly class, suitable for beginners. Contact maddycoelho@hotmail.com
Thursdays 18.00-19.00	Rother Fitness	Contact Rachel rotherfitnessgroup@outlook.com
Fridays 09.30-10.15	Pilates with Hannah	All welcome. Contact Hannah on 07936 151529 or email hannahpilateshastings@gmail.com

**The hall has Table Tennis, Badminton and Pickleball equipment and can be booked on an ad hoc basis for £2 per person per hour (£1 for under 16's) – contact Rosemarie on 07941 458628 or WhatsApp



Rye Food Bank

Cam writes: I am writing to advise you that the next Winchelsea doorstep Food Bank collection on behalf of Rye & Winchelsea Rotary Club , will be on Tuesday 19th August between 10am and 1pm. I have been the town collector for the last 5 years , commencing just before COVID struck, collecting on the 3rd Tuesday of every month. These donations I deliver personally to the Food Bank the following day for distribution to local needy families.

I am always looking for new donors and would be grateful if you would spread the word in the town and tell your neighbours. My telephone number is 01797 226414. I am happy so as not to disturb you , to collect from your gate or doorway or a knock to say thank you - your choice. Please help the Food Bank if you can- we support and help many families in the local area.

I look forward to hearing from you - my answerphone is always switched on.
Kind regards, *Cam Clarke, Old Malt House, Winchelsea.*

For further details about Rye Food Bank and how to make a donation go to ryefoodbank.com

Winchelsea Church and Town Calendar

August 2025

Friday 1st	Wine Society Vineyard Visit
Saturday 2nd	Church Market at St Thomas's - 10.30 till 12
Sunday 3rd	8.30am: Holy Communion (BCP) at Pett Level 11am: Parish Eucharist at Winchelsea
Tuesday 5th	Mothers' Prayers - <i>Morvah</i> , Sea Road - 10am
Thursday 7th	New Inn Bible Study - 6 to 7pm
Saturday 9th	Winchelsea Summer Fete - Cricket Field - noon to 4pm
Sunday 10th	9.30am: Parish Eucharist at Icklesham 11am: Parish Eucharist at Winchelsea
Saturday 16th	Coffee Morning - Wesley's Chapel - from 10am Country Show - Elm Tree Farm - 10am to 4pm
Sunday 17th	<i>Services at Pett are suspended during building work</i> 11am: Parish Eucharist at Winchelsea
Saturday 23rd	Garden Society Summer Show - New Hall - 2pm Millennium Artefacts Art Show - Court Hall - 10am to 6pm
Sunday 24th <i>Bank Holiday weekend</i>	9.30am: Parish Eucharist at Icklesham 11am: Parish Eucharist at Winchelsea Millennium Artefacts Art Show - Court Hall - 10am to 6pm
Monday 25th	Millennium Artefacts Art Show - Court Hall - 10am to 3.45pm
Sunday 31st	11am: Benefice Eucharist at Winchelsea
Sat 6th Sept	Church Market at St Thomas's - 10.30 till 12
Sun 7th Sept	8.30am: Holy Communion (BCP) at Pett Level 11am: Parish Eucharist at Winchelsea Winchelsea Arts Concert - St Thomas's - 4pm

Further ahead

Sat 27th Sept Harvest Supper

Please send copy for the September Magazine
to ryeview@gmail.com
as soon as you have it to hand but, in any case,
before Wednesday 27th August



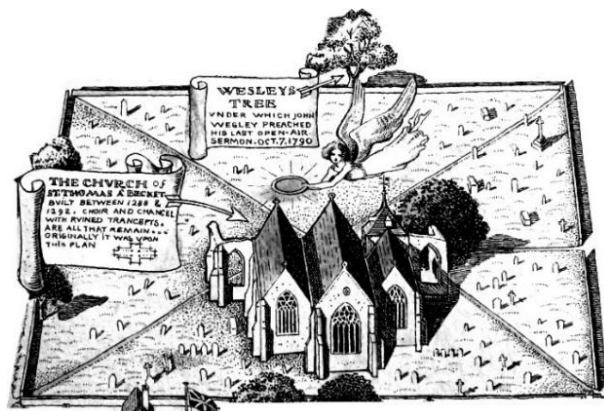
Well Red - Wuthering Heights Day

For Winchelsea Beach information go to
winchelseabeachcommunityassociation.co.uk

For Winchelsea information go to
winchelsea.com

For more information about the Church go to
winchelsea-icklesham-churches.org.uk

For weekly news from the local area go to
ryenews.org.uk



Parishes of Winchelsea Icklesham and Pett

While we await the appointment of a new rector, please contact the PCC Secretary, Mary Parker, with any enquiries about Baptisms, Weddings or Funerals. For all other matters, please contact the Churchwardens.

Churchwardens

Celia King

Stargazer, Morlais Place TN36 4LG
01797 227858 kingcelia54@gmail.com

John Rodley

The Stone House, Barrack Square TN36 4EG
01797 223458 johnrodley@btinternet.com

PCC Secretary

Mary Parker

07927 107678 parkermary848@gmail.com

St Thomas' Primary School

Headteacher Dale Saxby

Friars Road TN36 4ED 01797 226479
office@st-thomas-winchelsea.e-sussex.sch.uk

Parish Magazine

Editor David Page

4 Kent Close TN36 4EX
01797 226524 ryeview@gmail.com