

WINCHELSEA PARISH MAGAZINE

May 2025



Spring flowers by the New Gate *Jim Kay*



VE Day Anniversary Beacon Lighting

This is the programme for the VE Day 80 Reception in the New Hall preceding the lighting of the Beacon on Thursday 8th May. The event is organised by the Millennium Artefacts Society.

7.30 pm

Piper plays in guests. Welcome and Introduction

8.55 pm

The Tribute

9 pm

'I vow to thee my country' followed by the National Anthem

9.15 pm

The piper will lead the guests across the field to the Beacon

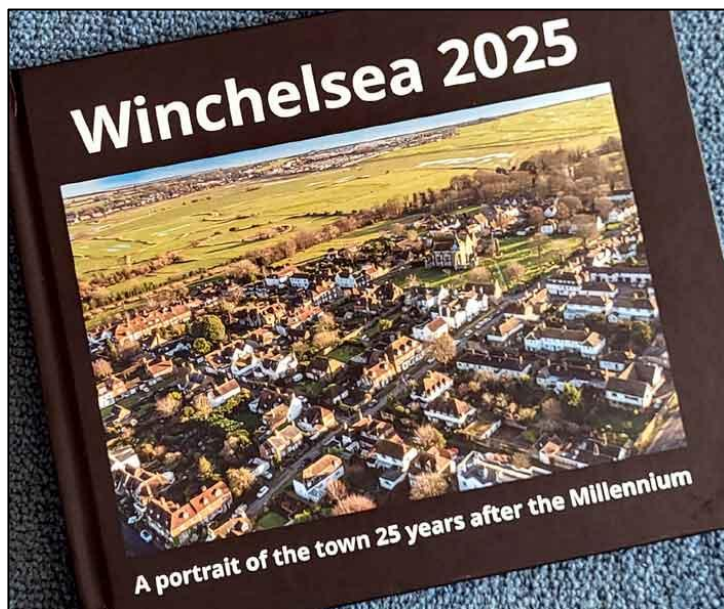
9.25 pm

Prayers

9.30 pm

The lighting of the Beacon

The VE Day story boards exhibition will be extended for a further two days after 8th May in the Court Hall. Visitors, friends and neighbours will be able to study the exhibits in more detail on Saturday 10th and Sunday 11th May from 12 noon to 3 pm.



Have you got your Book yet?

The first batch of copies of the *Winchelsea 2025 Book* are back from the printers so, if you have ordered and paid, they are ready to collect.

The team will be at Church Market on 3rd May so, bring along your receipt and we'll hand you your copy.

If you haven't ordered one yet, this will be a last opportunity to do so. Hardbacks cost £42 and soft covered versions £35. We can take card payments or cash, or cheques made out to 'Winchelsea Millennium Artefacts Society'.

If you can't make it to Church Market, contact Jennifer Sutherland jennycsmith@btinternet.com 01797 224762

We are very grateful to the people of Winchelsea for taking part in the project and for ordering copies, some of which we know are going world-wide



Easter Monday Mayoring

Peter Cosstick writes: Once again, a very memorable day for both Debbie and me, as we enter our last term of office as Mayor and Mayoress. We are very honoured and humbled to serve for a second year.

A huge thank you to the PCC for allowing us the use of the Church for this occasion, with special thanks to Charlotte, Celia, and Judith for their help in making this happen.

The ceremony was attended by almost 200 people, and the sun came out. During the ceremony Jurats (trustees of the charity) were appointed, and we welcomed Phil Mac as a new Jurat.

Rosemarie Roberts has now retired as a Jurat. Rosemarie will be missed and remains a Freeman of the town. She became a Freeman in 2020 and a Jurat the following year. Rosemarie has given so much time and sound advice to the Corporation.

During 2024 Rosemarie (pictured below) led a small team of trustees who were successful in securing much needed grant funding for various Court Hall projects.



Sue McGeown and Jerry Moss became new Freeman and Lorna Challand became an Honorary Freeman. We are delighted that Jo Turner will continue as Curator to our wonderful Museum. Jo has been curator for several years and with all the 'behind the scenes' work, does a fantastic job. Needless to say, without our volunteers it would be very difficult to keep the Museum open.



Now in his thirtieth year of service, Neil Clephane-Cameron was sworn in as Chamberlain and Jo Melvin as Sergeant-at-Mace. Jo, who has been in the role for over four years was

recently accepted into the Mace Bearers Guild. It was a delight to appoint Lorcan Magee as our new Sea Cadet.

During 2024-25 the Corporation has made a number of achievements in both restoration and educational projects. We are very grateful for all the support received which has enabled us to make a lot of progress. We will continue to build on our achievements with more projects in the pipeline.

It was announced that Debbie again wished to choose Demelza as her the chosen charity. It was lovely to see and hear from Donna and Liz representing Demelza. They provided a brief update on their work and how the funds raised by Winchelsea during 2024 are being used, enriching the lives of children and families under the care of the Demelza charity.

A reception was held in the New Hall and once again Stephen and Celia King and their team surpassed themselves in providing wonderful refreshments. Sadly, due to various logistical issues, it was not possible to invite all the community to the reception. With that in mind, Debbie and I will be hosting a very informal event in the Court Hall on Friday 23rd May between 5pm and 6.30pm. So please feel free to pop in and see us.

Our deepest thanks go out to the Winchelsea community for your help, support, volunteering activities and making Winchelsea a wonderful place to live. Debbie and I both feel very blessed to live here and serve the Community.

[You can view the Corporation's Annual Report and Accounts here.](#)

Photos by KT Bruce

Hastings Philharmonic Orchestra

conducted by **Marcio da Silva**

Pasha Mansurov flute



Holst *St Paul's Suite*
Barber *Adagio for Strings*

Clarke *Time Dominoes*
Britten *Simple Symphony*

Saturday 17th May at 7.30pm

Winchelsea Arts

St Thomas' Church Winchelsea
TN36 4EB



dp

Tickets online at
winchelsea-arts.org.uk
and at the door

£24
free for under 18s



[Click here to see the concert programme](#)



Winchelsea Arts Season Ten

An exciting new season of six concerts was launched at the end of April, running from July 2025 to May 2026.

Hastings Philharmonic Orchestra launch the series on 6th July with works by Vivaldi and Greig. There's an 'Afternoon at the Opera' on 7th September and the Pegasus Choir return, with the Outcry Ensemble on 4th October.

The tradition of a Christmas concert by candlelight continues with a performance of *Messiah* on 18th December. Internationally renowned pianist, Pascal Rogé returns on 14th March and the season ends with Jazz clarinet on 9th May 2026.

[Click here to see the full 10th Season programme](#)

Tickets for individual concerts cost £25. You can purchase a single season ticket for £90 or a joint ticket for £170. Season tickets give you admission to all six concerts for less than the price of four.

winchelsea-arts.org.uk

The Little Shop Volunteer Update

On the first Sunday of April, at eight thirty, three slightly apprehensive residents met outside the Little Shop. We had all been trained by Nathan, but now for first time, we were on our own.

We quickly got down to work, the Sunday papers were sorted, the coffee machine primed, sausage rolls placed in the oven, the till switched on, signs placed outside, and by nine, we were ready for action. We were understandably a little nervous, and naturally made a few mistakes (I burnt the first batch of sausage rolls) but once we got into a rhythm it was fun. In no time it was eleven thirty and the next pair of volunteers took over, until it was time to close the shop at two. Then there was a quick clear-up, and by two thirty the shop was locked. Job done!

This is now being repeated each Sunday, as other volunteers lend a hand; hopefully you've already been served by one of us. It's a really important step, as the shop evolves into a community business. We get to understand how the business works, and Nathan gets a well-earned day-off.

So, a big thank you to Nathan, who has patiently trained each of our volunteers - there are over twenty of us now. It makes us all appreciate what a wonderful job he does. Going forward we will also be covering Nathan's holidays and days off, which means we will need more volunteers, so please consider giving up a little of your time each month, and help us keep our shop open. If you are interested, have a word with Ali Casey or Helen Morris, or chat to one of our volunteers.

*Chris Chappell – Shop Volunteer
on behalf of the Shop Steering Group:
David Richards, Rosemarie Roberts, Ian Rowlands,
Glen Marks and Ali Casey.*

Results of the Shop Survey

You may recall that at the town meeting we asked you to complete a questionnaire. Its purpose was to find out what residents felt about the shop and the services it offers and to gauge if the town is supportive of a community shop.

The information will be invaluable in shaping our future plans, and also as evidence to organisations, like the Plunkett Trust, that we are approaching for support.



A huge thank-you to everyone who completed the survey. 115 questionnaires were handed in at the town meeting on 23rd March and an extra 29 were received in the following two weeks, totalling 144.

The overwhelming majority (94%) rated the shop as either vitally important or very important. Roughly half were in each category with 47% of people rating the shop as vitally

important, and 47% as very important. Eight (5.5%) rated it somewhat important and one (0.7%) rated it not at all important.

Many of you commented that the shop fulfils a crucial community function:

“As I don’t drive it’s my lifeline”.

“The community needs this facility”.

“Good for the elderly, or less mobile, and those who don’t drive”.

“It’s a magnet for the community”.

“I would really miss it.”

Others commented about the social and practical aspects:

“Maintaining its presence is important to the community and raises the value of our properties!”

“Very welcoming and friendly”.

“It’s so nice to see people”.

“Saves a daily car journey”.

“A good meeting place”.

93% said they are completely or very much in favour of a community owned and run shop.

“democratic structure builds a sense of ownership”

“More likely to survive and better reflect local needs”

“Community run shops are always very positive and bring positive results”

It is clear from the data and the additional comments that the shop is both well-loved and highly valued.

The overwhelming support for a community owned shop will hopefully provide us with a framework to move forward with community backing. It goes without saying that this cannot work otherwise.

The complete report will be displayed on the shop notice board and published on winchelsea.com.

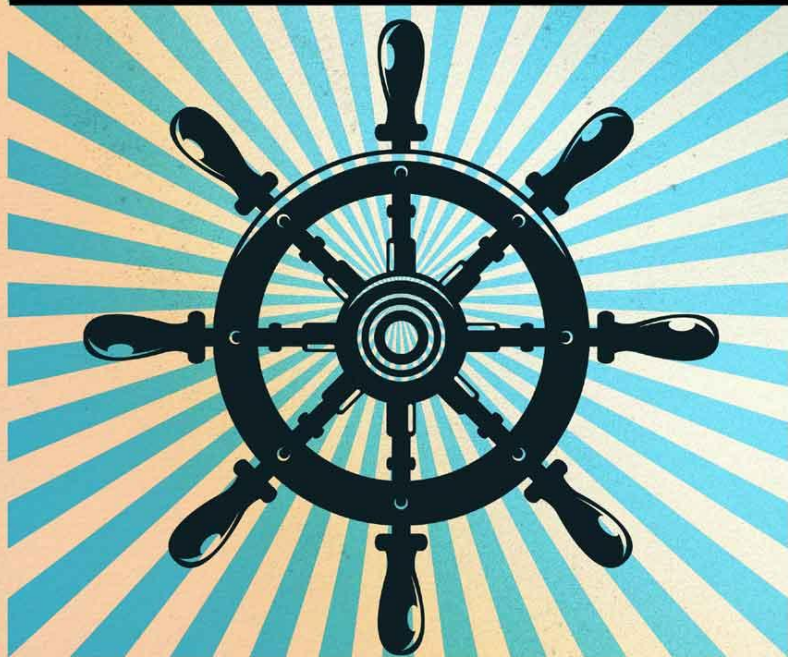
If you have any questions, or can help in any capacity, please contact the Shop Steering Group at shopgroup@winchelsea.com

**THE NEW INN PRESENTS A FUNDRAISING EVENING
IN AID OF DEMELZA**

**RYE HARBOUR HERRINGS
PERFORMING SEA SHANTIES**



MAY 18TH 6PM



**COME ALONG FOR AN EVENING OF SEA
SHANTIES, DRINKS AND FUN. ALL MONEY
RAISED WILL BE GOING TO DEMELZA**

John the Beloved Remembers

*How could I ever forget or regret
What happened then? Seventy years ago
Seems sometimes seven centuries,
At others, seven days. When we met
I was a youth and too naïve to know
How much my life would be changed by His.*

*I remember the side of the sea at Galilee
Where first he made us “fishers of men”:
We left our nets, homes and friends
Following His command almost blindly,
Barely understanding what it meant then:
In our beginnings we rarely know our ends.*

*We called Him Master then, without reservation;
Followed wherever He lead the way
For three years, without the comforts of home,
Not just uncomplainingly but with dedication,
Learning how to listen, heal and pray:
Gethsemane and Golgotha were still to come.*

*I joined the ‘inner circle’ then, with those men
Who were the closest to Him, to whom
He said most; soon I was singled out
Even from them: chosen again and again;
Later, with Peter, I was first at the tomb
And, unlike Thomas, with never a doubt.*

*I loved Him with fierce devotion, a rare emotion,
From the beginning; mine was the arm
He took when tired; mine the shoulder
He leaned upon; I had the exquisite notion
We were somehow living out a psalm
Of David and Jonathan; later, growing bolder*



*I laid my head on His breast, to rest, at supper,
Fed from His fingers, drank from His cup:
Some were jealous, embarrassed or offended
At that last meal, there in the upper
Room; where, in the gathering gloom He looked up,
Blessed bread, and said, His mission was nearly ended.*

*By the Sea of Tiberius I saw Him standing, serious,
Quiet, commanding; Transfigured by grace—
I knew Him at once but the others were fearful;
To me it was nothing remotely mysterious
Except perhaps, the rich radiance of His face—
I ran up the beach to Him, suddenly tearful.*

*After so long a life and ministry, I see
It was the purest love I ever knew:
I was like His cherished younger brother,
He was a hero, mentor, friend to me,
Surpassing all others, however true:
AND it was to me he commended His mother.*

*It's no longer the fashion to talk of Passion
Meaning suffering; but the witness I bore
Then is a true testament for all time:
After the others had written their versions of God's Son
I penned my Gospel of what I heard and saw
As a metaphor, a poem in prose, a spiritual sign...*

John (the sometime Beloved).

Richard Ormrod



Church elections

On Saturday 12th April, the Annual Parish Meeting and the Annual Parochial Church Meeting took place in St Thomas's Church.

The sole purpose of the Annual Parish Meeting is to elect churchwardens for the next year. Celia King and Nigel Ashton had offered themselves for election. Having served five years, a special resolution was needed to confirm that Celia King could stand for a further year. The resolution was passed unanimously, and Celia King and Nigel Ashton were elected as churchwardens.

The Annual Parochial Church Meeting which followed was chaired by David Harris, Treasurer and Vice-Chair of the Parochial Church Council. After confirming the minutes of last year's meeting, the Annual Report for 2024 was reviewed. It was accepted in an amended form.

The various reports detailing the church's activities undertaken last year were noted. Jeremy Naylor explained that the electoral roll had now stood at 78 names.

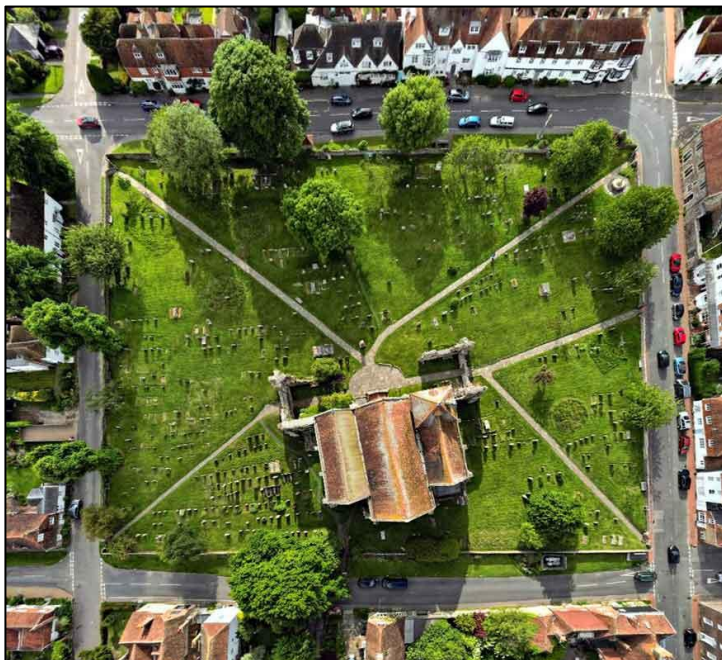
It was noted that the churchwardens and deanery synod representatives, Marion Lovell, Angela Hill and Deborah Rodley are ex-officio members of the Parochial Church Council. Martin Lew Gor, Catherine Burnett, David Harris and Gavin McFadyean were elected and Susan Wood, Alice Bolton, Mary Parker and Jeremy Naylor were re-elected.

John Rodley gave a vote of thanks to David and Pamela Jefferies who had decided to retire from the PCC. He paid tribute to the work they had done over many years at St Thomas's and St Richard's.

David Harris concluded the meeting by outlining the main issues for the coming year: the appointment of a new incumbent; the addition of the Parish of St Peter with St Mary at Pett to the Benefice; the reliance on special donations, legacies and bank interest to cover regular expenditure; the Light and Sound project, and progressing the recommendations from the Parish Awayday in February.

Exceptional Parish Meeting called for 18th May

On 16th April Nigel Ashton resigned as churchwarden. His resignation has been acknowledged by the bishop. There will be an Exceptional Parish Meeting on Sunday 18th May at 12.15pm to elect another churchwarden. The meeting may be attended by anyone on the church electoral roll or on the register for local authority elections.



Friends of Winchelsea Church AGM

The AGM of the Friends of Winchelsea Church will take place at 10.30am on Saturday 10th May in St Thomas's Church. In order to vote at the AGM members must have paid their subscription for 2025. Any member who is unable to attend may request a proxy voting form nominating the chairman or another member to vote on their behalf. Forms must be returned no later than 6pm on Friday 2nd May. Please request a form from the Hon Secretary at friendsofwinchelseachurch@gmail.com

Any member who would like to stand for election as a trustee is requested to email the Hon. Secretary, Jo Marks, at friendsofwinchelseachurch@gmail.com by Friday 2nd May no later than 6pm with the names of the members who will propose and second you and including a short statement outlining the experience that you have which would be relevant to becoming a trustee.

All members will be sent a list of the candidates offering themselves for election together with a short statement from each candidate, during the week prior to the AGM.

WINCHELSEA FILM NIGHT

In conjunction with Winchelsea New Hall

When best friends Jackie O'Shea (Ian Bannen) and Michael O' Sullivan (David Kelly) discover someone in their small Irish village has won the lottery, they immediately set off to see if the winner is in a sharing mood. Only to find him dead from shock....



SATURDAY 24th MAY 6.30 for 7.30 SCREENING
Admission Free
Refreshments, Pay Bar.
Come early, enjoy a drink or two.



John Wesley's Chapel

The Reflections for Holy Week service was beautifully put together by Rev Jonathan and Dr Julie Todd, taking us graphically through the final days that led up to Jesus's crucifixion. The service was very well attended too, and incredibly moving.

On **Saturday 17th May**, we will be having a Coffee Morning from 10am till 12 but with an added twist, with a rather informal presentation by our history expert, David Lambourne, on the history of the Chapel which will be somewhere around 11 o'clock.

Then we will host one of the highlights of the year with a Singing Workshop on **Sunday 15th June** from 3pm to 7pm. This will be led by Stephen Page with an afternoon of instruction and practise, followed by tea and the service.

On **Sunday 13th July**, it will be the traditional Chapel Anniversary (the 240th) led by Revs Philip and Catherine Wagstaff. We shall be singing hymns under the Wesley Tree from 2.30pm before moving on to the service in the Chapel at 3. This will also be the last Chapel event for Philip and Catherine before they deservedly retire to sunny Devon.

The Chapel doors will also be open for visitors on the Open Gardens Days on 31st May (from 10am to 4pm) and 5th July (from 1 to 5pm). All are welcome whenever the Chapel is open. *Mike Lambourne*



At the Beach in May

Mothers' Prayers

Tuesday 6th May at 10am at *Dabchick Cottage*,
Morlais Place.

First Wednesday Coffee Morning

on 7th May from 10.30 - 12.00. There will be a warm and friendly welcome and a chance to meet friends and make new ones. Tea, coffee, biscuits and homemade cakes available and a used book sale.

60s and 70s Disco

7.30pm on Saturday 17th May at WB Community Hall with music by *Sounds Around*. Prize for the best 60s and 70s fancy dress. Bring your own refreshments. Tickets £5 from Mary Parker. 07927 107678 parkermary848@gmail.com

Fellowship Lunch

Friday 30th May. in Winchelsea Beach Community Hall at 12.30 for 1pm. No charge but donations are welcomed. All proceeds are given to charity. Please contact Mary Parker to book your place on 07927 107678 or parkermary848@gmail.com



Friends of the Ancient Monuments

Early in April FOAM held their annual general meeting. Over 30 members were present, but if you were unable to attend, here is a brief summary of the topics covered. 2024 has been another great year for our charity, income was up by 16%, to a record breaking £24,000. While we provided grants to Winchelsea Corporation totalling more than £16,000. These were used for the restoration of the west elevation and chimney stack of the Court Hall and clearing vegetation from the three town gates. The money was generated from our 170 members, cellar tours and a series of special events during the year.

In 2025 FOAM plan to support the refurbishment of the Lower Court Hall door and stone surround and provide funding to the museum, for their project to conserve the Anne gun as part of the Museum's 75th anniversary. April saw the start of a new season of cellar tours, with three new guides joining the team. Last year over a thousand people visited the town's cellars, bringing important revenue to FOAM, the Museum, and businesses in the town.

The FOAM Committee: Chris Chappell, Mark Harris, Phil Mack, Glen Marks and Ian Rowlands



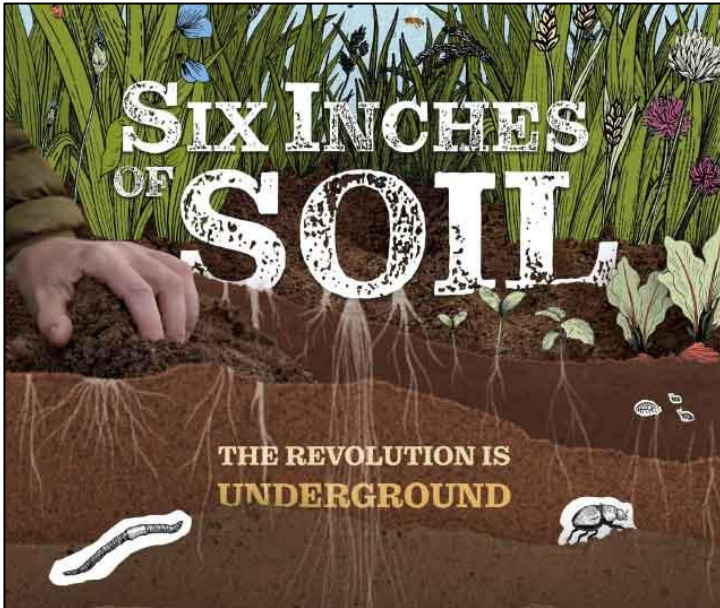
Special Free Event for New Residents and those who have yet to join FOAM

If you are new to Winchelsea (or fairly new), FOAM would like to invite you to a special tour of the town at 2.30pm on Saturday 17th May. It will be an opportunity to find out a little more about our wonderful town's history, its buildings, and medieval cellars, from our knowledgeable guides, and to discover how our charity and its 170 members help maintain some of them. And if you aren't new but have simply never quite got round to joining FOAM, you are also very welcome to come along.

The tour will last about an hour and a half and include a visit to the Court Hall and a couple of Winchelsea's unique medieval wine cellars. It's absolutely free, but if you haven't already joined FOAM, there is a good chance that our membership secretary will try to enrol you.

If you would like to book a place, please contact Chris Chappell chriswinchelsea@icloud.com or any other member of the FOAM committee.

FOAM, the Friends of the Ancient Monuments and Museum, work with Winchelsea Corporation to raise money each year to keep the Court Hall, our three medieval gates and the Town Well in good shape as well as contributing to improvements to the Museum.



Conservation Society AGM

The AGM of Winchelsea Conservation Society will be held in the New Hall at 4pm on Saturday 10th May.

There will also be a showing of the film *Six Inches of Soil* about three young farmers who, with their mentors and advisors, embarked on the first year of their journey to regenerate the soil of their farms. They are an eleventh-generation Lincolnshire arable farmer, a small-scale vegetable farmer in Cambridgeshire and a farmer of pasture-fed beef in Devon

Under the terms of conditions for showing the film, WCS cannot charge an entrance or viewing fee. However, refreshments will be served and any members attending are encouraged to bring along a non-member if they wish.

Subscription charges for current or new members will be taken in cash - £5 per person.

Jerry Moss



Gardens Open for St Michael's Hospice

Five Winchelsea Gardens will open for the Hospice on Saturday 31st May between 10.30am and 4pm. Tickets cost £7.50 and can be bought online or at the Court Hall where teas will also be served. The gardens involved are the Kent Close Communal Garden, King's Leap, Cleveland Place and White Cottage in Friars Road, and South Mariteau.

Fairlight End will open for the Hospice on Saturday 7th June and eight gardens at Winchelsea Beach on Saturday 28th June.

Click here for more information:

stmichaelshospice.com/event/opengardens2025

The National Garden Scheme opening in Winchelsea will take place on the afternoon of Saturday 5th July, with a follow-on opening for the Friends of the Memorial Hospital Rye on Sunday 6th. Nine gardens will be opening - and a Belgian coach party from the Flanders Hardy Plant Society have already been in touch to arrange their visit.

Winchelsea
Garden Society

**Trudie
Easton**

**Nature's
Pharmacy**

The RHS Chelsea exhibitor will talk about the medicinal properties of plants and use them to create 3 arrangements

The New Hall Winchelsea
2:30 pm Saturday
17 May 2025

Admission **£5** including a raffle ticket. Floral arrangements will be awarded to 3 winning raffle ticket holders





Garden Society Outing on 29th May

Garden Society is organising an outing to two award-winning gardens in Seaford on Thursday 29th May.

We will be going to *Cupani* and *Driftwood*. *Driftwood* has appeared twice on *Gardeners' World*. The trip includes coffee, cake and a talk at *Cupani*.

We will leave Winchelsea at 9am and be home by 5pm. It might be wise to bring a snack for lunch.

We are only charging £20 a head, which is a bargain, so we are bound to fill the coach. Make sure of your seat by booking early with our treasurer, Judith Payne at *Castle Cottage* in Castle Street. 01797 224861.



Barnardo's - A Personal Insight

Paul Beard worked for the charity Barnardo's and now supports it as a volunteer ambassador. Consequently, Paul is passionate about the organisation and brings a very personal insight into the workings of Barnardo's today and its history.

Join Second Wednesday Society for the talk, meet up with friends and neighbours and enjoy the homemade tea afterwards. ... not forgetting Tessa's Raffle

14th May at 2.30pm in the New Hall

Visitors £5 Homemade tea £2

ST THOMAS SCHOOL PTA

SATURDAY 9TH AUGUST 2025

WINCHELSEA TOWN
SUMMER FETE

AT THE NEW HALL / WINCHELSEA CRICKET CLUB

! WANTED !

**STALL HOLDERS
VOLUNTEERS
DONATIONS**

ST THOMAS SCHOOL PTA ARE HOSTING THE WINCHELSEA TOWN FETE THIS YEAR. IF YOU CAN SUPPORT IN ANYWAY PLEASE GET IN TOUCH

Events Dog Show, Bouncy Castle, Entertainment, BBQ, Craft & Artisan Stalls, Fun & Games, Raffle and much more

For more information contact Claire Cooper:
07868 368 802 /winchelsea@Aura-Energy.uk

Preparing for the Summer Fete

This year the Fete will be held on Saturday 9th August and is being hosted by the St Thomas' School PTA.

If anyone wishes to volunteer to help or provide any support in the lead up to the event or on the day, please contact Claire Cooper winchelsea@aura-energy.uk or 07868 368 802.

Any organisations or businesses that would like to have a pitch at the event also please contact Claire. Other support we will be looking for in the lead up to the event are donations for our tombola and for the raffle.

If you can help in anyway, please get in touch!

Thanks in advance for your support, Claire and St Thomas' PTA.



Icklesham Parish Council

Winchelsea Beach Bus Shelter We are also pleased to finally report that the long-awaited bus shelter has been installed in Winchelsea Beach. Icklesham Parish Council are very aware of how many people use the bus in Winchelsea Beach and also how awful the driving rain can be here during the winter months. We hope that the new shelter will mean residents, including school children, can get to their final destination without getting soaked.

We secured match-funding from East Sussex Highways for the bus shelter and the installation in the sum of £5,621.30. The Parish Council also received a Community Grant from Rother District Council in the sum of £2,690.88 so a massive thank you to these organisations for their financial support in finally delivering this project.

Rye Harbour Toilets IPC are pleased to report that the old fashioned trough style urinal in the men's toilets in Rye Harbour has now been replaced by two waterless urinals. It is estimated that each new waterless urinal will save around 100,000 litres of water per year. However, we suspect that we will actually be saving more than this as the old urinal was using a lot more water than the standard water urinals due to its age and the size of the cistern and the fact that it was flushing every 15 minutes. Reducing water

usage has many benefits. For example, by reducing our water usage we can reduce the strain on water sources and help maintain their quality. Water conservation can also contribute to climate change mitigation by reducing energy consumption and greenhouse gas emissions. Less water usage also means less energy is needed for treatment and distribution, leading to a smaller carbon footprint.

IPC residents will benefit directly from this as it will reduce the Parish Council's water and waste bills which will in turn reduce the size of our precept. We were very grateful to Rother DC who provided £1,000 grant money towards the project costs this came from their 'Reduce, Reuse and Recycle' scheme. At the same time two new PVC windows have replaced the old timber frames which were old and rotten and this will cut down on maintenance costs in the future.

Annual Parish Meeting This year the Annual Parish Meeting will take place on Friday 30th May at 7 pm at Winchelsea New Hall. Our first speaker who has confirmed is East Sussex County Council Leader Cllr Keith Glazier who is going to give a presentation on the upcoming plans for Devolution and Local Government Reorganisation. There will be the usual Community Awards for residents who have gone above and beyond followed by refreshments so we look forward to seeing you there.

Allotments We currently have allotment plots available at our Cricket Field site in Winchelsea. If you would like to apply please either download an application form from our website, or contact the Parish Clerk.

Upcoming Meetings

Monday 12th May – Planning Meeting followed by Annual Council Meeting 6.15 pm at Icklesham Memorial Hall

Monday 9th June – Planning Meeting followed by Open Spaces Committee Meeting 6.15 pm at Winchelsea Court Hall

Please remember IPC are here to represent you and welcome your views on any matter. Please send your views and requests to clerk@icklesham-pc.gov.uk or write to
PO Box 148 Winchelsea TN31 9FP 07714 169901



WRA Members' Meeting

Winchelsea Residents' Association held its half-yearly meeting for members in the New Hall on 29th March with financial updates and progress reports on our recent activities. We were pleased to invite Simon Everett from the National Trust to speak and to see our local district councillor Simon McGurk at the meeting. We also want to thank our MP Helena Doolittle for her continuing interest and support for our local initiatives.

Subscriptions Members' subscription will be held at £10 per member for this financial year. This will cover current overheads, primarily insurance, IT hosting and printing, with a small contingency fund. Thanks to those who paid on the day. Outstanding subscriptions can be paid directly to WRA and our bank details are sort code 60-02-07; account 59667362. If you would prefer to pay by cheque or cash, we can arrange collection.

Toilets We have ensured that Rother DC has kept a single local toilet open but the building's future remains uncertain. It is advertised for sale but we are not aware of any current commercial interest. We have asked Rother DC to clarify how long it may remain on the market and their contingency plans, should it fail to sell.

Traffic safety National Highways has recently confirmed it is considering introducing no left turn/ no right turn at the

bottom of Strand Hill without new construction. Their more flexible approach is very welcome and is based on the need to improve road safety at the junction with the A259.

National Highways is also willing to pay some of the costs. This is good news but we have to wait for National Highways to complete yet another safety assessment before a final decision is made to go ahead or not. There is no guarantee of agreement at this stage but the agency has advised it will let us know by end of May.

National Trust Simon Everett, one of the new local National Trust staff gave a helpful update on NT activities at the members meeting, in particular plans for local livestock grazing and the need to treat specific sites with appropriate chemicals to keep down unwanted growth.

We look forward to seeing members at our next meeting later in the year and you can contact us at any time about issues affecting the town by email at RA@winchelsea.com

Update from the New Hall

Stage Lighting

The New Hall is starting to prepare for new stage lighting this spring with the aim of having a new system in time for our centenary in 2026 (more information to come on a 'hold the date' soon). In the meantime we are working on increasing the usage of the stage and are in discussions with a number of theatre and music groups.

100 Club

The winning number for the 100 Club for April is 103. Congratulations to the winner! You should already have the money in your account.



Reed Warblers can't count

Reed Warblers can't count - or so it would appear. Reed Warblers with one chick in the nest will bring exactly the right amount of food to raise that one chick. If a warbler has a nest with four chicks, it will bring four times that amount of food - common sense you would think. So why is it, when a single Cuckoo chick sits in a Warbler's nest, the parents exhaust themselves ferrying mountains of food into the eager Cuckoo's mouth? Believing it was the sheer size of the Cuckoo chick that incited the Warblers to work overtime, scientists tried replacing it with an equally large Blackbird chick. The Warblers went back to providing enough food for just one chick.

The ingenious weapon in the ever raging arms race between Cuckoos and Warblers, is that a Cuckoo chick makes the sound of a nest full of Warbler chicks. Therefore Warblers don't look in their nests and 'count' the number of chicks they have, they base their feeding regime on the sound their chicks make. This vocal manipulation is just one of a number of sneaky tricks Cuckoos employ in order to save themselves the trouble of nest building and rearing their offspring.

The reason I bring up Cuckoos is because they have just started arriving on the south coast following their long and perilous journey from Central Africa. Take a walk along the Military Canal and you can hear the wonderful scratchy song of Reed, Sedge, and Cetti's Warblers - all of whom are

unfortunate in playing host to Cuckoos. Three male Cuckoos could be heard from Wickham Manor last May, one is already audible in the Brede Valley. Swifts too have appeared just at the time of writing this article.

A short walk beyond New Gate currently reveals a beautiful tapestry of Bluebells, Lesser Celandine, Yellow Archangel, Bush Vetch, Greater Stitchwort, and Pink Campion. This feast is rewarded further by the soundscape of birdsong, building as you travel along the canal to the crescendo of gulls and waders at the bird hides. The cacophony makes a noticeable jump upward when the Marsh Harrier pops by. If you are very lucky you may catch sight of Common Lizards at the foot of the New Gate along the way.



Slow Worms seem to do well in Winchelsea, and should be welcomed by gardeners as they are one of the few native creatures to actively eat slugs (Hedgehogs, Frogs and Toads only tend to predate slugs as a last resort, sadly). A heap of rotting vegetation and grass cuttings will provide the perfect cover for them. For true enthusiasts I can recommend a sheet of corrugated iron or roofing felt laid on the ground. I have found as many as five Slow Worms and two Grass Snakes beneath one sheet of iron - both species often tightly interlaced to conserve heat, as evidenced in this photo.

A hot-spot of insect diversity by the Military Canal exists in the form of a few square metres of sand and broken rock. Here Grey Backed Mining bees have been spotted, a rarity that only occasionally makes an appearance in the UK. It is also home to a solid population of Green Tiger Beetles (a stunning bejewelled brooch of a beetle that rattles along at 60cm per second), Copper Greenclock beetles, Violet Ground Beetles, Devil's Coach Horseback Beetles, Wasp Beetles and recently spotted by Steve Train, an Oil Beetle.



Though we are blessed with beetles here, I can't help but notice a worrying trend in that those ever-present in my childhood are now uncommon - Ladybirds being one example. As a child I considered 2-spot ladybirds 'boring' because they were numerous, (once Britain's commonest ladybird), but now seldom seen in my garden. The tiny 22-Spot Ladybird has all but vanished, as has the Cream Spot, 11 Spot, and Orange Ladybird. Conversely, the Harlequin ladybird that only arrived in the UK around 2004, hibernates in my house by the hundred.

What can we do? Well, try and forgo aphid treatments, as aphids recover far quicker than their predators do from insecticides. Although unpopular, aphids are an important platform upon which a raft of invertebrates depend, rather like the plankton in the food-chain of the ocean. Lacewing larvae are voracious consumers of aphids, but sadly their numbers are rapidly falling. In fact, a study found that flying insect numbers in Kent have dropped by a staggering 74% since 2004. Long term it pays to let nature find a balance in your garden, and it will, believe me - and reward you tenfold.

Next Month, Moths: the groovy kind of 70's-largely-brown-corduroy-wearing relatives of the butterflies.

Jim Kay

Winchelsea Garden Society

Rose Show

Saturday 7 June in
St Thomas' Church
alongside the
Church Market

4 classes, entries free

Class 1 Roses

Class 2 Sweet Peas

Class 3 Clematis

Class 4 Iris

All exhibits to be displayed
between 9:30 and 10:30.
Presentation of cups at 11:30

**Maximum vase size 15 cm
in diameter**





Queensberry Rules

And on this Friday that is called Good – the Golgotha summit of the Lenten spiritual pilgrimage – the great-grandson of the ninth Marquess of Queensberry, the Mosaic Lawgiving patriarch of today's sport (?) of Boxing, visited Winchelsea's Literary Society to recite, in his trademark dramatic style, T.S. Eliot's masterpiece *Four Quartets*, the work that won him the 1948 Nobel Prize for Literature, but arguably his least accessible poem.

Transfigured by the subtly adjusted stage lighting and imposingly enthroned, Gawain Douglas summoned his muse with an almost palpable intensity. Imaginatively acknowledging Eliot's debt to a late Beethoven string quartet for inspiration, our speaker's wife, Nikki, filled the interludes between the sections of the Quartets with musical accompaniment on the keyboard, leaving Chuck Berry's *Roll Over Beethoven* out the musical miscellany.

Musical inspiration furnished the scaffolding on which Eliot constructed his masterpiece, the poet imitating the composer in subdividing his quartets into five movements. All four are named, *Burnt Norton* and *East Coker* being West Country manor houses and *Little Gidding* the descendent of a Jacobean Anglican community.

The Dry Salvages breaks with rural English idyll and represents a homage to *time past*, Atlantic rocks off Rockport, Massachusetts, where Eliot sailed in his youth. The nautical setting encourages a motif of tidal rhythms, the rocks being more imposing at low tide.

East Coker links with Eliot's family history; an ancestor emigrated from there in 1667 to the Puritan hotbed of New England and was sufficiently embedded to be a judge in the Salem witch trials. This piece foregrounds the circularity of life, opening by inverting the famous Mary Queen of Scots quote about her beginning being in her end and finishes with the conventional version. Eliot's decision to have his ashes interred there suggests he fully embraced the notion.

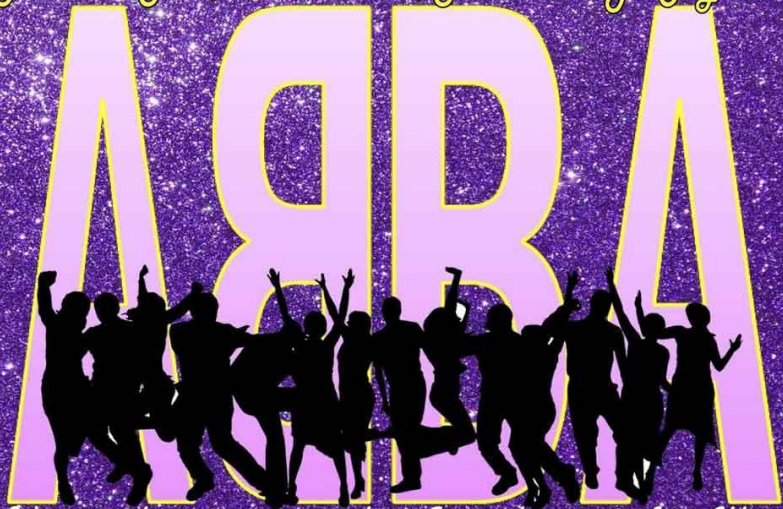
A thread of mysticism, both religious and philosophical, runs through the Quartets and the alert listener/reader can detect the influence of Julian of Norwich, St. John of the Cross, Ecclesiastes, Calvin, Heraclitus, Dante, Milton and the Bhagavad-Gita. Critics praise Eliot for the precision of his vocabulary and for avoiding pedantry, plucking a mission statement from the text:*and speech impelled us To purify the dialect of the tribe And urge the mind to aftersight and foresight.* Finding words like *haruspicate* (prediction from animal entrails) and *scry* (crystal gazing) in the text might contradict these opinions and risk the work being renamed *The Foresight Saga!*

The audience departed, intellectually and spiritually sated, the last lines of *Little Gidding* still ringing in their ears but with sensation heightened:*in the stillness Between two waves of the sea.* Some reassured: *All manner of thing shall be well.* Others anxious over the fate of Dante's symbol of Nature's perfection, the *Celestial Rose: And the fire and the rose are one.*

But the Gospel or Good News must be spread and for Paschal proselytes, enthused by this lyrical presentation and having rolled Beethoven over, it was time to *tell Tchaikovsky the news.*

Bill Doherty

Mamma Mia, Winchelsea, Here We Go Again!



It's time to dig out your sequins, dance & sing along to your fave Abba

NIGHT

SATURDAY, 21st JUNE, 6.30 for 7pm

WINCHELSEA NEW HALL

Tickets: £15 (including welcome cocktail)

Swedo-Greek Mezze

Bring Your Own bottle (no Bar, no raffle)

Tickets on sale at CHURCH MARKET, SATURDAY 3rd May
or contact Jane A-07958 251742 / David D-07758 962824 / Hilary R-07923 451431

Supporting the Community Shop

Hej! all you *Chiquititas* and *Ferdinandos*! From the team that took you to Bollywood and Holyrood, let's celebrate "Midsommar" in *Summer Night City* Stockholm and Kalokairi! *Knowing Me, Knowing You* it will be an evening to remember.

Put on your sequins, release your inner *Dancing Queen* and get ready to dance, sing and dine the night away to all your ABBA favourites. As ever, dress to impress the organisers for spot prizes.

There will be an opportunity to contribute further to the Community Shop Project on the night in the *Take a Chance on Me* ABBA lottery (cash or card). *The Winner Takes it All* – A delicious Greek Meal for Two at Opa Opa in our very own island of Greece in Bexhill

Ticket launch to Winchelsea residents at the Church Market on Saturday 3rd May and throughout May from Jane Archutowska: 07958 251742 David Dickson: 07758 962824 Hilary Roome: 07923 451431. Tickets on sale to the general public in June.

Please note we cannot guarantee you *A Man After Midnight* because the evening finishes at 10:30 pm. However, you will be saying *Thank You for the Music....*



Beating the Bounds

The Archaeological and Historical Society jointly with the Conservation Society will meet at 2.15pm on Saturday 24th May at the end of Mill Road by the Stables. All are welcome.

Beating the Bounds is an ancient tradition held in the week before Rogation Sunday, five weeks after Easter. This year Rogation Sunday is on 25th May. So it is entirely appropriate that our walk on 24th May is based on Petit Iham.

The tradition has been described as “a way of noticing local details and also of protecting open spaces and wildlife.” So what could be more fitting as a theme for our walk than, *“Beating the Bounds around Petit Iham”*?

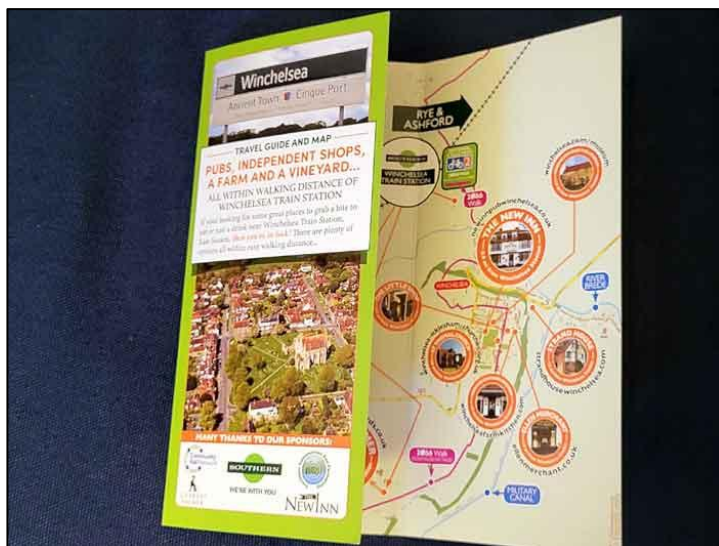
As some of the boundary stones around Petit Iham are eroded and not always vertical, we will not beat the stones with willow sticks, or bounce the Mayor on top of the stones as was the tradition in Hastings (photograph was taken at Hooe level 1909) - no doubt, to our Mayor's great relief!

In particular we will look at the remains of the old village of Petit Iham, a Cinque Port limb of Hastings - to include the Saxon church of St Leonard; the site of the Motte and Bailey Castle, as revealed by magnetometry; the site adjacent to St Leonards Well where new magnetometry data from the National Trust has shown a much more detailed and

extensive building than previously shown on survey work, assumed to be the second site of the Blackfriars Friary.

In addition there are clear views of the Icklesham ridge where survey work has recently been carried out searching for an extension of the Roman Road towards Winchelsea. The walk will be of special interest to new residents of Winchelsea to learn about Iham Hill before transfer of the town from Old Winchelsea at the end of the 13th Century.

Do wear stout shoes, particularly if it rains near the time of the walk. Any queries to andrewscottb@aol.com or jngrindley@btinternet.com



Travel Guide and Map

A local group has come together with Southern Rail to produce a map and guide to local shops, and places to eat and drink, and things to see.



Joyce O'Ferrall 1926-2025

Joyce - pictured here with Deborah for the 2025 Winchelsea Book - died peacefully at the Hazel Lodge Care Home in Battle on 5th April. Deborah and the family wish to thank Winchelsea residents, present and past, for their kind messages of condolence and support, as well as for their memories of Joyce.

A private family service took place at Hastings Crematorium on 24th April and Joyce's ashes will be interred with Basil in Winchelsea churchyard.

A Thanksgiving Service is being planned for Friday 11th July in the Church, followed by tea in the New Hall.



Rescue Boat News

Out on shouts (and BBC coverage) At 01:50 on 3rd April we were tasked to two young male casualties who had become lost and in difficulty after setting out for a late-night adventure. Despite the early hour, our volunteer crew were assembled and launched in around 20 minutes. The casualties were located using What Three Words and the lads used their phone torches to indicate their position.

As they were close to Cliff End, our crew were on scene in minutes, conducted a swift extraction and brought them safely back to the slip. A comment from one of the parents on Facebook that mentioned the boys volunteering for the day was picked up by the local BBC station and on Sunday a film crew visited to film the lads and the crew who went out to rescue them. A fantastic and much needed bit of promotion for PLIRB and ALL independent lifeboat services.

New recruits Our recruitment drive was incredibly successful and we are delighted to welcome five new volunteers. Each one will embark on a period of induction before progressing to training – whether boat or shore crew or as one of our admin/events/fundraising team. Welcome to all of them.

Appeal for a Finance Manager (Treasurer) We are looking to recruit a volunteer Finance Manager to join our Operations Management Team. Stella and Kevin have done an amazing job over recent years but need to focus on other activities – although they will remain to provide full support. If you are interested, or perhaps know someone who might be, please get in touch by email to plirbrescue@gmail.com or call 01414 812457. We can provide a full role description and are happy to chat through the role in more detail.

Boathouse development At the time of publication, the opportunity for submitting comments will be closing and we hope to announce the outcome soon. The development is a massively exciting time for us as we look to secure the long-term future of our service. As a summary, the development will see the rebuild and extension of our small garage to become a single unit with our main boathouse. This will provide the additional space we need as we plan for our future lifeboat, and crucially, to enhance the flexibility and efficiency of our launches.

Our ambitious fundraising goal is £120,000 – a huge target. We are applying for grants and looking for donations (corporate and individual). Please do contact us at plirbrescue@gmail.com or call 01424 812 457 if you have any thoughts or ideas or would like to make a donation.



Contact list We are building our contact list so we can keep our supporters up to date with news, events and fundraising updates. We promise not to spam and you can opt out at any time but we hope it will be of interest. If you would like to be added to our contact list, please email your full name and email address to plirbrescue@gmail.com

Crew news We held our AGM in April during which we received reports from the Chair and Treasurer and reconfirmed the election of the Operations Management Team who were appointed at the EGM in January. The brilliant Charity Shed is making its return. It may not be open every Sunday, but when it is you can expect to find some super high-quality homeware items. Pop down and have a browse!

PLIRB Thanks A huge thank you to the Diamond Divas for organising donation of £700 for their special Shanty Night supper event at Beckley Village Hall in March. Our Pett Slip Buoys sang to a crowded room, alongside the fabulous Rye Bay Crew.

Upcoming Events **23rd-26th May:** PettFest is back! Your local beer festival at the Royal Oak. Live music, great beer and food. **21st June:** Fairfest – we'll be running the BBQ and the Pett Slip Buoys are singing.

Contact us: www.plirb.org info@plirb.org 01424 812 457
Follow us on Facebook, Instagram and LinkedIn

St Michael's Hospice

Top tips for at-home guided relaxation

St Michael's Hospice offers an extensive Wellbeing Programme to help support the physical, emotional, spiritual and social needs of patients. Colin, one of the Wellbeing Assistants at the Hospice shares some top tips for at-home guided relaxation. Get yourself a cup of tea, sit down and try these five simple steps:

1. Place your hand over your heart to feel the warmth of your hand against your chest.
2. Breathe gently and deeply while focussing on the warmth of your hand over your heart.
3. Breathe in while welcoming a sense of peacefulness, safety and calmness.
4. Reflect on a moment you felt safe, loved and cherished.
5. Let the warm feelings from that moment sit with you and breathe out.

Visit stmichaelsospice.com to find out about our Wellbeing Programme.

Jane's story of leaving a legacy for St Michael's Hospice

In 1991, the Hospice cared for Jane's father during the final hours of his life. Following his death, Jane became an active volunteer for the Hospice, running stalls at the coffee mornings, hand-delivering newsletters, and offering her time at many Hospice events.

Sadly, Jane was diagnosed with cancer and in January 2022, was admitted to the Hospice and died nine days later. Jane had written a Will, remembering her family and friends, but also several important charities she supported during her lifetime, one of which was St Michael's Hospice. She left a share of her estate to the Hospice, to bring comfort and support to future patients and people who are important to them. Just as the Hospice did for her father in 1991, and herself 31 years later.

Gifts like Jane's are so important to the Hospice. If you would like to help protect hospice care for future generations with a special gift in your Will, visit stmichaelsospice.com/giftsinwills or email giftsinwills@stmichaelsospice.com



Rye Food Bank

Cam writes, 'I have fully recovered from knee replacement surgery and return to doing the Food Bank doorstep collections in Winchelsea on Tuesday morning, 20th May. I would like to thank Martin Owen and Stuart Raine who deputised for me during my absence and those residents who made Easter donations in April which included Easter eggs for the children, which were greatly appreciated. In parallel, the local Rye and Winchelsea Rotary Club donated £100 towards the purchase of Easter eggs for Food Bank families'

You can also take contributions directly to the food bank on any Wednesday morning before 11.30. Rye Food Bank is located at the Baptist Church in Cinque Ports Street and has its own car park to the rear of the building. Jempson's in Rye also has a collection point for donations in store.

Financial donations are also much appreciated.

For further details about Rye Food Bank and how to make a donation go to ryefoodbank.com

Donald Cameron-Clarke 01797 226414

What's On Weekly At Winchelsea New Hall

Mondays 09.30-10.15	Pilates with Hannah	Suitable for all. Contact Hannah on 07936 151529 or email hannahpilateshastings@gmail.com
Mondays 15.00-15.50	Zumba Gold	Suitable for all. Contact Daisy at fitnessbythesea@outlook.com
Mondays 16.00-17.00	Pilates with Celia	Suitable for all ages and abilities. Contact Celia on kingcelia54@gmail.com
Tuesdays 14.00-15.30	Tune In Winchelsea	Fun singing group run by local tenor Gary Marriot. All ages and abilities welcome. Contact Rosemarie on 07941 458628
Tuesdays 18.00-20.00	Rother Fitness	Contact Rachel at rotherfitnessgroup@outlook.com
Wednesdays 18.00-19.00	Rother Fitness	Contact Rachel at rotherfitnessgroup@outlook.com
Thursdays 09.30-10.30	Scottish Dancing	A fun, friendly class, suitable for beginners. Contact maddycoelho@hotmail.com
Thursdays 18.00-19.00	Rother Fitness	Contact Rachel rotherfitnessgroup@outlook.com
Fridays 09.30-10.15	Pilates with Hannah	All welcome. Contact Hannah on 07936 151529 or email hannahpilateshastings@gmail.com

**The hall has Table Tennis, Badminton and Pickleball equipment and can be booked on an ad hoc basis for £2 per person per hour (£1 for under 16's) – contact Rosemarie on 07941 458628 or WhatsApp

Winchelsea Church and Town Calendar
May 2025

- Saturday 3rd Church Market at St Thomas's - 10.30 till 12
- Sunday 4th 8.30am: Holy Communion (BCP) at Pett Level**
11am: Parish Eucharist at Winchelsea
- Tuesday 6th Mothers' Prayers - 10am
- Thursday 8th VE Day Anniversary Beacon Lighting - New Hall 7.30pm - Beacon 9.30
- Saturday 10th Friends of Winchelsea Church AGM - St Thomas's - 10.30am
- Sunday 11th 9.30am: Parish Eucharist at Icklesham**
11am: Parish Eucharist at Winchelsea
- Wednesday 14th Second Wednesday Society - New Hall - 2.30pm
- Friday 16th Literary Society - Court Hall - 7pm for 7.30
- Saturday 17th Coffee Morning and Talk - Wesley's Chapel - 10am to 12
Garden Society Talk - New Hall - 2.30pm
Winchelsea Arts Concert - St Thomas's - 7.30pm
Disco - W B Community Hall - 7.30pm
- Sunday 18th 9.30am: Parish Eucharist at Pett**
11am: Parish Eucharist at Winchelsea
Meeting to elect a Churchwarden - St Thomas's - 12.15pm
Sea Shanties for Demelza - New Inn - 6pm
- Friday 23rd Mayor's Reception - Court Hall - 5pm to 6.30
- Saturday 24th Beating the Bounds Walk - 2.15pm from Mill Road Stables
Film Night - New Hall - 6.30 for 7.30
- Sunday 25th 9.30am: Parish Eucharist at Icklesham**
11am: Parish Eucharist at Winchelsea
- Thursday 29th Garden Society Outing
- Friday 30th Fellowship Lunch - WB Community Hall - 12.30 for 1pm
IPC Annual Parish Meeting - New Hall - 7pm
- Saturday 31st Hospice Winchelsea Garden Opening
- Sun 1st June 8.30am: Holy Communion (BCP) at Pett Level**
11am: Parish Eucharist at Winchelsea
- Sat 7th June Church Market at St Thomas's - 10.30 till 12
Garden Society Rose Show during Church Market

Further ahead

- Sat 21st June New Hall ABBA Night
- Sat 5th July NGS Winchelsea Garden Opening
Winchelsea Arts Concert
- Sun 6th July St Thomas's Patronal Festival Service
Winchelsea Charity Garden Opening

Please send copy for the June Magazine
to ryeview@gmail.com
as soon as you have it to hand but, in any case,
before Friday 30th May

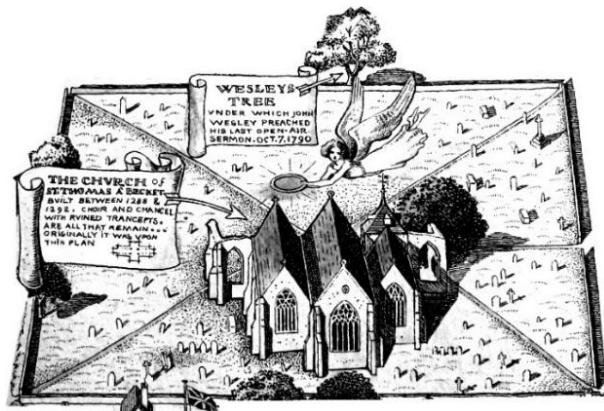


For Winchelsea Beach information go to winchelseabeachcommunityassociation.co.uk

For Winchelsea information go to winchelsea.com

For more information about the Church go to winchelsea-icklesham-churches.org.uk

For weekly news from the local area go to ryenews.org.uk



Parishes of Winchelsea Icklesham and Pett

The Revd Jonathan Meyer retired in February. During the vacancy, please contact the PCC Secretary, Mary Parker, with any enquiries about Baptisms, Weddings or Funerals. For all other matters, please contact the Churchwarden.

Churchwarden

Celia King
Stargazer, Morlais Place TN36 4LG
01797 227858 kingcelia54@gmail.com

PCC Secretary

Mary Parker
07927 107678 parkermary848@gmail.com

St Thomas' Primary School

Headteacher Dale Saxby
Friars Road TN36 4ED 01797 226479
office@st-thomas-winchelsea.e-sussex.sch.uk

Parish Magazine

Editor David Page
4 Kent Close TN36 4EX
01797 226524 ryeview@gmail.com