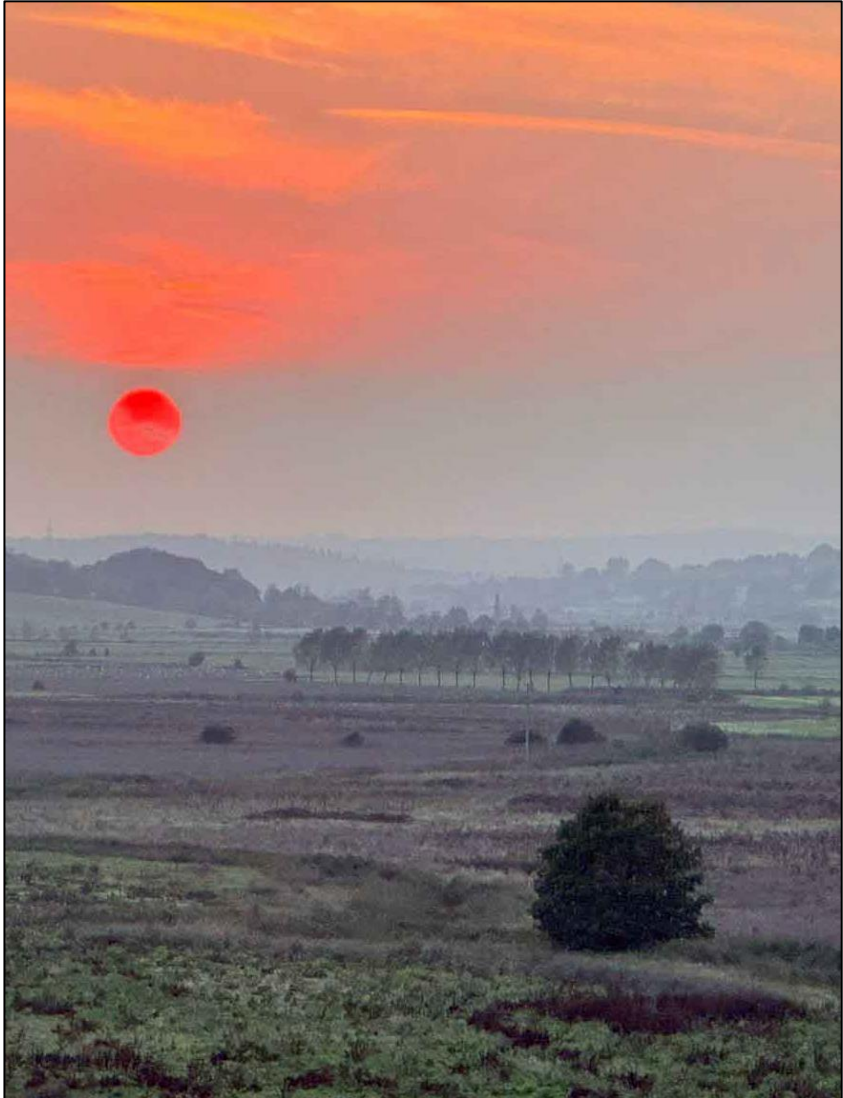


WINCHELSEA PARISH MAGAZINE

October 2024



Brede Valley Sunset *Laura Solomons*

ANOTHER GREAT COMMUNITY EVENT
ST. THOMAS'S CHURCH INVITES YOU TO

Harvest Festival



LIVE MUSIC FROM THE
CLIMAX CEILIDH BAND



OCTOBER 5TH 7PM

THE NEW HALL WINCHELSEA

Tickets £20 from Nigel Ashton



nashton364@gmail.com



Reflections from the Rectory

In the middle of last month I had the honour of being invited to the installations of the Dean of Chichester and the Dean of Lincoln. Installations of deans are not very frequent and to get two invitations on the same day was rather like the proverbial London bus; one waits in anticipation and then a whole string of them turn up. I haven't had any other installation invitations, though, as yet.

The former Archdeacon of Hastings, the Venerable Dr Edward Dowler, now Very Reverend was installed in Chichester. He is well known to many of us here and has been very supportive to me while Archdeacon of this area. (Why he has ceased to be Venerable and is now Very Reverend, is a mystery known only to those who understand the protocols of the Church of England.)

The new Dean of Lincoln is The Very Reverend Dr Simon Jones, who was formerly chaplain of Merton College Oxford is known to me because Merton College was the patron one of my Oxfordshire parishes. He was a great support, inviting us to dinner in college and the parish to services in Merton College chapel. After much reflection and the blessing of Edward Dowler we elected to go to Lincoln, on the strength that it is a wonderful cathedral that I had only visited once around 50 years ago. The service was uplifting in a majestic setting; Lincoln Cathedral has a simple grandeur and dominates the surrounding countryside. The music and

liturgy was worthy of the occasion. I am told the same was true of the service in Chichester. Our cathedral will celebrate its 950th anniversary next year.

It is sometimes thought that the bishop is in charge of his cathedral, but that is not the case. As *episcopus* he has the oversight of the diocese as his responsibility. The dean is essentially the vicar of the cathedral building; just as a parish priest has responsibility for his church, the dean is responsible for the mission and running of the cathedral and for representing the views of the clergy before the bishop.

I know the our new dean wants to try and reach out to the wider diocese too. Towards the end of September, one of his first initiatives was to bring the Cathedral choir to a service of Evensong at Saint Mary's Battle, which some of us attended. It is not always easy for us to focus our minds on Chichester as this diocese is long and thin and its mother church is situated on the western borders some distance from us, but we should remember that our parishes are prayed for in the cathedral and that we are always welcome. I hope we will be able to take something from the 950th celebration of the diocese.

Let us hold the new deans in this diocese and in Lincoln in our prayers and give thanks for all who contribute to the difficult task of leading and reaching out to rural parishes like ours and those in towns and cities in both affluent and deprived areas.

Jonathan

Bible Reading at the New Inn

Our informal Bible reading will continue for October on the 3rd - the first Thursday - at 6pm in the New Inn Winchelsea. We will continue to look at the Gospel according to St John. We have already looked at some of the early chapters of John's gospel and plan to consider chapters 18-19, the Passion. It is a very relaxed gathering and no prior knowledge is required: we always end around 7pm. There has been good attendance – look at it as Book Club with a difference. All welcome. Contact Jonathan for more details or with any questions, revdjonathan@btinternet.com 01797 226254



Ride and Stride Events

The sponsored walk and the attic sale held on 14th September to raise money for Sussex Historic Churches Trust were a great success. There were five walkers and a cyclist who signed in at St Nicholas Church at Pett Level then made their way back to St Thomas's.

During the afternoon, over seventy people browsed the stalls and enjoyed tea and homemade cakes. The energetic team effort by members of the congregation plus helpers from the town raised over £2,400 for the Trust; half will be returned to St Thomas's as a grant.



Pascal Rogé piano



Satie Ravel Debussy
Saturday 12th October at 7.30pm

Winchelsea Arts

St Thomas' Church Winchelsea
TN36 4EB



Tickets online at
winchelsea-arts.org.uk
and at the door

£24

free for under 18s



winchelsea-arts.org.uk

Pascal Rogé at Winchelsea Arts

Born in Paris, Pascal Rogé was a student of the Paris Conservatoire and was also mentored by Julius Katchen and the great Nadia Boulanger. Winner of Georges Enesco piano competition and 1st prize in the Marguerite Long Piano competition, he became an exclusive Decca recording artist at the age of seventeen.

His playing of Poulenc, Satie, Fauré, Saint-Saëns and especially Ravel and Debussy is characterized by its elegance, beauty and stylistically perfect phrasing.

Pascal Rogé has performed in almost every major concert hall in the world and with every major orchestra across the globe and has collaborated with the most distinguished conductors in history, including Lorin Maazel, Michael Tilson Thomas, Mariss Jansons, Charles Dutoit, Kurt Masur, Edo de Waart, Alan Gilbert, David Zinman, Marek Janowski, Sir Andrew Davis, Raymond Leppard and others.

One of the world's most distinguished recording artists, Pascal Rogé has won many prestigious awards, including two Gramophone Awards, a Grand Prix du Disque and an Edison Award for his interpretations of the Ravel and Saint-Saëns concerti along with the complete piano works of Ravel, Poulenc Debussy and Satie.

He is visiting professor at the Trinity Laban College of Music and Royal Academy of Music in London. He also gives regular masterclasses in France, Japan, United States and the UK.

[Click here to see the programme for this concert](#)

[Click here to see the full programme for the 24-25 Season](#)



Writing in Later Life

Keen to titillate his readers in the metropole with images from the fringes of the Empire, a Roman historian wrote, *There are among them composers of verses whom they call Bards* and, blow me, it turns out we actually have one of them here, in Winchelsea. Crouched in the corner of the Court Hall like a prize-fighter awaiting the first-round bell, Peter Davey scanned the faces of the LitSoc audience famously ever thirsting after novelty.

In the spirit of Cardinal Newman's advice on public speaking (Tell 'em what you're going to tell 'em) he disarmingly explained his interpretation of the talk's title as being writing in old age. He said that creativity is distilled from a lifetime's memory and experience and never dries up.

He drew inspiration from his late mother-in-law but wrong-footed that section of the audience that was primed for a torrent of Les Dawson jokes when he explained that this redoubtable centenarian's fecund intellect had produced reams of original writing and drawing.

He likened his approach to composing poetry to Auden's. Neither could refrain from making changes to the 'finished' work. Peter then read a series of his poems whose titles eschewed fussy allusion *Pied Wagtail on the Cricket Field* and the courtship ritual depicted in *Lapwing in Spring*

*The lapwing flaps and flutters, weaves and wavers,
this way, that way high on cloudborn wings.
to flip and dip and swerve
and almost brush the earth*

Peter's lyrical odyssey took the audience to Suffolk, the Berkshire Downs and an echo of an Oxfordshire childhood audible in *The Last Blenheim*. Writing was a two-way street endowing him with a growing humility which paradoxically advanced hand in hand with a greater confidence in his own voice and a progressive indifference to the opinions of others.

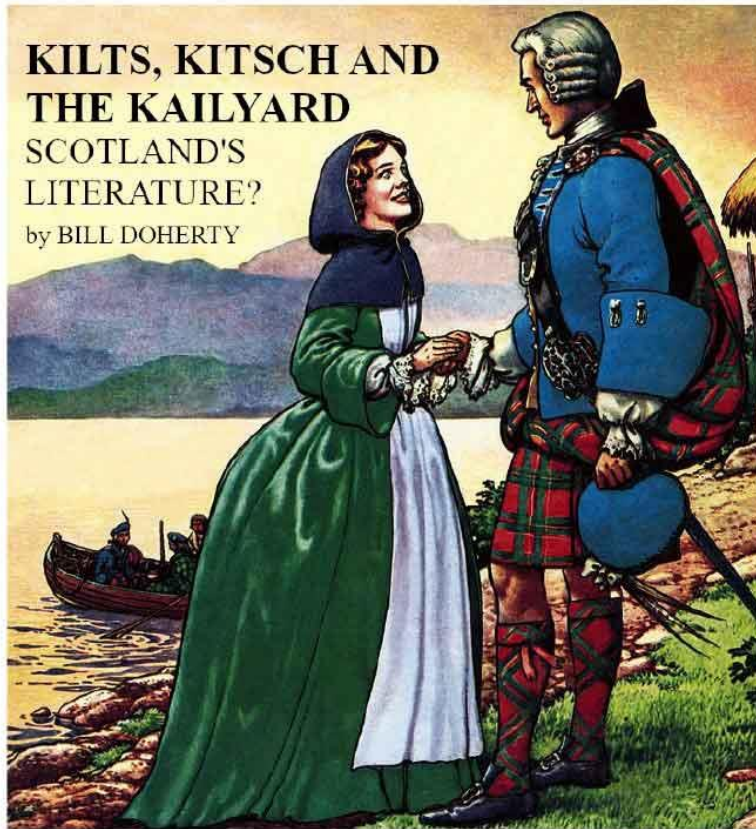
A consistent stylistic thread ran through the material presented, certainly terse and compact but at the same time complex, charged and able to seep into the soul; effects engineered by the poet's measured delivery and telling use of the pause. The audience might almost have anticipated his admission to being an aficionado of the Japanese haiku.

Drawing on Eliot's *Four Quartets* the audience was treated to an exposition on time; the idea of *rafts of time*, concepts of *time before and time after*, the *transition zone*, the elusive *still point in the turning world*, the circle of life bringing a return to the starting point, Closet Scottish Nationalists in the Court Hall might have shed a silent tear at this inversion of the Francophone Mary, Queen of Scots motto *En ma fin gît mon commencement*.

Although bards could deliver vituperative satire, the LitSoc audience quit the Court Hall buoyed by an evening which had given them an uplifting target of creativity in later life and the inspiration drawn from contemplative meditation on Nature.

Bill Doherty

Winchelsea Literary Society



**Friday 18th October 2024 at 7pm for
7.30pm**

Lower Court Hall, Winchelsea

(By kind permission of the Mayor)

Members free, non-members £5

literarysoc.winchelsea.secretary@gmail.com



Work on the Church building

As we move into autumn a number of important projects are happening at church and the PCC will keep the parish updated on these.

Maintenance of the roof

The entire roof is being checked for slipped tiles. Current estimates indicate that around 300 tiles need to be re-nailed but it could be many more.

Emptying gutters, down pipes and gulleys

This work is overdue but it will be made an annual event in future to ensure that these are maintained more consistently to avoid future large costs. Together, these works will cost £11,000 including VAT, but only 300 tiles are allowed for, so if 800 need to be re-nailed, the extra tiles and labour plus VAT will increase to £12,000.



North Sanctuary window and vestry roof

The window tracery here is being repaired. The stone is badly decayed and if not repaired soon the window is in danger of collapse. The cost will be £14,400 including VAT.

Lighting and Sound Project

Two scaffolding towers have been used in church to get access to the roof beams in preparation for the final plans for rewiring and relighting the church and providing new sound. The quote from Jenco, with VAT, is £1,700. A substantial part of the cost of the towers has been covered by a private donation.

A new lighting system has become a necessity because the bulbs and fittings we currently have are now obsolete and are no longer being made. As scaffolding is a large part of the expense, it makes sense to deal with the sound system and its high-level wiring at the same time.

If you would like any more details on the work please contact Nigel Ashton nashton364@gmail.com



WINCHELSEA FILM NIGHT

In association with Winchelsea New Hall Committee

MOULIN ROUGE



Baz Luhrmann's
2001 Jukebox musical
romantic drama film
set in the

Moulin Rouge, Paris.

Starring

Nicole Kidman, Ewan McGregor,

and

Jim Broadbent.

SATURDAY 19th OCTOBER 6.30 for 7.30 SCREENING

Admission Free

Refreshments, Pay Bar.

Come early, enjoy a drink or two.



Pressing Matters

Printmaking and Prints

Shirley and Jonathan Meyer join forces to give this month's Second Wednesday talk.

In a previous life, Jonathan was a print expert at Sotheby's. He will be talking about historical aspects of printmaking, the variety of techniques and some of his finds during his career with Sotheby's.

Shirley will be talking about why print making appeals to her both as a teacher and a practitioner and will demonstrate linocutting. Shirley will have cards and prints available for purchase.

9th October at 2.30pm in the New Hall

All are welcome. Raffle

Annual membership £15. Visitors £5. Homemade tea £2

2ndWeds@gmail.com



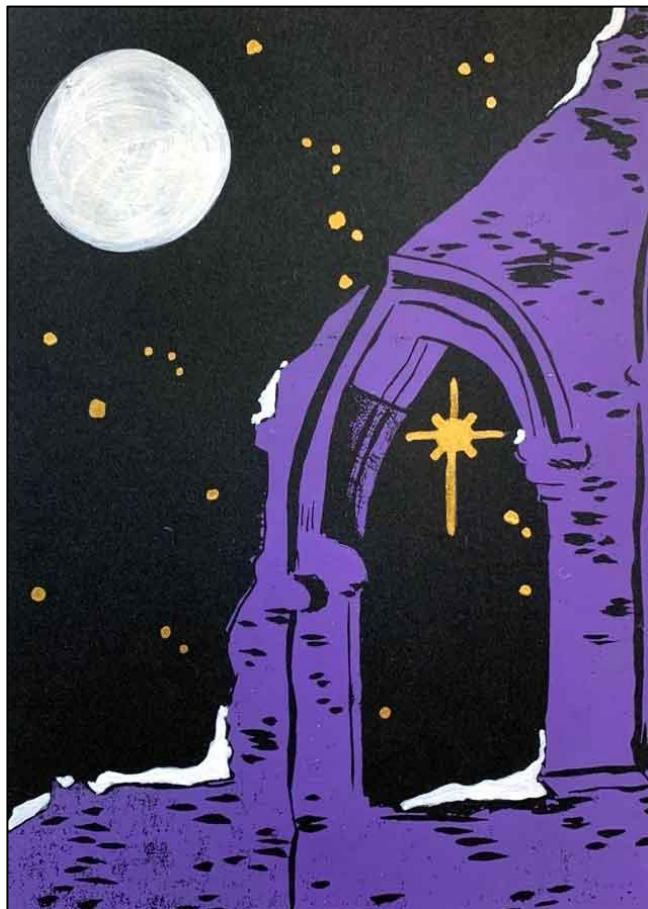
Fabulous Fundraising for St. Thomas's

We are very lucky that Winchelsea's new resident artists, Paul Evans and Suzanne Ludlow, have donated a number of copies of their beautiful 2025 calendar to St Thomas's to help raise funds. These are now on sale and can be ordered and collected from Shirley Meyer. She will have some for sale at the October Church Market too.

Twelve absolutely beautiful paintings depicting local scenes. What is not evident is the extremely high quality heavyweight paper onto which they are printed. Retailing at £20 they are well worth every penny.

They make a wonderful visual record of Winchelsea and would also make wonderful Christmas presents.

Please get in touch with Shirley if you are interested shirleymeyer@btinternet.com.



Winchelsea Christmas Card

A linocut design by Shirley Meyer depicting a winter moon and stars with the 'Eastern Star' peeping through one of the Church arches. The cards are A6 size.

They will be available for £2 each or in packs of 5 for £8.50 with 20% of all profits over the Christmas period going to St Thomas's Church. Please order from Deborah Rodley debbo14@hotmail.com or directly from Shirley shirleymeyer@btinternet.com

You will also be able to buy or order them at Church Market on the first Saturday of each month and at the Winchelsea Christmas Fair on 15th November.



Year 4 and 5 pupils from St Thomas's School enjoy a visit to the church early in the new term.



Winchelsea Beach in October

Mothers' Prayers

on Tuesday 1st at *Solstice*, Sea Road at 10am.

First Wednesday Coffee Morning

2nd October and then on the first Wednesday of every month in Winchelsea Beach Community Hall.

10am until 12. Coffee, tea, biscuits and cake £1 per item.

Meet your friends and make new ones.

Entrance free All welcome.

Fellowship Lunch

in Winchelsea Beach Community Hall on Friday 25th at 12.30 for 1pm All are welcome. Please contact Mary Parker if you intend to come - 07927 107678

WINCHELSEA BEACH COMMUNITY ASSOCIATION

REGISTERED CHARITY NO. 278165

AUTUMN DANCE

WITH

"Something Else"

AND

**FISH AND CHIP
SUPPER**



SATURDAY 19TH OCTOBER

7.30 TO 10.30 PM

IN

WINCHELSEA BEACH COMMUNITY HALL

TICKETS £20.00 EACH

**AVAILABLE FROM
MARY**

07927 107678

**BRING YOUR OWN DRINKS AND
GLASSES**



Also a Barn Dance on 9th November at WB Community Hall. Tickets £15 (including sausage and mash supper) will be available from Mary later in October.

Icklesham Parish Council

Future Meetings

14th October – 6.15pm – Planning Meeting followed by Allotment Committee Meeting at Winchelsea Court Hall.
28th October – 6.15pm Planning Meeting followed by Full Council Meeting and Budget Meeting at Rye Harbour Hall.
The Agendas are published on the Parish Council's website and noticeboards the week prior to the meetings.

Grants At the Full Council meeting held on 11th September, the Council were pleased to awarded grants of

- £2,500 to Rye and District Community Transport towards the running costs of the Dial-a-Ride service.
- £600 to All Saints and St Nicolas Church in Icklesham towards the maintenance costs of the churchyard.
- £1,500 to the Winchelsea Corporation towards the refurbishment of the Court Hall toilets.
- £1,702.50 to Winchelsea New Hall towards the running costs of the New Hall.

Adult Exercise Equipment

The Parish Council obtained match-funding from Rother District Council last year to install two adult arm and pedal bikes in each ward. So far these have been installed in Winchelsea Beach, Icklesham and Rye Harbour. However the bikes for Jubilee Field in Winchelsea have been delayed by Historic England requesting a written scheme of investigation before they will grant consent. The Hastings Area Archaeological Research Group have been contacted to assist so we will keep residents updated.

Antisocial Behaviour The Parish Council have received reports of graffiti in and around Winchelsea. The Parish Council urge residents to be vigilant and to report any anti-social behaviour to Sussex Police.

Anne Guncarriage Fundraising

Following our Annual Meeting where there was a talk about the Winchelsea Museum, our Chair, Cllr Mrs Stanford raised a potential project to build a gun carriage for the Warship *Anne* gun that is displayed at the Museum. At a meeting held on 12th August, the Parish Council agreed to front the Project which will cost approximately £6,500. This will include restoration work and repair of the gun. The Parish Council agreed to kick-start the project by donating £500

and have set up a GoFundMe page to raise the balance of the funds: <https://gofund.me/56708ec2> You can also donate online direct to IPC account no 01966791 sort code 30-90-28 (it is important to use the reference 'Anne' in your transaction) or send a cheque to PO Box 148 Winchelsea, TN31 9FP made payable to 'Icklesham Parish Council' with 'Anne' written on the reverse



There will be a talk at St. Thomas's Church on Saturday 7th December at 7pm on the history of the Warship *Anne* which was one of 30 ships commissioned by Charles II. She was dis-masted during the Battle of Beachy Head in 1690, towed up the Channel and run aground at Pett Level then burned to stop the French fleet capturing her.

We have two eminent historians delivering talks that evening, Richard Ensor, a author and nautical historian for the *Anne* and his friend, J D Davis, also an author and historian – so two for the price of one. Tickets will be available soon – watch our Notice Boards for further details. All proceeds will go towards the *Anne* project.

IPC are here to represent you and welcome your views on any matter. Please send your views and requests to clerk@icklesham-pc.gov.uk or write to PO Box 148, Winchelsea, TN31 9FP 07714 169901.

WINCHELSEA RESIDENTS' ASSOCIATION



WINCHELSEA RESIDENTS' ASSOCIATION

Are holding their Annual General Meeting

WINCHELSEA NEW HALL

SATURDAY 26th OCTOBER at 11am - 12.30

(REFRESHMENTS AVAILABLE)

*We hope you can join us. For further information -
Email; RA@winchelsea.com / Website; Winchelsea.com/RA*



RA@winchelsea.com

winchelsea.com/RA



Ore Tunnel Closure

19th October to 3rd November

It is ten years since tunnel closures last occurred on the Marshlink railway line between Ashford and Eastbourne, causing difficulties for schoolchildren and other rail passengers alike. This time, by working for many months and interfacing with Southern through various more major rail groups including our diminutive THWART (Three Oaks and Winchelsea Action for Rail Transport), we have had much more timely warning of the actual closure of the Marshlink for our local communities.

Not every detail of the replacement bus services are available yet, but for the first time a minibus will get into Three Oaks by the pub to take people at least to Hastings. This is a major achievement. Before this agreement, children and adults would have had to walk to the A259 along a dangerous, unlit minor road, to catch the rail replacement bus, or indeed any bus for that matter. Importantly for future closures, Southern have now agreed to continue to provide this minibus service into Three Oaks. We are indebted to them for this.

The second improvement is that there will be a Rye-Ashford shuttle for 12 hours during the day. For operational reasons, as I understand it, this service cannot be absolutely guaranteed. More information will become available soon so please watch the National Rail websites and our noticeboards. *John Spencer*

Network Rail information: networkrail.co.uk

WINCHELSEA CONSERVATION SOCIETY

6 Core Principles of REGENERATIVE AGRICULTURE



Want To Know More About Modern Agriculture?

Meet

Professor Allan Buckwell

Emeritus Professor of Agricultural Economics

“How securely and well-fed are we *really*?”

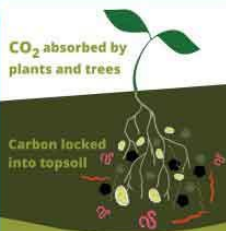
A Talk At The Lower Court Hall

10.00 am on Saturday 12th October 2024

£5 Entry (Free to WCS Members), or join for £5



**New
Common
Agricultural
Policy**





Lost and Found

Signs like this, which you can still see as you enter Rye, used also to sit on the main roads into Winchelsea. Mysteriously they disappeared.

This one has just come to light in the garden at *Martens* in St Thomas's Street, next door to *Firebrand*. *Martens* has remained unoccupied for many years. The overgrown garden is finally being cleared and, during the clearing, this appeared.

There's probably another one somewhere and perhaps they can be re-instated in due course.



Court Hall Cellar

Removing plants from the bottom of the Court Hall gable wall to make way for scaffolding has revealed the entrance to the cellar, which was known to be under the building but has long been full of rubble and remains inaccessible.

The scaffolding is now in place and restoration works are going ahead. The plants have been stored and the garden will be reinstated at the end of the process.

**Winchelsea Garden
Society**

Outing to the

**Royal Botanic
Gardens**

Kew

**Wednesday
6 November**

Coach departs at 9:00 am from
German Street. Return to
Winchelsea around 5:30 pm.

Inclusive price for members covers
travel and entry to the gardens.

£30

Places are limited to 33 people.
To guarantee your place, please
book and pay Judith Payne by
cash or cheque at Castle Cottage,
Castle Street, Winchelsea
TN36 4EL

For further information please
contact Shirley Meyer on
shirleymeyer@btinternet.com



shirleymeyer@btinternet.com



Eyed Hawk Moth

Winchelsea Wildlife Moth Group

For those of you that have not heard about us, we are a small group of people who have been together for three years now. During the months of May to September we visit your gardens by arrangement with our moth trap and identify what species are flying and how numbers are holding up. Moths are important pollinators and not just the consumers of woolly jumpers. We'd like to share with you some of the most spectacular visitors.



Black Arches



Privet Hawk Moth



Scorched Wing



Swallow Prominent



Garden Tiger



Buff Tip



Angle Shades

CHARITY PUB QUIZ



Sunday 3rd November 2024

Winchelsea New Inn

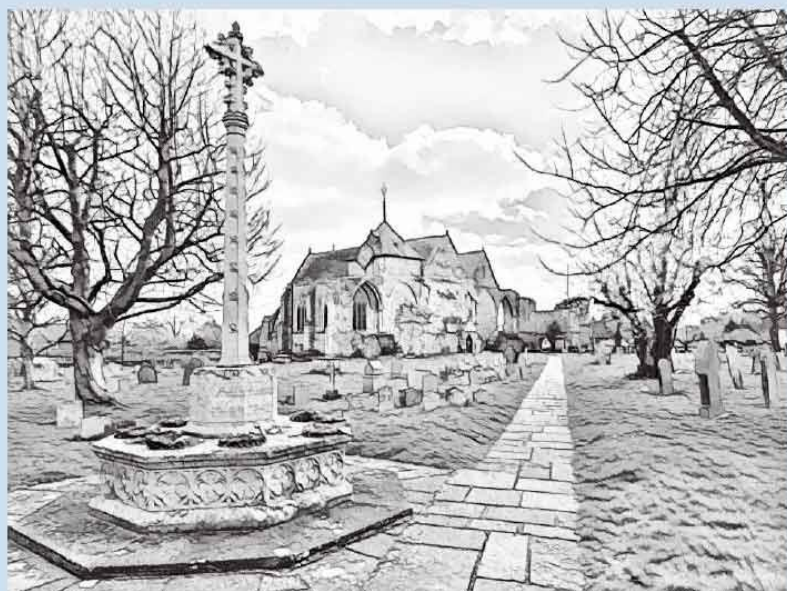
6:30 pm for 7 pm start

Teams & Cost

Max 6 people per table

£20 PER TABLE

(pay at the New Inn beforehand)





Poppy Appeal 2024

This year's Poppy Appeal will run from Thursday 24th October to Monday 11th November.

Our usual supporters in Winchelsea and Winchelsea Beach have again agreed to host donation tins and trays containing poppies and pins. These will be available from the start of the Appeal at The Little Shop, The New Inn, Winchelsea Lodge, the Co-op, Sutton's Shop, The Ship Inn/Jamie's Butchers, Winchelsea Sands and the School. Purchases can also be made directly and on-line via poppysshop.org.uk.

As ever, donations will be gratefully accepted by the Royal British Legion (RBL) with gift aid being much appreciated. Donations can also be made electronically to the RBL Poppy Appeal, Sort Code 30-11-75, Account Number 01937121 at any time. It would be appreciated if the payment reference SFF24 could be used, for any donations made during the Appeal period, as that will credit the gift to the Winchelsea area. However, this is not essential.

It is planned that a stock of gift aid envelopes will be available at the back of the Church for cash or cheques (made payable to RBL Poppy Appeal) and these should be placed in the Black Box in the Church, or in any box at the above locations, on or before 11th November.

In addition, inspired by Jerry Moss, the New Inn will host a Quiz Night on Sunday 3rd November, with proceeds going to the Appeal. It will be great if this new initiative is supported. Please see the notice in this magazine. In another first, Jerry also has a SumUp machine enabling us to trial on-line donations and it is intended to make use of this during the Appeal period.

Finally, if you have any difficulty in getting hold of any remembrance material you need, in making a donation, or have any questions about this year's appeal, please call John Rodley on 01797 223458.

New Hall AGM

The New Hall AGM will take place on Wednesday 30th October from 4 until 5pm in the New Hall. Please come along and hear our plans and the progress of the finances. This is a great opportunity to put your views to the committee and help us set our future objectives.



The 100 Club draw in September was drawn by Birdy Johnson with 50 being the winning number. Thanks for your continuing support with this New Hall fundraiser.



WINCHELSEA CHRISTMAS WINDOWS

2024

**Please join us this year to light up
your window and bring the
community together over the
Christmas period by adding a
little festive light to the town.**

**Theme; Christmas Carols, Christmas
Songs or Christmas Classical Music.**

**Saturday 14th December to 31st
December from 4,30 to 9pm**

For more information email -

deborahmbeverley@btinternet.com

or call Debbie Cosstick on (01797) 229087

Winchelsea Christmas Windows 2024

We apologise that summer is barely over and we are talking about the 'C' word but it will soon be upon us and the Christmas Windows team has already met.

The theme for 2024 will be Christmas Carols, Christmas songs or Christmas classical music. We know what a creative community you are and we would love as many residents as possible to create a Christmas window display. We are planning for all participating windows to be lit from 4.30pm to 9pm on Saturday 14th December and every day at these times until 31st December.

All participating properties will be allocated a number which will be plotted on the 'Town Trail'. The trail will be available to purchase for £1 and all profits raised will be donated to Demelza Children's Charity.



Winchelsea has a wonderful history of creating some lovely windows as you can see in the accompanying photographs. For further information, please contact deborahmbeverley@btinternet.com or speak to any of the team: Shirley Meyer, Lyn Davidson or Richard Plumb and we can provide further details.

There will be posters around town and a further update in the November issue of the Parish magazine. Thank you for your support.



**SATURDAY
16TH
NOVEMBER**
10.30AM TO 3PM



WINCHELSEA CHRISTMAS FAIR

**GRAND RAFFLE, TOMBOLA,
REFRESHMENTS**

**LOCAL ARTISANS - JEWELLERY, FINE
ART, PRINTS, CARDS, BASKETS,
TEXTILES, CANDLES, CERAMICS,
WINE, WOODTURNERY, CAKES AND
PRESERVES, WALKING STICKS,
CHOCOLATE, CHEESES, DELI AND
MORE**



**ENTRY £1, UNDER
16'S FREE**

**WINCHELSEA NEW HALL
TN36 4AA**

REGISTERED CHARITY NO. 235174

Winchelsea Christmas Fair

will be held on Saturday 16th November from 10.30am to 3pm In the New Hall.

This year we have lots of new stallholders as well as some familiar faces attending the Fair so be sure to come and start your Christmas shopping early on 16th and support local craftspeople, artists and artisan food producers.

Stallholders this year at the Fair will be selling their baskets, jewellery, candles, woodturnery and walking sticks, ceramics, art prints and cards, textiles and embroidery as well as bulbs and knitted items. For sale on the food front there will be wine, chocolate, preserves, cakes and artisan cheese, all locally produced.

There will be refreshments, an adult and a children's Tombola, and another wonderful Grand Raffle. Proceeds for the Raffle will be split 50/50 between the New Hall and a local charity.

Our Tombolas will focus on 'Christmas Treats'. If you are able to help with a small donation that would be very much appreciated; wine, chocolates, sweets and anything just a bit Christmassy or something that would make a lovely Christmas gift would be great.

John and Sue McGeown are happy to collect any donations or you could drop off at 1 Hiham Green.

johnhmcgeown@gmail.com 07796 272720
suejmcgeown@gmail.com 07766 915111

Winchelsea
Garden Society

Mig Kimpton

Preparing for a Floral Christmas

The creative designer
returns to show us how to
make beautiful Christmas
decorations using plants

The New Hall Winchelsea
2:30 pm Saturday
9 November 2024

Admission **£5** including a
raffle ticket

Floral arrangements will be
awarded to 3 winning raffle
ticket holders





Winchelsea Cricket Club

Just as a soggy bottom is unwanted when baking, a soggy wicket is unwanted on the cricket field. September's rain killed off the Winchelsea season, with just one match possible. In a hastily arranged fixture, Winchelsea travelled to Battle for the first time in years. Our hosts won an entertaining game, but more importantly, new bonds were formed and we're hopeful that this could become a regular fixture in the coming years.

The club pavilion came under attack again in September, this time to vandalism. Thank you to whoever alerted the local WhatsApp group about this; thanks to you we were able to sort it out relatively quickly. In the immediate aftermath of the fete somebody tried to break-in to the pavilion. Presumably they thought there would be lots of post-fete swag to be had. In reality, there's little more than some old stumps and an abandoned jock-strap, but there's no accounting for taste. These two events serve as a reminder to all of us all to secure outbuildings etc. and to keep an eye on the more vulnerable areas of town.

WCC will return to the fray next summer.
Thank you for your support.

Mike Stoneham



Rye Food Bank

Cam is now up and running again and will be making the next doorstep food collection round the town on Tuesday 22nd October. *Donald Cameron-Clarke* 01797 226414

You can also take contributions directly to the food bank on any Wednesday morning before 11.30. Rye Food Bank is located at the Baptist Church in Cinque Ports Street and has its own car park to the rear of the building. Jempson's in Rye also has a collection point for donations within the store.

Financial donations are also much appreciated.

You can find further details about Rye Food Bank and how to make a donation at ryefoodbank.com





St Michael's Hospice Consultation

St Michael's Hospice invites you to help shape the future of the new hospice building. Since their initial announcement in March, they have been busy seeking advice from heritage and planning experts to find out what may or may not be possible on the current site whilst reviewing other potential locations. This process of research and due diligence will help determine where the new hospice will be located. In the meantime, the Hospice is gathering ideas to help shape the design brief of the new building and would love to hear from you.

Feedback to date highlights the importance of space for families, easy access to a garden, and natural views. A member of the community said: "When my dad was in the hospice, he loved looking out at the flowers and birds. It was important for him to still feel the outside world. A garden space is important."

If you want to share your ideas or if you'd like the Hospice to come and talk to your community group, please contact futurehospice@stmichaelsospice.com.

stmichaelsospice.com/our_future_hospice

What's On Weekly At Winchelsea New Hall

Mondays 09.30-10.15	Pilates with Hannah	Suitable for all. Contact Hannah on 07936 151529 or email hannahpilateshastings@gmail.com
Mondays 15.00-15.50	Zumba Gold	Suitable for all. Contact Daisy at fitnessbythesea@outlook.com
Mondays 16.00-17.00	Pilates with Celia	Suitable for all ages and abilities. Contact Celia on kingcelia54@gmail.com
Tuesdays 10.00-11.00	Yoga with Natasha	Suitable for everyone from beginners to experienced. Contact Natasha on 07946 399211 or email nn@natashanandiniyogini.com
Tuesdays 14.00-15.30	Tune In Winchelsea	Fun singing group run by local tenor Gary Marriot. All ages and abilities welcome. Contact Rosemarie on 07941 458628 or email rosiero96@icloud.com
Wednesdays 18.30-19.30	Strength and weights	Contact Rachel at rotherfitnessgroup@outlook.com New class starts 21st October
Wednesdays 19.30-20.30	Boot Camp	Contact Rachel at rotherfitnessgroup@outlook.com
Thursdays 09.30-10.30	Scottish Dancing	A fun, friendly class, suitable for beginners. Contact maddycoelho@hotmail.com
Thursdays 18.00-19.00	HIIT	Contact Rachel rotherfitnessgroup@outlook.com New class starts 21st October
Fridays 09.30-10.15	Pilates with Hannah	All welcome. Contact Hannah on 07936 151529 or email hannahpilateshastings@gmail.com
Fridays 10.45-11.45	Strictly Fitsteps	Fun exercise class. Learn the dances on 'Strictly' without a partner. Contact Amanda on 07768 095184 or at amanda@beacroft.net

*An informal table tennis group often plays on Thursdays -
contact Jane at janearchutowska@yahoo.co.uk

**The hall has table tennis and badminton equipment and can be booked on an ad hoc
basis for £2 per person per hour (£1 for under 16's) – contact Rosemarie on 07941
458628 or at rosiero96@icloud.com for details

Winchelsea Church and Town Calendar

October 2024

Tuesday 1st	Mothers' Prayers - 10am
Thursday 3rd	Bible Reading - New Inn - 6pm
Friday 4th	Wine Society - New Hall - 6.30pm
Saturday 5th	Church Market at St Thomas's - 10.30 till 12 Harvest Supper - New Hall - 7pm
Sunday 6th	8am: BCP Holy Communion at Winchelsea 9.30am: Harvest Festival Eucharist at Pett 11am: Harvest Festival Eucharist at Winchelsea
Wednesday 9th	Second Wednesday Society - New Hall - 2.30pm
Saturday 12th	Conservation Society Talk - Court Hall - 10am Winchelsea Arts Concert - St Thomas's - 7.30pm
Sunday 13th	8.30am: BCP Holy Communion at Pett Level 9.30am: Harvest Festival Eucharist at Icklesham 11am: Parish Eucharist at Winchelsea
Friday 18th	Literary Society - Court Hall - 7pm for 7.30
Saturday 19th	Film Night - New Hall - 6.30 for 7.30pm Autumn Dance - WB Community Hall - 7.30pm
Sunday 20th	9.30am: Parish Eucharist at Pett 11am: Parish Eucharist at Winchelsea
Friday 25th	Fellowship Lunch - WB Community Hall - 12.30 for 1pm Fall of the House of Usher performances
Saturday 26th	Fall of the House of Usher performances Residents Association AGM - New Hall - 11am
Sunday 27th	<i>Clocks go back</i> 9.30am: Parish Eucharist at Icklesham 11am: Parish Eucharist at Winchelsea
Wednesday 30th	New Hall AGM - 4 till 5pm
Sat 2nd Nov	Church Market at St Thomas's - 10.30 till 12
Sun 3rd Nov	8am: BCP Holy Communion at Winchelsea <i>All Saints</i> 9.30am: Parish Eucharist at Pett 11am: Parish Eucharist at Winchelsea 4.30pm: Service of Thanksgiving for the Departed Charity Quiz for Royal British Legion - New Inn - 6.30 for 7pm
Weds 6th Nov	Garden Society visit to Kew
Sat 9th Nov	Garden Society Talk - New Hall - 2.30pm

Further ahead

Sun 10th Nov	Remembrance Sunday
Sat 16th Nov	Christmas Fair
Sat 23rd Nov	Murder Mystery Evening



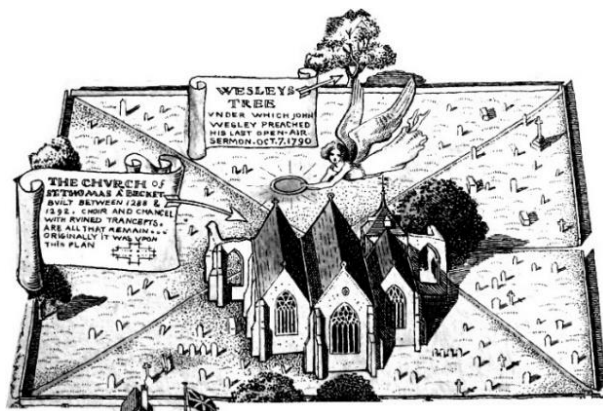
**Please send copy for the November Magazine to
ryeview@gmail.com
before Wednesday 30th October**

For Winchelsea Beach information go to
winchelseabeachcommunityassociation.co.uk

For Winchelsea information go to
winchelsea.com

For more information about the Church go to
winchelsea-icklesham-churches.org.uk

For weekly news from the local area go to
ryenews.org.uk



Rector of Winchelsea and Icklesham and Priest in Charge of Pett

The Revd Jonathan Meyer
 The Rectory, St Thomas Street, Winchelsea TN36 4EB
 01797 226254 revdjonathan@btinternet.com
 The Rector's day off is Monday

Churchwardens

Celia King
 Stargazer, Morlais Place TN36 4LG
 01797 227858 kingcelia54@gmail.com

Nigel Ashton
 Winchelsea Cottage, High Street TN36 4EA
 01797 222023 nigelmarkashton@gmail.com

St Thomas' Primary School

Headteacher Dale Saxby
 Friars Road TN36 4ED 01797 226479
office@st-thomas-winchelsea.e-sussex.sch.uk

Friends of Winchelsea Church

Chairman Ben Chishick
 Tower Cottage, Barrack Square TN36 4EA
 01797 226653 towercottage@btinternet.com

Parish Magazine

Editor David Page
 4 Kent Close TN36 4EX
 01797 226524 ryeview@gmail.com