

WINCHELSEA PARISH MAGAZINE

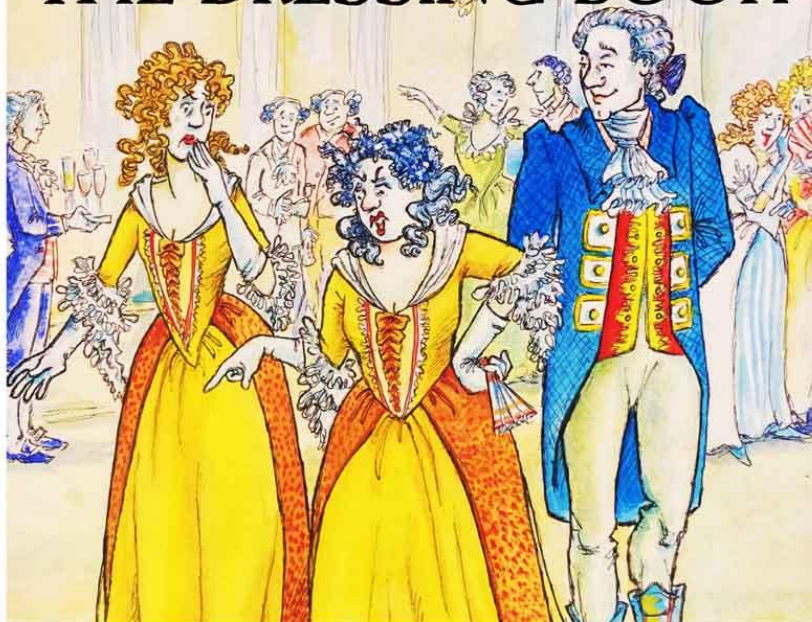
August 2024



The Rude Mechanical Theatre Company

Present

THE DRESSING BOOK



St Thomas' Primary School Field, Friars Road,
Winchelsea, East Sussex, TN36 4ED

Thursday 1st August - 7:30pm

'SUPERBLY DONE' - THE STAGE 'A DELIGHT' - INDEPENDENT ON SUNDAY '
SUCH A GOOD NIGHT! - THE TIMES

National Press On The Rudes

www.therudes.co.uk



therudes.co.uk



Reflections from the Rectory

August sometimes seems to be a rather flat time of year. In Winchelsea the swifts will depart early in the month and we will wait once again for their return in 2025. It seems that this year there have been a good number. Many of us hope that with the increased numbers of people being aware of the importance of biodiversity and leaving small areas of grass uncut as well as the National Trust's recent policy to leave more land ungrazed will increase insect life. Our churchyard circles play their own small part.

It isn't just the departure of the swifts that mark this time of year. Although I wasn't able to be here the school celebrated their leavers' service in the middle of July. Not only will the year sixes be moving on but the present head Carol Gardiner is retiring and Dale Saxby, with a full support of the governing body, will take over as head in September.

The church has been building good links with the school and I pray that these may continue to develop. We have made every effort to engage them in the life of the churchyard and there have been several visits to see the wildflower circles.

Nigel Ashton our churchwarden has organised a number of visits for the children and plans more for the future. The children were fascinated to engage with the wonderful display commemorating the martyrdom of our Patron Saint Thomas Becket. Blood, swords and bones are a continual fascination for the young. I continue to visit the school once a week during term time and we are beginning to establish the *Open the Book* storytelling which is proving to be popular.

I remember being captivated in my early years by stories from the Bible. In those days they were well told by David Kossoff and many of the characters were in bedded in my imagination. The *Open the Book* team dress up to tell simple stories and act them out in a simple way. So far we have covered part of the Genesis cycle which telling of Jacob and his brother Esau and the stolen birthright amongst other tales. Next term we hope to do Jacob's ladder and children from the school will be for angels ascending and descending, bringing heaven to earth and earth to heaven. Anyone who wishes to volunteer is most welcome to join us. It is not arduous and is proving to be very rewarding.

I'm also pleased to report that Tim Jury, a local farmer whose land borders the Parishes of Pett and Guestling has been into the school to talk about his work for a charity called *Farm Africa*. *Farm Africa* focuses on teaching and enabling agriculture to take place in difficult parts of the world rather than just supplying food and money; allowing subsistence farmers to provide for themselves in a sustainable way. It is Tim who has brought the two donkeys Alice and Rosie to help with our Crib Service for the last two years in Winchelsea and we hope they will come again.

While we do not have large numbers of families in church these links and threads are a hugely important part of our ministry in Winchelsea and we can never know what sparks of interest and spiritual enquiry we may kindle in the children. As we enter the dog days of August, I pray that we may be reinvigorated for this autumn and find our own ways of bringing heaven to earth and earth to heaven.

Bible Reading in the New Inn Winchelsea

Our informal Bible reading will continue for September on the 5th of the month - the first Thursday - at 6pm in the New Inn Winchelsea. We will continue to look at the Gospel according to St John. We have already looked at some of the early chapters of John's gospel and plan to consider chapter 11, the Raising of Lazarus. It is a very relaxed gathering and no prior knowledge is required: we always end around 7:00pm. There has been good attendance; look at it as Book Club with a difference. All welcome. Contact Jonathan for more details or with any questions, 01797 226254 revdjonathan@btinternet.com



WINCHELSEA SUMMER FETE



SATURDAY AUGUST 10TH

12 NOON - 4 PM

WINCHELSEA CRICKET FIELD
ADMISSION FREE



Winchelsea New Hall

As part of our toilet refurbishment, we have now installed baby changing facilities in the accessible toilet at the front of the hall. This will be great for our weddings and of course for all residents with children (or more likely grandchildren) who use the hall.

Summer Fete Lunches

Pre-order your lunch for the Fete on Saturday 10th August and help raise funds for the New Hall. As most of you will know the Cricket Club is running the fete again this year. However, we will still be providing teas in the afternoon as in the past. This year it will be slightly different as we will be serving cream teas (scones, jam and cream) and so will not be asking you to make us a cake.

This year, for the second time, we will be also be providing light lunches from 12 till 2pm. The choice is either:
Cheese Ploughman's – French baguette, cheddar and blue cheese with salad garnish and pickle, or
Quiche and salad with fresh French bread and butter
(both choices will be vegetarian)
Price is £6.50 to include a hot or cold drink.

It will help us enormously with our catering and planning if you let us know in advance if you would like to have lunch. Please email Ali Casey to pre-order ali.casey63@gmail.com.

We still need some helpers on the day to serve lunches and teas. If you could help just for an hour that would be great. Please contact Rosemarie Roberts rroberts96@yahoo.co.uk



100 Club

The winner of the 100 Club prize in July is number 14, Congratulations! The £100 should be in your bank account by now. Enjoy!

*Rob, Graham, Sergio, Mary, Rosemarie and Ali
New Hall Management Committee*



**ST THOMAS' PRIMARY
SCHOOL WINCHELSEA PTA**

Winchelsea Summer Fair Tombola

A REQUEST FOR DONATIONS OF TOMBOLA PRIZES

HERE ARE SOME IDEAS

- Bottle of Wine, Champagne or Soft Drinks
- Chocolates or Sweets
- Small Gift Items: Candles, Books, Toys or Stationery
- Vouchers: Gift Vouchers for a local business or Experience

**PLEASE DROP OFF ANY DONATIONS
BEFORE AUGUST 7TH TO:**

4 Hiham Green, Winchelsea

**If you are unable to drop off your donations we
can collect, please contact us on 229406**



FOAM News

With the fete only a few days away, can I remind everyone that we need a bottle or two of your best plonk for the FOAM bottle stall. (We are hoping for better weather this year)

Our bottle stall is always a lot of fun and usually raises a tidy sum, which we can put to good use, with the forthcoming repairs to the Court Hall and weed clearance on all three gates, planned for the autumn. If you can donate some bottles, please drop them off at either Ali and Chris at *Wren Cottage* or Phil and Ian at *Lines End*. Don't forget to come and say hello at our stall; you may even win your bottle back.

The fete is on Saturday 10th August. Also in August are two guided walks by our Mayor to raise money for FOAM. There are a few tickets left, so if you fancy a stroll around town with Peter, you can book on ticketsource.co.uk/foam

For those who like to plan ahead, FOAM Carols in the Lower Court Hall is on Friday evening, 20th December, and our famous FOAM quiz is on Saturday 22nd February.

And look out for our article in this magazine about our next fund-raising event in October, *'The Fall of the House of Usher'*, if you would like to join our team of volunteer helpers, Phil Mack would love to hear from you.
phil@linesend.org.uk

Chris Chappell and the FOAM Committee

Help us raise money to maintain the town's ancient buildings.





Winchelsea Cricket Club

Are you sitting down? I ask because you'll be shocked to hear that WCC, after a 14 month wait, has learned how to win again. Not just once, but twice. An overly confident Crowhurst team came up against bang-in-form batters Will Wheeler and Jon Peters who shared a partnership of 140 for Winchelsea, guiding us to victory.

The following Sunday, away at Wittersham (whose outfield was unfortunately cursed by dog) saw an impressive all-round team performance that crafted an easy 32 run victory. Special mention must be made of young James Archer, whose mature fast bowling belies his 15/16 years of age (I'm not sure exactly - he's a lot younger and better than me, anyway). *Mike Stoneham*

August Fixtures

Aug 4th - home v Northiam - 2pm start
Aug 11th - away v Ashburnham - 2pm start
Aug 18th - away v Beckley - 2pm start



WINCHELSEA FILM NIGHT

In conjunction with Winchelsea New Hall

Kes, a 1969 British coming-of-age drama film

Directed by Ken Loach

KES



produced by Tony Garnett,
based on the 1968 novel
A Kestrel for a Knave

SATURDAY 17th AUGUST 6.30 for 7.30 SCREENING

Admission Free

Refreshments, Pay Bar.

Come early, enjoy a drink or two.



News from the Mayor

At the time of writing, hopefully a late summer has arrived.

Icklesham Parish Council

Jenner Sands, IPC Town Clerk, and I ‘walked’ the town in June to identify, a number of areas that require attention. Here are just few areas that have been achieved or in the pipeline:

- Cutting back overgrown vegetation around the Pipewell Gate, and the viewing point in North Street. Spraying weeds growing in the kerbs and pavements around the town.
(Before and after views above)
- Repairs to posts and railings near the Lookout.
- White line road painting on the bend by the New Inn.
- New information boards are now ready to be installed at the Beacon and North Street viewing areas, together with making the board at the Lookout more accessible.

Thank you, Jenner and IPC for all the hard work and determination to help improve Winchelsea.

It was an honour for Debbie and me to be invited to attend the IPC annual meeting, give a talk on our Museum and present the local community awards to so many worthy people. More information can be found on the Icklesham Parish Council website.



IPC presentation to John Botterell

Church Service for *Demelza*

A wonderful Sunday service by Jonathan Meyer including local children re-enacting the biblical story of Jairus' daughter. Towards the end of the service Donna and Liz from the Demelza team based in St Leonards provided an insight as to how this charity works to care and support children, siblings and parents. Donations from this service will form part of the 'Winchelsea Pot', which will be presented to the Demelza team during December.



Court Hall, Museum, and Gates

In July Rother DC granted us permission to proceed with the renovation of the external West Gable Court Hall wall. This work will commence in September, and a 'pop up/pop in' exhibition will be available for those wishing to know more about the project. Full details will be in the September Magazine.

The clearance of vegetation for all three town gates is also due to take place in September. We are also planning

restoration of the Victorian Court Hall doors during Autumn, together with updating the Court Hall toilet facility.

As always FOAM have been brilliant at providing financial support and help to the Corporation which enables us to achieve our projects through their amazing fundraising events, including cellar tours. During August, I shall be raising funds for FOAM by running two historic tours of Winchelsea. FOAM have also kindly agreed to run a special cellar tour on 15th August for the Demelza pot. Details of all tours can be found at ticketsource.co.uk/foam

A big thank you to all our Museum volunteers that open six days a week until the end of October. So far visitor numbers to the Museum are up compared to last year.

Birthday

It was a great privilege to be invited to attend a very special birthday celebration of Betty Moore who, on 25th July, became 100 years young. Betty lives at Five Villages in Icklesham (which is a wonderful community). A truly amazing person. Even up to the age of 90 Betty was still playing the cornet for the Sussex Brass Band.

On several occasions Betty has performed in the Winchelsea New Hall and Cricket Field for summer fetes and other events. The Vice Lord-Lieutenant of East Sussex, Graham Peters, presented Betty with that all-important card signed by King Charles and Queen Camilla. Members of the Sussex Brass and Hooe Band played *Happy Birthday* followed by *Sussex by the Sea*. Betty is a shining example to us all.



School

Fabulous school fete, and great to hear a lot of money was raised. On a different note, it was so lovely to attend the special assembly in which the children gave a tribute in words, song and video to their wonderful head teacher Carol Gardiner, who has now retired. Thank you, Carol.



Race Night : Charity Fund Raiser

Last Saturday was an evening of great food, excitement, fun and laughter. (This event had sold out the week before). We never thought we could fit a horse and jockey into the hall. We raised a total of £1,350, with £750 going to Winchelsea Museum and £600 into the 'Demelza Pot'. Brilliant result, and lovely to see guests from both Winchelsea and Winchelsea Beach.



A huge thankyou to everyone that supported this event. The team organising the event worked really hard on the whole event, together with all the additional help that was given on the night. We are so grateful for all the food donated by a loyal salad makers, Jamie Wickens Butchers,

Winchelsea Beach, Brett of Johnson's Fruiterers, Atlas Business Park Rye, and of course all the cash donations.

Confederation of the Cinque Ports

The official installation of the new Lord Warden and Admiral of the Cinque Ports, Admiral Sir George Zambellas will take place in Dover on 29th October.

Fundraising Dates for your diary

Saturday 17th August at 2pm:

Winchelsea and the Cinque Ports talk at the New Hall.

Sunday 22nd September at 7pm. *Quiz Night* at the New Inn.

Saturday 23rd November at 7pm:

An Evening of Murder and Mystery at the New Hall.

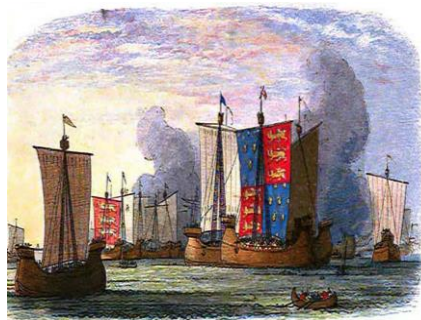
Sunday 8th December at 7pm:

Special Demelza Christmas Quiz Night at the New Inn.

Sunday 15th December at 7pm:

Carol Singing and cheque presentation of all monies raised to Demelza Staff at the New Inn.

As always, thank you for all your kindness and support
Peter and Debbie



Winchelsea and the Cinque Ports

A presentation by local historian, David Hopkins, entitled *Cradle of the Navy or Nest of Pirates?* in the New Hall on Saturday 17th August from 2pm to 4pm.

£5 entry payable at the door - including tea and coffee.
All proceeds will go to Winchelsea Corporation (Charity No. 1992506). For reservations or enquiries, email peterrcosstick@btinternet.com



Beating of the Sea Bounds at Poole

On 7th July, David Merrifield, past Mayor and Baron of the Cinque Ports, represented Winchelsea at the Beating of the Sea Bounds ceremony in Poole and presented a Certificate of Greetings to the Mayor and Councillors.

This ceremony first took place in 1609 and commemorates the granting of the Winchelsea Certificate to Poole in 1364. At the time, Winchelsea was charged by Edward III to adjudicate over a dispute between Poole and Wareham to establish which town had authority over the waters of Poole Harbour. The Mayor and Barons of Winchelsea ruled in favour of Poole. This resulted in an increase in the revenues raised from the importation and landing of goods on Poole Quay, thus establishing a firm foundation for the future growth and prosperity of the town.

To commemorate this event, the sea bounds around Poole Harbour are visited by the Mayors of Poole and Wareham with other dignitaries and at five locations the Winchelsea Certificate is read aloud to proclaim Poole's jurisdiction over the Harbour. The local community participated in the day's proceedings which affirmed Poole's maritime authority and boundary integrity.

David was accompanied by his wife Sandra and they were honoured to represent Winchelsea at this historic event.

Elgan Llŷr Thomas *tenor*
Edmund Whitehead *piano*



*A recital of songs by Finzi, Quilter, Donizetti
Fauré and Vaughan Williams*

Sunday 1st September at 4pm

Winchelsea Arts

St Thomas' Church Winchelsea
TN36 4EB



*Tickets online at
winchelsea-arts.org.uk
and at the door*

£24

free for under 18s



winchelsea-arts.org.uk

Click here to see the full programme for the 24-25 Season



Winchelsea Wildlife High Summer

The Winchelsea nature group, Winchelsea Wildlife (WW) have had a busy time this summer monitoring moth varieties and numbers, counting the swifts and keeping an eye on the pollinator numbers around the town.

The weekly mothing sessions take place in the private gardens of interested individuals by arrangement throughout the summer. This year so far there does not seem to have been the same range or number of species as in the past two years. This could be for various reasons such as later seasons, changing weather patterns etc. but it certainly flags up the problem of declining pollinator numbers. Many of us have seen far, far fewer butterflies in our gardens in 2024.

In late July, we were guests at Phil Jones' moth trap in Pannel Lane. Phil works for the Wetland Trust and for many years has been ringing birds and teaching people from all over the world these skills, from such regions as The Gambia and Bangladesh. Over the last twenty years he reckons to have trained upwards of 1000 ringers.

We saw him open some wriggling bags containing tiny warblers. With great skill he placed a tiny ring on each leg, checked wings, weighed each bird and checked for fat

deposits to assess whether they were ready to make their long migratory journeys. This was followed by the opening of his moth trap. There were some that were new to us, which is always very exciting, such as the Sharp Angled Peacock (below), the Herald and the Lunar Spotted Pinion.



The churchyard flower circles are doing well despite the irregular drenchings and bakings but it very evident that pollinator numbers are down there too. We will be having the annual cut towards the end of August but the date has yet to be confirmed. If you may be interested in helping or joining in with a summer churchyard working party, please let me know by message or email, as soon as possible. Tasks can include mowing, raking, weeding and pruning. Refreshments are provided.

And finally, Winchelsea swifts. Usually leaving our shores at the end of July or the beginning of August, the vast majority appear to have left already, as I write on 29th July.

On 20th June we gathered in the churchyard to try and assess numbers. Following the guidance of the Swift Conservation Society on counting such fast moving and acrobatic birds, we attempted an accurate estimate of around 25-30 individuals.

These red-listed birds can be vulnerable to predation when low temperatures lead to less insects in the air and, therefore, less to eat. The University of Sheffield have completed a study showing that urban areas are becoming more biodiverse than the countryside, as they are not sprayed with chemicals. Swifts are tending to thrive in those areas. We need to stay vigilant and continue to arrest the decline in numbers of this iconic bird.

Shirley Meyer



Icklesham Parish Council

Future Meetings

12th August at 6.15pm – Planning Meeting followed by Allotments Committee Meeting at Winchelsea Court Hall.

9th September at 6.15pm – Planning Meeting followed by Full Council Meeting at Rye Harbour Village Hall.

The latest Full Council Meeting was held on 8th July at Winchelsea New Hall.

Grants Awarded to Local Organisations

The Parish Council were pleased to grant £2,000 to Rye Bay Football Club for repairs to the pavilion on Harbour Field in Winchelsea Beach.

As the Parish Clerk is now CILCA qualified and the Parish Council meet the other necessary requirements, the Parish Council now has “the General Power of Competence” which gives the Parish Council more powers to deal with a wider range of issues.

Village Fetes

The Parish Council have decided this year to have an information stall for the first time at each of the upcoming

village fetes: Icklesham on Saturday 3rd August,
Winchelsea on Saturday 10th and Rye Harbour on
Sunday 18th.

We look forward to seeing you all there as it is so important to support our village fetes which raise much needed funds for the village halls and provide some much needed fun.

Burglaries

The Parish Council have been made aware of a number of burglaries that have taken place in Winchelsea and the surrounding areas. The thieves appear to be focusing on outbuildings and garden equipment and vehicles. The police are aware and are investigating. The Parish Council urge residents to ensure outbuildings are locked and to report any suspicious activity to Sussex Police.

Recreation Grounds

Please may we remind residents and local groups that if you wish to hold an organised event on any of the recreation grounds within the Parish, please seek permission from the Parish Council via the Clerk before doing so - contact details below.

IPC are here to represent you and welcome your views on any matter. Please contact the Clerk to send your views and requests to the Council at ickleshampc@hotmail.co.uk or write to PO Box 148, Winchelsea, TN31 9FP 07714 169901



Wine Society

Following a delightful visit to Charles Palmer, WWS is now gearing up for the autumn and please note the following planned events:

On Friday 4th October, we will introduce the first leg of a trilogy of Italian wine tastings, spread over three years, to gain a better understanding of what this great wine producing country has to offer from North, Central and Southern Italy. Our first tasting will focus on Northern Italy featuring three benchmark whites and three classic reds, including top notch Barolo and Amarone wines.

Simon Legge will be joined by Sergio Rebecchi to guide us through the wines and regions they come from. Sergio has also selected a superior Prosecco to get the evening off to a convivial start.

Then on Friday 29th November, we will celebrate the arrival of Beaujolais Nouveau, summoning the heady days of the 1970s, when folk flocked to gather the fresh fruity juice

before it passed on to calm maturity. Why has this annual festive habit has all but faded away? Of course there is more to Beaujolais than Beaujolais Nouveau, so we will also taste three premium Cru Beaujolais wines to add a little gravitas to what will be a fun, retro evening.

Further details, including pricing, will be provided in subsequent issues of this magazine. If you are not yet a WWS member, please consider joining - at no charge this year - so that we can give you early notice of these and other future events. Just email

winchelsea winesociety@gmail.com

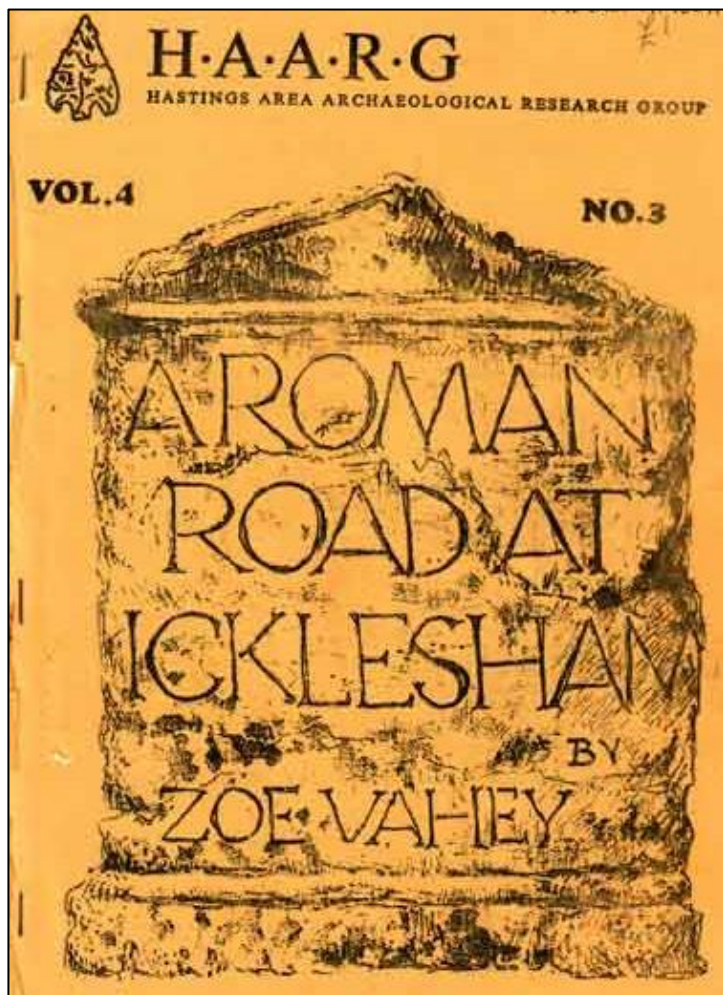
Events in Winchelsea Beach in August

On Saturday 3rd August there will be a dance in the village hall at 7.30 with *The Kytes*. A few tickets are still available from Mary Parker 07927 107678 costing £20 and including a fish and chip supper.

Mothers Prayers will be on Tuesday 6th August at 10am at *Dabchick Cottage*, Morlais Place.

There will be no Fellowship Lunch in August.

The next lunch is on Friday 27th September at 12.30 for 1pm in Winchelsea Beach Community Hall. All are welcome but please inform Mary if you are coming.



WAS in Roman Icklesham

On the morning of Saturday 10th August, Philip Merricks has organised a local history and archaeology walk around Old Place Farm, Icklesham. This will start with a visit to the site of the Roman iron bloomeries (furnaces) where Bob Turgoose (Chair, Wealden Iron Research Group) will explain the method used by the Romans to produce iron.

The walk will continue to the site of the excavation of the Roman road by Zoe Vahey and her team in 1978, 1981 and 1982. Prof Hamish Maxwell Stuart, who was a student at

the excavation and who is now a history professor will describe details of the excavation and the discovery of the Roman road.

The walk will then move down to the site of the Old Place medieval (and possibly Roman) harbour which was excavated in 1975 and 1976. Vicky Mills, the former curator of Hastings museum, will describe some of the finds from the excavation, which are in the Hastings museum.

The walk will conclude with a walk up the medieval (and possibly) Roman sunken lane along which Caen stone from Normandy was carted from the harbour to the church.

Meet at 10.30 on Saturday 10th August in the Queens Head car park. All are welcome.

We realise that the Winchelsea Fete is being held during the afternoon of Saturday 10th August. The same date was chosen for the WAS morning walk because it was when our visitors who had participated in the earlier archaeological digs were available to attend. As one of the speakers will have come from the Antipodes it was a unique opportunity to hear at first-hand about the original excavations.

It was felt that an earlier start than usual at 10.30 am would enable the walk to finish by about noon, allowing people to take part in the fete. This is not ideal but it was felt that it was preferable to not holding the event at all.

Andrew Scott



Dick Whittington A Panto for Winchelsea

Friday 24th January and Saturday 25th January
in the New Hall.

Here at panto HQ, we are getting very excited, we've just read the first draft of Jo's amazing script, so it's time to start thinking about who would like to join us on stage for *Dick Whittington*.

The plot is perfect for Winchelsea; a young man comes to town with his cat, wins the heart of the shop keeper's daughter and after a tussle with King Rat becomes Mayor.

We need someone to play Dick of course, (this can be either male or female), The fairy, King Rat (the villain), Cook (the Dame), Alderman Fitzwarren (who owns the Little Shop), Alice (his daughter and plot spoiler - Dick's future wife), Idle Jack, the Captain and lots of small roles. Together with two wonderful comedy songs to perform.

And as it is set in Winchelsea, we've decided that Dick's rat catching companion, Timmy, shouldn't be a cat but a dog. So, if you are good at nodding your head and wagging your tail there is even a role for you.

So why don't you come along to our audition, at the New Hall on Tuesday 17th September at 7pm and join the fun.

Whether you would like a starring role, a small part, or would like to join the chorus, we want to hear from you.

By the way, if audition sounds a bit scary, it's really just an informal get together where we can start to sort out who might do what. And if you can't make that date, don't worry, just let us know you are interested in a role.

And if acting is not your thing, but you would like to help out backstage or front of house, contact one of us at Panto HQ. And of if you don't fancy any of those tasks, you can still lend your support, by coming along to the show and help us raise some money for good causes.

Profits are going to be split between the New Hall and the charity, Demelza. And of course, no Winchelsea event would be complete without a raffle, and ours will be used to raise money for the church.

Just to get you in the mood

Idle Jack: I am taking my car to the vets.

Dick: The vets?

Idle Jack: Yes, it's a Jaguar!

Panto HQ email chriswinchelsea@icloud.com

Nigel Ashton, Ali Casey, Chris Chappell, Peter Cosstick, Glen and Jo Marks.



Old Bladbean Stud

On a sunny July afternoon a group of intrepid garden enthusiasts set off to visit *Old Bladbean Stud* Garden in Kent. It was promoted as being "near Ashford". It isn't. Further and further we went into the East Kent countryside in our little coach, on and on and up and up along ever narrower country lanes through deep dark woodlands to the very roof of the Kent downs where at last we reached our goal and pulled into a grassy courtyard surrounded by large trees. Then it poured, umbrellas were quickly handed out, and the sun shone once more.

Outside a large rustic iron gate we were met by a smiling, enthusiastic Carol Bruce, the owner, who began creating the three acres of interlinked gardens over twenty years ago from rough grassland, and who maintains the whole entirely

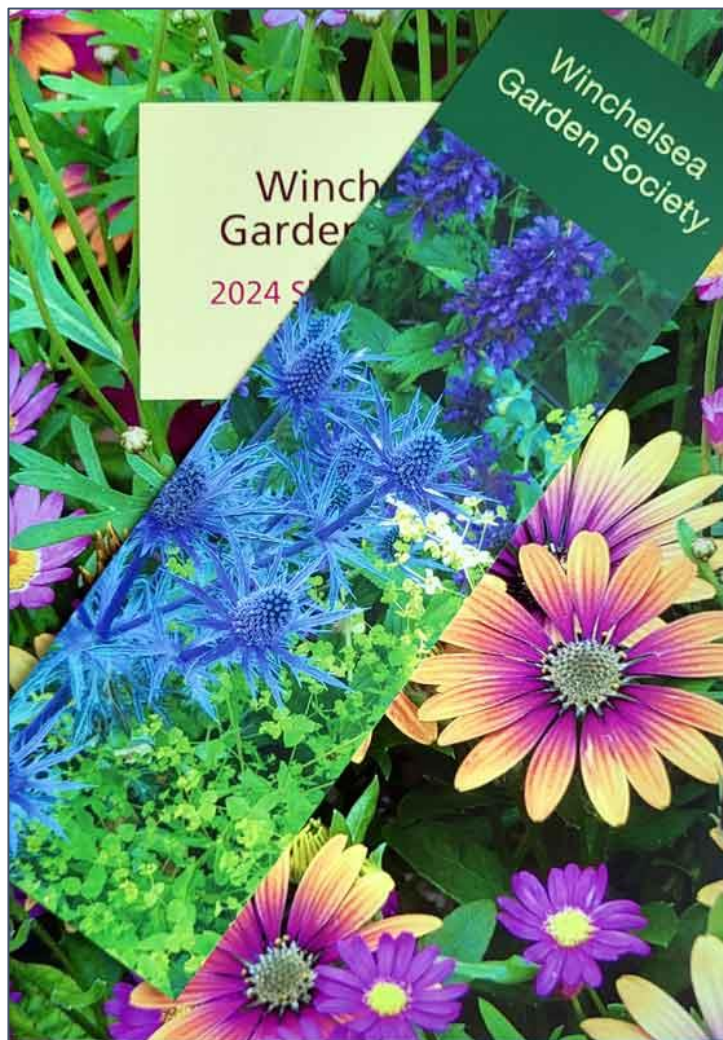
by herself. As Carol began guiding us along narrow garden paths bordered by towering perennials, all blues and whites and purples, what we were about to experience is not so much a garden as a mission statement, a kind of personal philosophy where nature and mindfulness rule.

All is managed as an ornamental ecosystem; plants are encouraged to grow naturally and compete for space and light and to spread and set seed without the aid of chemical fertilisers or pesticides. In Spring the roses, of which Carol has over 80 mainly once flowering varieties, are trained and pruned, Summer is the time for tying and hoeing, in the Autumn all is cut back with the resulting mulch left to be reabsorbed into the soil and the cycle begins again.

We were left to wander by ourselves around the rose garden, the pastel garden, and a magnificent 300 foot long double blue and white border until we met Carol again in the yellow garden to be served delicious tea and cakes. In all this was a thoroughly enjoyable day thanks once more to Shirley Meyer who organised it, leaving most of us keen to go back again in Spring when the roses and perennials begin their display.

Philip Kent

oldbladbeanstud.co.uk



Garden Society Summer Show

The Show takes place on Bank Holiday Saturday - 24th August - in the New Hall starting at 2pm. Members will find all the details in the 2024 schedule. Exhibition categories include Flowers, Dahlias, Floral Art, Vegetables, Fruit, and Handicrafts. Admission is free.

garden@winchelsea.com

Miracle

Don't think it was easy: it wasn't,
Saying 'Yes' to a conception I couldn't explain;
At first Joseph's parents weren't too keen,
They told us straight what it would mean
Being socially ostracised, ritually unclean—

They wanted Joseph to find a better girl: one
Who'd kept her purity; he nearly did too.
At first, he wanted to put me quietly aside,
Kindly though, to avoid my shame and to hide
His own; even he was convinced I'd lied.

His parents got over it in the end: somehow;
An angel told Joseph to accept the child.
In His birth-blood I saw His death-blood too,
And in this paradox of God's I knew
It was the first miracle of many He'd do.

He was never a child in the normal sense: always
Somehow strangely adult; I was the child
Of the two! He never cried, or lied,
Or asked for things; we never had to chide
Except when we found Him disputing at the doctors' side.

The hardest thing of all was to watch Him die: I
Didn't understand, even then, what it meant.
I thought it was the end, with nothing to come:
He was swaddled again but this time in a tomb,
Not in His manger as the fruit of my womb.

His followers fled like shepherdless sheep;
The Magdalene's face was a mask etched in grief.
A widow, I went to John's house as He'd said.
When the rumour spread that He wasn't dead
I dared to remember what the angel had said.

Then I prayed a prayer: as I knelt there
Praising God for His goodness to me, and to all;
When He seemed to quicken again under my heart
I knew it was true: He was living, a part
Of the Godhead, never to really depart.

Richard Ormrod

*The Feast Day of the Blessed Virgin Mary
falls on 15th August*





John Wesley's Chapel

At the Chapel Anniversary held this year in mid-July, after singing hymns under the 'Wesley' tree in the heart of the town – a witness to passers-by on foot and motorised as shown in the photo – we were treated to a very moving service of praise and personal testimony by Rev David and Mrs Christine Freeland, which included one hymn written by our organist Stephen specifically for the Chapel. It was a truly lovely service; one of which our founder would have been proud to be part of.

On Saturday 10th August we have a Coffee Morning from 10am to 12pm. This is really just a time for a chill and a chat. If you would also like to bring some home-made goodies to share too, that would be brilliant. But the important thing is to come. You will be very welcome.

On Saturday 14th September the Chapel will be open from 10am to 5pm during the national Heritage Open Days programme period. The Chapel, as well as St Thomas's, will also be open to welcome those cycling, walking or running in the Sussex Historic Churches Trust 'Ride and Stride' sponsorship event.

But the highlight of the day should be the 'Take the Floor' concert which starts at 2pm, when there will be an

opportunity for everyone, young and not so, from the local Methodist Churches and Winchelsea town, to come and show off your abilities in spoken word, music or even mime.

The programme will be coordinated by Ken Hatch and Stephen Page. Each performance may only be for a minute or two or up to a maximum of 10 minutes and we will welcome you whether you feel talented or not to share something with us.

We look forward to welcoming both novices and virtuosos to our lovely, intimate space and sharing in some beautiful performances.

So if you would like to show us what you can do, please contact Ken Hatch to book your slot with details of both performer and performance. Phone 07935 902657 or email familyhatch2@gmail.com

Please feel free to join us or pop in for any of the Chapel events. We will be delighted to see you.





Attic Sale

Have you ever wondered what treasures are hiding in the attics of Winchelsea? We have asked parishioners to delve deep into their lofts and roof spaces to uncover long forgotten objects of interest.

We invite you to rummage through this special collection of superior objects to raise funds for Sussex Historic Churches Trust and our own treasured building. The donations have been especially curated and all items will have a minimum price tag of £5. Entrance to this unique event at St Thomas's is £5 to include coffee and homemade cake and a guided tour of the church.

And the attic sale is not the whole story. As part of this fundraising event, there will be a sponsored walk in the morning between St Nicholas Church at Pett Level and St Thomas's. If you would like to raise funds by joining the sponsored walk, contact David Harris, St Thomas Treasurer for a sponsorship form and further details.

harrismanuell@outlook.com

These two fundraising events will take place on Saturday 14th September with the Sale starting at 2.30pm. We look forward to seeing you. There will be events at Wesley's Chapel on 14th as well.



The Pipewell Gate by Robbie Gooders

Millennium Artefacts Art Exhibition

Don't forget to put August 24th to 26th in your diaries to come to this year's Art Exhibition. After the success of last year's 25th anniversary we shall be exhibiting eleven new artists from Sussex, Kent and beyond, to include seven from Winchelsea new to the exhibition.

There will be ceramics, pottery and jewellery together with the work of two new photographers, not forgetting five young artists from St Thomas's School. There will be a rich selection of raffle prizes to help our fund raising to support the maintenance of the town's Artefacts



The Fall of the House of Usher

Lines End Cellar Theatre in association with Concord Theatrical and FOAM will present *The Fall of the House of Usher* by Edgar Alan Poe in a version by Steven Berkoff.

Produced by Phil Mack and Ian Rowlands and directed and designed by Nigel Ashton, performances will take place in the cellar at Lines End on Friday 25th October at 5pm and 7pm and Saturday 26th October at 2pm and 7pm. Tickets cost £25 and a pay bar will be available.

Poe was tortured all his life by taphophobia, an overwhelming fear of being buried alive. In this extraordinary play the eponymous Usher invites his oldest friend to his remote estate in Norfolk to seek his help in saving the life of his younger sister. The house of Usher itself seems on the brink of collapse and mirrors the fate of its inhabitants. This immersive production in the intimate Lines End Cellar Theatre promises a unique evening of gothic tragedy.

[Click here](#) to find out more.
Buy tickets at ticketsource.co.uk.



Are you in the Book yet?

Have you been given a questionnaire to fill in for the Winchelsea 2025 Book? The team have been delivering them as widely as they can round the town but we know some of you have been missed.

Equally you may have filled in your questionnaire but not managed to get it back to us yet. And if you keep meaning to but haven't quite got round to completing it, now's the time.

If any of this is you, please get in touch and we'll try to do something about it: email rakaposhi23@hotmail.com or chriswinchelsea@icloud.com

We realise not everyone will want to take part in the project but we very much hope that as many people as possible will do so. The response so far has been enormously encouraging.

Quite a few of you have already had your photos taken for the book and Jonathan Murphy will be taking more in September.

As well as including streets and residents, there will also be sections on Winchelsea societies, on the School and shops (not forgetting the chip van) and will try to give a snapshot of the town 25 years after the millennium.



Harvest Supper

The church will host a Harvest Supper on the evening Saturday 5th October. This isn't a fundraiser, simply an opportunity for the community to come together at the New Hall for a supper and a dance, with music by the Climax Ceilidh Band.

Tickets will cost £20 for adults and £5 for children and will be on sale at Church Market from September - or contact Nigel Ashton nigelmarkashton@gmail.com

climaxceilidhband.co.uk



PLIRB News for August

It's not been the brightest of summers, the season was definitely slow to get started. But as always, Pett Level Independent Rescue Boat is kept very busy with shouts, community events and planning.

PLIRB volunteers spent an extremely valuable July Saturday visiting four independent lifeboat stations to learn more about their boat and vehicle assets and operational procedures. Our crew enjoyed time on their boats and at their stations and absorbed huge amounts of information. A big thanks to Hamble, GAFIRS, Solent and Ryde Lifeboats for being so welcoming and sharing such valuable information.

As we are all independent from RNLI and self-managed and self-financed, building relationships and sharing knowledge is paramount to our progression and development.

Later that evening we made another visit to our partners at UK Coastguard at their HQ in Fareham. As always, a hugely insightful couple of hours learning about their operations and sharing our updates.

George Amos has been volunteering with PLIRB for a few months as part of his Duke of Edinburgh Award. Last week

George successfully achieved his Bronze Award – a huge congratulations from us all! George has been a brilliant young volunteer – getting stuck into every aspect of training and proving to be quick to learn and a valuable team player. George is going to continue with his DofE progress and his volunteering journey at PLIRB.

Annual Open Day 2024

This is our most important fundraising event. Please help support the event by:

- Buying tickets for the Grand Raffle – available from the Royal Oak, Pett Butchers, Eater's at Pett Café or from the boathouse on Sunday mornings. If you can't get to any of them – please email us at plirbrescue@gmail.com to purchase. Top prizes include an inflatable kayak package with life jacket, wetsuit, hat and dry bag – worth over £700.
- Donating a prize for the Grand Raffle
- Donating a bottle or two for the bottle tombola
- Baking a cake or other treat for the refreshments stall

Please email or call us on 07546 320 558 if there is anything you are able to contribute.

Buy a brick to build our Boathouse

We met with the surveyor to establish the work required to progress our exciting boathouse development and invited tenders to undertake the work. We are now on a fundraising mission to secure the funds we need to complete the project.

Our Buy a Brick campaign is open You can help secure the future of PLIRB by donating a 'brick' to build our new boathouse. You can donate directly using the QR code or contact us through Facebook, email or phone to discuss other ways to contribute. You can select the amount you wish to donate – please ensure you leave your name so we can add to your personalised brick.





PETT LEVEL INDEPENDENT RESCUE BOAT

OPEN DAY

**Sunday 25 August
11am-3pm**

**BBQ + BAR + DOG SHOW +
STALLS + LIVE MUSIC + BAR
+ GAMES + SEA DISPLAY**

GRAND RAFFLE

**INFLATABLE KAYAK | WEEKEND/MIDWEEK STAY
FOR SIX AT COMBE HAVEN | PLUS MORE!**



Reg charity No. 286891 | www.plirb.com



PLIRB summer calendar

We've been busy almost every weekend, we are so grateful to our volunteers who give up extra time to support our fundraising efforts.

1st August: RNLI 200th Anniversary Concert,
Stade in Hastings – Pett Slip Buoys singing
3rd August: Two Sawyers –
Pett Slip Buoys providing the afternoon entertainment.
4th August: Nearly on the Beach Concert, Hastings –
Pett Slip Buoys on the billing
10th August: Winchelsea Fete – PSB singing
11th August: Rural Past Times Festival,
Robertsbridge – PSB singing
17th August: Rye Country Show, Icklesham –
boat, games and PSB singing
25th August: Our annual Open Day



Join our team

We are always open to new volunteers joining us – there are many ways to get involved. If yore looking for a new challenge or want to be part of a friendly and talented team, do get in touch.

Contact us: www.plirb.com plirbrescue@gmail.com
01424 812457



Rye Food Bank

You can find out more about Rye Food Bank and ways you can offer support, here: ryefoodbank.com

Martin Owen, still standing in for Cam, will be doing the next monthly doorstep collection from those of you who are regular donors on the morning of Tuesday 20th August.

If you'd like to be added to the list of donors, please let Martin know by email mojowen@outlook.com or phone 01797 226968.

What's On Weekly At Winchelsea New Hall

Mondays 09.30-10.15	Pilates with Hannah	Suitable for all. Contact Hannah on 07936 151529 or email hannahpilateshastings@gmail.com
Mondays 15.00-15.50	Zumba Gold	Suitable for all. Contact Daisy at fitnessbythesea@outlook.com
Mondays 16.00-17.00	Pilates with Celia	Suitable for all ages and abilities. Contact Celia on kingcelia54@gmail.com
Tuesdays 10.00-11.00	Yoga with Natasha	Suitable for everyone from beginners to experienced. Contact Natasha on 07946 399211 or email nn@natashanandiniyogini.com
Tuesdays 14.00-15.30	Tune In Winchelsea	Fun singing group run by local tenor Gary Marriot. All ages and abilities welcome. Contact Rosemarie on 07941 458628 or email rosiero96@icloud.com
Thursdays 09.30-10.30	Scottish Dancing	A fun, friendly class, suitable for beginners. Contact Maddy at maddycoelho@hotmail.com
Thursdays 18.00-19.00	Legs, Bums and Tums New Class	Contact Rachel at Rotherfitnessgroup@outlook.com
Fridays 09.30-10.15	Pilates with Hannah	All welcome. Contact Hannah on 07936 151529 or email hannahpilateshastings@gmail.com
Fridays 10.45-11.45	Strictly Fitsteps	Fun exercise class. Learn the dances on 'Strictly' without a partner. Contact Amanda on 07768 095184 or at amanda@beacroft.net

*An informal table tennis group often plays on Thursday evenings -
contact Jane at janearchutowska@yahoo.co.uk

**The hall has table tennis and badminton equipment and can be booked
on an ad hoc basis for £2 per person per hour – contact Rosemarie on
07941 458628 or at rosiero96@icloud.com for details

Winchelsea Church and Town Calendar

August 2024

Thursday 1st	Open Air Theatre - School Field - 7.30pm
Saturday 3rd	Church Market at St Thomas's - 10.30 till 12 Summer Dance - W B Community Hall - 7.30pm
Sunday 4th	8am: BCP Holy Communion at Winchelsea 9.30am: Parish Eucharist at Pett 11am: Parish Eucharist at Winchelsea Winchelsea Cricket Club home match - 2pm
Tuesday 6th	Mothers' Prayers - 10am
Friday 9th	Funeral of Ann Dawson - St Thomas's - 12pm
Saturday 10th	Wesley's Chapel Coffee Morning - 10am till 12 Archaeological Society walk - 10.30am Winchelsea Summer Fete - 12 till 4pm
Sunday 11th	8.30am: BCP Holy Communion at Pett Level 9.30am: Parish Eucharist at Icklesham 11am: Parish Eucharist at Winchelsea
Saturday 17th	Winchelsea and the Cinque Ports talk - New Hall - 2pm Film Night - New Hall - 6.30 for 7.30
Sunday 18th	9.30am: Parish Eucharist at Pett 11am: Parish Eucharist at Winchelsea
Saturday 24th	Millennium Artefacts Art Exhibition - Court Hall Garden Society Summer Show - New Hall - from 2pm
Sunday 25th	9.30am: Parish Eucharist at Icklesham 11am: Parish Eucharist at Winchelsea Millennium Artefacts Art Exhibition - Court Hall Pett Level Rescue Boat Open Day - 11am till 3
Monday 26th	Millennium Artefacts Art Exhibition - Court Hall
Sun 1st Sept	8am: BCP Holy Communion at Winchelsea 9.30am: Parish Eucharist at Pett 11am: Parish Eucharist at Winchelsea Winchelsea Arts Concert - St Thomas's - 4pm
Sat 7th Sept	Church Market at St Thomas's - 10.30 till 12

Further ahead

Sat 14th Sept	Sussex Historic Churches events
Sat 5th Oct	Harvest Supper
Sat 12th Oct	Winchelsea Arts Concert
Fri 25th & Sat 26th Oct	Fall of the House of Usher performances
Sat 26th Oct	Residents' Association AGM



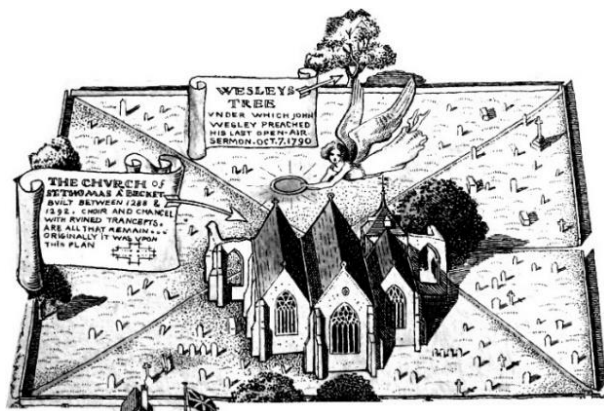
**Please send copy for the September Magazine to
ryeview@gmail.com
before Friday 30th August**

For Winchelsea Beach information go to
winchelseabeachcommunityassociation.co.uk

For Winchelsea information go to
winchelsea.com

For more information about the Church go to
winchelsea-icklesham-churches.org.uk

For weekly news from the local area go to
ryenews.org.uk



Rector of Winchelsea and Icklesham and Priest in Charge of Pett

The Revd Jonathan Meyer
 The Rectory, St Thomas Street, Winchelsea TN36 4EB
 01797 226254 revdjonathan@btinternet.com
 The Rector's day off is Monday

Churchwardens

Celia King
 Stargazer, Morlais Place TN36 4LG
 01797 227858 kingcelia54@gmail.com
 Nigel Ashton
 Winchelsea Cottage, High Street TN36 4EA
 01797 222023 nigelmarkashton@gmail.com

St Thomas' Primary School

Headteacher Dale Saxby
 Friars Road TN36 4ED 01797 226479
office@st-thomas-winchelsea.e-sussex.sch.uk

Friends of Winchelsea Church

Chairman Ben Chishick
 Tower Cottage, Barrack Square TN36 4EA
 01797 226653 towercottage@btinternet.com

Parish Magazine

Editor David Page
 4 Kent Close TN36 4EX
 01797 226524 ryeview@gmail.com