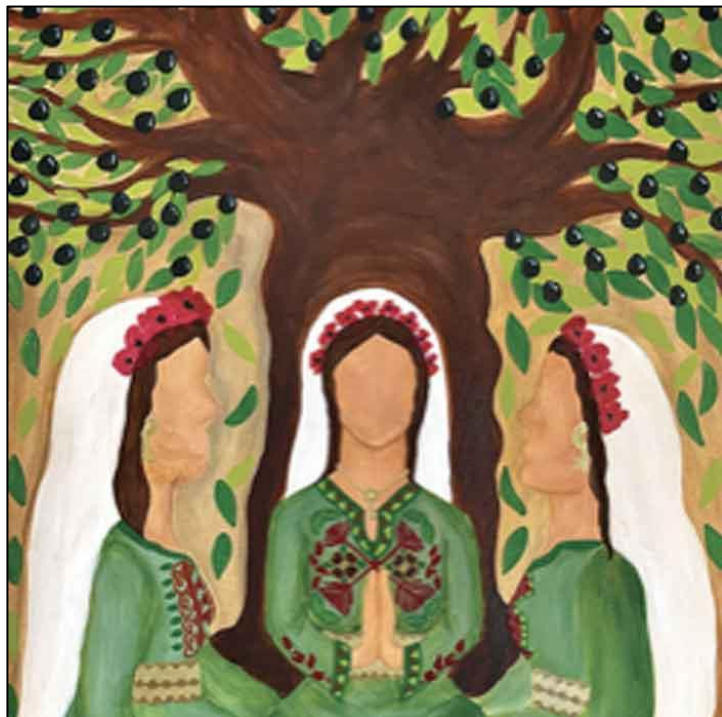


# WINCHELSEA PARISH MAGAZINE

March 2024





## **World Day of Prayer - 1st March**

This year's theme is 'I beg you, bear with one another in love'. World Day of Prayer is an international, inter-church organisation, led by women, which enables us to hear the thoughts of women from all parts of the world: their hopes, concerns, and prayers.

This year the Christian Women of Palestine are calling us to connect with the land from where Jesus came; where he was born, ministered and died – and from where the Christian faith began and is rooted. The Palestinian Christian women who wrote this worship service invite us to pray for peace, justice and freedom of religion and movement, asking us to pray for women, refugees, the sick, dying and grieving.

This years' service in our area will be held at St Mary's Church Centre, Rye (next to the Kino) at 10.30am on Friday 1st March.

**Would you like** afternoon tea at the Ritz? A picnic in a vintage VW camper? Or perhaps some yoga or a bowls taster session? **Maybe** you would like a cookery masterclass, go stargazing, or birdwatching, help with your cryptic crossword. Or you may prefer to sit back while someone serves you a medieval banquet, or delivers some lovely jams, marmalades or a cake to your home.

**All this is possible at our**  
**AUCTION**  
**OF PROMISES**

**So come along and bid for  
these unique items and raise  
money for the New Hall**



**Saturday  
March 9th**

**7pm Winchelsea New Hall**

**Tickets £5 (includes Glass of Fizz and Canapés)**

Available from Ali Casey [ali.casey63@gmail.com](mailto:ali.casey63@gmail.com)

or from Rosemarie Roberts [rosiero96@icloud.com](mailto:rosiero96@icloud.com) (Tel 07941 458628)

[Click here to see the Auction Catalogue](#)

As most of you will know, the New Hall is holding a fun Auction of Promises on March 9th at 7pm with the Revd Jonathan Meyer as our auctioneer.

Tickets are £5, which includes a glass of fizz and homemade canapes. For tickets, please contact Rosemarie Roberts, [rosiero96@icloud.com](mailto:rosiero96@icloud.com), 07941 458628, or Ali Casey [ali.casey63@gmail.com](mailto:ali.casey63@gmail.com) 07926 128737

We have delivered auction catalogues to all homes in Winchelsea now so you can read about the 50 promises we have been donated and decide what you might like to bid for. Contact Rosemarie or Ali if you have not received a copy.

Our 'promises' or lots include afternoon tea at the Ritz, gardening, a medieval banquet in a Winchelsea cellar, a trip in a vintage VW camper with afternoon tea and fizz as well as yoga, bridge and bowls lessons and a Times cryptic crossword masterclass. We also have cookery sessions, a personalised handmade Christmas stocking, an evening of stargazing, a bird watching walk, cakes, marmalade, mince pies and a year's supply of fresh sourdough bread...the list goes on. [Click on this link](#) for the full auction catalogue with all 50 promises. If you are not able to attend you can ask a friend to bid or leave an advance bid with Ali or Rosemarie.

Payment will be taken on the night (card, bank transfer, cash or cheque) and the date for the delivery of your 'promise' will be agreed between the winning bidder and the donor. All profits from the auction will go towards the refurbishment of the gents' toilets in the New Hall.

If you can help make some canapes for the event you will be welcomed with open arms. Please contact Rosemarie or Ali.

### **The New Hall 100 Club**

The winner for February was number 3. Thanks to Sue McGeown for selecting our winner this month.

### **New Hall Ladies' Toilets**

The refurbishment is now starting. For the duration of the work, the front of house accessible toilet is available. The refurbished ladies' facilities will be open in early May.



## Reflections from the Rectory

Some years ago, when I was a priest in charge in Ewelme, I received a telephone call out of the blue asking whether we would be prepared to allow some of the filming for *Les Misérables* to take place in the church. It seemed to be a good opportunity for the village and indeed exciting to see a serious film company and the celebrated director Tom Hooper in operation. As you can imagine there was a certain amount of preparation and we needed to get permission from the diocese. Without too much ado this was achieved.

When the filming actually took place it was as if a travelling circus had arrived. At least 40 large articulated trucks parked themselves on the sports field and in surrounding lands. Three enormous industrial cranes were brought in to provide powerful high-level lighting, several canteens were brought in and mobile make-up studios set up.

It is usual for musicals to have the sound track added later but in this case the soundtrack was recorded at the same time as the filming (a first I believe) so there was also a tent with a small orchestra which relayed the music live to the actors. The church was disguised, the tower was blocked off and set up as a tavern with real dead game hanging up on rafters and a live gas fire installed in a simulated grate.



The church was lit powerfully from the inside as some of the night filming took place outside in an artificial snow storm. We were allowed to watch from the walls of the churchyard. There was some excitement about seeing Hugh Jackman but when he tapped my daughter on the shoulder and said excuse me I need to be on set, we were all so overawed we couldn't speak.

As you can imagine it was quite an experience. Although the set up took about a week, the filming took place in one day and this enormous gathering of people (around 200), cranes and articulated trucks had gone in 24 hours as the Bard would have put it, like an *insubstantial pageant faded*.

One of the things that emerged from this experience was a Lent course based on the film and the book by Victor Hugo. Initially I devised it informally but it was picked up by the publishers Darton, Longman and Todd and they asked me to write a book which was duly published in 2013. We have decided to use it as the basis for our Lent discussions within this benefice and in conjunction with St. Mary's Rye.

It is based on looking at five of the leading characters from the film and examines their motives and thoughts. If you would like to consider joining us anyone is welcome and by the time you see this there will be three sessions remaining. Further details appear below.



In the end the theme of Hugo's wonderful novel is about the power of the human spirit and above all a message of

hope. The final words of the book have always been an inspiration to me,

*Should we continue to look upwards? Is the light we can see in the sky one of those which will presently be extinguished? The ideal is terrifying to behold, lost as it is in the depths, small, isolated, a pinpoint, brilliant but threatened on all sides by the dark forces that surround it: nevertheless, no more in danger than a star in the jaws of the clouds.*

## **Lent Course**

Once again we will be joining with the parish of St Mary's, Rye for a Lent Course. This year we will be using my Lent book based on the film, *Les Misérables*. Meetings will take place on Wednesdays in St Mary's Room in Rye - near the Kino - on 21st, 28th February and March 6th, 13th and 20th starting at 7:30pm. Contact Jonathan for more information, Books available from Jonathan at £5.99.

## **Lent Lunches**

with collections for nominated charities

### **Friday 1st March, Icklesham 12 noon**

A lunch of soup and cheese to take place in the church at Icklesham. All welcome – come and see the excellent work done by the Churchyard Committee. Some idea of numbers would be good so let Jonathan know if you planning to come.

### **Friday 8th March, The Rectory 12.30pm**

All welcome but please let Jonathan or Shirley know if you plan to come as numbers will be a bit tight.

## **Bible Reading**

Our informal Bible reading will continue on the first Thursday of each month at 6pm in the New Inn Winchelsea. On 7th March we plan to look at the gospel according to St John. It is a very rich text and for this session we will only consider the first two chapters but more extensive reading is always helpful. It is a very relaxed gathering and no prior knowledge is required: we always end around 7pm. There has been good attendance – look at it as Book Club with a difference. All welcome. Contact Jonathan for more details or with any questions, [revdjonathan@btinternet.com](mailto:revdjonathan@btinternet.com)  
01797 226254



## **Paris comes to Winchelsea**

*Nigel Ashton writes:* Quite by chance I met this delightful group of students from one of the most troubled areas of Paris; they were enjoying the winter sun in the church yard. They asked, in excellent English, if they might be able to view the church. They were absolutely fascinated by the building and particularly the part the French played in its destruction.

I've rarely met such a courteous and engaged group of teenagers, it makes me feel very positive for the future of Europe despite all the problems they currently face in the more challenging areas of their city.

---

## **Holy Week and Easter Services**

These are listed in the Calendar at the back of the Magazine. Full details will be published in the next edition which will be sent out on Wednesday 27th March.





## Scottish Connections

Not a Winchelsea window, but to see it is instantly to recognise the work of one of the best twentieth century stained glass artists, Douglas Strachan. This is a detail from the great East window of Paisley Abbey. De-industrialisation has hit Paisley hard, but when this window was commissioned in 1931, the town could afford the best. The window is vast - nine lights in width - ours is only five. The colours are different but the common theme and style is easy to see.

Douglas Strachan (1875-1950) was born in Aberdeen. He designed the windows for the Peace Palace in The Hague and for the Scottish National War Memorial at Edinburgh Castle. His stained glass can be found in many churches in Scotland but not so many in England. Ours is arguably the best and most complete collection of Strachan's work.

The Winchelsea link came about through Robert Younger, Lord Blanesburgh, who commissioned the windows for St Thomas's. Descended from Edinburgh brewers - the Youngers and the McEwans - Blanesburgh (1861-1946) was a senior judge and a law lord. (The role of the law lords is now exercised by members of the Supreme Court). Between the Wars he lived at *Greyfriars*.



A fellow of the Royal College of Music, Blanesburgh gave the organ as a memorial to his brothers and nephews and persuaded the Archbishop of Canterbury, Cosmo Gordon Lang - a fellow Scot and Balliol contemporary - to come to Winchelsea to dedicate it in 1931. Lang returned in 1933 for a service to dedicate the windows which was broadcast on the BBC. The sequence begins with the Mary Stanford memorial window on the South side and reaches its climax with the three on the North side dedicated to the men of the Cinque Ports and Ancient Towns killed in the Great War.

[Click here](#) to read more about the Winchelsea windows.

# Amici della Musica

Raphael Wallfisch *cello*

Philippe Graffin *violin*

Piers Lane *piano*

Elizabeth Wallfisch *viola*



Mahler *Quartettsatz - Piano Quartet in A minor*

Schulhoff *Duo for violin and cello*

Smetana *Polkas for piano*

Dvořák *Piano Quartet in E flat*

**Saturday 16th March at 7.30pm**



**St Thomas' Church**  
**Winchelsea**  
TN36 4EB

**Winchelsea Arts**

Tickets online at [winchelsea-arts.org.uk](http://winchelsea-arts.org.uk)  
and at the door

**£22**

free for under 18s



[winchelsea-arts.org.uk](http://winchelsea-arts.org.uk)



## **what3words ?**

On the evening of Thursday 15th February three members of Rother's Community First Responders instructed eleven of Winchelsea's residents in the practicalities of (and changes to) Cardiopulmonary Resuscitation (CPR), including how to use Winchelsea's main Defibrillator; located in the New Inn Car Park. The instruction took place at the Lower Court Hall and was by all accounts well received.

One very simple but important piece of advice to pass on to all residents of Winchelsea was to be aware of your 'what3words' location when calling for an ambulance. Apparently, there have been delays in the arrival of some South East Coast Ambulance Service (SECAS) vehicles because drivers can't find the address in Winchelsea (no street names and often no house numbers).

'What3words' is a proprietary geocode system designed to identify any location on the surface of the earth (including the oceans) with a resolution of about 3 metres. The system, which is free to use and can be accessed via a smartphone or computer, uses three random English language words as opposed to a string of numbers (coordinates).



By September 2021, 85% of British Emergency services were using 'what3words', including the Metropolitan Police, the London Fire Brigade and the South East Coast Ambulance Service (SECAS).

For example, the 'what3words' location for the front door to the Lower Court Hall is 'observes.goofy.sunblock'. Put your address in here - [what3words.com](https://www.what3words.com) - to find your three words.

Rother Responders, 'are a charity dedicated to preserving the health of people in Rother, East Sussex, and surrounding areas, through our team of volunteer Community First Responders, provision of Public Access Defibrillators (PAD's) and public education in emergency situations' The Responders work in conjunction with the Ambulance Service and one of the Instructors was also a full time SECAS Paramedic. [rotherresponders.org.uk](https://rotherresponders.org.uk)

My thanks for the assistance provided by the Mayor and Corporation of Winchelsea for the training, and further dates for any interested parties are being considered.

*Jerry Moss (herring.equivocal.houseboat)*



*Jennifer Sutherland*





## **The FOAM Quiz**

Following the successful and entertaining FOAM quiz on 17th February you may have noticed residents counting the benches in the churchyard to confirm the answer to one of the fiendish questions about Winchelsea and thereabouts.

This year's quiz was once again sold out and around 80 residents fought - or should that be thought? - in a closely contested battle to be crowned champions of Winchelsea trivia. The winners were the 'Winklepickers', led by captain Hilary Roome, who managed to squeeze home in the last round due to their superior knowledge of cheese, diseases and Ikea furniture.

As usual the event was a real team effort, Ian and Chris delivering and creating the questions, Phil managing the front of house, Nicola, Mark and Cheryl running the kitchen. Our cooks, Brian, Caroline, Debbie, Jo and Shirley who helped provide the Chilli. Chloe, Ed and Glen for helping with the bar and raffle. Many more gave raffle prizes, moved furniture, served food and tidied away at the end of the evening. And our special thanks to the New Hall team, for providing such a great venue and facilities.

The quiz raised in excess of £1,400, which will be put to good use, to support planned repairs to the Court Hall.

If you would like to find out more about what FOAM has been up to and our plans for 2024, please come along to our AGM on Saturday 23rd March. Doors open, soon after 10 in readiness for a 10.30am start.

Oh, and in case you were wondering, there are 18 benches within the walls of the churchyard.

*Best wishes the FOAM committee.*

*Chris Chappell, Mark Harris, Phil Mack and Ian Rowlands*

**Members are invited to the**

# FOAM AGM

**Saturday March 23rd**  
**10:30 Lower Court Hall**



**Friends of the Ancient Monuments & Museum**



## The Human Experience

*Natasha Robinson writes:* I am always amazed at how short sighted people are about retirees. 'I could never retire, I like to keep busy' or 'What do you do all day' are some of the strange and irritating statements I hear.

Restoring a sailing boat or biodiversity to a churchyard, replacing the beams of a community hall, running a Foodbank, organising an Arts Festival, Fêtes, Street Parties or Film Nights, running a Parish Magazine or a local newspaper; these are just some of the things that retired people I know, are doing.

Most of these people and from a personal perspective, Sergio and I have never been busier. The difference between gainful employment and retirement, apart from the obvious, was pointed out to me by Barry Yates at last Second Wednesday: 'When we retire we don't do less, we just have the freedom to choose what exactly we do'.

Dr Yates was the Manager of Rye Harbour Nature Reserve for 40 years and continues, in retirement, the important work he was doing there, by writing, lecturing, advising, supporting, promoting and protecting all aspects of the natural world. Which is what brought him to the New Hall in February.

Established in 1970, the Nature Reserve stretches across 465 hectares, or 600 football pitches, if that makes it easier to visualise. It has four special Seaside habitats; shingle, coastal grassland, saline lagoons and saltmarsh. On the Sussex Rare Plant Register, 48 species can be found at RHNR and 19 of those are flowers.

He spoke to us of *Babbington's Orache*, which live nearest to the sea, of *Yellow Horned Poppies*, whose flowers only live for a day and of the *Red Hemp Nettle*, the exclusive food of the extremely rare Flea Beetle. Even the most common plant of all, the *Sea Kale*, was able to surprise us; who knew its roots went down 3m into the shingle. All easy to walk past, but all critically important to the health of the Reserve and ultimately these islands.

He finished by explaining the importance of the paths, walks and hides that have been created for the nearly half a million annual visitors; quoting Sir David Attenborough: 'No one will protect what they don't care about and no one will care about what they have never experienced'.

And the lived experience is where Imogen Corrigan will be taking us on 13th March. Imogen returns to Winchelsea, following the success of her last talk on 'The Cathars'. She will bring back to life more medieval heroics and ingenuity; never the dry, dusty pages of history, but the vibrant and vital lives of real people.

'Stone on Stone: the Men who built the Cathedrals' or 'Master Masons' as she abbreviates her talk to. Not the 'how long' or 'how high' of the guide books, but the extraordinary stories of how, why and by whom these monuments were built. The real tales of human endeavour, organisation, leadership, hubris, deceit, resourcefulness and craftsmanship, behind those architectural masterpieces.

So mark down in your present day diaries, the second Wednesday of March, to meet those who made their mark in stone, all those centuries ago.



## **Rye Harbour Nature Reserve in March**

Saturday 2nd (5.30pm - 7pm)

**Pie and Mash Night at the Discovery Centre**

Wednesday 6th, 13th, 20th, 27th (9.45am - 11am)

**Wednesday Wellbeing Walk**

Saturday 9th (8.30am - 4pm) **Friends' Open Day**

Friday 15th (10.15am - 1pm)

**Beginning Birdwatching in Winter**

Sunday 17th (11am - 12.15pm)

**Bees of Sussex: Ten Bees and the Stories they Tell**

Sunday 24th (9am - 12pm)

**Friends of Rye Harbour Nature Reserve:**

**A walk with Friends**

Saturday 30th (10am - 3pm) - **Guide in a Hide**

Sunday 28th (9am - 1pm)

**Friends of Rye Harbour Nature Reserve:**

**A walk with Friends**

To find out more about any of these events, or to make a booking, please visit [sussexwildlifetrust.org.uk/whatson](https://sussexwildlifetrust.org.uk/whatson)





## **Winchelsea Archaeological Society**

WAS will be holding their AGM at Winchelsea New Hall on Saturday 16th March at 11am and invite existing and new members to join us.

This meeting will be the start of the 2024 season of 'Talks and Walks'. Andrew Scott has organised very interesting speakers and also information on new projects.

There are opportunities to help the committee and to be involved in some local digs. Do come along and explore the history of Winchelsea.

Andrew's investigation of the thirteenth-century Winchelsea Town Seal is now posted online. [You can read it here](#)

**Winchelsea  
Garden Society**

# **Spring Show**

- Flowers
- Floral Art
- Vegetables
- Pot Plants
- Cookery

**The New Hall  
Winchelsea  
2:00 pm Saturday  
30 March 2024**



[garden@winchelsea.com](mailto:garden@winchelsea.com)



## Small Jewels of Winchelsea

One little gem that this town is particularly rich in is *Navelwort*, also known as *Pennywort*, *Penny Pies* and *Umbilicus rupestris*. It is a distinctive plant that can be found growing from crevices in walls, stony banks and rocky areas, particularly in shady or damp places. It has fleshy, disc-shaped leaves and upright, straw-coloured flower spikes that appear from June to August.

The plant is usually found in the west of England, Wales and Northern Ireland, so the fact that it proliferates here is interesting. Not only do we have the green version but an amazing red version too. This led me to do a bit of research and the colouration happens due to strong sunlight. My photographs were taken in 2020 when we had that amazing summer during lockdown. It can also grow in very tight rosettes and is edible.

Now I don't recommend that everyone rushes out and starts foraging. Apparently, navelwort tastes a bit like peas but depending on where it has grown, can be very bitter. Like so many plants it also has a long folkloric history, including its

medicinal uses such as drawing out poison, easing nettle stings and chilblains, curing warts etc.

One blogger tells how “*Pennywort* leaves can be softened, a piece of grass used to pierce the stem and then blown up like balloons. (I could never do this but often saw others do it) [Minehead, Somerset, November 1993].”



So, think twice before pulling it out of your walls...it is a strange and beautiful plant doing no harm. Admire its tenacity!

*Shirley Meyer*





## **The Fire Hills**

Winchelsea Literary Society welcomes Henry Normal to its March meeting which will be held on Friday 15th at 7pm for 7.30. The meeting will take place at the New Hall rather than the usual Court Hall.

Henry moved to Fairlight in 2021 and his poems, *The Fire Hills*, were written during his first year in the area. He is a poet, TV and film producer, and host of his own occasional BBC Radio 4 show in which he mixes comedy and poetry.

Free admission to members, £5 for non-members.

[literarysoc.winchelsea.secretary@gmail.com](mailto:literarysoc.winchelsea.secretary@gmail.com)





Movement forms a crucial element of performance poetry with the goal being synergy or a fusion of forces rather than an uncontrolled explosion of energy.

Moving from autobiography and the theoretical, our speaker recited a series of his poems delivered with what we were soon to realise was his characteristic exuberant energy: *Brid* - extolling the pre-Christian Irish goddess of poetry, *Mighty Horn* - incorporating the rhythms and repetition of Rap into the format of a villanelle. Superficially, this lionised the god of war and the call to war as a rite of passage for young men but had the ulterior motive of neutralising toxic masculinity by self-parody.

Masculinity was further explored using an Action Man motif in *The Man Who Can*. Acknowledging that cliché is acceptable in Spoken Word circles, his piece, *Avoiding Clichés*, satirised disapproval as he introduced them as a “sinuous, sinister” element, while he foregrounded his pacifism in the maternal tribute *My Mother: Fighting Without Fists*.

Practical demonstration yielded to further rumination on Slam Poetry culture; time limits on recitation, competition, emphasis generated through repetition particularly in grime poetry and an endemic anxiety among performers manifesting itself in frequent resort to hyperbole. This colourful account concluded with the thought-provoking image of “the poet having sex with his work” (Paradise Regained?)

While some in the audience may have experienced a Pentecostal epiphany and a deeper understanding of the gift of tongues, the open-minded enthusiasts for the avant-garde, curiosity piqued, clustered round the speaker with searching questions. Time and future gatherings of the Lit. Soc. will tell if Lucas won any disciples.

*Bill Doherty*



## Winchelsea Wine Society

Winchelsea Wine Society (WWS) begins its 2024 programme on Friday 8th March at 6.15 for 6.30 at the New Hall with a tasting of wines from six countries around the greater Mediterranean - a 'Mediterranean Wine Cruise' - with no need to pack those Bermuda shorts and Panama hats. The event is set for a record attendance with no further bookings currently available.

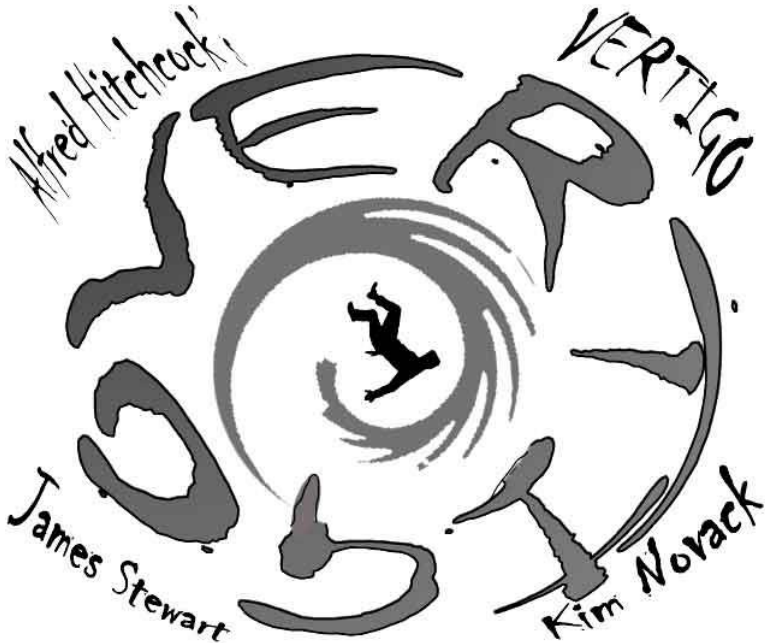
Membership of the newly formalised WWS provides early information about future events and other advantages. There is no fee for membership in 2024 and for 2025 the fee is planned to be £5.

Any local resident with an interest in wine who would like to join as a member (and has not already done so) should email [winchelseawinesociety@gmail.com](mailto:winchelseawinesociety@gmail.com)- and for the present, while we are changing our systems, please also copy the email to [brianleonard779@gmail.com](mailto:brianleonard779@gmail.com)



# WINCHELSEA FILM NIGHT

Winchelsea Residents Association in conjunction with Winchelsea New Hall



**SATURDAY MARCH 23rd 6.30 for 7.30 SCREENING**

**Admission Free**

**Refreshments, Pay Bar.**

**Come early, enjoy a drink or two.**



## **Church Market**

The next Church Markets will be held at St Thomas's from 10.30am till 12 noon on

**Saturday 2nd March**

**Saturday 6th April**

Donations of home-made and home-grown produce will be gratefully received for church funds. Savoury bakes: quiches, pasties, pies, are particularly welcome. The March Market raised £344.

There's a lot of new stock in the second-hand book department so everyone should be able to find something new to read.

Coffee, tea and good company.  
All welcome!





## **Start with your ears**

*Marion Lovell takes a deep breath:*

Alleluia! It seems that the previous ramblings may have encouraged our congregation to think more about the hymns. That was my objective. I was not intending to upset anyone. Please just think more about the poetry of the words, notice the punctuation, and look as if you are enjoying what you are doing. It is not a penance.

At least two people have been involved in creating a hymn, the author of the words and the composer of the melody. Usually their names are printed, and some of them may surprise you. Some of the 'new' hymns are getting on for forty years old now. We don't sing worship songs in Winchelsea. We are not aiming to be the chorus at Covent Garden nor soloists at Glastonbury. We are aiming to be the best that we can be, in our relationships, attitudes, behaviour and singing.

Now, singing starts with your ears, then your diaphragm controlling expansion of the lungs; all before we get anywhere near the vocal cords.

Ears: By listening to the hymn play-over you are understanding the pitch of the tune and the speed at which

to sing. Diaphragm: That's a big, strong muscle which basically supports the lungs. You will always be able to take in more air if you think about it. Having filled your lungs, the diaphragm will control the release. Is it slow and smooth, or sharp and percussive, like blowing a dandelion clock? Both techniques are used in singing.

Having got all this under control, the vocal cords can have their turn. Again muscles. And the more you exercise them, the better and stronger they will be. And it helps if you stand straight, balance your head on the top of your spine and look ahead. Yes, that means holding your book up. Don't sing to the floor, it's not listening.

This is one area where churches with screens for the words have a huge advantage. You are automatically in a good position to make a joyful noise to the Lord.

Our hymn book contains over 800 hymns, of which we possibly know about a third. That's around 300 hymns. So you are amazing to know so many. Can you remember a time when you didn't know any at all? Probably you learnt the first ones in Primary School when they sang hymns in Assembly. It's very different now.

Young people at weddings these days only seem to know 'All things bright and beautiful' and 'Morning has broken' from their Primary days. Nothing wrong with those, but there are plenty more to choose from.

Deep breathing is very good for health reasons, and it releases endorphins, which are good things. Hope this is helpful; congregations need to be encouraged to sing.

---

## **Fellowship Lunch on Good Friday**

St Richard's Fellowship Lunch will be on Friday 29th March which is Good Friday. For this month only it will be at 12 for 12.30 to enable people to leave early to go to the service in Icklesham at 2pm if they want to. As it will still be Lent the main course will be soup and bread. Anybody who would like to come should contact Mary on 07957 107678.



## **Progress on the Millennium+25 Book**

We are pleased to inform you that the proposed all colour 'singing and dancing' Winchelsea Book 2025' project – or 'Winchelsea at the Quarter Century' – has successfully passed its Hiham Green test.

We propose to start work in earnest after Easter, with a view to publication shortly before Christmas. The book is designed to be a colour follow-on and adjunct to the original black and white 'Winchelsea at the Millenium'. You can view extracts from the original publication on the project website, [winchelseabook.com](http://winchelseabook.com).

Additional information about the project will be added to the website soon, including a link to the Privacy Notice. This will explain how General Data Protection Regulations (GDPR) will apply. Although participation in the project is entirely a matter of individual choice, we must now ask willing participants to actively opt-in when taking part in any survey.

The main body of the book will be based on the results of individual surveys that will be distributed by hand to all households in Winchelsea, in April. The survey will contain a series of questions designed to build up a picture of householders and their perceptions of Winchelsea as we approach 2025.

Certain long-term residents of Winchelsea, about twenty people, will feature more prominently as their recollections of the town span anything from thirty to ninety years.

In May or June, residents who have chosen to participate will be invited to have their photographs taken either in their street or outside their house.

There will be a section on St. Thomas's School and a chapter on Winchelsea's societies, clubs, groups, organisations and congregations. If members have any quirky, amusing or representative photographs they are willing to share, they can contact a Committee member, or eventually submit photographs via the website.

We have divided Winchelsea into eighteen separate areas, each the responsibility of a separate 'Street Champion'. The Street Champions will be tasked with coordinating, distributing, collecting and collating the surveys, assisting in arranging the photography and answering any questions that may arise. Although surveys can be returned by hand, the Hiham Green trial showed that other methods may be better - including email or WhatsApp.

The surveys will be collated and sent to the editorial and publishing team to perform their magic.

We hope that as many people from Winchelsea as possible will want to assist with the project, either as participants or as Street Champions or as part of the editorial team. We firmly believe that 'Winchelsea at the Quarter Century' will not only be an entertaining and informative project, but potentially of useful historical interest to Winchelsea's future generations.

The committee are Jennifer Sutherland, Jonathan Murphy, Gillian Alexander, Chris Chappell, Jeremy Moss, David Merrifield and David Page.



## **WRA Report**

Winchelsea Residents Association continue to work on several projects and to respond to consultation requests on local issues. Here's a summary

### **Traffic**

The Committee is working up proposals for an alternative traffic calming scheme, possibly involving a 20mph limit and supporting measures. The aim remains to reduce speed and aggressive driving of traffic passing through the centre of the town. The proposals will be detailed in a report to be published for comment on the WRA website and will be part of a wider discussion with members at the Members' meeting on 27 April. Meanwhile, some residents may have seen East Sussex CC's draft Local Transport Plan 2024-2050. While it appears to offer little for East Rother, it is a draft document and WRA has responded to it.

### **A259 Working Group**

The Group has researched and compiled information identifying where the major problems are in the local area. A leaflet will be published soon and circulated to both national agencies and local councils to encourage improvements. We will also be liaising with our local MP to support proposed new investment.



## **Toilets**

This remains the subject of discussion between Rother DC and IPC. We have spoken to IPC this week. They are pursuing Rother to release the structural survey of the toilets commissioned by Rother DC. Once IPC has this information, the feasibility of maintaining the building will be more clear and hopefully decisions on its future can be made. In the meantime, WRA will keep a watching brief.

## **Pavements**

In January, East Sussex Highways (ESH) contractors were on site preparing for nine new pedestrian dropped kerbs in the Town. Commencement was delayed by the need to find a work around for the yew tree in German Street which is adjacent to a planned dropped kerb. All new dropped kerbs should be completed in the coming weeks.

## **Icklesham Parish Council Annual Meeting**

The parish council holds an open meeting for all residents every year. This is the only opportunity for residents to meet all the parish councillors, raise any local issue with them and find out how IPC can be involved in managing local problems. This year's meeting will be held on Monday 15th April at 7pm at Rye Harbour and we hope Winchelsea residents will attend and have their say.

## **WRA Members' Spring Meeting**

The next meeting will be on Saturday 27th April in the New Hall. We will send a reminder next month. WRA will update on all current issues and open up the meeting for residents to comment and raise questions.

## **Annual Membership Fee**

As agreed at the AGM last year, the membership fee will be £10 per person and will be collected from 1st April. We will send a request for payment by the end of March.

[info@winchelseaRA.com](mailto:info@winchelseaRA.com)

[winchelseaRA.com](http://winchelseaRA.com)



# Mayoring Ceremony

Winchelsea Corporation invite you  
to the Mayor Making ceremony  
at 11.am on Easter Monday  
in Winchelsea Church

All are welcome



The incoming Mayor and Mayoress will be hosting a drinks reception in the New Hall between 5pm and 6.30pm on the day of the Mayoring. All residents are invited.

[winchelsea.com/corporation](http://winchelsea.com/corporation)



## **Garden Openings for Charity**

### **Saturday 20th April**

Four gardens will open for the National Garden Scheme. Teas in the New Hall will be in aid of the Friends of the Conquest Hospital.

### **Saturday 1st June**

Gardens at Winchelsea Beach open for St Michael's Hospice. The Hospice is not organising openings in Winchelsea town this year.

### **Saturday 15th June**

Seven gardens will open for the National Garden Scheme. Proceeds of teas will be divided between the NGS and Friary Gardeners.

### **Sunday 16th June**

Six of the gardens that opened on 15th will open again in aid of the Friends of the Memorial Hospital, Rye.

**The first Winchelsea NGS garden** was *Cleveland House*, opened by Sarah and Jonathan Jempson in 1980. Later, the 'Winchelsea's Secret Gardens' group formed, organising openings in June. A spring opening was added in 2009. Overall, since the start, 33 different gardens have been part of the group and more than £150,000 has been raised in the town for the NGS, which distributes the proceeds to cancer care and nursing charities.



st michael's  
hospice

# Waggy Winter Wander



## Saturday 16th March

9.30am at Winchelsea Beach

Community Association Hall

Walk off the winter blues with  
your four-legged friend

Sponsored by

**Pet & Animal Feeds**  
**ELDRIDGES • BEAULIEU FARM**  
The Ridge • Hastings • 01424 755300  
[eldridges-pet-animal-feeds.co.uk](http://eldridges-pet-animal-feeds.co.uk)



Scan QR code  
for tickets, or call  
01424 456396

Registered charity number 288462

[stmichaelshospice.com](http://stmichaelshospice.com)



# **St Michael's Hospice**

## **Open Gardens**

Whether it's a quirky 1980s summer house, a koi pond or a bed of tropical plants that you're interested in, there's something for everyone at St Michael's Hospice Open Gardens this summer. Taking place all over Hastings and Rother, private garden owners are opening their gates for all ages to enjoy. Maybe you've got time to spare and would like to spend some time outdoors, soaking up the peace and tranquillity, or maybe you have children who love to explore the outdoors and learn about wildlife? Whatever your motivation, why not pick up an Open Gardens 2024 booklet from the Hospice shops for just £1, to find out more about the gardens opening near you? Alternatively, visit the Hospice website for a list of locations and dates.

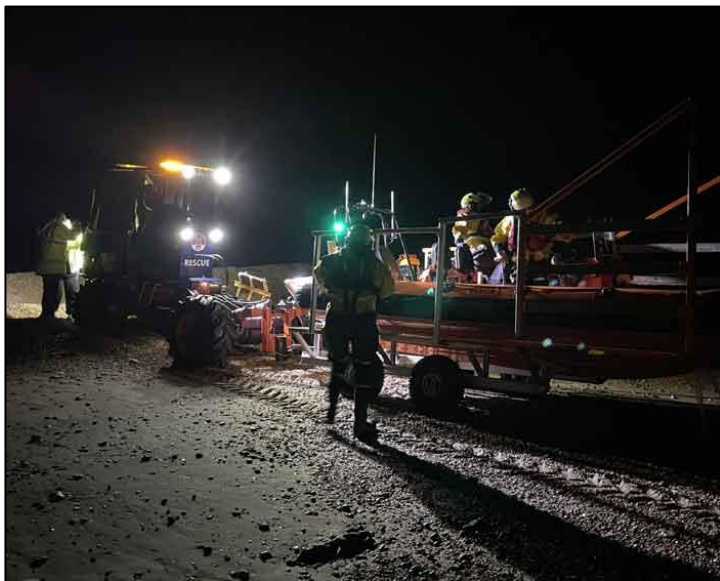
## **Play. Support. Win the St Michael's Hospice Lottery**

Could you be the next top prize winner? St Michael's Hospice runs a weekly Lottery with a top prize of £2,000 every week, plus another 57 weekly cash prizes. By signing up today, you can play an active role in supporting your local Hospice for £1 per entry, per week. Lottery members raised over £510,000 for the Hospice last year, all helping to support the vital work the Hospice does to enable the community of Hastings and Rother to live well with dying death and loss. To sign up, visit [stmichaelsospice.com/lottery](http://stmichaelsospice.com/lottery) or call 01424 456384.

## **Sign up to Gift Aid**

Did you know Gift Aid can be applied to your donations to St Michael's Hospice charity shops? If you are eligible (you must be a UK tax payer) signing up for Gift Aid when you donate your pre-loved goods in store, or at their Donation Centre for them to sell in their shops or via eBay, makes a huge difference. Adding Gift Aid to your donation means the Hospice can claim an extra 25p for every £1 raised through the sale of goods. Next time you're in one of the Hospice's shops or dropping off items at the Donation Centre, please talk to a member of the team about how to sign up.





## **Pett Level Independent Rescue Boat**

We were recently asked by the National Independent Lifeboat Association (NILA) to complete a survey covering various issues. One question explored the number of hours given by our volunteers – something we hadn't really given much thought to. So we decided to work it out and the total was quite astonishing.

Combining regular training, shouts, fundraising, maintenance, administration, community events and the Pett Slip Buoys' gigs – our volunteers collectively dedicate over 12,000 hours of their time per year. That's close to 600 hours that each volunteer gives - in addition to work, family and social commitments.

Our first tasking of 2024 was on 1st February, with a call just before 3am to assist in a multi-agency search for a suspected person in the water at Hastings Pier. When our neighbouring RNLI stations are not on service, PLIRB can be called by HM Coastguard to provide essential support further afield. Despite the late hour we launched in under 20 minutes and conducted co-ordinated searches for close to two hours.

PLIRB volunteers are on call 24 hours a day and 365 days a year (366 this year). In 2023 we were tasked to 25 official

incidents – averaging one every fortnight. However, this figure doesn't include minor first aid or the numerous requests to provide community support.

### **PLIRB needs you**

To ensure we can attend the increasing number of incidents we receive, we are always keen to welcome new team members. If you, a friend or family member would like to join please visit us on Sundays between 9-12 or contact us via Facebook or at [plirbrescue@gmail.com](mailto:plirbrescue@gmail.com). Being part of PLIRB is a fantastic way to learn vital skills and to support your local community. It is also a great way to meet people and become part of a strong and close family. Volunteer roles can include boat crew, beach or base crew or helping organise our administration or fundraising and events. Do come and see us to find out more.

### **The Pett Slip Buoys**

We were very grateful to receive a massively generous donation of audio equipment from Shaun O'Sullivan at SOS Entertainment. The PA system and mics will boost the Buoys enormously – both in volume and professionalism. Thank you to Shaun for his kind and ongoing support. If you would like The Pett Slip Buoys to sing at an event or location, please contact Jo on 07546 320 558.

Thank you to everyone who supports us. To keep in touch, please visit our website <https://plirb.com> and our social media: Facebook [@PettLevelRescueBoat](https://www.facebook.com/PettLevelRescueBoat) and Instagram [@pettlevelindyrescueboat](https://www.instagram.com/pettlevelindyrescueboat).



A day school with Professor Tina Beattie

## **THE ISENHEIM ALTARPIECE AND ITS INFLUENCES ON MODERN ART**



Monday, 4th March  
10.30 am to 3.30 pm

Hub on Rye Hill, Kiln Drive, Rye Foreign,  
TN31 7SQ

£30.00 - concessions available

To find out more and to book, go to [tinabeattie.com](http://tinabeattie.com)

## Winchelsea Church and Town Calendar

### March 2024

Friday 1st	World Day of Prayer - Rye - 10.30 Lent Lunch - Icklesham - 12pm
Saturday 2nd	Church Market at St Thomas's - 10.30am till 12
<b>Sunday 3rd</b>	<b>8am: BCP Holy Communion at Winchelsea</b> <b>9.30am: Parish Eucharist at Pett</b> <b>11am: Parish Eucharist at Winchelsea</b>
Tuesday 5th	Mothers' Prayers - Solstice, Sea Road - 10am
Thursday 7th	Bible Reading - New Inn - 6pm
Friday 8th	Lent Lunch - Rectory - 12.30pm
Saturday 9th	Auction of Promises - New Hall - 7pm
<b>Sunday 10th</b> <i>Mothering Sunday</i>	<b>8.30am: BCP Holy Communion at Pett Level</b> <b>9.30am: 9.30am: Parish Eucharist at Icklesham</b> <b>11am: Parish Eucharist at Winchelsea</b>
Wednesday 13th	Second Wednesday Society - New Hall - 2.30pm
Friday 15th	Literary Society - New Hall - 7pm for 7.30
Saturday 16th	Winchelsea Archaeological Society AGM - New Hall - 11am Winchelsea Arts Concert - St Thomas's - 7.30pm
<b>Sunday 17th</b>	<b>9.30am: Parish Eucharist at Pett</b> <b>11am: Parish Eucharist at Winchelsea</b>
Saturday 23rd	FOAM AGM - Court Hall - 10.30am Winchelsea Film Night - New Hall - 6.30pm for 7.30
<b>Sunday 24th</b> <i>Palm Sunday</i>	<b>11am: Parish Eucharist at Winchelsea</b> <b>5pm: Service with Readings for Palm Sunday at Icklesham</b>
Thursday 28th	<b>6pm: Maundy Thursday Eucharist at Winchelsea</b>
Friday 29th	Fellowship Lunch - WB Community Hall - 12.15pm for 12.30 <b>2pm: Good Friday Meditation at Icklesham</b>
Saturday 30th	Garden Society Spring Show - New Hall - 2pm <b>8pm: Easter Vigil Service of Light at Winchelsea</b>
<b>Sunday 31st</b> <i>Easter</i>	<b>6.30am: Dawn Eucharist on the Beach</b> <b>9.30am: Parish Eucharist at Icklesham</b> <b>11am: Parish Eucharist at Winchelsea</b>
Mon 1st April	Mayoring Ceremony - St Thomas's - 11am Mayor's Drinks Reception for the Town - New Hall - 5pm - 6.30
Sat 6th April	Church Market at St Thomas's - 10.30am till 12
<b>Sun 7th April</b>	<b>8am: BCP Holy Communion at Winchelsea</b> <b>9.30am: Parish Eucharist at Pett</b> <b>11am: Parish Eucharist at Winchelsea</b>

### Further ahead

Sat 20th April	NGS Spring Garden Opening Conservation Society AGM
Sat 27th April	Church Annual Meeting





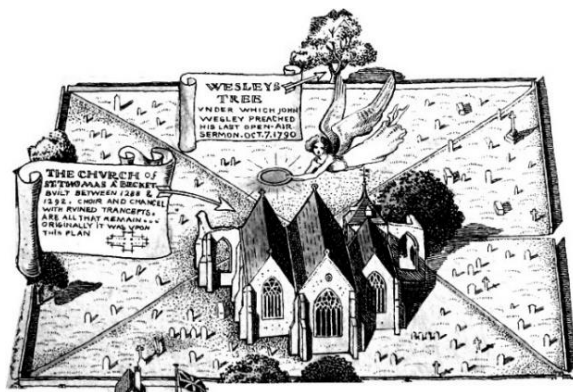
**Please send copy for the April Magazine to  
[ryeview@gmail.com](mailto:ryeview@gmail.com)  
before Tuesday 26th March**

For Winchelsea Beach information go to  
[winchelseabeachcommunityassociation.co.uk](http://winchelseabeachcommunityassociation.co.uk)

For Winchelsea information go to  
[winchelsea.com](http://winchelsea.com)

For more information about the Church go to  
[winchelsea-icklesham-churches.org.uk](http://winchelsea-icklesham-churches.org.uk)

For weekly news from the local area go to  
[ryenews.org.uk](http://ryenews.org.uk)



## **Rector of Winchelsea and Icklesham and Priest in Charge of Pett**

The Revd Jonathan Meyer  
The Rectory, St Thomas Street, Winchelsea TN36 4EB  
01797 226254 [revdjonathan@btinternet.com](mailto:revdjonathan@btinternet.com)  
The Rector's day off is Monday

## **Churchwardens**

Charlotte Beecroft  
Burrin House, North St TN36 4HX  
01797 223159 [ccmburrin@gmail.com](mailto:ccmburrin@gmail.com)

Celia King  
Stargazer, Morlais Place TN36 4LG  
01797 227858 [kingcelia54@gmail.com](mailto:kingcelia54@gmail.com)

## **St Thomas' Primary School**

*Headteacher* Carol Gardiner  
Friars Road TN36 4ED 01797 226479  
[office@st-thomas-winchelsea.e-sussex.sch.uk](mailto:office@st-thomas-winchelsea.e-sussex.sch.uk)

## **Friends of Winchelsea Church**

*Chairman* Ben Chishick  
Tower Cottage, Barrack Square TN36 4EA  
01797 226653 [towercottage@btinternet.com](mailto:towercottage@btinternet.com)

*Treasurer* Stephen King  
Stargazer, Morlais Place TN36 4LG  
01797 227858 [stephenking408@btinternet.com](mailto:stephenking408@btinternet.com)

## **Parish Magazine**

*Editor* David Page  
4 Kent Close TN36 4EX  
01797 226524 [rueview@gmail.com](mailto:rueview@gmail.com)