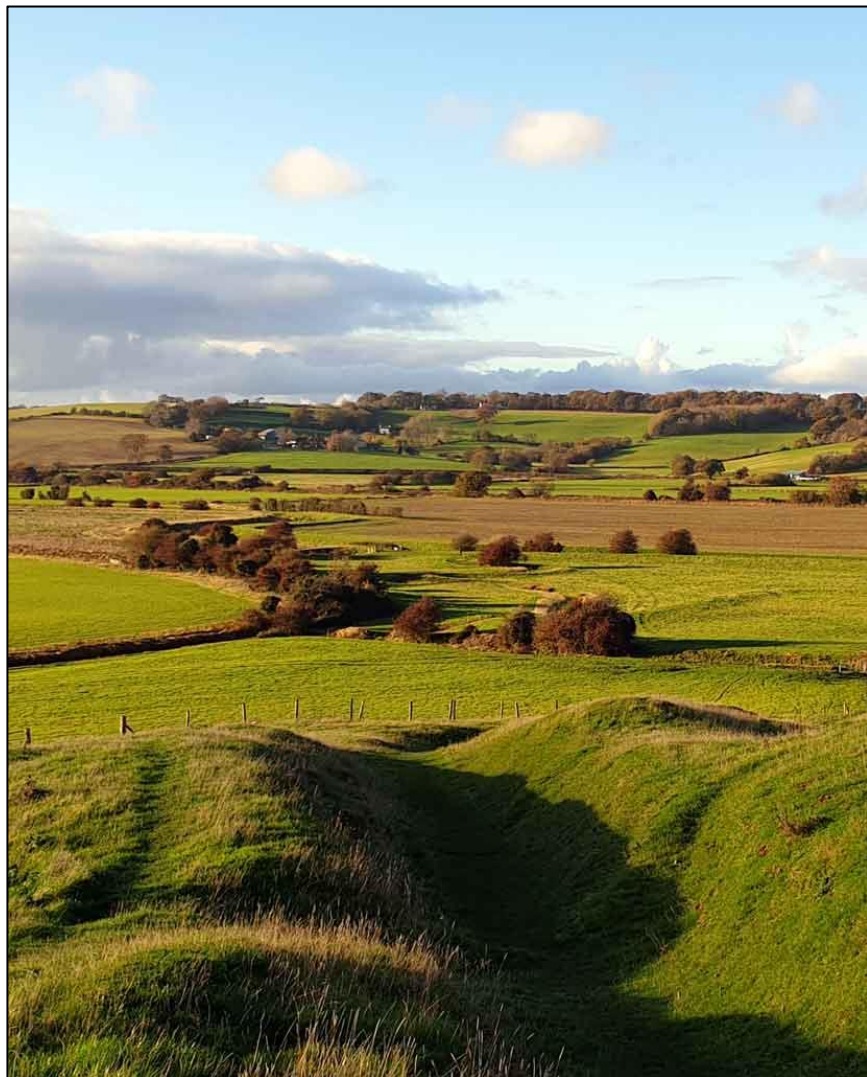


WINCHELSEA PARISH MAGAZINE

1st February 2024





Reflections from the Rectory

Whenever the time comes for me to sit down and write something for the monthly magazine, I tend to find myself looking out of the window. The weather often seems to be a spur to my reflection. As I look out today it is cold and gloomy. It is true that of late we have had some bright and sunny days but today is very January.

For many of us the news will seem cold and gloomy too. It has almost become easier not to mention it as there are so many distressing sources of news in the modern world. On the whole my generation has not had to face huge challenges and we have been blessed in many ways, but others will remember times harder than they are now and the proximity of conflict that we haven't experienced in this country for many years.

Although it is cold and gloomy there is always something to lift our spirits. Many of you will have been amused and delighted by the mouse that each night tidies up the shed and workshop of a retired gentleman in Wales.

But not all stories of hope are trivial. On the local news I saw the delight on the faces of a couple who have just seen the charity, they set up in memory of their son who died in a choking accident, the Oliver Steeper Foundation launch its

service to provide an anti-choking device that is already saving lives.

Many of you will not be aware of Littlegate Farm at Beckley, which helps train and give confidence to young people with learning difficulties and help place them in suitable employment. I am planning to organise a visit to them in the spring. Stories of hope abound.

February marks the season of Candlemas or the Presentation of Christ in the Temple. Another story of hope. It falls on 2nd February although was celebrated in church on 28th January this year. It relates how when Jesus is presented in the Temple, the old man Simeon recognises him as the Messiah and gives us those majestic words of the Nunc Dimittis "Lord now lettest thou thy servant depart in peace."

The Traditional Orthodox Service of Vespers for Candlemas retells the call of Isaiah, who when at prayer in the temple has a burning coal placed in his mouth by a seraph crying, "your guilt is taken away and your sin forgiven". In symbolic language Christ is then likened to a coal of fire resting in the arms of his Mother as in a pair of tongs. As Simeon bends down he says, "Oh pure Lady thou dost carry fire. I'm afraid to take God as a babe in my arms".

The liturgy tells us of the cost of turning to Christ, that the choice is not easy but it is a choice that leads to redemption and restoration. As we give thanks for the good around us, let us pray that these gloomy times may turn to rejoicing.

Jonathan

Bible Reading

Our informal Bible reading will continue on the first Thursday of each month at 6pm in the New Inn Winchelsea. On the 1st February we plan to continue looking at the prophet Hosea. It is a very relaxed gathering and no prior knowledge is required: we always end around 7pm. There has been good attendance; look at it as Book Club with a difference. All welcome. Contact Jonathan for more details or with any questions, revdjonathan@btinternet.com 01797 226254

Living in Love and Faith

Many will be aware of the ongoing debate within the Church of England with regard to same-sex relationships and the question of same-sex marriages and blessings in a church context. Towards the end of the last year the Church of England Synod authorised a series of prayers for same-sex couples under the title of *Prayers of Love and Faith*. This has caused considerable turmoil within the Church of England although many people cannot see anything particularly unusual about praying for the relationship of a loving couple.

These prayers can be used for a same-sex couple in a church service. They have to be part of a service that is scheduled and are not permitted to stand alone or appear to be anything approaching a marriage. We have been asked to seek the views of the PCC in this matter. I'm very pleased to report that the PCC unanimously approved them for use and there was considered to be very little need for debate. If there are any couples who would like to discuss the possibility of including such prayers for them within a service I would be delighted to discuss it.

Lent Course and Lent Lunches

We are planning to hold another joint Lent course with St Mary's Rye. Although it hasn't been confirmed it will probably be based on a little Lent book that I published some years ago based on the film *Les Misérables*. It is called *Another Story Must Begin*. Further details will be announced in due course.

We are planning to hold some Lent Lunches in the benefice and in the parish of Pett. Further details will be published.



New Mayor chosen

With the unanimous agreement of the Freeman of Winchelsea, Peter Cosstick has been chosen to be Mayor for the coming year. Debbie will be Mayoress. The election will be formalised at the Corporation AGM in March and Peter will take office at the Easter Monday Mayoring. He succeeds David Merrifield who will have completed two years in post. Peter served as Deputy Mayor during that time.

Peter became a Freeman of the town in 2019. He ran Rye Heritage Centre for eight years to 2017 and, after moving to Hiham Gardens, was one of the leaders of Winchelsea Guy Fawkes Society. It was at his initiative that the *Discover Winchelsea* visitor guide was created and produced by the Corporation in 2022. A third edition is about to go into production.



Cheque for Demelza

On 9th January the Mayor and Mayoress, David and Sandra Merrifield, attended Demelza House in St Leonards where the Mayoress presented a cheque for £1,500 to Melissa Mungovan, who was very pleased to receive it on behalf of Demelza House.

The net profit raised from the Corporation Italian Evening held on the 25th November was £3,000, half of which was donated to Demelza House and the other half to the Corporation of Winchelsea.

Our thanks go to all those who attended and those who helped make the evening such a success.

David Merrifield
Mayor



Museum 2024

The Court Hall Museum had a very good season in 2023 and attendances are going up. 2024 sees an increase in the number of opening days and also a slight change to hours.

The Museum will open on Good Friday, 29th March and continue until the clocks go back at the end of October. Between those dates, the Museum will be open every day except Monday, from 11.30am until 3.30pm.

Adult visitors pay £3 for entry but admission continues to be free for Winchelsea residents.

**Winchelsea
Garden Society**

Graham Spencer

Our speaker is a plant expert who will talk to us about one of the most popular garden plants, the hardy perennial.

His talk will cover some of his personal favourites, the latest introductions and give advice on cultivation and planting combinations

**The New Hall Winchelsea.
2:30 pm Saturday
24 February 2024**

Admission £5





Millennium+25 Book Project

Jerry Moss writes: Some readers will have taken part in the Winchelsea Millenium Book project and many others will have seen copies circulating within the town, or the copy housed within the Winchelsea Museum. Let me refer you to an article that appeared in the March 2023 edition of the Parish Magazine:

‘To mark the year 2000, communities all-round the country gathered together pictures and information about their residents into modern ‘doomsday’ books. ‘Winchelsea at the Millennium’ was our local version. A team has formed to produce a new book to mark the quarter point of the new century. The aim is to have it ready to buy by the end of 2024 and, of course, everything depends on lots of us being willing to let our pictures and some information about ourselves be gathered for publication.

‘Early in 2024, a letter will come through your door inviting you to participate. Contributions will be edited together and photos added: a keepsake for everyone living here at the quarter-century, and a fascinating record for future generations to enjoy. Desktop publishing has come on by leaps and bounds since 2000 so we can expect this to be a really high-quality full-colour hardback’

Over the last year a committee – yes there are committees for everything in Winchelsea - has been discussing and exploring whether to produce a similar book in colour to mark the intervening years, noting the changes to Winchelsea and its residents (or not) since the publication of the original book. The Millenium +25 years Book, or hopefully some other more apt and catchy title.

To explore the ease, possibilities and practicalities offered by modern desk top publishing, and to gauge the likely appetite in Winchelsea, committee members have been running a small test during the month of January. The residents of Hiham Green were selected as the sample group, although individual participation was entirely a matter of personal choice. Suffice to say, lessons have been learnt from the test and they will be incorporated into any subsequent project.

If the full project proceeds, we are planning to take photographs in May and June when Winchelsea will be looking at its best. It should be noted that the test and any future all-Winchelsea book will be fully compliant with the General Data Protection Regulations (GDPR) legislation of 2018.

Fellowship Lunch

St Richard's Fellowship Lunch will be held on Friday 23rd February in Winchelsea Beach Village Hall at 12.30 for 1 pm.

There is no set charge for the meal but we expect people to donate whatever they think the meal is worth and bearing in mind that all the proceeds go to charity. As everyone is aware, costs have gone up enormously and we therefore have to take more out of the total to cover the expenses than previously, which reflect on the amount we are able to give to the nominated charities.

Please contact Mary Parker on 07927 107678 to book.



FOAM Quiz

The 2024 FOAM Quiz will take place in the New Hall on the evening of Saturday 17th February. 6.30pm for a 7pm start.

Tables for a team of six people are £90 each (£15 per person) and a hot meal will be provided during the break; the bar will be open all night for sale of wine and soft drinks with either cash or card payment.

Payment for tables can be done online this year at ticketsource.co.uk/foam or you can contact Chris Chappell via info@winchelsea-foam.org.uk

You can sign on as a member of FOAM by going to <https://membermojo.co.uk/foam>

Individual membership costs £10 a year or £15 for a household.



Amici della Musica

Following Raphael Wallfisch's fundraising concert for Ukraine in 2022, Winchelsea Arts is delighted to welcome him back with *Amici della Musica*. These outstanding, internationally renowned musicians will present a programme of music by composers born in Bohemia.

Between them, the *Amici* have performed at many of the world's leading concert halls, including Amsterdam's Concertgebouw, Carnegie Hall in New York and the Royal Albert Hall. It is remarkable to have musicians of this calibre performing in Winchelsea - Philippe Graffin *violin*, Elizabeth Wallfisch *viola*, Raphael Wallfisch *cello*, and Piers Lane *piano*.

Mahler Quartettsatz (Piano Quartet in A minor)
Schulhoff Duo, for violin and cello
Smetana Polkas for piano
Dvořák Piano Quartet in E flat

Saturday 16th March at St Thomas's Church
Tickets cost £22 and are available at
winchelsea-arts.org.uk



Making your Luck

In the words of Ernest Hemingway, "You make your own luck". Last Second Wednesday, Jonathan Murphy, who before January was just our friend and neighbour, talked us through his professional life thus far.

He termed as 'luck' meeting his future wife, his Natasha, while filming an advertising campaign in Brazil. But he also recounted the years of hard work, the logistics, complications and frustrations of global travel and the unexpected joy of finding that working with children and animals can actually be quite magical, that all led up to that moment.

If his professional success was measured by the way his films left us spellbound and how we finished off the punchlines of supposedly long forgotten adverts, then his personal success is of course the family that they have created together; so to an extent, Hemingway was right.

At this point I should point out that our little Town is in the unexpected position of having three Natashas. There's 'The Movie' one, 'The Hospitality' one and 'The Yoga' one! All very different and not to be confused. 'The Movie' one, now works alongside her husband as Producer, while Jonathan has found his true metier as Director. If you saw 'My One and Only', you will have seen what a powerful team they are.

Our next meeting is February's second Wednesday, which this year falls on the 14th, Valentine's day. And what is a

traditional Valentine's gift, flowers; so cue Barry Yates, with 'Rye Harbour's Seaside Flowers'.

Anyone who's ever been to the Nature Reserve and that means most of you reading this, will know Barry. He came to Rye Harbour 40 years ago and by the time he retired in April of last year, was it's Manager; another one who made his luck, working as far afield as Shetland, Sutherland and Lancashire, before ending up in Sussex.



Over that time he has written or co-authored several books including 'Seaside Flowers of Rye Harbour Nature Reserve'. Some of the plants that we take for granted on our walks are so rare, that apart from the Reserve, they are only found in one or two other places in Britain.

So what better way to spend Valentine's day, than surrounded with flowers, with your friends and neighbours and with Jane's fabulous tea. 2.30pm at the New Hall. It's a date!

Natasha Robinson
2ndWeds@gmail.com



Second Wednesday Programme 2024

14th February

Rye Harbour's Seaside Flowers - Barry Yates

13th March

The Master Masons - Imogen Corrigan

10th April

Playing the Clown: George Bernard Shaw - Brian Freeland

8th May

Free Water For All - Kathryn Ferry

12th June

My Experience of Being Dyslexic - Mick Bean

10th July

The Art of Forgery - Andrew Ashton

11th September

John Ryan's Cartoons for the Catholic Herald - Isabel Ryan

9th October

Printmaking and Prints - Shirley and Jonathan Meyer

13th November

RAF Fairlight and the Cold War Bunkers - Haydon Luke

11th December

What the Dickens! - Mike Stoneham



Literary Society

Lucas Howard is the speaker at the February meeting of Winchelsea Literary Society. He will be discussing 'The Relationship Between Page Poetry, Performance Poetry and Slam Poetry'

Lucas is a performance poet as well as a published poet. He is based in Hastings and he organises very successful open-mic poetry events in Hastings.

We meet on Friday 16th February at 7 for 7.30pm in the Lower Court Hall. Members free, non-members £5

The talk follows the AGM

literarysoc.winchelsea.secretary@gmail.com



An unusual upside-down rainbow (or circumzenithal arc, to be precise) caused by the refraction of sunlight through ice crystals rather than through raindrops. Photographed over Icklesham by Carole Fuggle

Icklesham Parish Council

Future Meetings

12th Feb 6.15pm - Planning Cttee - Winchelsea Court Hall
26th Feb 6.15pm - Planning Committee followed by Open Spaces Committee - Winchelsea Court Hall
11th Mar 6.15pm - Planning Committee - Winchelsea Beach Community Hall
11th Mar 7.15pm - Full Council - Winchelsea Beach Community Hall
25th Mar 6.15pm – Planning Committee followed by Allotments Committee at Winchelsea Court Hall

2024/25 Budget

The Parish Council approved the 2024/25 budget at the Full Council meeting held on 8th January. Every effort was made to keep the precept to a minimum as we appreciate the financial pressures on all residents at this time. The precept has increased slightly by 3.4% which equates to an increase of 9p per week for an average band D property. The full budget breakdown is available on the Parish Council's website. ickleshampc.org

Sewerage/Flooding

In addition to our continued efforts to find resolutions for residents in Winchelsea Beach suffering from continued flooding and sewerage leaks, the recent rains saw leakages in Laurel Lane, Icklesham with one resident reporting that he was ankle deep in sewerage on his family property. Representations were made to Southern Water who investigated and said that this was due to the pipes in that area being blocked by roots growing into the pipes.

The latest update from Southern Water is that the root ingress in the pipes has been cleared and the pipes have been sealed however the flooding is still occurring. This is because now there is free flow, the Water Treatment Works further down the line gets overloaded. The Clerk has asked for an indication as to whether there are plans for upgrade but she has not received a response so far.

Vacancy Filled

The vacancy in Winchelsea Beach following the resignation of Hugh Sutton, has been filled by the Council co-opting Mr Stephen Haden of Winchelsea Beach and we wish him well in his new role.

Review of parish council charges for recreation grounds and allotments

It was agreed at Full Council not to increase any of our existing charges for allotments or use of recreation ground pitches this year.

Reporting Potholes On Parish Roads

Please report potholes to East Sussex County Council online

<https://live.eastsussexhighways.com/report-problem/report-pothole/1>

or if an emergency telephone **0345 60 80 193**.

Please don't assume someone else has reported – better to have several reports than none.

Speeding On Our Roads

We continue to collect data from our Black Cat monitors and this is sent to this to Sussex Police and the Highways Authority. Sussex Police have said that there is sufficient evidence of regular breaches of the speed limits through Icklesham to warrant an enforcement campaign by the local police force and we are awaiting and chasing deployment.

We are here to represent you and welcome your views on any matter. Please do talk to us or send your reviews/requests to the Council at ickleshampc@hotmail.co.uk or write to PO Box 148, Winchelsea, TN31 9FP



Winchelsea Residents Association

Traffic Calming

Residents will know that East Sussex County Council did not agree to take forward the majority vote for closure of Strand Hill. The Committee are now reviewing all recent research, case studies and evidence to identify an alternative single or set of measures to reduce the continuing fast and aggressive driving through the centre of the town. This will include all the work done leading to the resident vote in July last year and potential new measures. The criteria of cost, effectiveness, conservation area compliance and County Council support remain relevant. We will update members next month.

Black Cat traffic volume and speed data

IPC has continued to use Black Cat monitors at different locations to record traffic volume and speed for one week periods. The most recent data provided by IPC is for 8th - 14th December, which recorded at the junction of St Thomas Street and the High Street, opposite the Little Shop.

The recorder is located where vehicles are turning at the junction to the school or Castle Street or are being slowed because of others doing so. This is where more vehicles are temporarily going slowly, more are changing speed and average speeds are significantly reduced. The sight lines to allow accurate recording are also not ideal. We are also yet to see Black Cat recording of traffic speeds in German Street

and Monks Walk where cars are seen to increase speed significantly. We therefore do not have a complete or accurate picture of current traffic behaviour in the Town. We can state only that 8th - 12th December data shows an average of 1474 vehicles driving through the Town every weekday and that Thursday was the busiest day when 168 vehicles were recorded speeding over the 30 mph limit as they passed the Little Shop. We will continue to provide headlines from the IPC data when it becomes available.

A259 and Local Transport Plan 4

At the request of WRA, Sally-Ann Hart MP raised with the Minister for Transport the need for improvements along the trunk road. We also made representations to the National Highways draft strategy. We must now wait for the completion of the current national reviews in the hope that the need for local action will be recognised. In the meantime, the WRA A259 Group is preparing a leaflet to inform politicians and local government officers the several parts of the road where conditions are unacceptably poor for residents and road users. In parallel with this, we are responding to the County Council's consultation on its Local Transport Plan (LTP4) 2024 to 2050, which includes local roads other than the A259. As with previous plans LTP4 gives scant recognition to the problems faced by rural towns and villages, including speeding and under-provision for safety of pedestrians.

Pavements and Kerbs

After 18 months of waiting and with frequent encouragement from WRA, East Sussex Highways has been out and about in Winchelsea during January measuring up locations for nine new pedestrian dropped kerbs. The contractors plan to complete all work by end of February. This will make a huge difference, easing access to the shop, pub, church and the New Hall. This will be a benefit to residents and our visitors who struggle to negotiate kerbs and often resort to using the road.

Toilets

Rother DC has not yet completed its planned survey which we understand will cover both structure and overall condition. IPC councillors have publicly indicated their willingness, in principle, to take over responsibility for the toilets but this depends on the results of the survey and negotiations between IPC and Rother DC. In the meantime,

the toilet remains open. WRA will continue to encourage Rother DC and IPC to find a long-term solution and keep members updated.

Others Matters Raised by Residents

Several residents have raised a recent problem of dog fouling in the town. Some committee members have been clearing this mess up themselves. It seems to be a single dog and owner. We will keep a look out and hopefully a polite reminder will resolve the problem. winchelseaRA.com



WINCHELSEA FILM NIGHT
Winchelsea Residents Association in conjunction with Winchelsea New Hall

Captain Corelli's Mandolin

Starring:
Nicolas Cage Penelope Cruz

SATURDAY 24th FEBRUARY
6.30 for 7.30 SCREENING
Admission Free
Refreshments, Pay Bar.
Come early, enjoy a drink or two.

NEXT PRESENTATION



Gavin McFadyean

PCC Report

The Parochial Church Council met on 13th January. As well as a discussion regarding *Living in Love and Faith*, these other matters were covered.

The new Treasurer outlined his plans for the 2024 budget to approved later in the month. He also confirmed that he organised a session for online training for members of the PCC, who are effectively trustees of the charity represented by the PCC. The invitation was extended to the trustees of the Friends of Winchelsea Church, as basic governance regarding trustees is common to all trusts. Most members of the PCC agreed to attend and one trustee from the Friends.

The meeting, which took place on 17th January, was concise and helpful reminding us to focus on our principal aim set out in legislation, “to co-operate with the minister in promoting in the parish the whole mission of the Church, pastoral, evangelistic, social and ecumenical.” It was also pointed out that the PCC and Trusts in general should not hold back the use of unrestricted funds but be bold in the pursuit of their aims.

The question of membership was raised at the PCC meeting and we are committed to look for new members who can help take the work of the church forward. If you would like to consider being a member of the PCC please speak to Jonathan who would be delighted to explain what is involved. It need not be very onerous.

It was noted that the essential work on the ruined transepts has now been completed. There were areas of loose masonry and serious ingress of brambles and valerian. This should ensure that such pernicious weeds do not colonise the ruins, although it is likely that major action will need to be taken again within 15/20 years. Minor maintenance should suffice for the present. The disturbance to areas of the churchyard and a particular the garden of remembrance was noted and regretted although it had been unavoidable. The churchyard committee are planning to tidy up the area as soon as the weather improves.

According to the architect there is further work required to the vestry roof and we have an ongoing project to completely replace the lighting and sound system. Further details of both these projects will emerge during the year and we are likely to launch a fundraising campaign to help with this work. A grant of £1,000 was awarded to our Church Primary School for the purchase of RE resources.

Charlotte Beecroft announced that she plans to stand down as churchwarden at the Annual Parochial Church Meeting in April. She has been a churchwarden for seven years and thanks were extended to her for her service over that period.

If anyone would like to raise any points in relation to the PCC do contact Jonathan revdjonathan@btinternet.com or one of the churchwardens, Charlotte Beecroft ccmburrin@gmail.com or Celia King kingcelia54@gmail.com



Hymns: A few random thoughts

Marion Lovell lets off steam: A hymn is usually defined as a song of praise to God or a deity. That's why we sing them in church, but not exclusively. And it has been said that those who sing their praise, pray twice.

So, a hymn consists of two parts, words and music. When someone says they 'like' or 'didn't know' a certain hymn, to what are they referring? I would suggest that foremost they mean the tune. How many verses of any hymn do you actually know? The first? Any more?

So, a hymn is music written for words. Let us consider the words as poems. Some are really beautiful poetry, expressing every emotion imaginable. If you were to read them through, you would make much more sense of them than when you sing. Why-o-why do congregations think that they have to breathe at the end of every line? More often than not the meaning carries over to the next line, and so should the melody.

Look more carefully at the punctuation. You may breathe at a comma; if there isn't one at the end of the line, don't breathe! Find another place. And speaking of breathing,

why don't you take a proper, deep breath before you attempt to sing?

Thinking of how many people are usually in in the congregation in Winchelsea, I shall dare to say that the singing is poor, puny and pretty pathetic: Anglican mumbling. That many people could, and should, make a much louder and more joyful noise to praise the Lord.

Come early enough one Sunday to read through the hymns and reflect on the meaning of the poetry. And if you find an unfamiliar tune, be glad to learn something new. And anyway, by verse three you should have picked it up!



There was an Old Lady of Winchelsea,
Who said, 'If you needle or pin shall see
On the floor of my room, sweep it up with the broom!'
That exhaustive Old Lady of Winchelsea.

Edward Lear
'More Nonsense' 1872

WINCHELSEA BEACH COMMUNITY ASSOCIATION

Registered Charity No. 278165

**A
VALENTINE'S
DANCE
WITH
"GRUNDY"**



ON

**SATURDAY 10TH FEBRUARY 2024
WINCHELSEA BEACH VILLAGE
HALL**

7.30 - 10.30



Bring Your Own Refreshments

Tickets £12.00

Available From Mary - 07927 107678



Winchelsea Wine Society Inaugural Meeting

Following the success of our initial two years of activity based on informal arrangements the Society held its inaugural Meeting on 20 January to set up a new unincorporated association. This means that we will have a committee, bank account, email address and other such joyful things - all with the purpose of carrying forward a further programme of tastings, visits, talks and new ideas on a more secure basis.

33 local residents attended the meeting and became founding members; following which the Society was celebrated with Charles Palmer Classic Cuvee and Rose helpfully introduced by the Charles Palmer team. Numerous other supporters who could not attend have said that they will join the new Society and we shall be in touch with all shortly to complete all the arrangements, and explain the intended benefits of membership. Those who just want to be kept in touch with the events we shall still have the email circulation list.

Meanwhile we are not too busy to get ahead with organising the next event which will be a tasting of wines such as we might have on a Mediterranean Wine Cruise. Sailing is on 8th March at 6.30pm at the New Hall with Skipper Simon Legge at the wheel. Bookings available from now.
brianleonard779@gmail.com



Geoff Sapsford at the New Inn

Geoff Sapsford will be performing at the New Inn on Sunday 18th February from 7pm.

Geoff moved to Hastings some 25 years ago and soon engaged with the local music scene playing in bands around the area. In more recent years Geoff has also developed several duo set ups along with solo outings including several residencies in London.

Geoff performs an eclectic collection of songs covering rock, pop, and country music, peppering sets with some of his own compositions. As a solo artist he particularly enjoys the challenge of dissecting band arrangements and orchestrating them to suit acoustic guitar.

Sets include popular songs of course, but also great songs 'that you won't remember you'd forgotten'!

Would you like afternoon tea at the Ritz? A picnic in a vintage VW camper? Or perhaps some yoga or a bowls taster session? Maybe you would like a cookery masterclass, go stargazing, or birdwatching, help with your cryptic crossword. Or you may prefer to sit back while someone serves you a medieval banquet, or delivers some lovely jams, marmalades or a cake to your home.

All this is possible at our
AUCTION
OF PROMISES

**So come along and bid for
these unique items and raise
money for the New Hall**



**Saturday
March 9th**

7pm Winchelsea New Hall

Tickets £5 (includes Glass of Fizz and Canapés)

Available from Ali Casey ali.casey63@gmail.com

or from Rosemarie Roberts rosiero96@icloud.com (Tel 07941 458628)

New Hall Auction of Promises

The Winchelsea New Hall is holding a fun Auction of Promises on March 9th at 7pm. The idea is that local people and business' offer us their skills and expertise (and goods) and we auction them off to the highest bidder on the night. We are delighted to have Revd Jonathan Meyer as our auctioneer (Jonathan was an auctioneer in his previous life).

Currently our "promises" or lots include afternoon tea at the Ritz, a medieval banquet in a Winchelsea cellar, a trip in a vintage VW camper with afternoon tea and fizz as well as yoga and bowls lessons and a Times cryptic crossword masterclass. We also have cookery sessions, a personalised handmade Christmas stocking, an evening of stargazing, a bird watching walk, cakes, marmalade, mince pies and a year's supply of fresh sourdough bread. The list goes on!

So come along and bid on these unique items. If you are not able to attend you can ask a friend to bid or leave an advance bid with Ali or Rosemarie.

A full auction catalogue listing everything for sale, with guide prices, will be put through every door in the town in mid-February and will also be available in the shop. Payment will be taken on the night (card, bank transfer, cash or cheque) and the date for the delivery of your "promise" will be agreed between the winning bidder and the donor.

If we have not asked you to participate yet, please let us know if there is anything you would be prepared to offer us. It can be as simple as a few hours gardening, a bottle of champagne or a trip out in your car.

Tickets are £5 which includes a glass of fizz and homemade canapes. All profits from the auction will go towards the refurbishment of the gents' toilets in the New Hall (We are already half way through the ladies). Tickets are available from Rosemarie Roberts, rosiero96@icloud.com, 07941 458628, or Ali Casey ali.casey63@gmail.com.

The New Hall 100 Club

The winner for January was number 66. Thanks to John Clarke for selecting our winner this month.



Iain Kerr 1934 - 2024

Winchelsea will best remember Iain playing the piano at Church Market, arranging music for Winchelsea Singers and giving musical direction to the famous Icklesham pantomimes. He died on 21st January, a month short of his 90th birthday and exactly two months after Ann.

Iain made his first professional appearance in New Zealand on radio at the age of four and toured internationally in the 70s with his partner Roy Cowen and their show *Gilbert and Sullivan Go Kosher* which they also put on at the Edinburgh Festival and at the London Coliseum. After Roy died, Iain began a collaboration with Ann Rachlin on *Fun With Music* and was also resident pianist and cabaret performer at the Mayfair Hotel for 25 years.

Iain was a consummate musician, a talented writer, performer, teller of stories, and a comedian with a wicked sense of humour. He loved life and challenged many boundaries; he was out and proud when it was against the law. Ann and Iain were an inseparable and creative presence on the Winchelsea and Icklesham scene and leave us with an abundance of fond memories.

kerroy.com



Rye Food Bank

You can find out more about Rye Food Bank and ways you can offer support, here: ryefoodbank.com

Cam will be hors de combat for a period while he takes possession of a new knee.

However, for the time being Martin Owen will be standing in for Cam and will be doing the next monthly doorstep collection from those of you who are regular donors on the morning of Tuesday 20th February.

If you wish to add yourself to the list of donors, please let Martin know by email mojowen@outlook.com or phone 01797 226968.



Bittern at Rye Harbour Nature Reserve Barry Yates

Rye Harbour Nature Reserve in February

Saturday 3rd (10am – 2:30pm) - Wildlife Rangers

Our monthly group for teenagers interested in wildlife, taking part in practical conservation, or those wanting to volunteer for their DofE awards. Suitable for ages 12-16 years. Bring a packed lunch. Parents do not accompany.

Meet at Rye Harbour village car park, TN31 7TY.

Free, but booking essential.

ryeharbourlearning@sussexwt.org.uk

Wednesday 7th, 14th, 21st & 28th (9:45am – 11:15am) - Weekly Wednesday Wellbeing Walk

Enjoy the outdoors with a gentle, sociable, morning walk across the reserve. Meet at the public toilets in Rye Harbour village, TN31 7TT. Booking not required, but suitable footwear and clothing is essential.

Saturday 10th (8:30am – 4pm) - Friends' Open Day

Meet the Friends of Rye Harbour, starting with a guided walk from the car park at 8:30. Stalls and craft items in the Discovery Centre from 10am – 4pm, 833 Lottery draw and a chance to meet other Friends and committee members.

All welcome. Meet at Rye Harbour village car park, TN3 7TY. No booking necessary.

**Saturday 10th (1:30pm – 3pm) -
Friends' Talk: Out of Hours at RHNR**

An illustrated talk by Colin Page about Rye Harbour Nature Reserve when seen at dawn, dusk and after dark. Suitable for adults. Free for Friends members, non-members a suggested donation of £5. Meet at Rye Harbour Discovery Centre, TN31 7FW. Booking essential.

**Wednesday 14th (10:15am – 1pm)
Beginning Birdwatching in Winter**

Join us for a circular walk of approx. 3km as we visit a few of the hides for excellent views of the birds of Rye Harbour Nature Reserve. Binoculars recommended. Suitable for adults. Meet at Rye Harbour Discovery Centre, TN31 7FW. Booking essential, email jamesduncan@sussexwt.org.uk. Donations appreciated.

Sunday 25th (10am – 3pm) - Guide in a Hide

Drop into the Gooders Hide between the car park and the sea, where there will be guides stationed throughout the day to show you the birds. Binoculars, telescopes and spotter sheets available for you to use. Suitable for all. A 400m walk south towards the sea from Rye Harbour car park, TN31 7TY. No booking necessary.

To find out more about any of these events,
or to book a place, go to:

rye.sussexwildlifetrust.org.uk/discovery-centre/events



St Michael's Hospice

An Evening with Jo Brand and Friends

St Michael's Hospice is thrilled to announce that the hilarious Jo Brand, the beloved Hastings-born comedy sensation, is set to grace the stage for an unforgettable evening on Sunday 21st April. An Evening with Jo Brand and Friends promises to be an unmissable event, all in support of the invaluable work St Michael's Hospice does to support the community of Hastings and Rother with dying, death and loss.

Hurry because seats are very limited, so don't miss out! Tickets are on sale from the White Rock Theatre Box Office, visit whiterocktheatre.org.uk to book.

Hospices to Holland

St Michael's Hospice and St Wilfrid's Hospice (Eastbourne) are teaming up on this exciting ride along the picturesque south coast before crossing the channel to make their way through France, Belgium, and Holland. Expect to pedal past stunning beaches, picturesque waterways, and idyllic tree-lined canals adorned with charming windmills.

To reserve your spot, please visit the Hospices to Holland website www.hospicestoholland.co.uk or speak to the team at fundraising@stmichaels hospice.com or by calling 01424 456396.



GATHER YOUR FRIENDS FOR A FUN NIGHT OUT!

QUIZ NIGHT

Form a team of 6 and get ready to battle it out for a host of wonderful prizes!

Friday 1st March | Doors open 7:15 PM
The Tudor Room at The Mermaid Inn, Rye

Tickets £5 (including snacks)

Licensed bar | Raffle

To book email fundraising@ryehospital.org.uk
or call 01797 228842



In aid of Rye, Winchelsea & District Memorial Hospital Ltd

Charity no. 1014232 Company no. 02740665

fundraising@ryehospital.org.uk



Making a donation for the magazine

If you've valued the magazine this past year and would be willing to mark your appreciation with a donation to church funds of, say, £5 or £10 we would be very grateful.

You can either donate online at
justgiving.com/fundraising/winchelseapec

or you can put cash or a cheque in the black box at the back of St Thomas's or use the contactless payment machine. If you use a cheque, please make it payable to 'PCC Winchelsea'. Thank you very much.

The digital magazine is available free to anyone who would like to receive it. It currently goes out to 340 email addresses and is also posted on winchelsea.com.

Five people who can't get it digitally receive a monthly printed digest of the main items.

Thank you!
David Page, Editor

Winchelsea Church and Town Calendar

February 2024

Saturday 3rd	Church Market at St Thomas's - 10.30am till 12
Sunday 4th	8am: BCP Holy Communion at Winchelsea 9.30am: Parish Eucharist at Pett 11am: Parish Eucharist at Winchelsea
Tuesday 6th	Mothers' Prayers - Solstice, Sea Road - 10am
Saturday 10th	Valentine's Dance - WB Community Hall - 7.30pm
Sunday 11th	8.30am: BCP Holy Communion at Pett Level 9.30am: 9.30am: Parish Eucharist at Icklesham 11am: Parish Eucharist at Winchelsea
Wednesday 14th	Second Wednesday Society - New Hall - 2.30pm 6pm: Ash Wednesday Service at Winchelsea
Friday 16th	Literary Society - Court Hall - 7pm for 7.30
Saturday 17th	FOAM Quiz - New Hall - 6.30pm for 7
Sunday 18th <i>First Sunday of Lent</i>	9.30am: Parish Eucharist at Pett 11am: Parish Eucharist at Winchelsea
Tuesday 20th	Garden Society Trip to RHS Wisley
Friday 23rd	Fellowship Lunch - WB Community Hall - 12.30 for 1pm
Saturday 24th	Garden Society Winter Lecture - New Hall - 2.30pm Winchelsea Film Night - New Hall - 6.30pm for 7.30
Sunday 25th	9.30am: Parish Communion at Icklesham 11am: Parish Eucharist at Winchelsea
Sat 2nd March	Church Market at St Thomas's - 10.30am till 12
Sun 3rd March	8am: BCP Holy Communion at Winchelsea 9.30am: Parish Eucharist at Pett 11am: Parish Eucharist at Winchelsea

Further ahead

Sat 9th March	New Hall Auction of Promises
Sat 16th March	Winchelsea Arts Concert
Sat 30th March	Garden Society Spring Show
Sun 31st March	Easter
Mon 1st April	Winchelsea Mayoring Ceremony



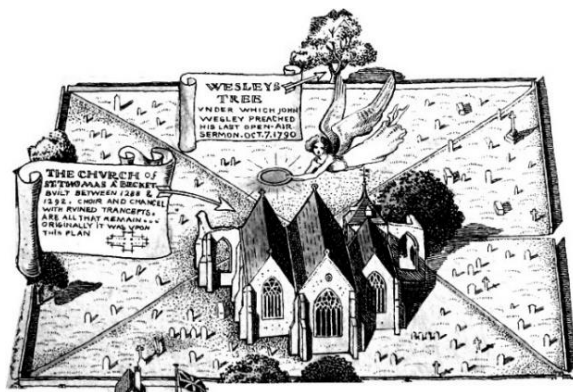
**Please send copy for the March Magazine to
ryeview@gmail.com
before Thursday 29th February**

For Winchelsea Beach information go to
winchelseabeachcommunityassociation.co.uk

For Winchelsea information go to
winchelsea.com

For more information about the Church go to
winchelsea-icklesham-churches.org.uk

For weekly news from the local area go to
ryenews.org.uk



Rector of Winchelsea and Icklesham and Priest in Charge of Pett

The Revd Jonathan Meyer
 The Rectory, St Thomas Street, Winchelsea TN36 4EB
 01797 226254 revdjonathan@btinternet.com
 The Rector's day off is Monday

Churchwardens

Charlotte Beecroft
 Burrin House, North St TN36 4HX
 01797 223159 ccmburrin@gmail.com
 Celia King
 Stargazer, Morlais Place TN36 4LG
 01797 227858 kingcelia54@gmail.com

St Thomas' Primary School

Headteacher Carol Gardiner
 Friars Road TN36 4ED 01797 226479
office@st-thomas-winchelsea.e-sussex.sch.uk

Friends of Winchelsea Church

Chairman Ben Chishick
 Tower Cottage, Barrack Square TN36 4EA
 01797 226653 towercottage@btinternet.com
Treasurer Stephen King
 Stargazer, Morlais Place TN36 4LG
 01797 227858 stephenking408@btinternet.com

Parish Magazine

Editor David Page
 4 Kent Close TN36 4EX
 01797 226524 rueview@gmail.com