

WINCHELSEA PARISH MAGAZINE

1st October 2023





Farewell to Anthea

In 2015, after Winchelsea Post Office closed, a part-time facility opened up in the Court Hall. The Corporation offered the premises free of charge and the service was operated by an arrangement between the Post Office and McColl's (later taken over by Morrisons), subsidised from government funds designed to ensure postal facilities continued to be available in small communities.

For the past seven years, Anthea Dabolins has run this, opening up twice a week. Bringing the Post Office to three other communities as well as Winchelsea, she has driven to us with all her stock and equipment in the back of the car, setting it all up with the help of a local team of volunteers.

Morrisons have decided to discontinue the service and Anthea retired at the end of September. Local people gathered to say farewell on her last day and the Mayor presented Anthea with a certificate of appreciation.

An informal lunch organised by residents is being held at the New Inn on Saturday 7th October at 12.30 to celebrate Anthea's loyal service and retirement. If you would like to attend, please let Peter Cosstick know by Wednesday 4th October to help manage numbers - 07867 888670.

The Post Office will be conducting a review of the service over the next three months, but at the moment it looks unlikely that the Winchelsea facility will resume.



Writers of Romney Marsh and Winchelsea

Alan Judd is the speaker at Literary Society on Friday 20th October. The meeting will be held at the Court Hall at 7pm for 7.30. Free admission for members, £5 for non-members.

Alan Judd has written two biographies and sixteen novels, winning the Guardian fiction award and the Royal Society of Literature prize for novels and the Heinemann award for his biography of Winchelsea author Ford Madox Ford. His authorised biography of Mansfield Cumming, the founder of MI6, was shortlisted for the Westminster Prize. Two of his novels have been filmed by the BBC and a third, *The Kaiser's Last Kiss*, is a feature film (entitled *The Exception*) starring Christopher Plummer and Lily James. He is co-author, with David Crane, of a collection of character sketches of the First World War poets.

His two most recent books are *A Fine Madness*, a novel about Christopher Marlowe, and *Queen & Country*, the sixth in his series of modern spy novels featuring Charles Thoroughgood. He is also the author of *Shakespeare's Sword*, a novel set in Winchelsea and Rye. He has reviewed for most major papers, was a regular columnist on the Daily Telegraph and Spectator and is currently the motoring correspondent for the Oldie.

literarysoc.winchelsea.secretary@gmail.com



Folklore in Kent

October's speaker at Second Wednesday is Sue Duckworth. She gave the society a very engaging talk on Zoom during lockdown on hopping in Kent. The conversation among the audience continued on Zoom for a long time, reminiscing and exchanging stories. This time Sue visits Winchelsea to talk about Kentish folklore.

2.30pm on 11th October in the New Hall. Annual membership £15, visitors £5, homemade tea £2.

Chris Viner's talk, 'Napoleon and the Jews' will be on 8th November.

WINCHELSEA RESIDENTS' ASSOCIATION

AGM

SATURDAY 14th OCTOBER

11.00am – 12.30

WINCHELSEA RESIDENTS' ASSOCIATION

Are holding their Annual General Meeting

WINCHELSEA NEW HALL

SATURDAY 14th October at 11am – 12.30

(REFRESHMENTS AVAILABLE)

We hope you can join us...

...for further information - info@winchelseaRA.com



info@winchelseaRA.com

winchelseaRA.com



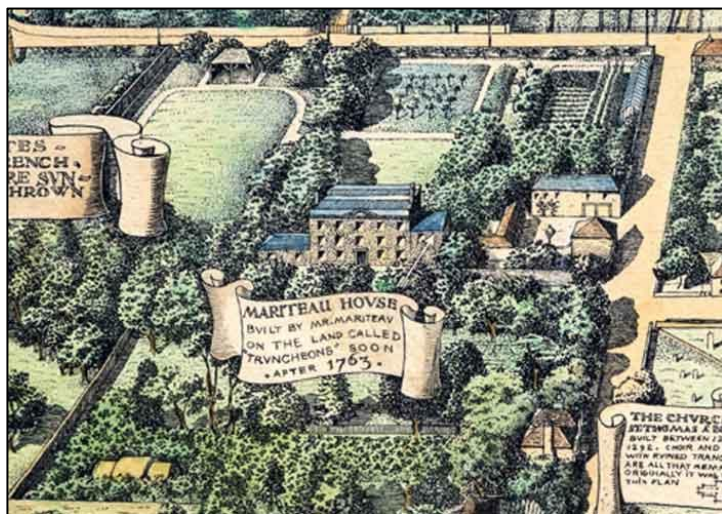
Court Hall Interpretation Panels

A new interpretation board was put in place in the Court Hall garden last month. Designed and illustrated by Jim Kay, the three panels describe 'Winchelsea Court Hall and Prison', 'The Warship 'Anne'' and 'The Winchelsea Story'.

The board is fixed to the wall of what was once the small prison exercise yard, and removing the jasmine that used to cover it has revealed the graffiti scratched by the prisoners in the brickwork. Timbers and a canon from the 'Anne' are displayed nearby.

The Museum will be open from 11.30am to 3.30pm Wednesdays to Sundays until the end of October.





Charles Thomas

Richard Thomas writes, My uncle, Charles Hathaway Thomas, drew the “Winchelsea Town Map” a century ago. It took him two years, from 1923 to 1925, as it was fiddly detailed work, which he got on with only intermittently when he was down from London, staying at his parents’ weekend cottage on the corner of Friars’ Road, called then, as now, *White Cottage*.

And he almost gave up when he spilt the ink, just below the Mariteau House scroll. You can still see where he scraped the blot away on the original drawing, which hangs in my sister’s flat in Gloucester. The engraver did a good job in disguising it when he prepared the copper plate.

Charles was born in 1899. He trained as an artist at the Slade, and in acting and directing at RADA. He was called up towards the end of the First World War, and had been in the trenches only a few weeks when he was gassed and taken prisoner. When, after the armistice, he was released, he was an emaciated wreck, having, like most other Allied POWs, been starved during the final months of the war.

He made a good recovery, but for the rest of his life suffered from a “weak chest”. This did not prevent him from indulging in his great passion – week-long walks all over the country, from pub to pub, sometimes with friends but often

alone, sketching, and also singing folk songs to his own accompaniment on mandolin. One wonders what the other customers in the pubs can have made of this rather precious young man, as he – literally – sang for his supper. In London, when in the company of his more sophisticated friends, the mandolin was dropped in favour of a lute.

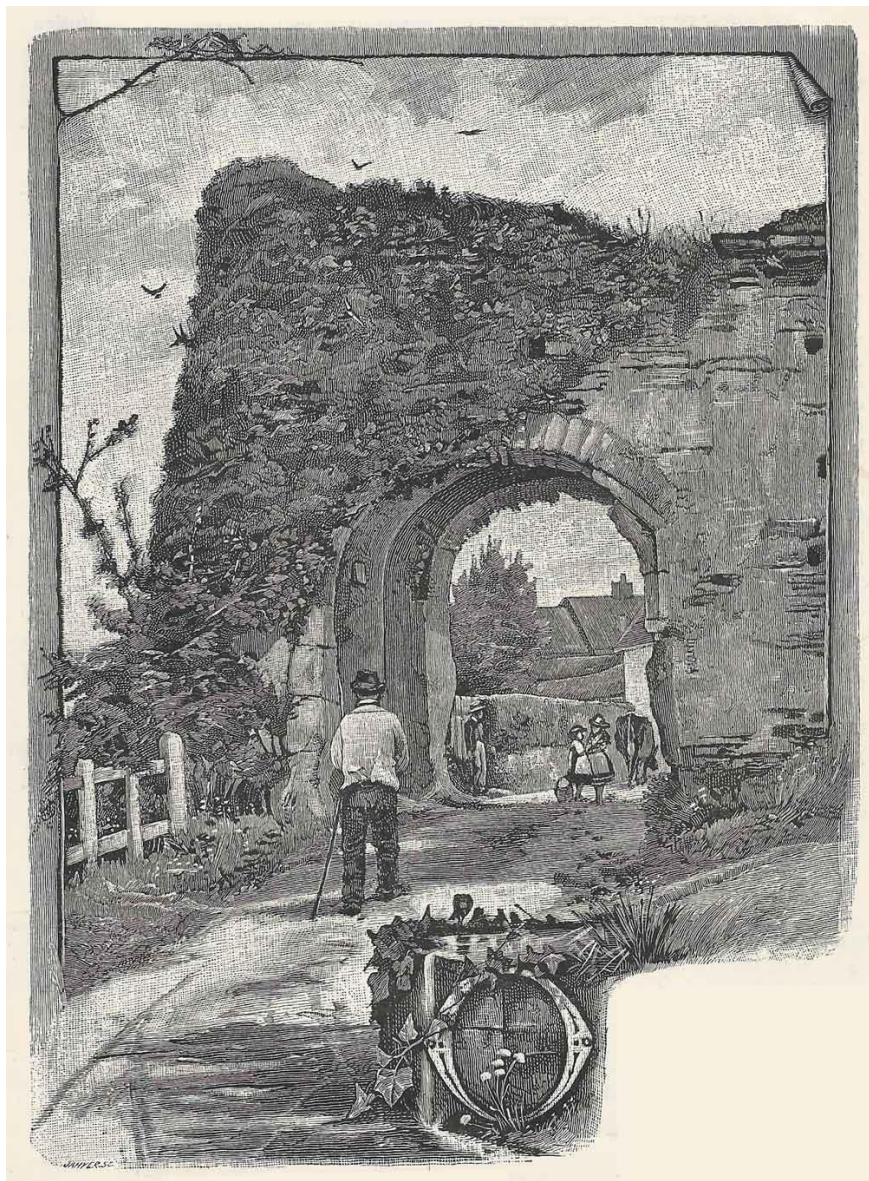
Charles worked during the 1920s and 30s as a stage manager, set designer and scene painter, and occasional director, at the two leading avant-garde theatres of the day, the Lyric Hammersmith, under Sir Nigel Playfair, and the Liverpool Rep. At the outbreak of war in 1939 he enlisted as a camouflage painter. After the war he changed direction and became the Yorkshire West Riding education authority's director of drama, before ending up, in the 1950s, as the librarian at the British Drama League.

During his time with the West Riding education authority and the British Drama League Charles was much in demand as a drama adjudicator, judging performances at drama festivals all over the UK and even abroad, in the USA, Canada and East Africa. In this capacity he was an unlikely pioneer passenger of the jet age, flying to and from Southern Rhodesia (now Zimbabwe) by Comet, the world's first jetliner, in its inaugural year.

In 1958 the 1918 gassing caught up with him, and he died from pneumonia, aged only 59.

Full-size colour reproductions of Charles Thomas's map are available to buy at Winchelsea Museum for £15.

[Click here to see the whole map](#)



Pipewell Gate in the late nineteenth century



Winchelsea Summer Fete Results

The August Fete, run by Winchelsea Cricket Club, was a great success and over £5,000 was raised. The Club asked FOAM, St Thomas's School, New Hall and Garden Society to run their own stalls and keep the income made. This was an amount in excess of £2,850.

The Cricket Club are donating to several local charities:

Rye Food Bank - £300

St John Ambulance - £200

Pett Level Independent Rescue Boat - £200

Rye Sea Cadets - £150

Raystede Animal Centre - £150

New Hall - £50 for use of electricity plus a £50 donation

Rye Cricket Club - £50

Winchelsea Cricket Club - £1,000

A small amount will be kept back to help with next year's expenses. The Cricket Club will run next year's Fete, but will need plenty of helpers on the day. Keep the second Saturday in August free in your diaries.



Poppy Appeal 2023

This year's Poppy Appeal will run from Thursday 26th October to Sunday 12th November. At the time of going to press, it is intended that donation tins and trays containing poppies and pins will be available at the usual locations in Winchelsea and Winchelsea Beach, namely The Little Shop, The New Inn, Winchelsea Lodge, the Co-op, Sutton's Shop, The Ship Inn/Jamie's Butchers and Winchelsea Sands and these will be confirmed in the next issue of this magazine.

As ever, donations will be gratefully accepted by the Royal British Legion (RBL) with gift aid being much appreciated. Donations can also be made electronically to the RBL, Sort Code 30-11-75, Account Number 01937121 at any time. It would be appreciated if the payment reference SFF24 could be used, as that will credit the gift to the Winchelsea area, but this is not essential. They can also be made by texting POPPY2, POPPY5, or POPPY10 (to donate £2, £5 or £10, for example) to 70545.

It is planned that a stock of gift aid envelopes will be available at the back of the Church for cash or cheques (made payable to RBL Poppy Appeal) and these should be placed in the Black Box in the Church, or in any box at the above locations, on or before 12th November. In addition, if you have any difficulty in getting hold of any remembrance material you need, in making a donation, or have any questions about this year's appeal, please call John Rodley on 01797 223458.

Winchelsea

Italian Evening

New Hall, Winchelsea TN36 4AA
Saturday 25th November 2023 - 7 for 7.30p.m.

Raffle

Opera
Singers

Cash Bar

3 Course
Italian Meal

Prosecco on
arrival



Tickets £40 available from the Little Shop, High Street, Winchelsea
Raffle in support of the Mayor and Mayoress' Charities
The Corporation of Winchelsea and Demelza House Children's Hospice



Winchelsea Arts on 7th October

October's concert will be given by the Rautio Piano Trio, Jane Gordon *violin*, Victoria Simonsen *cello* and Jan Rautio *piano*. Saturday 7th at 7.30pm.

The Rautio Trio have emerged as one of today's finest chamber ensembles, known for their refined and powerfully expressive performances. Performing 18th and 19th century repertoire on both modern and period instruments, they have developed a fresh and engaging approach to historical masterworks. In 2022 they launched the first volume of the complete cycle of Beethoven Piano Trios, receiving 5 stars in the BBC Music Magazine and glowing reviews in the Gramophone and Early Music Review.

Bridge : Phantasie Trio in C minor
Beethoven : Piano Trio in E flat Op.70 no.2
Dvořák : Trio No.4 in E minor (Dumky)

Tickets online from winchelsea-arts.org.uk
and at the door. £22 (free for under 18s)

If you haven't got it in your diary yet, note the date of this year's Christmas Concert by Candlelight: Tuesday 19th December. Last year, Marcio da Silva and the Ensemble OrQUESTA brought us a Venetian Christmas. This year they bring Christmas music from Germany.



Conception

The Clair/Obscur theatre company brought their play, 'SOE' about Vera Atkins to Winchelsea last summer to considerable acclaim. They return on 13th October with a new production, 'Conception: Mary Shelley, The Making of a Monster'. The director of the show is *The Archers'* Lucy Speed, and the company were featured on Radio Four's *Woman's Hour* last weekend. The play has just been published by Methuen & Co and has contributions on Mary Shelley from international academics and experts. Copies will be on sale at the show.

October 1840. Gothic writer, Mary Shelley's first pilgrimage back to Europe in twenty years in defiance of her father-in-law's wishes. Has Mary the courage to confront the past as she returns to Lake Geneva, her birthplace as a writer and of her most famous novel *Frankenstein*? And will she find the solace she seeks among Villa Diodati's rooms, terraces and vineyards where she, Percy Shelly and Byron spent that unforgettable summer?

Read more about the play at clairobscur.co.uk
Tickets are available at wegottickets.com

Winchelsea New Hall on Friday 13th October at 7.30 pm.

**Winchelsea
Garden Society**

An afternoon with

**Mig
Kimpton**

The creative floral designer
will share his love of flowers
and demonstrate his art

The New Hall Winchelsea.
2:30 pm Saturday
21 October 2023

Admission **£5** including a
raffle ticket

A floral arrangement will be
awarded to 3 winning raffle
ticket holders





Rounding off the cricketing year

A disappointing 2023 season was rounded off, fittingly, with more disappointment in the September fixtures.

A forgettable afternoon at Beckley, and a spirited one at Mountfield (including a stunning slip-catch from John Josiah) both ended in defeat, but earlier in the month, at Rye, a splendid match was played to honour one of our own. Peter Matthews had been a stalwart of the club and a well-known figure in East Sussex cricket for 60 years. The game, between WCC and a 'Pete Matthews XI' ended in an exciting and honourable draw and Pete would have loved it.

However poor the members may feel the season has been, comfort (of sorts) should be taken from the knowledge that things have been far worse. In 1884 Winchelsea played a two innings match against Hastings Football Club. Winchelsea's first innings saw our brave boys dismissed for a modest 9 runs. In reply, HFC scored 41. Still all to play for, surely? No. In the second innings Winchelsea were ALL OUT for just 1 run and HFC won by an innings and 31 runs. We may still be losing, but not nearly so badly. Many thanks to Mr. Josiah for the information.

Our grateful thanks, too, to the Vice-Presidents for their continued support, to the New Hall for the fantastic facilities. and for those who simply come along to watch. You are all much appreciated. See you in 2024!

Mike Stoneham



Burgundy Tasting

The next Winchelsea Wine Society tasting will take place in the New Hall at 6.30pm on Friday 6th October.

As a special venture more into premium wine territory, this tasting will focus on wines from Burgundy - three white (Chardonnay) and three red (Pinot Noir), all from the same very good 2019 vintage. Picking wines from the same grape and broadly same region will allow us to make some good, coherent comparisons within each wine flight.

This step up from our normal focus on good and interesting but reasonably priced wines will enable us to climb a quality ladder from good (£15 per bottle e.g. Cote Chalonnaise) to very good (£25 per bottle) to excellent (£50 per bottle e.g. a Single Vineyard Meursault or 1er Cru Nuits St Georges). Do the quality cues offered by each of these wines justify their prices? Is the difference in quality discernible? Hopefully we will be able to find the answers to these questions and more, whilst enjoying what promises to be some really good wines from the seminal Burgundy region which many of us would not normally buy for ourselves.

Simon Legge will 'compere' this tasting, which will cost £20 per head. All residents are welcome to attend and an wishing to do so should please contact brianleonard779@gmail.com.



WINCHELSEA FILM NIGHT

Winchelsea Residents Association in conjunction with Winchelsea New Hall

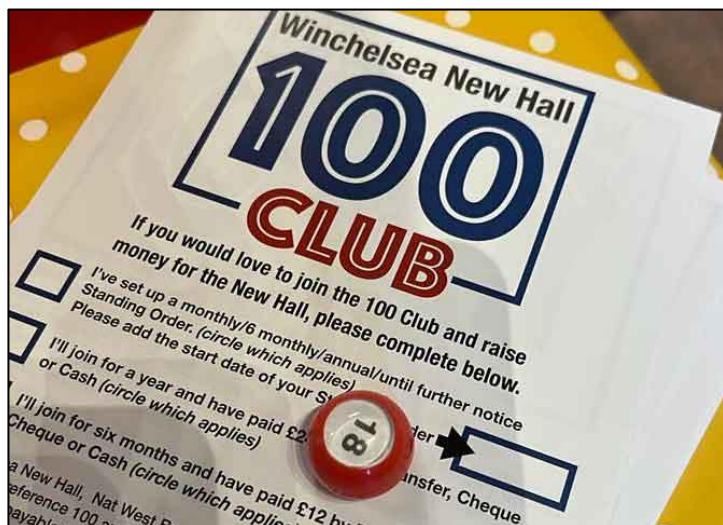
Fried Green
TOMATOES
— AT THE —
WHISTLE STOP
CAFE

SATURDAY 14th OCTOBER 6.30 for 7.30 SCREENING

Admission Free

Refreshments, Pay Bar.

Come early, enjoy a drink or two.



Drawing the First Winner

On Saturday 19th August at Film Night in the New Hall, we asked the Mayor, David Merrifield, to draw our first winner of the Winchelsea New Hall 100 Club. David spun the balls and selected ball number 18. Our first monthly winner was Andrew Cripps who was the lucky recipient of £100. Well done Andrew!

Half of all the revenue raised from the 100 Club is going towards the refurbishment of the ladies and gents toilets. The other half goes in prize money for our lucky monthly winners.

We will be continuing to sell 'numbers' throughout the year to enable us to raise more revenue (and further increase our monthly cash prize). Please sign up if you haven't done so already. £12 per six months or £24 annually will buy a number in the monthly draw, which will take place on Saturday Film Night.

Sign up at Film Night or please email or call
Ali 07926 128737, ali.casey63@gmail.com
Rosemarie 07941 458628, rosiero96@icloud.com



New Hall AGM

A lively audience of Winchelsea residents attended the New Hall AGM on Saturday 30th September to hear reports and ask questions to the Committee.

The Chair, Ali Casey, reported progress on several fronts, the highlights are the popular monthly Film Night co-hosted with the Winchelsea Residents Association and the Hall's new funding initiative the 100 Club which has so far raised over £1000 towards our refurbishment projects

The Treasurer, Rosemarie Roberts, talked through the last year's accounts where the Hall made significant improvements and ended the year with a small revenue deficit of less than £180.

The Secretary, Rob Mortimer, described our fabric improvements and projects for the coming year - the refurbishment of the Ladies WCs and our success in attracting grant aid for a planned start in December.

The committee was sad that Laurie Rutman steps down at the meeting. He has provided valuable assistance with reviewing documents from a legal perspective and his work has been appreciated. The remaining members of the committee, including Graham Large and Sergio Ribecchi were prepared to stand again for the coming year, which was supported by those attending. John Davidson was supported by the audience when he thanked the committee for their work.

A decorative border of small pumpkins with carved faces surrounds the text.

WINCHELSEA BEACH COMMUNITY ASSOCIATION
Registered Charity No. 278165

***HALLOWEEN DANCE
TO GRUNDY
WITH FISH & CHIP
SUPPER.***

BRING YOUR OWN DRINKS & GLASSES

***SATURDAY OCTOBER 28th
7.30 PM***

***AT WINCHELSEA BEACH
COMMUNITY HALL***

***TICKETS £18 EACH
IN ADVANCE***

***FROM LYNNE 01797 226614
OR***

JACKY 01797 229163

***NO TICKETS SOLD AT THE
DOOR***



What's happening in Icklesham Parish

Winchelsea Traffic Calming

The results of the public consultation were considered by Full Council on 11th September and bearing in mind the advice received from East Sussex Highways that it needed 80% of the vote to proceed, the Parish Council had no option but to support ESH's decision as 61% was not a high enough percentage to demonstrate "significant local support" for the scheme.

The Parish Council have spent an enormous amount of time on this project for the Traffic Calming Group over the years and approximately £7,000 in fees to GTA and realise that this will be disappointing for some residents, however it's a democratic decision as the turnout to vote was low and only 61% were in favour.

IPC have agreed to fund signs warning drivers they are entering an area with a school and St. Thomas's School have been contacted to work up some designs. The Parish Council are also in contact with the Road Safety Team at East Sussex County Council regarding the installation of new school warning signs.

Winchelsea Beach Sewerage and Flooding Issues

The Parish Council held a public meeting with Southern Water on Saturday 23rd September regarding the ongoing

flooding and sewerage issues in Winchelsea. Unfortunately attendance was lower than previous meetings. Southern Water informed residents of the works that have been carried out since the last meeting held in March 2022 and what works are planned for the future.

The Parish Council are hopeful that the works carried out by Southern Water to date will improve the situation for our Winchelsea Beach residents this winter. Southern Water are currently working on a direct contact for residents in Winchelsea Beach, together with a unique reference. The Clerk will publish these details once they are available.

Winchelsea Beach Bus Shelter

The Parish Council have been working on installing a new bus shelter in Winchelsea Beach for many years. Unfortunately, the project has been put on hold for various things such as Covid and also the new East Sussex Highways contractor handover. The Parish Council now have a plan in place and are in a position to apply for funding. The Parish Council are holding a drop in session for residents to come and look at the plans and to vote for their favoured bus shelter on Wednesday 11th October 5 pm to 8 pm at Winchelsea Beach Community Hall.

Car Park hours

As we come into winter Rye Harbour Car Park will be closed overnight from Monday 2nd October. The car park will be open from 6.30 am and closed at 8 pm each day. Icklesham Recreation Ground Car Park is also closed overnight. The car park is open during daylight hours only.

Upcoming meetings

9th October: Planning and Allotments Committee

– 6.15 pm & 7.15 pm at Winchelsea Court Hall

23rd October Planning

– 6.15pm at Winchelsea Court Hall

Agendas for meetings are displayed on the Parish notice boards and website a week before the meeting. If residents want to raise any issues or concerns, please contact the Clerk, Jenner Sands on ickleshampc@hotmail.co.uk by post to PO Box 148, Winchelsea, TN31 9FP or phone 07714 169901.



DATES FOR THE DIARY

5th November

Bonfire Night Quiz

26th November

Rye Bay Crew performing Songs of the Sea - 7pm - 9pm

3rd December

Completely Scuppered performing Sea Shanties - 7pm start

22nd December - Festive Night

*Have any 3 courses from the Festive Menu and enjoy
a free bottle of house red or white per couple*

23rd December

Christmas Songs from the Rye Bay Crew - 6pm - 8pm

Food served until 6pm on Christmas Eve



Fellowship Lunch

Fellowship lunch will be on Friday 27th October in Winchelsea Beach Community Hall. 12.30 for 1pm. All welcome but booking is essential.

We are aware that a lot of people have various dietary requirements and for that reason may be put off coming to the lunch but we would like to reassure people that they can bring their own food which can be heated up for them so they don't miss out on the fellowship. The last thing we want is for anyone to be ill after eating one of our meals. I would like to point out that the wine we provide is not of the best quality because if we bought more expensive wine it would reduce the amount we donate to charity but if anyone one wants to bring their own wine we would not be offended. I hope this may persuade a few more people to join us.

To book or for more information contact Mary Parker
07927 107678 or parkermary848@gmail.com



Linnet *Barry Yates*

Rye Harbour Nature Reserve in October

Sunday 1st (8.45am – 10am) – Birds and Breakfast

Enjoy coffee and pastries with a private birdwatching lesson with some of our experts, from the comfort of the Discovery Centre. Binoculars and telescopes available to borrow. Suitable for adults. Booking essential. £13.50 for SWT members, £15 for non-members.

Saturday 7th (10am – 2:30pm) - Wildlife Rangers

Our monthly group for teenagers interested in wildlife, taking part in practical conservation, or those wanting to volunteer for their DofE awards. Suitable for ages 12-16 years. Free, but booking essential.

email ryeharbourlearning@sussexwt.org.uk

Tuesday 10th (10am – 1pm)

Beginning Birdwatching in Autumn

Join us for a circular walk of approximately 3km as we visit a few of the hides for excellent views of the birds of Rye Harbour Nature Reserve. Binoculars recommended. Suitable for adults. Booking essential,

email jamesduncan@sussexwt.org.uk

Saturday 14th (8:30am – 4pm) - Friends' Open Day

Meet the Friends of Rye Harbour Nature Reserve, starting with a guided walk from the car park at 8:30. Stalls and craft items in the Discovery Centre from 10am – 4pm, 833 Lottery draw and a chance to meet other Friends and committee members. All welcome. No booking necessary.

Sat14th (1:30pm – 3pm) - Gardening for Insects

An insightful talk by insect expert, Chris Bentley, about how our gardens can be havens for insects, and what we can do to benefit this wide and varied group of animals. Free for members of the Friends of RHNR, suggested donation of £5 for non-members. Booking essential.

Monday 23rd (10:30 – 2:30) - Microscope Monday

Pop into the education room at the Discovery Centre for a closer look at some of our special wildlife using microscopes, magnifiers and binoculars. Suitable for all. Free event, no booking necessary.

Tuesday 24th (10am – 12pm) - Saltmarsh Explorer

Discover what lives in the mudflats and saltmarsh and check them out under the microscopes in the Discovery Centre classroom. Suitable for accompanied children aged 5-11 years old. Booking essential, £2 per child.

Weds 25th (10am – 12pm) - Wild Bird Wednesday

Join us for birdwatching and discover the birds on the reserve. Then get crafty and create your own bird to take home! Booking essential. £2 per child.

Saturday 28th (10am – 12:30pm) - Wildlife Watch

Halloween special for our monthly club for children to discover more about Rye Harbour's special wildlife through exploration, games, crafts and countryside skills that can help wildlife thrive. For accompanied children aged 5-11. Booking essential, £5 for SWT members, £7 for non-members.

Sunday 29th (10am – 3:30pm) - Guide in a Hide

Come along to the Gooders Hide, between the car park and the sea, where there will be guides available throughout the day to show you the birds. Binoculars, telescopes and spotter sheets available for you to use. Suitable for all. Free, no booking necessary.

To find out more about any of these events, or to book a place, go to sussexwildlifetrust/whatson



Pett Level Independent Rescue Boat

This year saw another fantastic Open Day, raising almost £5,500. This is an incredible sum which makes a huge difference to our operational and training costs. From everyone at PLIRB – a massive thankyou to everyone who donated, supplied a prize or equipment, bought raffle tickets, ran a stall or came along on the day. Too many people and businesses to mention but we are grateful to all.

Out on shouts

During August and September PLIRB were tasked on multiple occasions by UK Coastguard. Our brilliant team of volunteers responded to every shout and for each tasking were launched in under 20 minutes from the time of being called. During one weekend we received three taskings in under 24 hours, including a night shout. Call outs included towing vessels in difficulty, aiding pleasure craft crew, searching for missing or vulnerable persons and providing essential first aid. During the hottest weekend we stayed on station for full days meaning we were immediately able to assist critical situations.

Many taskings were multi-agency involving colleagues from Rye Bay Coastguards and our neighbouring RNLI stations – a testament to the close collaboration between the local emergency services. We train, we learn and we are on call

24/7 to ensure we are always ready for any situation and we are proud of our fast and professional response time.

We invited and we welcomed..

In September we promoted recruitment and we have been delighted to welcome some new volunteers offering a great range of skills, experience and enthusiasm. We truly believe that there can be a role for everyone at PLIRB – whether you have sea legs or not. Always happy to speak to anyone who may be interested – if not yourself, perhaps a friend or family member. Always feel free to get in touch and find out more.

The Pett Slip Buoys – still singing strong.

They were on the radio, then on TV and then in the newspaper – and then they sang for the community and they are doing it all to raise money for PLIRB. Pictured above, they continue to meet, sing and train every week and will be performing at more community events this autumn and into next year. They are truly passionate and dedicated to helping raise the vital funds we need – specifically to replace our principal rescue boat.

If you are interested in The Pett Slip Buoys singing at an event or other location, please get in touch at plirbrescue@gmail.com or call Jo on 07546 320558.

The nights are drawing in and temperatures cooling – but PLIRB is so full of energy, drive and positivity. We are always proud to serve our community and proud to be PLIRB.

To keep in touch please check out our website <https://plirb.com> and our social media: Facebook [@PettLevelRescueBoat](#) and Instagram [@pettlevelindyrescueboat](#).



RYE, WINCHELSEA & DISTRICT
MEMORIAL HOSPITAL LTD

QUIZ NIGHT


Test your knowledge
to win great prizes!

Friday
13th October

at Rye RFC (TN31 7LS)
Doors open at: 6:45pm
Quiz starts at: 7:00pm
Parking available

£10

per person in
a team of 6
(including
hot meal)



To book your team's place please email
fundraising@ryehospital.org.uk or
call 01797 228842

www.ryehospital.org.uk/events

Charity no. 1014232 Company no. 02740665

ryehospital.org.uk/events



Opera for Sailability

Rye Harbour Sailability will present an evening of Opera Arias and Duets on Saturday 14th October at St Mary's Rye, starting at 6pm, with Paul, Hopwood, Thomasin Trezise and Philip Smith from Glyndebourne and The Royal Opera House.

Tickets cost £42, including a complimentary glass of English sparkling wine and canapés. Dress code is black tie or lounge suit.

Book in advance by calling 01797 223112 or email info@ryeharboursailability.org

All funds raised go to Rye Harbour Sailability - a local charity that enables people with disabilities the opportunity to experience the joy of sailing. We aim to give people of all ages, with a wide range of disabilities, the chance to experience the fun and freedom of sailing with an experienced helmsman and crew at Rye Harbour.

Rye Harbour Sailability



Registered Charity Number 1183222

**Rye Harbour Sailability is looking for new trustees
to join their management team**

**Do you have a little time to spare and would like
to be part of something worthwhile and
rewarding?**

- Particularly looking for someone with marketing or fundraising experience
- Or with a financial background
- Most important though is that you are happy to be part of a team and want to help make a difference.



**Enables people with disabilities to get out on the water and enjoy
the fun and freedom of sailing**

**To find out more please contact Gill
gillball@alphacharityconsulting.co.uk**

Or phone Caroline 01797 223112



gillball@alphacharityconsulting.co.uk

ryeharboursailability.org



Rye Food Bank

You can find out more about Rye Food Bank and ways you can offer support, here: ryefoodbank.com

Cam will be making his October doorstep collection on the morning of Tuesday 17th. If you are donating, please contact him so that he can draw up a collection schedule.

Donald Cameron-Clarke

01797 226414 dcc.omh@gmail.com

Winchelsea Church and Town Calendar

October 2023

Sunday 1st	8am: BCP Holy Communion at Winchelsea 9.30am: Parish Eucharist at Pett 11am: Parish Eucharist at Winchelsea
Tuesday 3rd	Mothers' Prayers - Solstice, Sea Road - 10am
Friday 6th	Wine Society tasting - New Hall - 6.30 pm
Saturday 7th	Church Market at St Thomas' - 10.30am till 12 Harvest Celebration - Wesley's Chapel - from 10.30am Winchelsea Arts Concert - St Thomas' - 7.30pm
Sunday 8th	8.30am: BCP Holy Communion at Pett Level 9.30am: Harvest Festival Eucharist at Icklesham 11am: Parish Eucharist at Winchelsea
Wednesday 11th	Second Wednesday Society - New Hall - 2.30pm
Friday 13th	Clair Obscur Theatre Company - New Hall - 7.30pm
Saturday 14th	Residents' Association AGM - New Hall - 11am to 12.30 Winchelsea Film Night - New Hall - 6.30pm for 7.30
Sunday 15th	9.30am: Parish Eucharist at Pett 11am: Harvest Festival Eucharist at Winchelsea
Tuesday 17th	Conservation Society visit to Rochester
Friday 20th	Literary Society - Court Hall - 7pm for 7.30
Saturday 21st	Garden Society Talk - New Hall - 2.30pm
Sunday 22nd	9.30am: Parish Communion at Icklesham 11am: Parish Eucharist at Winchelsea
Friday 27th	Fellowship Lunch - WB Community Hall - 12.30 for 1pm
Saturday 28th	WBCA Halloween Dance - WB Community Hall - 7.30pm
Sunday 29th	11am: Benefice Service with Baptism at Winchelsea 4pm: Service of Thanksgiving for the Departed
Sat 4th Nov	Church Market at St Thomas' - 10.30am till 12
Sun 5th Nov <i>All Saints</i>	8am: BCP Holy Communion at Winchelsea 9.30am: Parish Eucharist at Pett 11am: Parish Eucharist at Winchelsea

Further ahead

Sat 11th Nov	Christmas Fair
Sun 12th Nov	Remembrance Sunday
Mon 13th Nov	Confirmation Service at St Thomas'
Sat 25th Nov	Corporation Italian Evening



Brede Valley Sunset *Ian Rowlands*

**Please send copy for the November Magazine to
ryeview@gmail.com
before Monday 30th October**

For Winchelsea Beach information go to
winchelseabeachcommunityassociation.co.uk

For Winchelsea information go to
winchelsea.com

For more information about the Church go to
winchelsea-icklesham-churches.org.uk

For weekly news from the local area go to
ryenews.org.uk



Rector of Winchelsea and Icklesham and Priest in Charge of Pett

The Revd Jonathan Meyer
The Rectory, St Thomas Street, Winchelsea TN36 4EB
01797 226254 revdjonathan@btinternet.com
The Rector's day off is Monday

Churchwardens

Charlotte Beecroft
Burrin House, North St TN36 4HX
01797 223159 ccmburrin@gmail.com
Celia King
Stargazer, Morlais Place TN36 4LG
01797 227858 kingcelia54@gmail.com

PCC Secretary

Mary Parker
Solstice, Sea Road TN36 4LH
01797 229798 parkermary848@gmail.com

Parish Treasurer

David Harris
07775 920679 harrismanuell@outlook.com

Gift Aid

David Jefferies
Wee Five, Sea Road TN36 4LH
01797 222904 pamela.jefferies@sky.com

Electoral Roll Officer

Jeremy Naylor

White Cottage, Friars Road TN36 4ED

07985 734936 jrnaylor@gmail.com

St Thomas' Primary School

Headteacher Carol Gardiner

Friars Road TN36 4ED

01797 226479

office@st-thomas-winchelsea.e-sussex.sch.uk

Friends of Winchelsea Church

Chairman Ben Chishick

Tower Cottage, Barrack Square TN36 4EA

01797 226653 towercottage@btinternet.com

Treasurer Stephen King

Stargazer, Morlais Place TN36 4LG

01797 227858 stephenking408@btinternet.com

Parish Magazine

Editor David Page

4 Kent Close TN36 4EX

01797 226524 ryeview@gmail.com