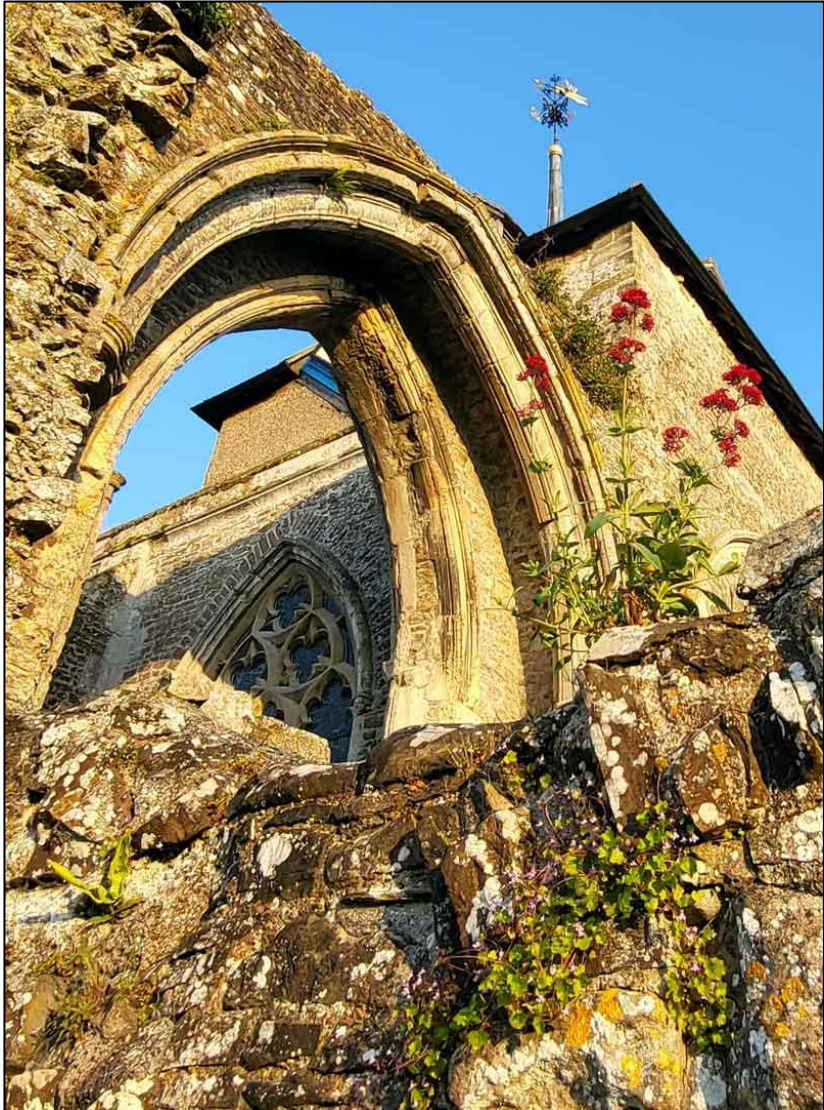


WINCHELSEA PARISH MAGAZINE

1st July 2023





Site of Becket's shrine - Canterbury Cathedral

Reflections from the Rectory

We celebrate our Patronal Service here in Winchelsea on the second Sunday in July. As you are all aware our church is dedicated to St Thomas of Canterbury although, after the English Reformation, the dedication was to St Thomas the Apostle for several hundred years as the cult of St Thomas the Martyr seemed to reek of superstition.

Thomas of Canterbury was martyred on the 29th December so it is much easier for us to commemorate the translation of his remains to the shrine in Canterbury Cathedral which took place a little less than 50 years after his death on 7th July 1220.

I'm delighted that I will be going to Canterbury Cathedral on 7th July with some of the children from our church school in Winchelsea named after our patron saint. I suspect they will not be aware of the significance of the day but I hope there may be an opportunity to explain that during our visit.

Nothing of the shrine which was highly decorated now remains as it was dismantled on the orders of Thomas Cromwell in 1538. Cromwell was a passionate Protestant and follower of the reformed religion and he managed the destruction of many shrines and religious buildings such as our own ruined "Greyfriars" here in Winchelsea.

It must have been a shattering time to have lived through seeing the fabric of mediaeval monastic life systematically and ruthlessly destroyed in a very short period. There is some evidence that Henry VIII himself did not feel especially comfortable but it was expedient for him politically and personally to go along with these changes.

In Church will be celebrating the Patronal Service on 9th July. This year the Pegasus Choir will be singing William Byrd's *Mass for Five Voices* during the Eucharist. William Byrd is significant because he remained a Roman Catholic and composed liturgical music for recusant families during the reign of Elizabeth I for illegal services held in secret. Elizabeth although a convinced Protestant like her mother took a more pragmatic view of religious identity, famously saying, "I have no desire to make windows into men's souls".

Our new king, Charles III chose include music by William Byrd during the coronation and it is said that he wished to indicate his own religious tolerance by including the work of a composer known to have been passionately faithful to the old religion. These are not issues that trouble us much today but it is worth remembering our troubled history and praying for a tolerant future, mindful of cultural, personal and religious diversity. *Jonathan*



Patronal Festival Service at St Thomas'
Sunday 9th July at 11am

Madrigals Folk Songs Spirituals



Pegasus Choir

Saturday 8th July at 7.30pm

Winchelsea Arts

Pegasus Choir return to Winchelsea for the Patronal Festival weekend. They will be performing for Winchelsea Arts on Saturday 8th and singing the service at 11am on Sunday 9th.

The first half of the Saturday concert will include madrigals by William Byrd, Thomas Weelkes and their contemporaries to commemorate the 400th anniversary of their deaths in 1623. In the second half Pegasus will sing a range of folk songs from the British Isles and beyond, as well as lively arrangements of spirituals from across the Atlantic.

Tickets for the concert cost £22 and are available online at winchelsea-arts.org.uk

You can see the concert programme [by clicking here](#)



Talking about the New Hall in 2020

Malcolm Pratt 1935-2023

Malcolm had a connection to Winchelsea in his childhood, and from 1958 to 1964 he and his wife Bridget lived in Cleveland Cottage before moving to Bexhill. They had both studied to become teachers at Goldsmiths College in London and on qualifying they obtained posts in Bexhill. On top of a full-time teaching career, Malcolm served as Clerk and Treasurer to Icklesham Parish Council from 1962 to 1989. His commitment is unparalleled in recent times.

He served as Town Clerk to Winchelsea Corporation from 1984 to 2012, and was held in the highest regard by jurats, successive mayors and members of the Cinque Ports Confederation. His deep knowledge of the history and traditions of the Corporation formed the basis of the advice he gave to all involved in the Corporation over his 28 years in post. For this devoted service to the Corporation, to Winchelsea and the County of Sussex he was recognised by the Queen, receiving the MBE in 2010. He also became an Honorary Freeman of the Town of Winchelsea.

He was quietly instrumental in collating and transferring historic documents relating to Winchelsea its Corporation and town from the then damp, unheated Court Hall to East Sussex Records Office at The Keep in Falmer, where they are

now safely stored and available for study. He remained for 30 years a recognised researcher and archivist at The Keep.

Malcolm enjoyed giving talks to many local organisations about the history of this town, and every penny he received he donated to the maintenance of the Court Hall and Gates in Winchelsea. As if this kindness was not enough, he also donated takings from the sale of his three books to the town. These books are full of interesting facts about our town and the result of much investigative work.



Administering the oath - Mayor Making 2007

Earlier in his life he organised local Badminton tournaments, became President of the Sussex Badminton Association and an England umpire. He could not have given so much to the county of Sussex and the community of without the unwavering support of his wife and family.

We appreciate how lucky we were to have known Malcolm, and for his family their loss will be mitigated by the knowledge that his life was so well lived. His achievements and scholarship remain. We will miss him greatly.

John Spencer



Chris Mears

We are sad to record the death of Chris Mears.

Chris and Jan came to live in Higham Road shortly after the Millennium.

He was a dedicated and expert allotment gardener and, with Jan, contributed the 'Welly Boots' article to the magazine for several years, dispensing sound advice that many of us have benefitted from.

Chris was an active member of the Bonfire Boyes and the Guy Fawkes Society. Heavily disguised in black cloak and broad-brimmed hat, he played the starring role in Winchelsea's annual re-enactment of the Bonfire Night story.

A Dorset man, and descended from one of the Tolpuddle Martyrs, Chris was on the left in politics and a committed supporter of the trades union movement. Winchelsea has lost a 'one off'.

Jan is very grateful to everyone for their support at this difficult time.



Gardening June

Almost every weekend in June saw activity on the gardening front. Garden Society teamed up with Church Market and successfully held their Rose Show in church this year. As well as exhibits of roses, there were irises, clematis and sweet peas on display.

The figures for the St Michael's Hospice Open Gardens are not yet known, but the main opening of the month, for the National Garden Scheme, raised just short of £7,000 for charity and attracted 830 visitors. Almost everybody in town seems to have been involved in some way and we're very grateful to all the people who baked and served cakes under Berni Scott and Jane Eastel's leadership. Also to the car park team led by Peter Cosstick. Because there are no longer sheep to crop the car park grass, Philip Merricks came to the rescue and gave the field several mows. Friary Gardeners were in Castle Street selling plants.

After a sunny Saturday, rain came but the Friends of the Memorial Hospital Rye were not disappointed by their Sunday afternoon opening and despite the weather raised over £1,000.



Saying farewell to St Richard's

A small congregation gathered from Winchelsea Beach, Winchelsea, Icklesham and Pett for a final Communion service as the sale of the building was being finalised. The date was 16th June, the Feast of St Richard of Chichester, and this was an opportunity to remember and celebrate all the people who had worshipped at the church over the years, and the committed ministry to the local community that had been offered from there.

Hardly anyone lived at the Beach at the start of the twentieth century but after the First War holiday chalets and more permanent homes started to appear. The first church was established in 1935 in former garages in Dogs Hill Road. Wartime evacuation and war damage to the building meant that there were no regular services again until the mid-50s, by which time fundraising had started to build something better. St Richard's was the result and the new church opened in 1962. Going forward, the building will be used as a craft centre.

In the early days, the Beach was partly in Pett and partly in Rye Harbour parishes but from 1967 was incorporated in Winchelsea parish. The ashes that were buried in the grounds over the years have been moved to Winchelsea churchyard and are to be marked with a suitable stone.



Fellowship Lunch

The next lunch will be on Friday 28th July at Winchelsea Beach Village Hall at 12.30 for 1pm. Fellowship Lunch has been going on for many years on the last Friday of each month except for August and September. It was started originally by members of St Richard's Church and although there is no longer a functioning church building the lunches will continue and is a sign that God is still at work in Winchelsea Beach.

The purpose is to provide a venue for companionship, meeting new friends and enjoying a pleasant meal together. It is not a religious service but we do always have a short prayer before the meal. The lunch is open to anyone living in the area. There is no set charge for the meal but donations are invited of whatever people can afford. All proceeds after expenses are given to charities.

The expenses consist of the wine and soft drinks, vegetables and accompaniments to the meal, electricity and hall rent. The meals are provided and cooked by the team who do not claim expenses. As everybody is aware, the cost of everything has risen a lot in the past year and we hope this will be considered when making donations. Anyone wanting to come to the lunches should let me know in advance so that we will have enough food and drink for everyone. *Mary Parker* 07927 107678

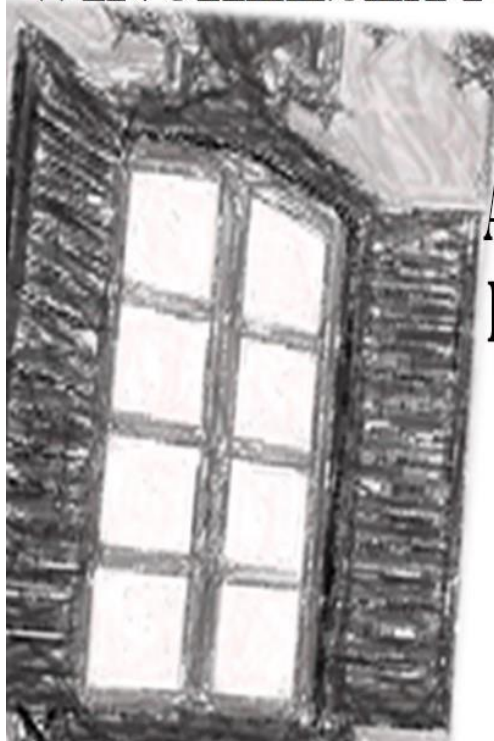


WINCHELSEA FILM NIGHT

WINCHELSEA RESIDENTS ASSOCIATION IN CONJUNCTION WITH WINCHELSEA NEW HALL

A ROOM WITH A VIEW

WINCHELSEA NEW HALL



SATURDAY

15TH JULY

6.30 FOR 7.30

ADMISSION FREE

REFRESHMENTS,

PAY BAR.

COME EARLY, ENJOY A

DRINK OR TWO.

SCREENING

STARTS AT 7.30PM



Icklesham Parish Council

It has been a busy few months for the Parish Council. The May elections were uncontested with 11 Councillors standing. The Parish Council subsequently co-opted the remaining two seats at the Annual Meeting on 15th May. Cllr Mrs Jacqui Stanford was elected Chair and Cllr David Smedley was elected Vice Chair.

The current Parish Councillors are:

Winchelsea Cllr David Smedley, Cllr Chris Chappell

Icklesham Cllr Nick Warren, Cllr Ian McConnochie,

Cllr Angela Thomson, Cllr Andy Rixon,

Cllr Darren Kitteridge

Rye Harbour and Winchelsea Beach

Cllr Jacqui Stanford, Cllr Hugh Sutton, Cllr Sue Lyward

Cllr James Justice, Cllr Natalie Eldridge, Cllr Ian Mann.

Major improvement works have taken place in Rye Harbour car park including some resurfacing, and the height barrier

has been repaired and the height slightly extended for those people who forget they have boxes on top of their cars. Line markings have now been introduced to aid better parking and increase capacity with double yellows to stop the parking on the approach road. We are also planning some improvement works to the public toilets.

Exercise Bikes

Excitingly, we have also installed two arm and pedal exercise bikes in Coronation Field Rye Harbour, Harbour Field Winchelsea Beach and Icklesham Recreation Ground. We are in the process of applying for the necessary consents for these to be installed in Jubilee Field in Winchelsea. Thanks to Rother District Council for their match funding. So get peddling and get fit! This was a project Cllr Mrs Stanford raised a few years ago, so if you have any other ideas for your ward let the Clerk know and we will do our best to deliver.

Winchelsea Traffic Calming

A further consultation meeting has been arranged on Saturday 22nd July which will take place at 11am at Winchelsea New Hall. You may recall that at a similar meeting was held last year, five options were discussed and voted on. There was a clear majority for the 'no left turn/right turn' at the foot of the Strand Hill.

Since then, National Highways and East Sussex County Council have indicated that they are not in favour of this option and have suggested two other options that they might consider, given sufficient support.

1. Closure of Strand Hill to motorised traffic (except emergency vehicles).
2. One way traffic up Strand Hill, ending at the junction where Barrack Square and Back Lane join the main road.

At the Consultation Meeting, you will be able to find out more, ask questions and vote on your preferred option. For those residents unable to attend, there will be an opportunity to vote using a voting slip in the Little Shop, or by emailing the Parish Clerk at ickleshampc@hotmail.co.uk. Voting will close on 5th August. It's important that as many residents as possible vote, so that we have a clear indication of your preference.

Please visit our website for further information
ickleshampc.org/more-pages/winchelsea-speed-calming-consultation/

Black Cat Radar Devices

A few months ago we purchased two Black Cat Radar Devices to monitor traffic speeds throughout the Parish and to collect data for the traffic calming project in Winchelsea. The data collected can be viewed here on our website
ickleshampc.org/more-pages/black-cat-data/



The data is sent to East Sussex Highways, National Highways and Sussex Police in the hope that it will encourage more speed checks in the area.

Upcoming Meetings

The next Planning Committee meeting is on Monday 10th July at 6.15pm at Winchelsea Beach Village Hall, and the next Full Council meeting is on Monday 10th July at 7.15pm at Winchelsea Beach Village Hall. We hope to see you there.

Jenner Sands, Clerk to IPC

Winchelsea Residents Association

LAST CHANCE to DELIVER TRAFFIC CALMING for our TOWN

The consultation Meeting for all Winchelsea Residents
takes place on Saturday July 22nd at 11am in

WINCHELSEA NEW HALL

to hear about the options from Icklesham Parish Council.

Currently:

- 12,000 cars run through the town weekly, which represents 20% of all traffic on the A259.
- Dangerous crossing on High Street for residents, school children, and visitors.
- Law abiding drivers experiencing road rage incidents from speeding drivers.
- The speed of through traffic is increasing, with some already driving at over 50 mph.

The WRA Committee recommends voting for the closure of Strand Hill, which will result in:

- The town will cease to be a short cut for traffic on the A259 towards either Rye or Hastings.
- Reduction of speeding traffic through the town.
- Protection of the magnificent Strand Gate.
- The dangerous junction at the foot of Strand Hill removed.
- Greater safety for school children, visitors, and residents.

For further information email info@winchelsea.com

or see web page www.winchelsea.com

Supported by the Winchelsea Residents' Association, The Conservation Society, St Thomas' C of E Primary School and The New Inn Public House.



Kt Bruce

A Shot of Joy

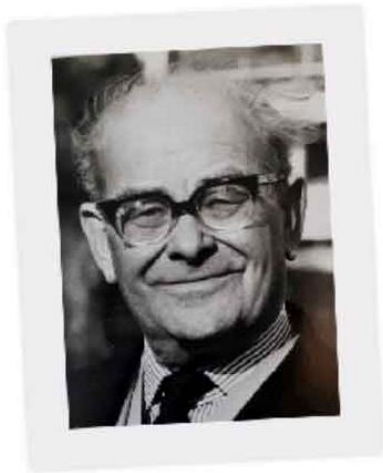
Definitely a force of nature the wonderful Kt Bruce, as anyone who came to last month's Second Wednesday will agree. She always had a longing to study the arts and after mentioning it to her father, was told that 'only hippies did that and she'd become a teacher'. And so she did, eventually, until one day she took this shot and everything changed.

She had finally found the career that made her truly happy. Her portfolio is full of landscapes and architecture, but portraits are her forte. Her warmth and enthusiasm relaxes her subjects and enables her to capture their true character, whoever they are.

She's not happy until she finds the light in their eyes, that tells her who they really are. She's such a joy to be around, that she has remained friends with many of her subjects and becomes their photographer of choice. One of her career highlights is that she photographed the Queen six times, on engagements, as well as at Buckingham Palace.

As I never tire of saying, we are so lucky to share this beautiful area with extraordinary people, present and passed. Join us on the 12th, when we will meet Elaine Luke, who will talk to us about former Winchelsea resident

Malcolm Saville. You will end the second Wednesday of July richer in knowledge and friendships. *Natasha Robinson*



Malcolm Saville remembered

Elaine Luke will be talking to Second Wednesday Society on 12th July.

In her richly illustrated talk she takes us into the world of author, Malcolm Saville, best known for his children's books and nature and countryside books. Saville had a strong affection for and connection with Winchelsea where he lived for several years and which features in many of his books. At one time his (90!) books were as popular as Enid Blyton's. Saville used the local landscape in his books as we will discover in Elaine Luke's talk.

2.30pm at the New Hall.

Annual membership £15, visitors £5, homemade tea £2

2ndWeds@gmail.com



Reviving Bridge in Winchelsea

Howard Norton writes: Before Covid a considerable number of people in Winchelsea played bridge regularly. That number has now dwindled greatly for various reasons. However, there are townsfolk who would like to play but don't know how to recruit partners.

Can I suggest that bridge players of whatever level get together at 2.30pm on Thursday 6th July at 1 Kent Close to discuss where, when and how we might play regularly again. Beginners and those who would like to learn would be particularly welcome.

If you can't manage the meeting, please give me a ring on 01797 226524 so I know you are interested and can brief you on future plans.



Romanesque image of St James in the church of Santiago, A Coruña, before which pilgrims prayed and still pray before starting out

Winchelsea to Santiago de Compostela

Cristóbal Ramírez, official chronicler of the Camino Ingles to Santiago, has written this article for us on the medieval and present day pilgrimage route from Britain to Santiago.

From the 12th to the 15th century, thousands of British pilgrims embarked in one of the 71 identified ports to go to Santiago de Compostela, in North western Spain, to kneel before the remains of St James the Apostle. Although a minority did it as a punishment or penance, it was faith, devotion and the forgiveness of sins for the pilgrim or their relatives that motivated them.

They originated from all corners of what is now Great Britain. Among them we find Scots and Welsh, who travelled many miles to reach some port in the East or South to get on board. Included in the list are two Welsh ports, Pembroke and Newport, but without a doubt, pilgrims preferred to go to ports in the South. From there, some would cross over to France - preferably Bordeaux - and then continue the journey on foot.

However, in most cases they would set sail to the port of A Coruña at the tip of the Northwest of Spain, a destination

known for many decades, perhaps even centuries, well before the large-scale pilgrimages began.

The question is whether Winchelsea was among those ports where the pilgrims set off. The unequivocal answer is 'yes'. There is an anonymous poem, from the time of Henry VI's reign in the C15, entitled 'The Pilgrims Sea Voyage and Seasickness' whose author clearly made the pilgrimage to Santiago, as Winchelsea is mentioned in the text.

The next logical question is who the people were who left their homes to go on pilgrimage. We do not have any names of anyone from Winchelsea - and would appreciate the help of local investigators - but we do know of at least six ships leaving this port.

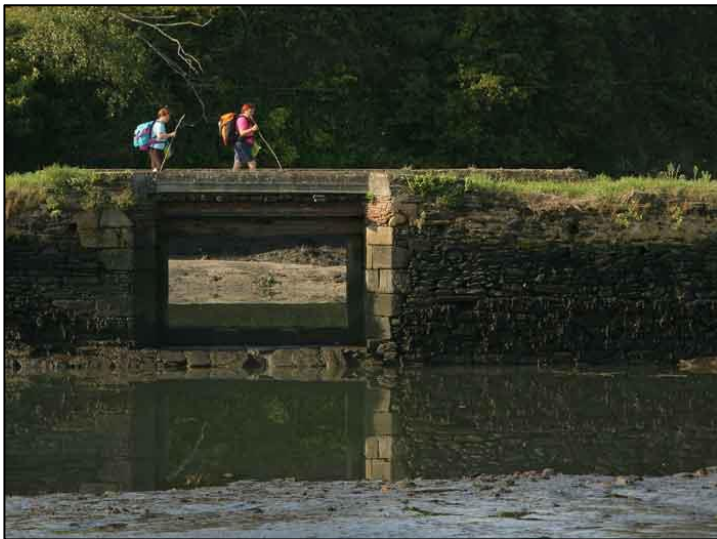
In 1390 the *Leonard* cast off, with 200 pilgrims on board, heading to Santiago de Compostela. In 1398, the *Trinity* did it with 40. In 1434, the *Katherine* set sail with 60 pilgrims and repeated the journey once more the same year with the same number of pilgrims. In 1451 - and please note the name - it was the turn of the *Thomas* with 80. Finally, the *Helen* did the same five years later, although in this case the documentation does not indicate how many devotees went on board.



Walkers have to get two pilgrim stamps a day to get the *compostela* in Santiago, which shows that the pilgrimage was made

Pilgrimages to Santiago have revived since the holy year of 1993, and four hundred thousand people arrived last year, by various routes. The route from A Coruña and from the nearby port of Ferrol - which makes it a two-pronged trail - is today called the Camino Inglés. Records show that in 2022 this route was travelled by over 24,000 pilgrims.

It cannot be denied that the Caminos de Santiago also attract numerous tourists. No one would claim that this is bad in itself, but here we are not talking about hiking trails with no soul, but rather itineraries with a strong spiritual content, regardless of the religion that each one professes, travelled by hundreds or even thousands of people who say they are not religious. But there is a coincidence in affirming that in today's world walking one or two hundred kilometres has become a time for reflection and for asking vital questions about the human condition.



And all this thanks to the fact that seven centuries ago a multitude of ships dared to sail for six days towards A Coruña. Winchelsea bears honourable witness.



Food, Flowers or Both

June's Conservation Society talk packed out the Lower Court Hall. Frank Langrish, our guest speaker brought a chunk of Romney Marsh with him to illustrate the growth of the type of grass and clover which is so nutritious for sheep. He also arrived armed with a brutal looking implement that turned out to be a thistle-removing device.

There did not have to be a slide presentation as he made his points so clearly, regarding his lifelong interest in productive farming and flora and fauna preservation. The whole of his philosophy is a balanced approach to farming, climate change and land management. Many people have real worries as to how this will play out with different contrasting policies aimed at preserving the planet and also the need for food resilience when recent population growth in the UK has been massive.

The audience at the end asked so many questions that the meeting overran by 40 minutes. Invitations were sent to the National Trust's two local offices regarding this talk, as they manage land that surrounds Winchelsea on three sides.

Frank left us with the somewhat worrying thought that dry hot summers carry a fire risk when grass is high and dry. The meeting nonetheless seems to have been a huge success in informing residents of what farming as well as rewilding involves in this area. The volume of applause at the end, showed how much the audience appreciated this talk.

Our visit to Boxley Abbey and the Old House later in June was a great success. We were shown round the Abbey ruins, its extensive, intact boundary walls, the remains of the main church and the massive hospitium.

The vast timbers in the roof date from the 14th century and it is hugely impressive. Much archaeology though to be done in the fascinating grounds of the Abbey. Despite the Abbey being adjacent to the M20 and its noise, we will return in a year or two to learn more and hopefully see the Chapel fully restored. The Abbey grounds, the Hospitium and its Queen Anne house are up for sale. Anyone interested with two and a half million pounds to spare, should consider buying in to history.

Later this year we hope to have an expert to put the case for rewilding, and finally we will have a day out at Dover Castle in September or October.





Sebastian Faulks and Alex Preston batting for the Authors XI *Jerry Moss*

Winchelsea Cricket Club

Flaming June. The weather may have broken records but the Winchelsea batting and bowling has been decidedly inclement. The team visited Catsfield and had an experience akin to being stuck in traffic at the Dartford Crossing. A dreary draw after the home team posted a completely unrealistic total.

Spirits were lifted with the arrival here of the Authors XI. Again chasing a large total, Winchelsea looked to be on course for an unlikely win until wickets started to tumble. Then it was a battle to earn a draw; a battle that was two balls away from success until a bitter plot twist saw the visitor's umpire unmasked as a villain, and the match was stolen from us.

Sunday 25th saw yet another draw against a genial Bodiam team. Sandwiched between these games were two cancellations - Sedlescombe were too short of players and Northiam were too hungover (allegedly).

July Fixtures: 2nd away Catsfield 2pm: 9th TBA
16th home Wittersham 2pm: 23rd away Brookland 1:30pm:
30th away Northiam 2pm *Mike Stoneham.*



Winchelsea Summer Fete

Organised by Winchelsea Cricket Club

Saturday 12th August on the Cricket Field
12 noon to 4pm

Raffle Tombola
Bottle Stall Craft Stalls
BBQ Beer and Pimm's
Charles Palmer Vineyard
Teas
Games

Come and enjoy the fun!



Nature Reserve Events in July

July is a busy month at Rye Harbour Nature Reserve, both in terms of the wildlife on offer and the great range of events you can get involved in.

Saturday 1st (10am - 2.30pm) Wildlife Rangers

A monthly group for teenagers interested in finding out more about wildlife.

Wednesday 5th, 12th and 19th (10am - 12pm) Nature Tots

Bring your toddler along to our nature-based outdoor learning group.

Weds 5th, 12th, 19th, 26th (1.30 - 2.30pm) Nature Babies

Introduce your baby to the great outdoors with our nature-based baby group.

Thursday 6th (10am - 12pm) Rye Harbour Ramble

A circular walk of approximately 3.5km, heading to the hides-to observe the wetland birds. (Members only)

Saturday 8th (8.30am - 4pm) - Friends' Open Day

Meet up with the Friends of Rye Harbour Nature Reserve.

Saturday 8th July (2pm - 3.30pm) Friends of RHNR Talk

Winchelsea Wildlife. Get to know some of the wildlife in and around Winchelsea.

Thursday 13th (10am - 1pm)

Beginning Birdwatching in Summer

Join us as we visit the hides, with excellent views of seabirds, ducks and a whole lot more.

Sun 16th July (9am - 1pm) Friends Walk: Summer Birds

Join the Friends of Rye Harbour Nature Reserve for an extended walk observing our summer visiting birds.

Tuesday 18th (2pm - 4.30pm) Dragonflies and Damselflies

Head off on a 3km flat walk around the reserve looking for dragonflies and damselflies.

Friday 21st July (8pm - 11pm)

Explore Rye Harbour Nature Reserve at Night

Join us for a guided wildlife walk at night to look and listen for nocturnal animals.

Saturday 22nd July (10am - 3.30pm) Guide in a Hide

Drop into the Gooders hide, where guides will point out the birdlife.

Saturday 22nd July (7pm - 11pm)

An Evening with the Moths of Rye Harbour

Come face to face with the nature reserve's beautiful (and bizarre) moths.

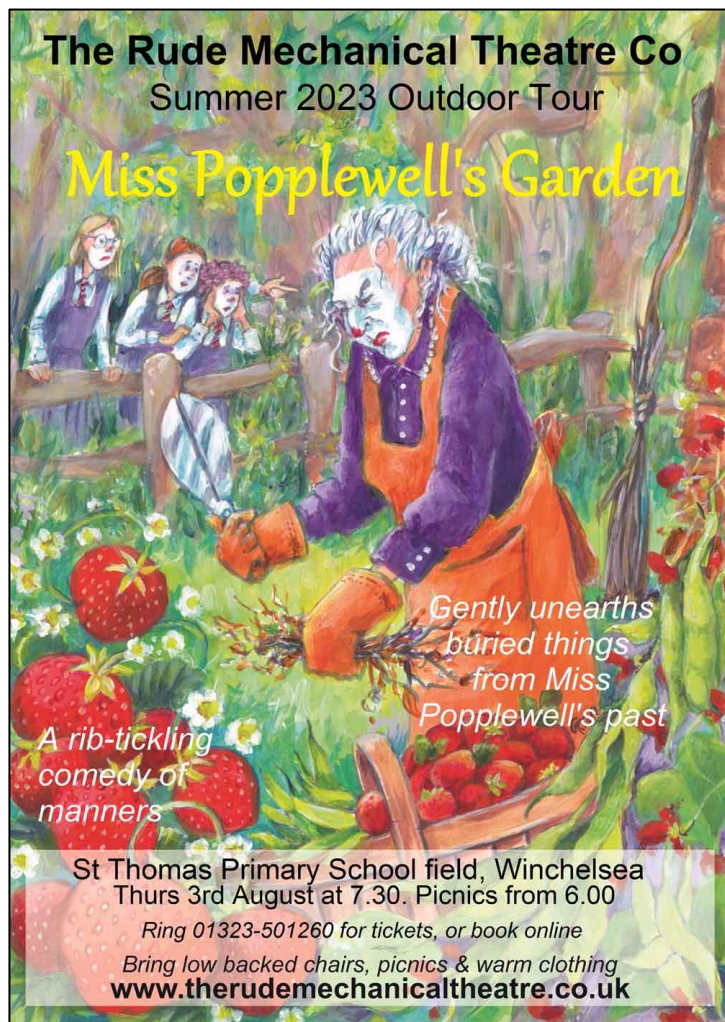
Mon 24th, 25th 26th (10am - 3pm) Wilder Holidays

Childrens events including a treasure hunt, making shelters, creating wildlife art and cooking on the campfire.

Thursday 27th (1pm - 3pm) Wild Beach Alchemy

Experience the mysteries of pewter casting over a campfire.

rye.sussexwildlifetrust.org.uk



The Rudes are a professional theatre company based in Eastbourne who perform Commedia dell'Arte and have toured the south east every year with their original productions for about 23 years. Well received in Winchelsea a few years ago, the Winchelsea Social Committee are delighted to welcome them back. Bring picnics beforehand, low chairs etc.

Details and tickets at therudemechanicaltheatre.co.uk



Conception

The Clair/Obscure theatre company brought their play, '*SOE*' about Vera Atkins to Winchelsea last summer to considerable acclaim. They return this October with a new production, '*Conception: Mary Shelley, The Making of a Monster*'.

Read more about the play at clairobscure.co.uk
Tickets are available at wegottickets.com

Winchelsea New Hall on Friday 13th October at 7.30 pm.



Caring and Sharing East Sussex

‘Live more simply that others may simply live’

The Caring and Sharing scheme was founded in Eastbourne in 1982. Under the scheme, members undertake to give up some item of personal expenditure and send the savings from this sacrifice to projects in poorer countries. The savings help to provide the basic needs of life.

The sacrifice may not be a major one but because it is regular, it grows in value. For example, a packet of biscuits a week might cost about £1. The savings over a year would amount to £52. In so doing members turn away from the material values of the western world and share their wealth with those in need. In 2021/22 Caring and Sharing East Sussex was able to send more than £63,000 generated from members’ sacrifices to 14 overseas projects.

The Caring and Sharing management committee are all volunteers and only about 2% of income is spent on administrative costs (mainly the production of the annual newsletter and postage costs).

Caring and Sharing supporters are generally members of a group linked to an Anglican Church in East Sussex, but there are also small groups in others parts of the UK. The groups choose which project they would like to support. The group

at Winchelsea supports Amara House in Romania. This project was founded by a charity called *Fundatia New Life*. It is a wonderful home for seven young men with physical and learning disabilities who were all rejected by their families and spent the first part of their lives in one of the terrible institutions that existed under the Ceausescu regime.

The institutions were eventually closed and it was expected that the residents would go back to their families. But in many cases this was not possible and they ended up living on the streets. The young men at Amara House live like a family and are cared for by dedicated Romanian staff. They have flourished in this loving environment. As the boys have grown older, their medical conditions have worsened and the home has to spend increasing amounts on medical expenses.

The project depends on the regular sacrifices made by faithful Caring and Sharing supporters. If you are interested in finding out more, please contact Tessa Potts (01797 223050), who is the Caring and Sharing representative for the Winchelsea group.

Julia Maling (Projects Officer)





Removing shuttlecocks from the New Hall roof in May 2021

New Hall News

Did you know that the Hall can be booked at short notice for Badminton or Table Tennis? The rate is £2 per hour per person and needs to fit into the gaps in the regular bookings. The New Hall events calendar can be viewed at winchelsea.com/new-hall/events-2. All equipment is available in the Hall. Give Rosemarie a ring if you are interested on 07941 458628.

We are pleased to report that the new chair fund stands at well over £1,000. We will be setting aside this money towards the Ladies WC refurbishment starting in December. Thank you for your generosity and support for the New Hall. Donations can be enhanced by gift aid, so when you give we also take back the tax you paid to Jeremy Hunt, it's a win-win! We continue to receive positive comments on the new chairs: feedback is always welcome.

While on the subject of fundraising, thank you to those attending the June Film Night for signing up enthusiastically to our 100 Club lottery. Forty have joined to date.

This scheme makes donating your money to the Hall more of a game, but importantly, supporters' funding for our various improvement works is much appreciated and backed up by local grants, so that for every £ we raise we apply for another £ in outside support.

Other ways of further supporting the Hall, apart from the generosity of many of you giving your time for Hall events, include joining our management committee and contribute at our bi-monthly meetings. Let Rosemarie or any committee member know if you are interested.

Rob Mortimer, Secretary



**We need to raise £5,000 for the
refurbishment the New Hall toilets.**

Help us by joining our new local lottery



**You could
win a cash
prize of up
to £100 each
month...**

**For £24 per year, or £2 per month, we'll allocate
you a number in our monthly prize draw.**

**Half of the ticket price will go to the New Hall
and the other half to the monthly winner.**

First draw to take place on Saturday 19th August

**Pick up a leaflet in the shop, or pub, or come and talk to
us at Film Night in the New Hall, or contact us directly...**

**Rosemarie Roberts - rosiero96@icloud.com, 07941 458628
Ali Casey - AliWinchelsea@outlook.com, 07926 128737**

rosiero96@icloud.com

aliwinchelsea@outlook.com



Pett Level Independent Rescue Boat

Our AGM took place on 14th May. We heard reports from our Chair and Treasurer and elected the Committee for the upcoming year. The Committee team are Adam Flower, Jo Barry, Sarah Harris, Kevin Nuttall, John Brooker, David Martin, Kevin Prescott, Stuart Homewood, John Crowther.

Raffle tickets for our Open Day Grand Raffle are now on sale. Top prize is an Aquaplanet Max 10' 6" inflatable paddle board with a paddle board lesson and wetsuit. Lots of other great prizes on offer. Tickets are £2.50 each or £10 per book of four. Available from PLIRB on Sundays at the Charity Shed stall or speak to any PLIRB volunteer.

In May we were delighted to be involved in two fantastic community events – the Coronation Community Fun Day and the 'Activate' 25th Anniversary event. Our BBQs and games are always super popular and great fun. We'll be at more events during the summer months including Icklesham School Fete, Pett Flower Show, Winchelsea Summer Fete and Icklesham Village Summer Fete. We look forward to seeing you all there.

In June our crew saw the social media post which showed the poor state of the public toilet at Dog's Hill in Winchelsea Beach. With the busy season approaching, we felt something had to be done and contacted the council who were very happy to accept our offer to help. Over three evenings, volunteers gave the toilet a fresh coat of paint and a good clean! It is now much more presentable and welcoming to visitors.

The Charity Shed continues to sell a fantastic selection of donated items – from housewares and toys to clothes and shoes, do come and browse! We also have great merchandise items including hessian bags, pin badges and our 2024 calendars, all great gift items.

A major project for PLIRB over the next 12 to 18 months will be to work towards securing 'Declared Facility' status. This is a recognised code for lifeboat facilities which will become a necessity for PLIRB if we are to continue operating in the future. Securing this status will involve significant administrative work, advanced training and assessments and potentially an upgrade to our current equipment and facilities. We are confident that we will successfully complete all we need to – but it will involve additional cost and a huge input from our dedicated team. Please keep looking out for updates on our proposed plans and updates.

Have a wonderful July and hope to see you out in the community. Do come and visit us on Sundays and remember that we always welcome new volunteers. Please continue to be vigilant about weather warnings, seasonal tides and currents and stay mindful of the dangers at both the top and bottom of local cliffs.

To keep in touch and to purchase our merchandise, please check out our website <https://plirb.com> and our social media: Twitter [@PLIRBRescue](#); Facebook [@PettLevelRescueBoat](#) and [@supportingPLIRB](#) and Instagram [@pettlevelindyrescueboat](#).

MINDFUL DRAWING

"Awareness requires only that we pay attention and see things as they are."



By blending meditation and drawing techniques, I'll guide you to look within and around yourself, helping you to connect with your experience and let go into creativity.

Guided by
Ellie Meyer

7 - 9 pm
19 July 2023

£12 per person

Winchelsea, East Sussex
Please email: eleanormeyer@outlook.com



eleanormeyer@outlook.com

SILENT WALK | DUSK

*"No matter how chaotic it gets,
silence is there waiting. All we have
to do is stop talking, start walking
and listen."*



Join with others in nature & a shared presence, on a
silent walk in the beautiful Sussex countryside.

I offer guided meditations to help you connect with
yourself, surroundings & each-other.

Guided by
Ellie Meyer

7 - 9 pm
26 July 2023

£12 per person

Winchelsea, East Sussex

Please email: eleanormeyer@outlook.com



eleanormeyer@outlook.com



Come and join our fun, friendly and inclusive
Zumba Gold sessions in Winchelsea and Rye

Mondays

Winchelsea Beach Community Hall 3.30-4.30pm

Wednesdays

Rye Community Centre 10.40-11.40am

Whether you're 2 or 102 this easy to follow class
is adapted and safe for everyone and especially
geared to older adults. Plus we have the most fun!

Drop-ins and bookings are all welcome
£6

Daisy Chain Fitness
07718 660124

Wednesday 26th July

TOM HANKS DOUBLE BILL OUTDOOR CINEMA



Burgers, chips, pizza, ice cream
on sale



5.00pm

Gates open at 4.00pm

7.00pm

Rye RFC, New Road TN31 7LS

There is a licensed bar so please do not bring your own alcohol

<https://www.ticketsource.co.uk/rye-winchelsea-district-memorial-hospital-ltd/t-avzegdn>

In aid of Rye, Winchelsea & District Hospital Ltd
Registered Charity No 1014232



ryehospital.org.uk/outdoor-cinema-screening

Winchelsea Church and Town Calendar

July 2023

Saturday 1st	Church Market - 10.30am till 12
Sunday 2nd	8am: BCP Holy Communion at Winchelsea 10.30am: Sea Sunday Service at Pett Level 11am: Parish Eucharist at Winchelsea
Tuesday 4th	Mothers' Prayers - Solstice, Sea Road - 10am
Saturday 8th	Winchelsea Arts Concert - St Thomas' - 7.30pm
Sunday 9th	8.30am: BCP Holy Communion at Pett Level 9.30am: Parish Communion at Icklesham 11am: Patronal Festival Eucharist at Winchelsea
Wednesday 12th	Second Wednesday Society - New Hall - 2.30pm
Saturday 15th	Film Night and 100 Club Launch - New Hall - 6.30 for 7.30
Sunday 16th	9.30am: Parish Eucharist at Pett 11am: Parish Eucharist at Winchelsea Winchelsea Cricket Club Home match - 2pm
Friday 21st	Winchelsea Literary Society Summer Party
Saturday 22nd	Traffic calming consultation meeting - New Hall - 11am
Sunday 23rd	9.30am: Parish Communion at Icklesham 11am: Parish Eucharist at Winchelsea
Friday 28th	Fellowship Lunch - W B Community Hall - 12.30 for 1pm
Sunday 30th	11am: Benefice Eucharist at Winchelsea
Thurs 3rd Aug	Outdoor Theatre - St Thomas' School - 7.30pm (Picnics from 6)
Sat 5th Aug	Church Market at St Thomas' - 10.30am till 12 Final day for voting on traffic calming proposals

Further ahead

Sat 12th Aug	Winchelsea Summer Fete
Sat 26th Aug	Garden Society Summer Show
26th to 28th Aug	Millennium Artefacts Art Exhibition



Maidenhair spleenwort *Robbie Gooders*

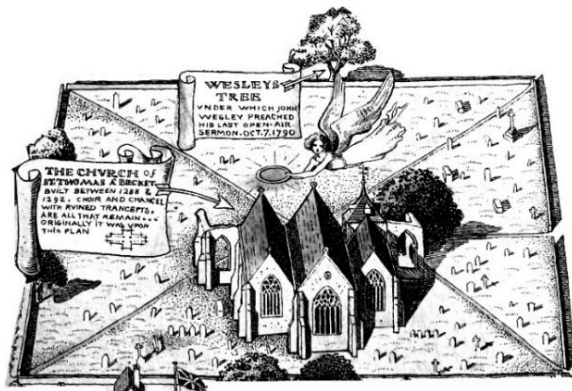
**Please send copy for the August Magazine to
ryeview@gmail.com
before Sunday 30th July**

For Winchelsea Beach information go to
winchelseabeachcommunityassociation.co.uk

For Winchelsea information go to
winchelsea.com

For more information about the Church go to
winchelsea-icklesham-churches.org.uk

For weekly news from the local area go to
ryenews.org.uk



Rector of Winchelsea and Icklesham and Priest in Charge of Pett

The Revd Jonathan Meyer
The Rectory, St Thomas Street, Winchelsea TN36 4EB
01797 226254 revdjonathan@btinternet.com
The Rector's day off is Monday

Winchelsea Churchwardens

Charlotte Beecroft
Burrin House, North St TN36 4HX
01797 223159 ccmburrin@gmail.com
Celia King
Stargazer, Morlais Place TN36 4LG
01797 227858 kingcelia54@gmail.com

PCC Secretary

Angela Hill
Friars Halt, Friars Road TN36 4ED
01797 226325 angelam.hill@btinternet.com

Parish Treasurer

David Harris
01775 920679 harrismanuell@outlook.com

Gift Aid

David Jefferies
Wee Five, Sea Road TN36 4LH
01797 222904 pamela.jefferies@sky.com

Electoral Roll Officer

Jeremy Naylor
White Cottage, Friars Road TN36 4ED
07985 734936 jrnaylor@gmail.com

Organist

David Birchenough
07840 595338 daviddaorganist@icloud.com

St Thomas' Choir

Marion Lovell
7 Oast House Field, Icklesham TN36 4BP
01424 815247 marion@abingworth.plus.com

St Thomas' Primary School

Headteacher Carol Gardiner
Friars Road TN36 4ED
01797 226479
office@st-thomas-winchelsea.e-sussex.sch.uk

St Richard's Chapel Warden

Mary Parker
Solstice, Sea Road TN36 4LH
01797 229798 parkermary848@gmail.com

Friends of Winchelsea Church

Chairman Ben Chishick
Tower Cottage, Barrack Square TN36 4EA
01797 226653 towercottage@btinternet.com
Treasurer Stephen King
Stargazer, Morlais Place TN36 4LG
01797 227858 stephenking408@btinternet.com

Parish Magazine

Editor David Page
4 Kent Close TN36 4EX
01797 226524 ryeview@gmail.com