

# WINCHELSEA PARISH MAGAZINE

1st March 2023



Brede Valley looking towards Ferry Bridge *Phil Mack*



## **Reflections from the Rectory**

As I write, it is a little less than a week since we returned from the Diocesan Pilgrimage to the Holy Land. I believe it is often the nature of such visits that they are extremely busy and we were bussed around often following very early morning starts. I had to stop and write things down to remember where we had been.

It will take a long time to process the experience. But it was certainly very worthwhile and gives an insight into so many different aspects of the life of Jesus, the significance of the Bible and of course the distressing political situation within Israel.

We spent three days by the Sea of Galilee and four days in Jerusalem. We opted for the extension to go to Petra which involved two more days in Jordan and a final night back in Jerusalem.

One thing that I can be sure of is that it will be impossible to read any of the Bible narratives without having a picture of the location in my mind. Many of the parables make more sense as they are so rooted in the landscape and the life of the countryside; weeds by the path, goats and sheep on the mountain sides, bread and fish.

It is illuminating to understand the geography of the area. The distances between those places where Jesus preached and lived by the Sea of Galilee are not far apart and even the road to Jerusalem would not take many days on foot; the logic of the gospels falls into place.

For me the experience brought alive some of the biblical metaphors, with which we are familiar. For example the living water, which Jesus talks of to the Samaritan woman,

“Everyone who drinks of this water will be thirsty again, but those who drink of the water that I will give them will never be thirsty. The water that I will give will become in them a spring of water gushing up to eternal life.”

It is an image that can easily be understood but when you stand by the Sea of Galilee filled with life and fish and then see the Dead Sea, you understand what a potent symbol it is.

We were told another parable by our guide a Christian Palestinian, a parable of Galilee’s two seas. One fresh and lively, a magnet for man and nature; the other barren and forsaken. Both are filled by the Jordan, but while one gives freely, allowing its water to flow onwards, the other hordes its supply.

“The Sea of Galilee gives and lives. The other Sea gives nothing. It is named the Dead. There are two kinds of seas in Palestine and there are two kinds of people in the world. Which kind are we?”

*Jonathan*

There’s an account of the pilgrimage on the diocesan website:

[chichester.anglican.org/holy-land-pilgrimage-updates/](http://chichester.anglican.org/holy-land-pilgrimage-updates/)

---



## Garden Society Spring Events

**The Spring Show** is earlier than usual this year, on 25th March. If you plan to enter for the first time, help is at hand as we can answer any queries you may have. All exhibits are displayed in your own containers, so you can have a practise at home if you wish.

One vital ingredient was omitted from the Carrot Cake recipe - the carrots! This should read 265g - approximately three carrots.

All completed entry forms should be delivered to Sally and Graham Rhodda on Thursday 23rd March. Full details are in the members' schedule. If you aren't yet a member and would like to join, phone Graham and Sally on 01797 226062. The Show starts at 2pm and admission is free.

**A bonus garden opening.** Philip Kent has offered to open his garden, *Kings Leap*, Castle Street on the day of the show. This is a really wonderful garden with views of Rye. His camellias are spectacular at this time of the year and, as there will be no NGS spring opening, he would like to share his garden between 11am and 3pm.

This gives everyone time to stage exhibits before 11am and fit in a visit to his garden and the show.

**Garden design talk.** Although we usually have only one lecture each year, following several requests, we are having a second talk on Saturday 1st April at 2pm in the New Hall - the talk starting at 2.30 pm. A local multi-talented resident, Chris O'Donoghue will be giving us ideas on designing or even redesigning our gardens. Have a look at his website [chrisodonoghue.co.uk](http://chrisodonoghue.co.uk) The cost will be £5 including tea or coffee.

*Cynthia Martin*

<p>Winchelsea Garden Society</p> <p><b>Garden Design</b></p> <p>Chris O'Donoghue, the medal-winning designer, will give a talk illustrating ideas for use in our own gardens</p> <p>The New Hall Winchelsea 2:00 pm for 2:30 Saturday 1 April 2023</p> <p>Entry £5 to include tea or coffee</p>	
---	--



## **No bongs**

You may have noticed that the church clock stopped striking at the end of January. The problem was a broken pulley which meant that the weight started rocking, banging against the control switch and turning off the mechanism. The damage may have been caused by the exceptionally high winds at the time.

---





## **An Evening with Charles Moore**

Charles Moore, now Lord Moore of Etchingham, will be the speaker at Literary Society on Friday 24th March.

He has had a long and distinguished career as a journalist, editor and political biographer. He edited *The Daily Telegraph* for some years, and also *The Spectator*, for both of which he still writes weekly columns on multiple matters: social, political, ethical, general but always forthright, witty and humane.

He is the author of a three-volume biography of Margaret Thatcher, by whom he was trusted implicitly, on the understanding that nothing would be published in her lifetime, a promise which he kept.

We await his talk, the topic of which he is not yet revealing, so it is *An Evening with Charles Moore*, which we eagerly await.

This meeting will take place at St Thomas's Church at 7pm for 7.30 on 24th. Admission is £5 for visitors and guests, free for members.

---



## **Misha Galant at Winchelsea Arts**

Pianist Misha Galant returns to Winchelsea in next month to play a concert of works by Haydn, Scriabin, J S Bach, and Medtner.

Misha was staying in Winchelsea early last year while taking part in the Hastings International Piano Competition and gave a recital at St Thomas's to raise funds for Ukraine when the war started. He had been studying in Russia but has not been able to return and is based in the US. You can read more about him here - [www.columbia.edu](http://www.columbia.edu)

This Winchelsea Arts concert takes place at St Thomas' on Saturday 18th March at 7.30pm and tickets, costing £20, are available now from the Arts website and at the door.

[winchelsea-arts.org.uk](http://winchelsea-arts.org.uk)

---



# Charity Spring Pub Quiz



*Sunday 12th March 7pm*

*Cash Prize & Raffle*

*Maximum 6 per team*

*£20 entry per team*

*Booking now*

*Phone 01797 226252*

*or pop into the Pub to book your table*

*In support of the New Hall, Winchelsea*



Paul and Debbie are so grateful for all the support shown for the charity quiz nights over the past six months which have raised hundreds of pounds for local charities. After the March quiz, it is planned to resume in September.



## The Farthest Bridge

*Natasha Robinson writes:* I often wonder why some enterprises garner more support, or gather more traction than others. Why do some advertising campaigns gather momentum and take off, while others, equally worthy, well planned and funded, just don't attract the attention they should.

Geraldine recently pointed out to me how much she dislikes the 'Go Compare' ads. While I view them as a bit of fun, a silly and light-hearted way to remind us of something serious, she finds a tenor singing a jingle irritating and irreverent. And that's because I'm not invested in singing in any way at all, whereas Geraldine is. She is a loyal member of the Hastings Philharmonic Choir. Just as I find most cooking programs on TV, patronising and flippant, so does she with the misuse of her art, whatever the message behind it.

And so it proves with even wars. We are all following the detail of what's happening in Ukraine, but 30 years ago, another war in Europe, was just a regular item on the evening news.

Jeremy Bowen would bring us powerful reports of events in Bosnia, just two and a half hours away. As a nation, we

never engaged in that conflict in an emotional sense, despite the fact that we certainly did on the ground, from the outset and to this day.

Margaret Sargent will be at Second Wednesday Society on Wednesday 8th March. With her we will learn about *The Forgotten Army of the Second World War*.

The Fourteenth Army, was a Commonwealth Force, made up of British, East and West African divisions and Indian units. By the end of the war it was in fact, one of the largest remaining armies. Perhaps because it was on the other side of the world, perhaps because there was so much going on, on our doorstep, their story was never reported in the same way as the War in Europe.

The Burma Campaign, Singapore, Mandalay, Rangoon; all romantic names, which don't seem to elicit the horror in us that they should. David Lean's *The Bridge on the River Kwai*, or *Tenko*, the 1980's TV series, are probably all that most of us know about the Far East between 1939-46. As usual at Second Wednesday, we will have the chance to learn from an expert, with the added benefit of first-hand knowledge and precious personal recollections.

As we have seen from our first two talks this year and the variety of people's personal stories, they are always powerful, fascinating, enlightening and beguiling. Through the charm and passion of experience, we discover and understand far more about our world and its history. And so it will prove again next Wednesday. See you all then.

Wednesday 8th March at 2.30pm in the New Hall.

---



## Millennium+25

To mark the year 2000, communities all round the country gathered together pictures and information about their residents into modern 'doomsday' books. *'Winchelsea at the Millennium'* was our local version.

A team has formed to produce a new book to mark the quarter point of the new century. The aim is to have it ready to buy by the end of 2024 and, of course, everything depends on lots of us being willing to let our pictures and some information about ourselves be gathered for publication.

Early in 2024, a letter will come through your door inviting you to participate. Contributions will be edited together and photos added: a keepsake for everyone living here at the quarter-century, and a fascinating record for future generations to enjoy.

Desktop publishing has come on by leaps and bounds since 2000 so we can expect this to be a really high-quality full-colour hardback.

---



## **Iham Bank and River Side**

On Saturday morning, 18th March, Winchelsea Archaeological Society will hold a walk around parts of Iham. It will start at 11am from the Beacon in Castle Field. The ground conditions are currently good (not too muddy), but boots should still be worn.

Iham preceded Winchelsea on the Hill of Iham and was a Cinque Port limb of Hastings in its own right. We believe St Leonard's Church to have been Saxon in origin. Does the landscape of Iham Bank and River Side offer any other clues as to its early history?

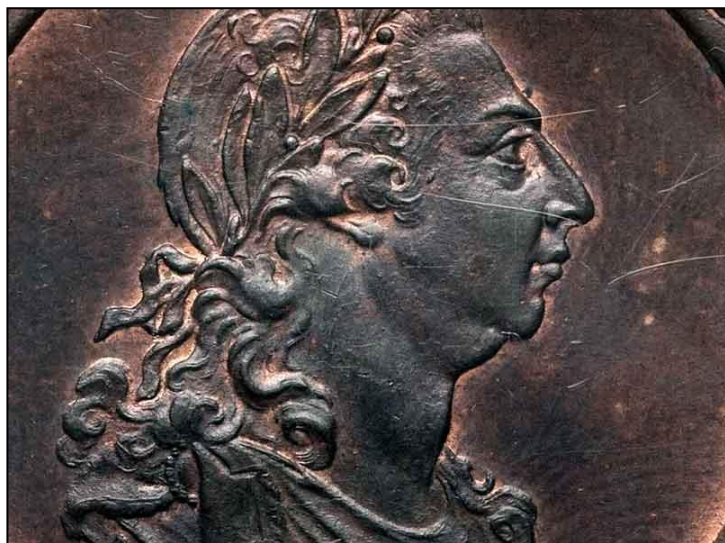
In March last year, the WAS walk around Iham concentrated on the top of the hill - Iham boundary stones, Castle Field and the above-ground remains of St Leonard's church, and the below-ground remains revealed by the HAARG magnetometry survey of the motte and bailey castle, and the Roundle tower.



This time we will look at the remaining parts of Iham down the Iham Bank - St Leonard's marsh, possible sites of St Leonard's Well and the Blackfriars friary (mark 2), the sea wall and the route along the Iham boundary to an earlier site of the Brede ferry. The return route will be via the old road which goes south towards the New Gate.

These features are shown on the photograph extracted from a Twitter thread by Phil Barrett - this was constructed from recent high-definition LIDAR measurement.

*Andrew Scott*



## **Unearthing King George**

I was digging over the front bed at my father's house in Hiham Green when I unearthed an old coin. I cleaned it up (under the tap) and it is a 1792 George III penny, in pretty good condition. I gave it to Jo Turner who will put it in the museum. There is a perfect space in the coin cabinet.

*Jane Eastell*

---

**WINCHELSEA FILM NIGHT** presents,  
**SIMON PEGG & NICK FROST** in the Comedy film

# HOT FUZZ



**SATURDAY 11<sup>th</sup> MARCH 6pm for 7pm**  
**WINCHELSEA NEW HALL**

**Admission Free – Refreshments - Pay Bar.**

**Come early, enjoy a drink or two.**

**Screening starts at 7.00pm**

The Winchelsea Residents Association in conjunction with Winchelsea New Hall





## **A Very Winchelsea Quiz Night**

The Friends Of the Ancient Monuments held a sell-out and very unique Winchelsea-themed quiz on Saturday 18th February at the New Hall.

In addition to an ingenious and entertaining selection of questions, the thirteen teams of six quizzers were treated to a delicious two-course meal.

Special praise and thanks are due to the quiz-masters, the cooks, those who served and cleared away, and of course the wonderful and entertaining compere, for hosting such a fabulous evening that raised the considerable sum of £1,200 towards the upkeep of the town's medieval gates and Court Hall Museum.

*Ian Kingham*

---



## Winchelsea and the Medieval Wine Trade

David Hopkins will be giving a talk to the Winchelsea Wine Society on Friday 17th March at 6pm for 6.30 at the New Hall.

Entry costs £5 - cash on the door. French wines will be available by the glass. Proceeds from entry and the bar will go to The Royal Marsden Hospital Children's Unit charity.

All are welcome. No booking but pre-notification would be appreciated if possible to [brianleonard779@gmail.com](mailto:brianleonard779@gmail.com)

---

## Summer Fete 2023

Winchelsea Cricket Club are taking over the running of the Fete this year. It will be held on Saturday 12th August.

---

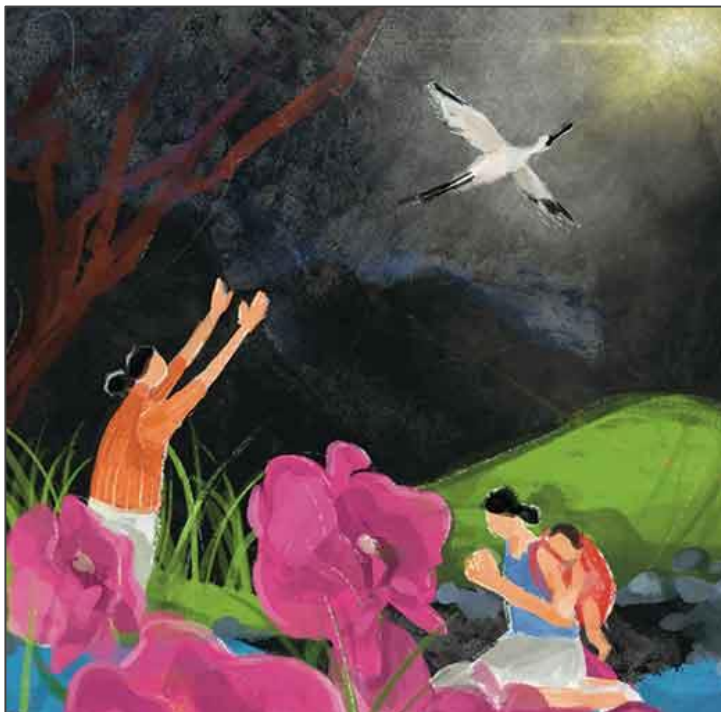
**Winchelsea  
Garden Society**

# **Spring Show**

- Flowers
- Floral Art
- Vegetables
- Pot Plants
- Cookery

**The New Hall  
Winchelsea  
2:00 pm Saturday  
25 March 2023**





## World Day of Prayer 2023

This year's service entitled *I have heard about your faith* has been prepared by the Christian women of Taiwan, and will be held in St Mary's Church, Rye on Friday 3rd March at 10.30am. Please join us and be part of a huge wave of prayer which circles the earth for at least 38 hours.

*Judith Payne*

---

## Barbara McFadyean

Barbara died at home in Barrack Square on 5th February. Married to Michael for 66 years, she divided her time between his family home in Rockcliffe in Dumfries and Galloway and her home in Winchelsea. She brought laughter and good company to us all. Her funeral takes place at St Thomas's on 1st March.



## **Bible Study**

We will gather for a third session of Bible study in the New Inn on Thursday 2nd March at 6pm. Overall 20 different people have attended, fourteen on each occasion.

For this session we will continue to reflect on Biblical Wisdom and the suggested texts are Job Chapters 27, 28 and 38 and Ecclesiastes Chapter 3.

All are welcome do ask Jonathan if you would like more information. 01797 226254 [revdjonathan@btinternet.com](mailto:revdjonathan@btinternet.com)

---

## **Ecumenical Service**

An ecumenical service will be held at Winchelsea Methodist Chapel at 3pm on Sunday 26th March. All are welcome.

---

## Easy Fundraising for the Church

Some time ago I commended this organisation to help with fund raising for the church. In the last eight months or so, fifteen people have joined and we have now raised almost £300 for church funds.

If 60 people were to sign up we might achieve £1,000 or more in a year. There is no cost to the user. Once you sign up you simply go to the *easyfundraising* site and from there log in to the company from which you want to make an online purchase.

You might raise £1.20 for a supermarket shop or £20 for a computer as I did when ordering from Currys through the site. The larger the purchase the bigger the donation. Please consider it. It is easy to use follow the link below and if you are visiting for the first time you will need to logon after that it is very simple. *Jonathan*

[easyfundraising.org.uk](http://easyfundraising.org.uk)

---

## New Group for the Visually Impaired

If you have problems with deteriorating eyesight, you may be interested in attending a meeting of a new group for the visually impaired starting after Easter at Icklesham Memorial Hall.

For details, phone Brian Pitt 07980 959213  
or Daphne Scott 01424 813488  
or Marion Lovell 01424 815247

---





## **Lent Lunches**

A number of Lent Lunches have been organised in Winchelsea, Icklesham and Pett. They will be a soup lunch with bread and cheese, donations will go to the church or a nominated charity.

They will commence at 12.30pm.

### **Friday 10th March – The Rectory, Winchelsea**

Please confirm as numbers will be limited.

Collection for the Turkish/Syrian Earthquake Appeal –  
01797 226254 [revdjonathan@btinternet.com](mailto:revdjonathan@btinternet.com)

### **Thursday 16th March – The Village Hall, Icklesham**

numbers not limited – just turn up.

### **Thursday 23rd March - The Village Hall, Icklesham**

numbers not limited – just turn up.

### **Tuesday 28th March – Cliff House, Pett Level**

donations welcome (to Church funds)

Please confirm with Angela Hawkesley 07976 389635

### **Friday 31st March –**

### **Fellowship Lunch, Winchelsea Beach Village Hall**

numbers not limited but please contact Mary Parker  
07927 107678.





## **An Invitation to the Winchelsea Mayoring Ceremony**

The ceremony will be a fully public event, held on Easter Monday  
as it has been since the foundation of the town  
and you are warmly invited to attend

On that day David Merrifield will take up the office of Mayor  
for a second year

At the ceremony new Freemen will be appointed

The Mayor and Corporation would greatly value your support  
at this celebration which reflects the unique and special  
story of our town

**11.am on Easter Monday, 10th April 2023  
at Winchelsea Church**

The ceremony will last about 40 minutes and there will be an evening  
reception from 6.30 to 8.30 in the New Hall

**All are welcome**

For the evening reception, RSVP The Town Clerk, Lorna Challand  
[lorna.challand@keme.co.uk](mailto:lorna.challand@keme.co.uk) or 01797 222710

[lorna.challand@keme.co.uk](mailto:lorna.challand@keme.co.uk)



## Pett Level Rescue Boat

Our first announcement of the year is that our AGM will take place on Sunday 14th May at 10am at the PLIRB Boathouse. The AGM will appoint the Committee for the upcoming year and review the annual reports. All are welcome to attend.

The second date for your diaries is our annual Open Day which will take place on Sunday 27th August. It's a long way off, but seeing how diaries get very booked up, we like to let you know early. If you are interested in having a stall, donating a prize or being involved, please email [plirbrescue@gmail.com](mailto:plirbrescue@gmail.com).

On a similar note, if any local villages or community associations are holding an event this year which you think you would like us to be part of, please contact us to see what may be possible.

Our first ever carol concert evening in December was such a happy and fun occasion. Thank you to everyone who turned out in the calm but freezing temperatures to sing their hearts out. A massive thank you to Ita and Nick Wise and Eaters@Pett Café for leading the singing and providing delicious food and drinks. Keep looking out for details on more adventurous singing endeavours this year.

On a similar musical tone, our crew have been extending their Thursday evening training sessions to tune their vocal

chords and embrace the art of singing sea shanties. Under professional guidance, the team are busy learning harmonies and choruses, all with the focus to an upcoming public performance. Keep looking out for more announcements.

PLIRB is looking for a fundraiser to join our team. The holder of the post will be a member of the committee and be involved in helping secure much-needed funds to ensure the future of the rescue boat. If you are interested, or know anyone who might be, please email [plirbrescue@gmail.com](mailto:plirbrescue@gmail.com) for more details.

The Charity Shed will be back open later in spring. We have a wonderful new selection of items on offer at great prices – something for everyone.

We wish you all a happy venture in to spring. o come and visit us on Sundays and, if you would like to get involved, do get in touch. Please continue to be vigilant about weather warnings, seasonal tides and currents and stay mindful of the dangers at both the top and bottom of local cliffs.

To keep in touch and to purchase our merchandise, please check out our website <https://plrb.com> or our social media: Twitter @PLIRBRescue; Facebook @PettLevelRescueBoat and Instagram @pettlevelindyrescueboat



*Get active, get involved*



## Rye Harbour Nature Reserve

# Weekly Wellbeing Walks

Enjoy the outdoors with a morning of gentle walking across Rye Harbour Nature Reserve. Suitable for all abilities.

**Wednesdays 9:45 am – 11 am**

Meet at the shelter next to the public toilets in Rye Harbour village, close to the bus turning circle and bus stop – ideal for coming by bus

**Booking isn't needed but suitable footwear is!**

Information about all our events can be found here:  
[sussexwildlifetrust.org.uk/whats-on](https://sussexwildlifetrust.org.uk/whats-on) or scan the QR code:



**Sussex**  
Wildlife Trust

Registered Charity No. 207066



[rye.sussexwildlifetrust.org.uk](https://rye.sussexwildlifetrust.org.uk)



## **Rye Food Bank**

You can find out more about Rye Food Bank, and how the Trussell Trust works, and ways you can offer support, here:  
[rye.foodbank.org.uk](http://rye.foodbank.org.uk)    [trusselltrust.org/what-we-do](http://trusselltrust.org/what-we-do)

Cam makes monthly doorstep collections of food.  
If you are donating, could you email him so that he can draw up a collection schedule.

*Donald Cameron-Clarke*  
01797 226414    [dcc.omh@gmail.com](mailto:dcc.omh@gmail.com)

---



GATHER YOUR FRIENDS FOR A FUN NIGHT OUT!

# QUIZ NIGHT

Form a team of 6 and get ready to battle it out for a host of wonderful prizes!

Friday 17th March | 7:30 PM

Rye Rugby & Football Club, New Road, Rye TN31 7LS

Tickets £10 with a delicious meal (including vegan option)  
Licensed bar | Hot drinks available

To register your team please email  
[fundraising@ryehospital.org.uk](mailto:fundraising@ryehospital.org.uk) or call 01797 228842



In aid of Rye, Winchelsea & District Memorial Hospital Ltd  
Charity no. 1014232

[fundraising@ryehospital.org.uk](mailto:fundraising@ryehospital.org.uk)



## Winchelsea Church and Town Calendar

### March 2023

Thursday 2nd	Bible Study - New Inn - 6pm
Friday 3rd	World Day of Prayer Service - Rye - 10.30am
Saturday 4th	Church Market 10.30am till 12
<b>Sunday 5th</b>	<b>8am: BCP Holy Communion at Winchelsea</b> <b>9.30am: Parish Communion at Pett</b> <b>11am: Parish Eucharist at Winchelsea</b>
Wednesday 8th	Second Wednesday Society - New Hall - 2.30pm
Saturday 11th	Winchelsea Film Night - New Hall - 6pm for 7
<b>Sunday 12th</b>	<b>8.30am: BCP Holy Communion at Pett Level</b> <b>9.30am: Parish Communion at Icklesham</b> <b>11am: Parish Eucharist at Winchelsea</b> Charity Spring Pub Quiz - New Inn - 7pm
Friday 17th	Wine Society Talk - New Hall - 6pm for 6.30
Saturday 18th	Archaeological Society Walk - from Beacon - 11am Winchelsea Arts Concert - St Thomas' Church - 7.30pm
<b>Sunday 19th</b> <i>Mothering Sunday</i>	<b>9.30am: Parish Eucharist at Pett</b> <b>11am: Parish Eucharist at Winchelsea</b>
Saturday 25th	FOAM AGM - Court Hall Garden Society Spring Show - New Hall - 2pm
<b>Sunday 26th</b>	<i>Clocks go forward</i> <b>9.30am: Parish Communion at Icklesham</b> <b>11am: Parish Eucharist at Winchelsea</b> <b>3pm: Ecumenical Service at Wesley's Chapel</b>
Friday 31st	Lent Fellowship Lunch - W B Community Hall - 12.30 for 1pm
Saturday 1st April	Church Market 10.30am till 12 Garden Society Talk - New Hall - 2pm
<b>Sunday 2nd April</b> <i>Palm Sunday</i>	<b>8am: BCP Holy Communion at Winchelsea</b> <b>9.30am: Parish Communion at Pett</b> <b>11am: Parish Eucharist at Winchelsea</b>
Friday 7th April	<i>Good Friday</i>
Sunday 9th April	<i>Easter</i>
Monday 10th April	Mayor Making Ceremony - St Thomas' Church - 11am

### Further ahead

Sat 6th May	Coronation
Sat 12th August	Winchelsea Summer Fete





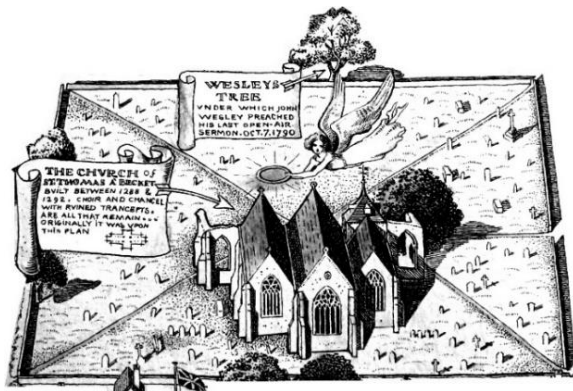
**Please send copy for the April Magazine to  
[ryeview@gmail.com](mailto:ryeview@gmail.com)  
before Monday 27th March**

For Winchelsea Beach information go to  
[winchelseabeachcommunityassociation.co.uk](http://winchelseabeachcommunityassociation.co.uk)

For Winchelsea information go to  
[winchelsea.com](http://winchelsea.com)

For more information about the Church go to  
[winchelsea-icklesham-churches.org.uk](http://winchelsea-icklesham-churches.org.uk)

For weekly news from the local area go to  
[ryenews.org.uk](http://ryenews.org.uk)



## **Rector of Winchelsea and Icklesham and Priest in Charge of Pett**

The Revd Jonathan Meyer  
The Rectory, St Thomas Street, Winchelsea TN36 4EB  
01797 226254 [revdjonathan@btinternet.com](mailto:revdjonathan@btinternet.com)  
The Rector's day off is Monday

## **Winchelsea Churchwardens**

Charlotte Beecroft  
Burrin House, North St TN36 4HX  
01797 223159 [ccmburrin@gmail.com](mailto:ccmburrin@gmail.com)

Celia King  
Stargazer, Morlais Place TN36 4LG  
01797 227858 [kingcelia54@gmail.com](mailto:kingcelia54@gmail.com)

## **PCC Secretary**

Angela Hill  
Friars Halt, Friars Road TN36 4ED  
01797 226325 [angelam.hill@btinternet.com](mailto:angelam.hill@btinternet.com)

## **Parish Treasurer**

*Vacancy*

## **Gift Aid**

David Jefferies  
Wee Five, Sea Road TN36 4LH  
01797 222904 [pamela.jefferies@sky.com](mailto:pamela.jefferies@sky.com)

### **Electoral Roll Officer**

Jeremy Naylor  
White Cottage, Friars Road TN36 4ED  
07985 734936 [jrnaylor@gmail.com](mailto:jrnaylor@gmail.com)

### **Organist**

David Birchenough  
07840 595338 [daviddaorganist@icloud.com](mailto:daviddaorganist@icloud.com)

### **St Thomas' Choir**

Marion Lovell  
7 Oast House Field, Icklesham TN36 4BP  
01424 815247 [marion@abingworth.plus.com](mailto:marion@abingworth.plus.com)

### **St Thomas' Primary School**

*Headteacher* Carol Gardiner  
Friars Road TN36 4ED  
01797 226479  
[office@st-thomas-winchelsea.e-sussex.sch.uk](mailto:office@st-thomas-winchelsea.e-sussex.sch.uk)

### **St Richard's Chapel Warden**

Mary Parker  
Solstice, Sea Road TN36 4LH  
01797 229798 [parkermary848@gmail.com](mailto:parkermary848@gmail.com)

### **Friends of Winchelsea Church**

*Chairman* Ben Chishick  
Tower Cottage, Barrack Square TN36 4EA  
01797 226653 [towercottage@btinternet.com](mailto:towercottage@btinternet.com)  
*Treasurer* Stephen King  
Stargazer, Morlais Place TN36 4LG  
01797 227858 [stephenking408@btinternet.com](mailto:stephenking408@btinternet.com)

### **Parish Magazine**

*Editor* David Page  
4 Kent Close TN36 4EX  
01797 226524 [ryeview@gmail.com](mailto:ryeview@gmail.com)