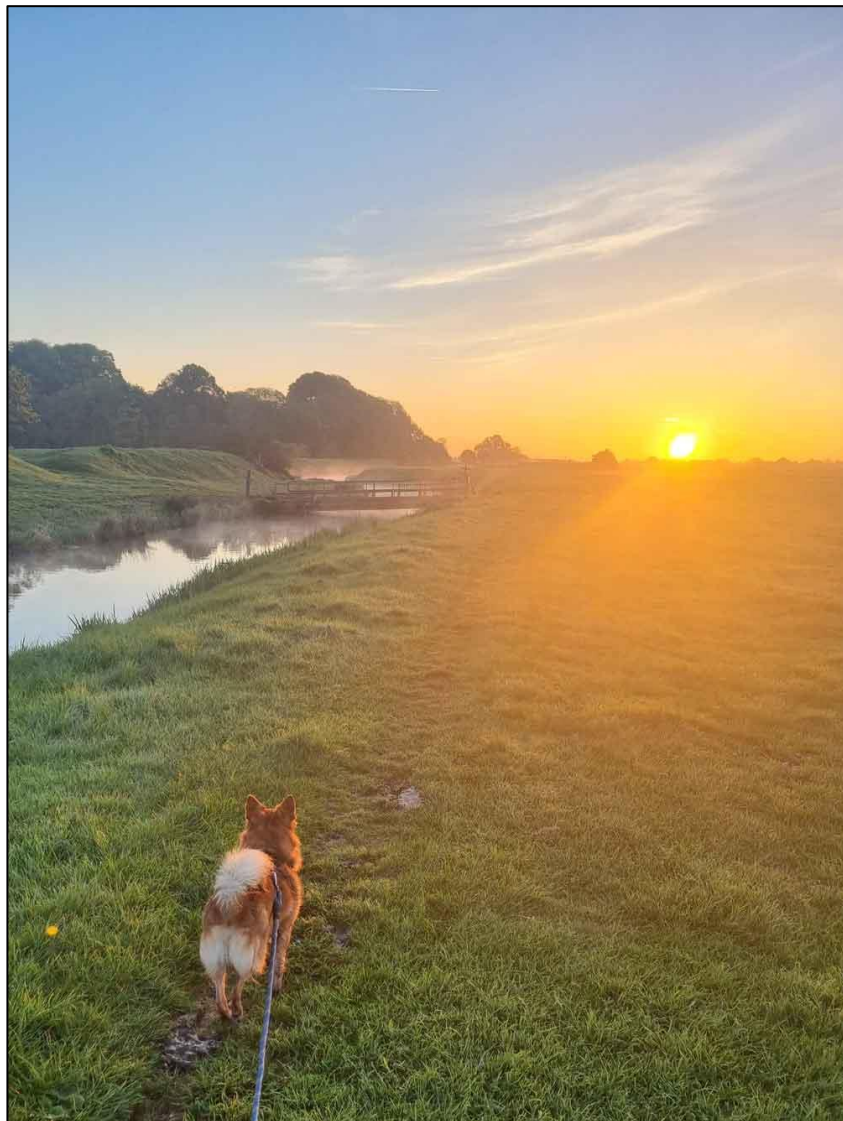


# WINCHELSEA PARISH MAGAZINE

1st June 2022



Freddie Moss walks towards the sunrise *Julia Moss*



Thursday 2nd June

## **Jubilee Beacon Lighting**


Reception at Winchelsea New Hall from 8pm  
Beacon Lighting at 9.45pm

*Please check [winchelsea.com](http://winchelsea.com) for any  
last-minute updates*

Friday 3rd June at 3pm

## **Organ Concert**

Come and join  
resident organist David Birchenough  
at St Thomas' Church  
as he plays standard tunes of the decades with a  
singalong in celebration of the Queen's Platinum Jubilee  
followed by tea and cake - entry by donation



Friday 3rd June 3pm to 5pm  
at Winchelsea Beach Community Hall

**Tea and Jazz Afternoon**  
with The Creole Jazz Band

Tickets £10  
Ring Carol 01797 226583

Saturday 4th June from 7.30pm  
at Winchelsea Beach Community Hall

**Dance**  
to the Bellhouse Band  
and enjoy a fish and chip supper  
Tickets £15  
Ring Carol 01797 226583

A decorative purple border with a white wavy line and small white stars. At the top, there is a string of white stars and a bunting banner with alternating red, white, and blue triangular flags.

Saturday 4th June 10.30 am till 12

**Jubilee Church Market**


at St Thomas' Church

A sale of scarves and handbags will also take place  
to raise funds for the church

Saturday 4th June 1pm to 4pm

**Treasures from the Museum**

A sale of engravings and watercolours  
to raise funds for the Museum  
will be held in the Court Hall  
The works all feature Winchelsea  
buildings and scenes  
Coffee and tea will be available



Sunday 5th June at 11am

## **Service of Thanksgiving**

A Service of Thanksgiving at St Thomas' Church  
in celebration of  
Her Majesty's 70 year reign  
with Parish Eucharist

Sunday 5th June from 1pm

## **Big Jubilee Picnic**

on Winchelsea Cricket Field  
Bring your picnic tables, chairs and rugs  
and your own picnic - or buy from the BBQ laid on  
by the New Inn  
Home-made ice-cream, soft drinks, beer and wine for sale  
including sparkling wine from the  
Charles Palmer Vineyard  
Hooe Silver Band will play during the picnic  
and at 4pm  
East Surrey Morris Dancers will perform  
*Please check [winchelsea.com](http://winchelsea.com) for any  
last-minute updates*





## **Reflections from the Rectory**

From 2nd June the Platinum Jubilee for the reign of her Majesty Queen Elizabeth II will be celebrated. The vast majority of us have only known one monarch during our lifetimes and her extraordinary sense of duty and service over those years is an example to all of us.

Celebrations will be taking place in different ways across the whole country and in Winchelsea the programme includes lighting the beacon, an organ concert in church, a special church market and, on Sunday, a Parish Eucharist attended by the Mayor and Corporation followed by a town picnic.

Her Majesty's reign extends over many years of different fortunes for the United Kingdom and Commonwealth. Stretching from the last years of rationing (I can still remember the old ration books in my mother's desk) to the recent triumph of the London Olympics and through periods of national difficulty and challenges.

She has remained a steadfast symbol over the years. Her sense of duty and dignity has been a constant for the nation. While there are always some voices of protest for most of us, she is a symbol that unites the nation.

As it happens the Sunday of Jubilee weekend is also an important day in the life of the church. This year Pentecost falls on the 4th of June. Pentecost, which was more commonly referred to as Whitsun, falls fifty days after Easter.

It commemorates the date on which the early church believed that the Holy Spirit was poured out from above. The Bible story tells us of a sound like a mighty rushing wind and that the disciples received “divided tongues” as of fire upon their heads. Incidentally the tongues of flame are what inspired the head-covering called a mitre that bishops wear today.

Christian belief is that the Holy Spirit is a spirit of unity, a spirit that brings us back together as a holy people under God. It is sometimes thought of as the birthday of the church, when God, Father, Son and Holy Spirit call upon the church to be a witness to the presence of God throughout the world in the action of the Holy Spirit.

It is true that today that vision of unity and harmony is not something that we perceive as we look at the state of the world, but it is still a Christian hope and Christian belief that in the end we shall be united in Christ by the Holy Spirit.

Political unity is not something that seems especially close in our nation at present, but I truly believe that for most people her Majesty represents something around which we can all gather and celebrate. She has served with a great sense of dedication, duty and humility and it is appropriate that we should celebrate her Jubilee on the day the Holy Spirit is poured out upon us.

*Jonathan*

---



## **A Month of Garden Openings**

### **Saturday 11th June 10.30 to 4pm**

Eight Winchelsea Beach gardens will be opening for St Michael's Hospice. Combined entry £7.50.

### **Saturday 18th June 11am to 5pm**

Ten Winchelsea gardens will open for the National Garden Scheme. Combined entry £8, children free. Full information on the Winchelsea pages of [ngs.org.uk](http://ngs.org.uk) and in a blog entry at [winchelsea.com](http://winchelsea.com)

### **Sunday 19th June 2pm to 5pm**

Following on from the Saturday NGS opening, eight of the Winchelsea gardens will open on Sunday afternoon for the Friends of the Hospital at Rye. Combined entry £8, children free. [ryehospital.org.uk](http://ryehospital.org.uk)

Garden Society hold their Rose Show and Coffee Morning at the Court Hall on Saturday 11th June at 10.30am.





## **Open Garden for Ukraine**

Beauchamps Garden, Float Lane, Udimore, TN31 6BY, for many years open for the NGS, will have a special opening on Saturday 11th June from 3pm to 5pm to raise funds for the Ukraine Emergency Appeal.

No tickets for entry, but you'll be invited to make a donation towards the Appeal. There will be some home-propagated plants for sale, also tea and cakes. Plenty of parking in a nearby field.

Matty and Richard Holmes look forward to welcoming you here.

---



## **The circles are blooming**

The yellow rattle has finally come into its own and the churchyard circles are blooming with a variety of flowers and grasses and more to come. Ox-eye daisies, veronica, corn flowers and salvias are the main ones on show at the moment. The rain at the end of May has been so beneficial. People seem to be really enjoying the little meadows, as we had hoped.

Also, our information poster is now up in the church porch, so please go and have a look. Eventually we hope this will go into a new exterior noticeboard, when the old one is replaced. There is a churchyard map and notes on key species in the town.

Bees have returned to the east wall, having swarmed in mid-May, and spent the night above the back door of the Rectory. We should all be pleased to see them back as they are such vital pollinators. We now have two colonies and you can see the workers busily going in and out looking after their queen. Bees are often to be seen on the yellow rattle too, which is drawing them in.

The swifts are screeching around as usual, looking for nest sites after their long journey from Africa, and

feeding on insects high up in the air. I am sure I'm not the only one to say how much I would miss them, if they passed us by.

We are so lucky to have as a town centre such a beautiful churchyard, used and appreciated by us all.

Follow us on Instagram at  
[instagram.com/winchelseachurchyard](https://www.instagram.com/winchelseachurchyard)

*Shirley Meyer*





## May Bird Sightings

*Robbie Gooders reports:* The first Swifts over Winchelsea were seen by Jonathan and Shirley Meyer and Paul Youtlen on 3rd May and then on 5th May our Winchelsea Church Swifts were seen by Robbie Gooders and Jonathan and Shirley.

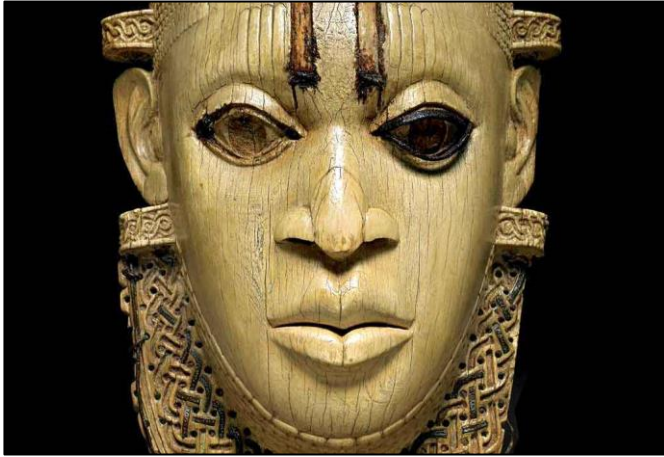
Also on 5th May this Red Kite was caught on camera by John Willsher, lunging on a rabbit in the Panel Valley.

After 5th May, Swifts were recorded as returning all over East Sussex and on 6th May, two White-tailed Eagles were seen over Lewes and Ditchling Beacon.

Closer to home, a Spotted Flycatcher was recorded at Rye Harbour Nature Reserve which is very welcome news since I haven't personally seen one for many years. Back in the early 90s they used to breed in St Thomas' churchyard.

Cuckoos have been heard in the town though not seen, and if anyone hears a Nightingale over the next couple of months, please let me know and I will pass this information on to the Sussex Ornithological Society who are holding a survey on them this year.

---



## **Loot - Britain and the Benin Bronzes**

Barnaby Phillips returns to speak to Literary Society on Friday 17th June at 7pm for 7.30 in the Court Hall

A TV and radio journalist for 27 years, mainly in Africa, he was a correspondent for the BBC in Mozambique, Angola, Nigeria and South Africa. 'Loot- Britain and the Benin Bronzes' is Barnaby's second book, after 'Another Man's War' (2014), which is also a tale of the legacy of the British Empire in Nigeria.

Barnaby is the Director of Communications for the Elephant Protection Initiative (EPI), an alliance of African countries with common policies on elephant conservation. He now lives in London.

[winlitsoc@gmail.com](mailto:winlitsoc@gmail.com)

---



Clair Obscur is a female-led theatre company based in Kent. Their latest production, “S.O.E.”, features the characters Vera Atkins and Noor Inayat Khan, as the company tell the gripping story of these two remarkable women and their role in S.O.E.

The WW2 Special Operations Executive is tasked with espionage, sabotage and reconnaissance. As a wireless operator, life expectancy is six weeks. “Madeleine” is the codename for one such agent. Flown by moonlight to occupied France, her job is to keep her circuit connected with London. Gestapo Officer Josef Kieffer is on her trail and the net is closing. Now the war is over, Vera Atkins is trying to uncover the truth. Of all the twelve cases of missing women agents, one haunts her the most: “Madeleine”, the Indian princess, Noor Inayat Khan.

**S.O.E comes to Winchelsea  
on Friday 24th and Saturday 25th June  
at 7.30 pm at the New Hall**

YouTube trailer: [youtube.com/watch?v=f7uIZ-5-3Us](https://youtube.com/watch?v=f7uIZ-5-3Us)

Tickets: [wegottickets.com/ClairObscur](https://wegottickets.com/ClairObscur)

[clairobcur.co.uk/wp/soe/](https://clairobcur.co.uk/wp/soe/)





## **The Fun Scale**

Welcome to Jubilee Month. After last Second Wednesday I came away as usual, richer in friendships and more knowledgeable in my understanding of this great, wide, world.

Firstly, to a big round of applause, we welcomed Tessa Potts back to her rightful place amongst us, after a two month Covid enforced absence. And then Paul Youlten, our May Speaker, took to the floor and explained using the example of Scottish Country Dance, the psychology of fun, the different effects that our own brain chemicals have on us and the anthropological instincts that drive social cohesion and identity, associated with dance.

We learnt that there is a Fun Scale and that the things we enjoy, fall into one of two different categories. Type 1 fun is instant, instinctive and requires little planning or learning. Type 2 fun, is based around the achievement and enjoyment eventually gained from tuition, practice and performance of a task, repeatedly and often communally.

After the history and benefits of Scottish Country Dance, we were treated to a demonstration by Maddy Coelho and her team. We enjoyed Type 1 fun, watching a show and tapping our feet to the music; while they

had Type 2 fun, performing as a synchronised group, after learning, and developing a skill. Different to other forms of dance, Scottish Country Dance gives the practitioner the rare combination and benefits of dopamine, oxytocin, serotonin and endorphins.

Type 1 fun will be our Jubilee Picnic on the 5th, a happy communal event, celebrating and sharing food and wine together. My Type 2 fun will come in the form of planning, cooking and preparing for the afternoon.

**Dr Geoffrey Mead returns to Winchelsea as our June Speaker. He will be telling us about the pioneering rewilding project at Knepp Castle.**  
Wednesday 8th June at 2.30pm in the New Hall

Since 2001, this 3,500 acre estate in West Sussex differs in its approach, by allowing nature a completely free hand to develop its own functioning ecosystem. The crucial difference at Knepp is that their vision is to be a site for re-establishment rather than reintroduction.

Their wait and see approach has witnessed many rare and endangered birds and insects return to Sussex. The UK's largest population of Purple Emperor butterflies is at Knepp and the occasional visits of migrating storks, one of Western Europe's rarest birds, are on the rise.

On one of Paul's graphs, he showed that social gatherings were more important for our general health and well-being than stopping smoking, taking exercise or even medication. So mark the 8th June large in your diaries and come and join us at Second Wednesday Society.

*Natasha Robinson*

Subscription for 2022 is £15  
Homemade afternoon tea £2  
Visitors and guests welcome £5

[2ndWeds@gmail.com](mailto:2ndWeds@gmail.com)

---



## **A Methodist Musical Meditation**

Hymns, prayers and thoughts from the Methodist tradition with the Revd Philip Wagstaff - and a scratch choir led by Stephen Page - in the historic sacred space of Wesley's Chapel.

Sunday 19th June at 5pm, with a singing workshop from 2.30pm for those who wish to join the choir - further information from [spage999@btinternet.com](mailto:spage999@btinternet.com)

The Chapel will be open to visitors on Saturday 18th June during the Open Gardens day.

This year's Anniversary Celebration Day is Sunday 17th July. 3pm at the Chapel preceded at 2.30pm by hymn singing under the Wesley Tree.

[winchelseachapel.org](http://winchelseachapel.org)

---



## **Seeking a Membership Secretary**

The Friends of Winchelsea Church, a registered charity whose aims are to preserve the fabric and heritage of the church which is a central feature of the town, are looking for an honorary membership secretary to support their work.

The Council of The Friends meets quarterly and there is an AGM usually in May. The Membership Secretary would ideally be familiar with email, Word, Excel and using a database and would liaise with the chairman, secretary and treasurer and attend the council meetings.

If anyone can help, please email Dr Ben Chishick at [towercottage@btinternet.com](mailto:towercottage@btinternet.com)

The AGM of the Friends of Winchelsea Church will be on Saturday 9th July at 10.30am in the church.

---



## **Art, Craft and Design Group**

An Art Group is starting to re-emerge after the pandemic. There is clearly a need for a creative body in Winchelsea.

Following three informal meetings over the last few months, it has been agreed that the new group will be a loose alliance of people interested in furthering their skills by means of a variety of workshops, demonstrations, exhibition visits and social events.

There will be no formal committee or timetable of events to start with and we hope to grow organically. If you would like to be on our contacts database please get in touch with me - [shirleymeyer@btinternet.com](mailto:shirleymeyer@btinternet.com) - with your email address. You will be notified of upcoming workshops by email and posters and of exhibition outings too.

To kick start things, I am hoping to run the following half-day workshops, assuming a sufficient number of people sign up:

Wednesday 6th July 10am-12noon  
Marbling Paper

Wednesday 3rd August 10am-12noon  
Mixed Media Still Life

Saturday 17th September 2pm-4pm  
Life Drawing with model

Each session will cost £20 each, which must be paid in full when booking to ensure a place. Details about each course will be coming out very soon. Please contact me on the above email address for further information and to sign up.

Many thanks, *Shirley Meyer*

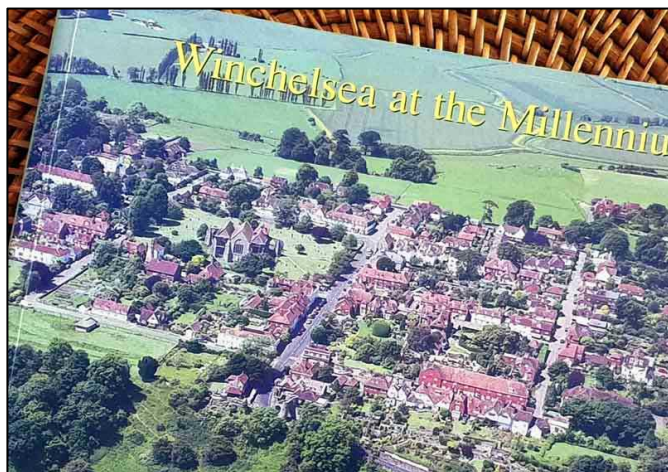


## **Edith Swan Neck**

A goodly crowd gathered in Winchelsea churchyard on 14th May to watch Circo Rum Baba perform the first act of ‘1066, What Women?’ This light hearted romp through history focussed on the wife of King Harold and the events leading up to the Battle of Hastings.

The cast and many of the audience then walked on to Wickham Manor for part two, and to the Queen’s Head Icklesham for the conclusion. This outdoor theatre event was a celebration of the newly regenerated 1066 Country Walk.





## 25 Years On?

‘Winchelsea at the Millennium’ is a wonderful book, produced by Melvyn Pett and Dominic Leahy recording the social history of Winchelsea in the year 2000.

This was a very popular record of the then residents and life in the town. If you don’t know about the book or haven’t seen a copy, then visit Winchelsea Museum to view this treasured document of the town’s social history.

During the Mayoral Reception, discussions spoke of the ongoing changes and developments in Winchelsea and the idea was born of producing an updated version of our social history – Winchelsea 25 Years On...

It is suggested that we aim for publication in 2025 as this project will take time to organize and bring to fruition. The concept has the initial support of David Merrifield, Mayor of Winchelsea and Jo Turner, Curator of Winchelsea Museum. along with a number of residents.

We now need to know the views of more residents. Do you think this is a good idea ? Do you have an interest or skills that can be supportive of this project? Please let the editor know your thoughts.

01797 226524 [ryeview@gmail.com](mailto:ryeview@gmail.com)



# PEASMARSH CHAMBER MUSIC FESTIVAL

23-26 June 2022

Anthony Marwood / Richard Lester / Sally Beamish /  
James Crabb / Magnus Johnston / Ori Kam /  
Hannes Minnaar / Heath Quartet / 12 Ensemble

*Inspiring music in beautiful surroundings with concerts in Peasmarsh,  
Rye & Winchelsea*

BOX OFFICE 01797 253178 [www.peasmarshfestival.co.uk](http://www.peasmarshfestival.co.uk) East Sussex

[peasmarshfestival.co.uk](http://peasmarshfestival.co.uk)



## **Winchelsea Anniversaries**

### **60 Years Ago**

Winchelsea's need of a suitable and acceptable by-pass has been pressed on various responsible authorities on many occasions since as long ago as 1904. In 1962 the Ministry of Transport proposed yet another solution to this ever recurring problem.

On 16th July in that year a notice was issued under the Highways Act, 1959 announcing 'the proposed diversion of the trunk road at Winchelsea'. The Ministry's explanation of the problem still applies sixty years later.

The statement read: 'Where the [A.259] passes through Winchelsea the carriageway is only from 15 feet to 18 feet wide and the road is tortuous. On its eastern approach to the town it climbs the steep Strand Hill leading to the ancient Strand Gate which is so narrow and low that only cars and single-deck buses can pass through it.

'All heavy traffic has to take an alternative route via Tanyard Lane and Ferry Road (sic). This route which includes a hairpin bend is also unsatisfactory. Of the plans which have been examined it is considered that a new route to the south-east of the town presents the best solution to the problem.

'This would commence on the trunk road about fifty yards south of Strand Bridge and pass between the cliff and the Royal Military Canal to re-join the trunk road at the southern end of German Street.

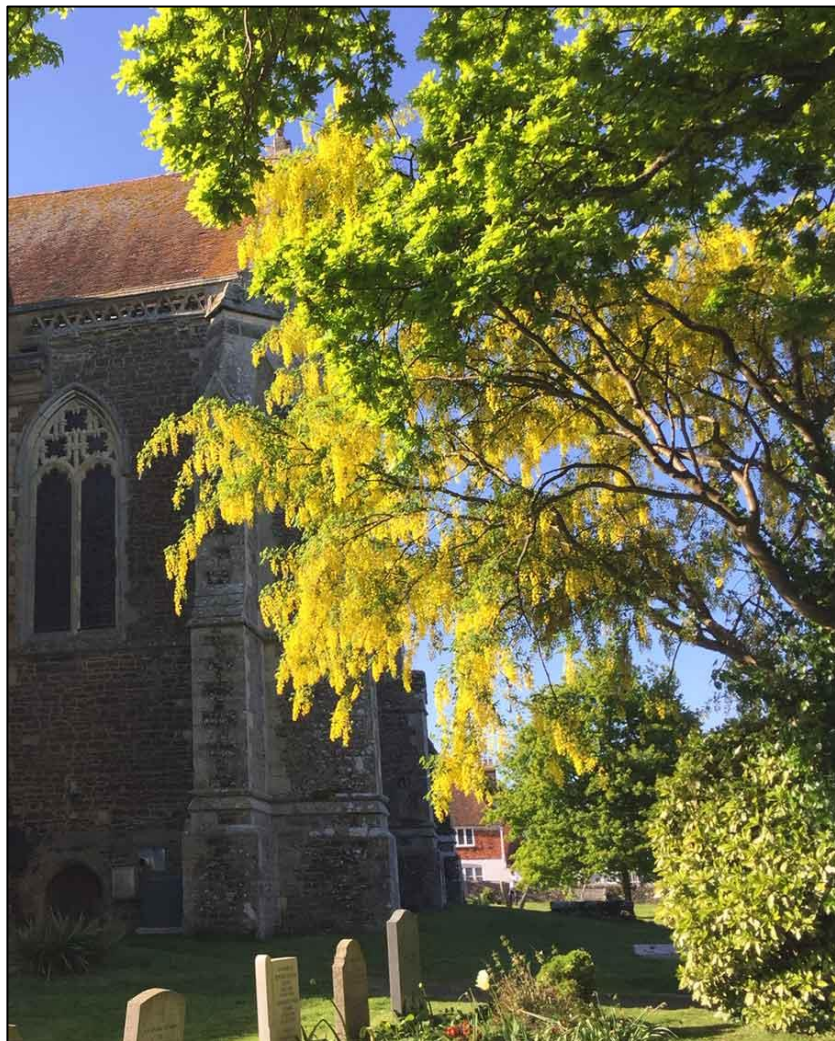
'The new road will have a 24 foot carriageway in an overall width of 40 feet and by forming a continuous link round the town will avoid the need for roundabout junctions. This will enable trunk road traffic to flow smoothly. When the new road is built careful planting of trees should ensure that the amenities of the town are not harmed'.

How any official or authority could imagine that it would be possible to obtain a forty foot width when climbing the cliff to finish at what must have been the southern end of Monks Walk (by the St John's Hospital gable), remains a complete mystery. The plan was never remotely viable and it was not long before it was joined in the same state of oblivion as all other proposals over more than a century.

That is, of course, with the minor exception that, ten years after this strange proposal, the trunk road was diverted to Rectory Lane, Ferry Hill and Tanyard Lane.

*Malcolm Pratt*

---



*Sandra Mackenzie Smith*





## **Pub Quiz for FOAM**

On 22nd May pubs around the country hosted 'The World's Biggest Pub Quiz'. Publicans named a charity of their choice to support, and in the case of the *New Inn* the charity was FOAM - the Friends of the Ancient Monuments. The bars were packed with contestants and £370 was raised.

---





## **Conservation Society**

*An edited version of the Chairman's report given at this year's Conservation Society AGM.*

The objects of the Society are to support Winchelsea residents to maintain the historic and beautiful built environment of this town, and to protect our green spaces. We have commented on numerous published planning proposals over the last three years, supporting residents in Back Lane, Friars Road, Barrack Square, Hiham Gardens, and North St.

*Glebe* in St Thomas' St has undergone the most high-quality, sympathetic restoration helping to prevent further structural decay in an iconic building. The repairs have enabled the house to survive and, while not finished yet, the improvement in the external appearance of this lovely house is a delight to see. The owner has been supported on the Rother DC website by the Society.

The Friars Rd development has been beset by a firm that produced plans universally opposed by all residents involved. Matters went so far as the National Appeals procedure in Bristol. All the objections from residents and the Society were included in the judgement and as a consequence the developer sold up. We now await the

plans of a new developer. A different sort of challenge to the built environment are unoccupied and deteriorating houses in the Conservation Area: *No 3. The Five Houses*, North St has been let go for 15 years. *Martens*, St Thomas' St has been unlivd in for a similar period of time with shrubs growing out of the chimney stack top. Rother District Council have been notified on numerous occasions regarding both dwellings. Definitive action is what we are pursuing with them.

We have also expressed concern about the state of some Ancient Monuments in the town. The town wall in Rookery Field is being undermined in some parts by badgers and some sizeable stones are falling down the cliff. There is also a risk of damage from nearby trees.

Greyfriars monastery ruin is another registered Ancient Monument, but has for decades been on the Historic England national 'At Risk' register. One area of masonry over the monks' door collapsed two years ago, when a sapling growing in the walls was blown over in a gale. Its roots pulled down stones in the wall.

The infill of the monk's door into the chapel is at least 10 degrees from the vertical and is slowly moving outwards. There is no legal clout for Historic England to insist that work to preserve privately owned Ancient Monuments must be carried out. Our MP has been alerted to this gap in legislation and we are following this up.

Gas and electricity costs are going up and listed buildings may not be easy to insulate against cold weather. We are going to push for the use of different types of thin double glazing, if newish not old glass, needs replacing. We need from local government a more flexible approach to the use of modern double glazing. This also is an issue for our MP. The bottom line for listed buildings is that they need caring for by sympathetic owners, and allowing these building to become undesirable in terms of heat retention will make them difficult to retain their value.

*John Spencer     Chair*



## Free Guided WAS Walks

Archaeological Society walks are open to all who are interested - they start at the Town Well at 2.15pm and each tour lasts about 60 minutes. All are welcome. The next walk on Saturday 11th June will be repeated on Saturday 9th July. The title is 'The Winchelsea Area in the Front Line of the Nation's Defence'.

We will try and throw light on these quotes:

The History Press website says that "Winchelsea has claim, leaving aside the World War Two blitz, of being the most war-ravaged town in Britain

Petition to the King (1384) from the House of Commons asking "that some steps be taken towards the defence of Rye and Winchelsea, because if these towns be taken, which God forbid, the whole country would be destroyed". Why were these two towns so important?

In 1979, Gen. Robert H. Barrow, then commandant of the U.S. Marine Corps., uttered the famous phrase that “amateurs talk about tactics, but professionals study logistics.” Is there evidence near Winchelsea for the importance of logistics? See how warfare has developed - from look-outs on towers (shown on the town seal) to radar.

Further walks are planned on ‘Winchelsea and Pilgrimage’ in August and September.

Please email Andrew at [andrewscottb@aol.com](mailto:andrewscottb@aol.com) or Merv at [mervynhack@sky.com](mailto:mervynhack@sky.com) if you are interested in joining Winchelsea Archaeological Society, helping on the Committee or with research. You would be most welcome as, the greater the membership, the more we can do.





## Vineyard visit

Winchelsea Wine Society has a very few places left for the special visit to Winchelsea's own Charles Palmer Vineyard on Friday 8th July at 4pm

This opportunity is now for open for any other residents who may be interested in the event. From 4 o'clock there will be an approximately 40 minute accompanied walk around the vineyard (or alternatively a similar talk at the top of the hill for those who do not wish to take the walk).

There will then be a presentation and informal discussion in the cellar door room, in the course of which we shall be tasting four of Charles Palmer's wines - two contrasting blancs de blancs, their still chardonnay and their red pinot noir.

Charles Palmer's discounted charge for this is £15. If you would like to attend please contact [brianleonard779@gmail.com](mailto:brianleonard779@gmail.com)

Following this the next WWS event is planned for 7th October - which will be about the history of wine in Winchelsea - more details to follow nearer the date.

---





## **Little Shop Saturdays**

You may be aware that Saturday deliveries of newspapers and bread have been arriving late at the shop for a number of weeks. As a result, many early customers have had to return at a later time.

To help overcome this, from Saturday 4th June, we will be opening the shop at 9am every Saturday.

The shop will continue to open at 8am on all other days. All current closing times remain the same.

Thank you for your patience, support, and understanding.

*Nathan and Danny*

---





## **Children's Tennis in August**

Tim Henman and Dan Bloxham, head coach of the All England Lawn Tennis Club (AELTC), will provide free coaching to local children at the Rye Lawn Tennis Club on Tuesday 23rd August.

Children will be coached in the morning and there will be an opportunity for adults to be coached in the afternoon. The club coaches will also be available to coach children on the two padel courts.

With the particular focus for the day being to encourage children to take up the sport, the Club will also give away ten child memberships in a prize draw. The winners will be announced on the day. Parents and spectators are welcome too.

Details on how to book will be coming later.

---



## **Rye Food Bank**

The next Winchelsea collection date is Tuesday 21st June. If you would like to donate to the Rye Food Bank, please give Cam a ring, so that he can co-ordinate pick up from your doorstep.

Donald Cameron-Clarke 01797 226414

Monetary donations can be sent to Rye Foodbank at Barclays Bank - sort code 20-54-25 - account number 83501116; through the Jempson Foundation; or cheques to Rye Foodbank c/o 24 North Salts, Rye.

If you donate via the Jempson Foundation and are a taxpayer, gift aid can be applied, If you make a bank transfer, please do send a message (via [ryefoodbank@gmail.com](mailto:ryefoodbank@gmail.com)) so they know who it is from and can send a receipt, if required.

---



## **Patronal Festival**

The patronal festival - a celebration of St Thomas of Canterbury to whom Winchelsea Church is dedicated - will be held on Sunday 3rd July. The festival eucharist is at 11am and the Occasional Consort will sing the *Mass* by Antonio Salieri.

The president and preacher will be Bishop Nicholas Reade. Bishop Nicholas was formerly Archdeacon of Lewes and Hastings and, before retirement, Bishop of Blackburn.

---

## **Fellowship Lunch**

June Fellowship Lunch will be on Friday 24th. 12.30 for 1pm in Winchelsea Beach Village Hall. Anyone can come, there is no charge for the meal but donations are invited and we have to know who is coming for catering purposes. Please ring Mary Parker on 07927 107678 or 01797 229798 to book or for more information.



## Eric Streeton

Eric died on 24th May. Seen here in 2017 laying a wreath on the centenary the death of his uncle, Norman Streeton - named on the Winchelsea memorial - Eric came from a family with a long history in the town. His father was landlord of the Salutation Inn in Castle Street and they were bombed out when the building was destroyed in the Second World War.

Living afterwards in Rye, Eric became an officer of Winchelsea Corporation, serving as Sergeant at Mace from 2016 until this Easter, a role he was proud to undertake.

His recollections of Winchelsea life and his collection of photographs of the town are held at the museum and Streeton family memories feature in Malcolm Pratt's 'Winchelsea. A Port of Stranded Pride'.

Eric's funeral takes place at St Thomas' on Friday 17th June at 1pm

---

## Winchelsea Church and Town Calendar

### June 2022

Thursday 2nd	Jubilee Beacon Lighting
Friday 3rd	Organ Concert at St Thomas' - 3pm Tea and Jazz Afternoon at WB Community Hall - 3pm
Saturday 4th	Jubilee Church Market - 10.30am till 12 Treasures from the Museum - 1pm to 4 - Court Hall Dance at WB Community Hall - 7.30pm
<b>Sunday 5th</b> <i>Pentecost</i> <i>Whit Sunday</i>	<b>8am: BCP Holy Communion at Winchelsea</b> <b>9.30am: Parish Communion at Pett</b> <b>11am: Jubilee Parish Eucharist at Winchelsea</b> Big Jubilee Picnic - Cricket Field
Tuesday 7th	Mothers' Prayers - 10am - St Richard's
Wednesday 8th	Second Wednesday Society - 2.30pm - New Hall
Saturday 11th	Winchelsea Beach Hospice Garden Opening - 10.30am to 4pm Winchelsea Garden Society Rose Show - Court Hall - 10.30am WAS Town Walk - from Town Well - 2.15pm
<b>Sunday 12th</b> <i>Trinity Sunday</i>	<b>8.30am: BCP Holy Communion at Pett Level</b> <b>9.30am: Parish Eucharist at Icklesham</b> <b>11am: Parish Eucharist at Winchelsea</b>
Friday 17th	Literary Society - 7pm for 7.30 - Court Hall
Saturday 18th	NGS Winchelsea Garden Opening - 11am to 5pm
<b>Sunday 19th</b>	<b>9.30am: Parish Eucharist at Pett</b> <b>11am: Parish Eucharist at Winchelsea</b> Winchelsea Garden Opening for Hospital at Rye - 2pm to 5pm Methodist Musical Meditation - Wesley's Chapel - 5pm
Friday 24th	Fellowship Lunch - WB Community Hall S.O.E - New Hall - 7.30pm
Saturday 25th	S.O.E - New Hall - 7.30pm
<b>Sunday 26th</b>	<b>9.30am: Parish Eucharist at Icklesham</b> <b>11am: Parish Eucharist at Winchelsea</b>
Sat 2nd July	Church Market 10.30am till 12 Residents' Association AGM - New Hall
<b>Sun 3rd July</b>	<b>8am: BCP Holy Communion at Winchelsea</b> <b>9.30am: Parish Communion at Pett</b> <b>11am: Patronal Festival Eucharist at Winchelsea</b>

### Further ahead

Sat 9th July	Friends of Winchelsea Church AGM
Sat 16th July	Winchelsea Arts Season Launch
Sat 13th August	Winchelsea Summer Fete





Jubilee preparations:  
ironing the bunting

**Please send copy for the July Magazine to  
[ryeview@gmail.com](mailto:ryeview@gmail.com)  
before Thursday 30th June**

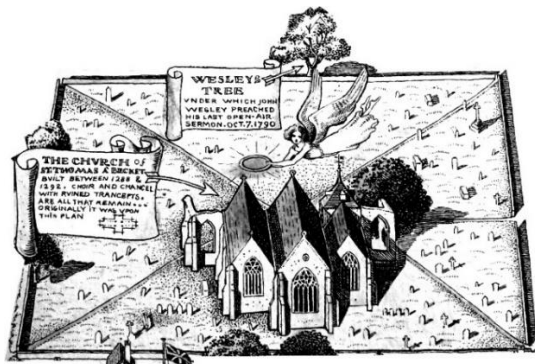
For Winchelsea Beach information go to  
[winchelseabeachcommunityassociation.co.uk](http://winchelseabeachcommunityassociation.co.uk)

For Winchelsea information go to  
[winchelsea.com](http://winchelsea.com)

For more information about the Church go to  
[winchelsea-icklesham-churches.org.uk](http://winchelsea-icklesham-churches.org.uk)

For weekly news from the local area go to  
[ryenews.org.uk](http://ryenews.org.uk)





## **Rector of Winchelsea and Icklesham and Priest in Charge of Pett**

The Revd Jonathan Meyer

The Rectory, St Thomas Street, Winchelsea TN36 4EB

01797 226254 [revdjonathan@btinternet.com](mailto:revdjonathan@btinternet.com)

The Rector's day off is Monday

## **Churchwardens**

Charlotte Beecroft

Burrin House, North St TN36 4HX

01797 223159 [ccmburrin@gmail.com](mailto:ccmburrin@gmail.com)

Celia King

Stargazer, Morlais Place TN36 4LG

01797 227858 [sake.king@hotmail.com](mailto:sake.king@hotmail.com)

## **PCC Secretary**

Angela Hill

Friars Halt, Friars Road TN36 4ED

01797 226325 [angelam.hill@btinternet.com](mailto:angelam.hill@btinternet.com)

## **Parish Treasurer**

Vacancy

## **Gift Aid**

David Jefferies

Wee Five, Sea Road TN36 4LH

01797 222904 [pamela.jefferies@sky.com](mailto:pamela.jefferies@sky.com)

## **Electoral Roll Officer**

Jeremy Naylor

White Cottage, Friars Road TN36 4ED

07985 734936 [jrnaylor@gmail.com](mailto:jrnaylor@gmail.com)

### **Organist**

David Birchenough

07840 595338 [daviddaorganist@icloud.com](mailto:daviddaorganist@icloud.com)

### **St Thomas' Choir**

Marion Lovell

7 Oast House Field, Icklesham TN36 4BP

01424 815247 [marion@abingworth.plus.com](mailto:marion@abingworth.plus.com)

### **St Thomas' Primary School**

*Headteacher* Carol Gardiner

Friars Road TN36 4ED

01797 226479

[office@st-thomas-winchelsea.e-sussex.sch.uk](mailto:office@st-thomas-winchelsea.e-sussex.sch.uk)

### **St Richard's Chapel Warden**

Mary Parker

Solstice, Sea Road TN36 4LH

01797 229798 [parkermary848@gmail.com](mailto:parkermary848@gmail.com)

### **Friends of Winchelsea Church**

*Chairman* Ben Chishick

Tower Cottage, Barrack Square TN36 4EA

01797 226653 [towercottage@btinternet.com](mailto:towercottage@btinternet.com)

*Treasurer* Stephen King

Stargazer, Morlais Place TN36 4LG

01797 227858 [stephenking408@btinternet.com](mailto:stephenking408@btinternet.com)

### **Parish Magazine**

*Editor* David Page

Rye View, The Strand TN36 4JY

01797 226524 [ryeview@gmail.com](mailto:ryeview@gmail.com)

