

# WINCHELSEA PARISH MAGAZINE

1st March 2022



*Ian Rowlands*



## Reflections from the Rectory

Ash Wednesday falls on the 2nd of March this year just as this magazine becomes available. Ash Wednesday is traditionally the beginning of Lent. A time of reflection in preparation for the Easter festival. In years gone by, most people would have given up meat and perhaps fish during this period.

But it wasn't just a question of giving something up for the sake of it. It was about limiting at least one thing about our lives in acknowledgement that we do not last forever and at some time we will have to face death. In that sense it was not only a matter of self-denial but a reminder of our own mortality and a preparation to be in God's presence and in the end to share in the glory of resurrection.

In the modern church we are more likely to be encouraged to think about what we might take up in order to make the world a better place rather than to simply deny ourselves. The emphasis is on reflection and self-evaluation. It is usual to run some sort of Lent course. As I was licensed here four years ago on Shrove Tuesday I did not have time to prepare a Lent course for my first Lent in the Benefice. For the second year we followed a course produced by the diocese which interviewed Christians from different backgrounds and reflected on what Christ meant to them.

In 2020 I showed a thought provoking film, “Beyond Good and Evil, Stories of Forgiveness”, in the Court Hall but the follow-up meetings had to be cancelled because of the Covid emergency.

Last year we gathered on zoom and ran our course over the Internet and several members of the community and parish contributed. If anything it was better attended than usual and I propose to hold this year’s course on zoom as well. It has the advantage that those for whom travel in the evening is difficult can attend in comfort. For those who are simply curious but do not want to attend an organised course in church a virtual meeting is attractive as there is no pressure to take part.

So if you have never joined anything like this before but are curious, do join in you won’t be asked to do or say anything – it’s much safer than a pantomime in that respect.

This year I am planning to follow the course prepared by the diocese, which is called “Comfort ye my people”. Each week is comprised of a reading and reflection by a different person, which is related to a work of art. There will be time for some discussion as well and we will end each session with Evening Prayer. Details of timings are as below.

*Jonathan*

---

## **Lent Course ‘Comfort ye my people’**

The Lent Course for 2022 will take place on Zoom on Wednesday’s during Lent, on 9th, 16th, 23rd, 30th March and 6th April. We will start at 6pm and expect to finish at about 7.15pm after Evening Prayer.

If you would like to join in please email Jonathan [revdjonathan@btinternet.com](mailto:revdjonathan@btinternet.com) and you will receive a link for each week. Details can be found on the diocesan website and Bishop Martin’s introduction is here: [youtu.be/RSqCD13DoZc](https://youtu.be/RSqCD13DoZc)

---



## **Ash Wednesday Service**

There will be a Benefice service of Holy Communion for Ash Wednesday with Imposition of Ashes on 2nd March at 6pm at St Thomas'.

## **Lent Lunches at Icklesham**

Icklesham are holding two Lent lunches this year, soup and cheese will be served and donations will support *Caring and Sharing* and the church respectively.

The dates are Thursday 10th and Thursday 31st March at 12 noon at Icklesham Village Hall. The first will be attended by the local Chairman of *Caring and Sharing*, the Revd Hugh Moseley.

## **The Gospel of St Luke on Zoom**

Last year we read the whole of Mark's gospel on Zoom during Holy Week and this year we will read the Gospel according to St Luke. It is longer than Mark and may take about two hours. If you are interested please let the Rector know. It is hoped that the Parish of Pett and perhaps people from other parishes in the Deanery may take part. Tuesday 12th April starting at 6pm Further details will be published nearer the time.

---



## Little Shop revived

The slick transfer of stock from the Farm Kitchen across the road to the Little Shop was completed in early February.

Congratulations to Nathan and Danny for all they continue to do to keep us all well provisioned, and particularly to Nathan, who has been on the job now for twenty years.

And, of course, major thanks to Anne Rumsey for continuing to make this vital local facility possible.

---



## **Garden Society Lecture Spring Show and garden visits**

The postponed lecture by Steve Edney has been rescheduled for 2pm on Saturday 12th March in the New Hall. The title is 'The Head Gardener's Home Garden'.

Steve was head gardener at *The Salutation* in Sandwich, then spent a while as consultant for the Cathedral gardens in Canterbury. Recently he started his own nursery, called *The No Name Nursery*.

This year's Spring Show takes place on Saturday 9th April from 2pm. Full details of what can be shown in each class are in the members' schedule. If you haven't got yours yet, they will be available at the Lecture.

The Society is planning visits to Wisley RHS Garden on 6th April and to Leonardslee on 25th May. Garden Socials will resume in April.

---



Choral and Instrumental Music performed by Students of



# King's College School Wimbledon



St Thomas' Church Winchelsea TN36 4EB  
**Sunday 20th March at 4pm**

Tickets online at [winchelsea-arts.org.uk](http://winchelsea-arts.org.uk)  
and at the door

**Winchelsea  
Arts**

**£16**  
free for under 18s



More information and online tickets at  
[winchelsea-arts.org.uk](http://winchelsea-arts.org.uk)



## **Platinum Jubilee in Winchelsea**

Preparations are coming on apace for Platinum Jubilee celebrations in Winchelsea this June.

On the evening of Thursday 2nd - the first day of the Jubilee Bank Holiday - the Beacon will be lit along with others around the UK and the Commonwealth.

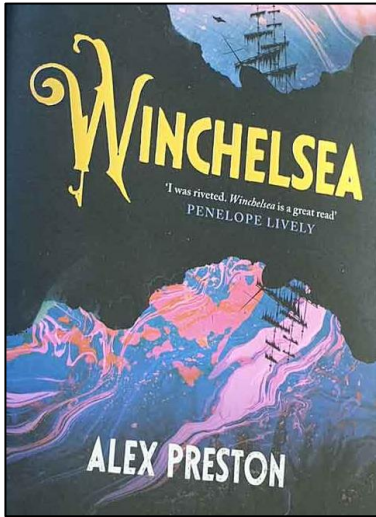
On Sunday 5th, communities around the nation are organising lunchtime picnics and we are planning one for Winchelsea, centred on the New Hall and the Cricket Field.

The Corporation is taking the initiative on this. Paul and Debbie from the *New Inn* will be laying on a BBQ so if you don't want to bring your own picnic you can buy food and drink. Charles Palmer Vineyards will have wine on sale, The Hooe Village Band will play and, to complete the afternoon, there'll be Morris Dancing.

There's plenty of scope for more events over the four-day Jubilee weekend and ideas from the town's clubs and societies would be great to have.

*David Page*  
*Mayor*





## Alex Preston at Lit Soc

On Friday 18th March, Literary Society will be meeting in the New Hall at 7 for 7:30pm.

The speaker will be journalist and author, Alex Preston, whose much acclaimed historical novel of smuggling intrigue - 'Winchelsea' - has just been published.

Copies of the book will be available for purchase, proceeds going to Winchelsea Museum.

Read Allan Massie's review in *The Scotsman* here [scotsman.com/arts-and-culture](http://scotsman.com/arts-and-culture)

Thanks to those who have already paid their £20 subs for 2022. Visitors and guests welcome at all meetings - £5 to include a glass of wine.

[winlitsoc@gmail.com](mailto:winlitsoc@gmail.com)

[winlitsoc.blogspot.com](http://winlitsoc.blogspot.com)

---



*Nicola Harris*

## **FOAM AGM 19th March**

The Friends of the Ancient Monuments and Museum of Winchelsea (reg. charity 1001486) hold their Annual General Meeting on Saturday 19th March at 10.30am in the Lower Court Hall.

### **Quiz**

The fundraising quiz was a great success (teams pictured here during an uncharacteristic moment of quiet concentration). FOAM chairman Stuart Raine was question master, Tony Davis set the questions and the FOAM committee laid on an excellent ploughman's supper. Around £1000 was raised to help with the upkeep of the town's medieval monuments and the Museum.

[winchelsea-foam.org.uk](http://winchelsea-foam.org.uk)

---



## **Cellar Tours for residents**

After an enforced two year break, we are hopeful of being able to resume our guided tours of Winchelsea's medieval cellars in 2022. These have always proved to be extremely popular and in our last year of operation in 2019 we welcomed a total of 785 people on the tours.

This year we are initially inviting Winchelsea residents only, and particularly new arrivals, to join one of our tours on Saturday 2nd April or Saturday 9th April, both starting at 11am. These tours are free although cash donations are always welcome. All proceeds from tours

go to FOAM, Winchelsea's very own conservation charity, or to Winchelsea Archaeological Society.

Since we have to put a limit on numbers attending, we ask that you pre-book a place by emailing your name(s), Winchelsea address and contact details, together with your chosen date, to [cellars@winchelsea.com](mailto:cellars@winchelsea.com) or by ringing Jean on 07596 182874, the "cellars hotline" now emerging from two years in cold storage. Regrettably we cannot accommodate dogs or very small children.

If you are interested in joining our team of volunteer guides, all of whom are Winchelsea residents, please come along to one of the tours to see how they work. However, I should be grateful if any potential new volunteers would let me know of their interest beforehand using the contact details above. The tours would not exist without the sterling work of our guides nor without the generous support of those residents who kindly open their cellars for us.

*Jean Owen*  
*on behalf of the Winchelsea Cellar Tours team*

---



*Jane Archutowska*



## WAS in the open air

Winchelsea Archaeological Society has a busy schedule lined up for 2022, largely in the open air; it contains walks, cellar tours, pottery analysis and a new project photographing features of ancient Winchelsea.

### Guided Walks

Start at the Town Well at 2.15pm and last maybe 75 minutes. All are welcome. They will begin on Saturday March 26th visiting 'The Remains of Iham'.

What do we know about Iham - the Cinque Port limb of Hastings? Was there a castle in Castle Field?

Where is St Leonard's Well?

See the remains of St Leonard's Church.

Did Iham predate the arrival of William the Conqueror?

A shortened version of this guided walk will then be repeated three times for the general public at monthly intervals on the second Saturday each month from April to June - 2.15pm at the Town Well.

Further WAS walks are planned in early June on 'Winchelsea and the Pilgrims' (to include a visit to



Greyfriars), and in September on 'Winchelsea in the Wars'. Public walks from July to October will be arranged after a review of those scheduled for April to June.

### **Cellar Tours**

WAS works with FOAM to provide guided cellar tours on each Saturday morning from April to the end of October.

### **Pottery analysis**

Recording of the 90 crates of pottery sherds from the Blackfriars Barn cellar is drawing to a conclusion. However there is a stream of items found in Winchelsea brought in to our experts. In recent months, this has included a Stone Age flint and a sherd from a fourteenth century Rye ware jug.

### **History recording**

The National Trust Heritage Records Online contains information on archaeological sites and historic buildings situated upon, or adjacent to, land owned by them; there are nearly 300 records for Winchelsea - these do not contain photographs or ten-figure GPS grid references. WAS hopes to start carrying out such recording later this year and is discussing details, such as training sessions, with the National Trust.

Please email Andrew at [andrewscottb@aol.com](mailto:andrewscottb@aol.com) or Merv at [mervynhack@sky.com](mailto:mervynhack@sky.com) if you are interested in joining the Society, helping on the Committee or the research.

You would be most welcome as the greater the membership, the more we can do.

---



*Debbie with Ade and Jennifer (Paul behind the bar)*

## **News from the New Inn**

We had a lovely surprise last month, when Adrian Edmondson, his wife Jennifer Saunders, and Ben Elton, popped into the *New Inn* for a drink and a meal. Earlier they had spent some time in Rye, before coming to Winchelsea to visit Spike's grave.....absolutely fabulous and charming people.

April 2022 sees the start of our fourth year in Winchelsea. Time has flown by despite all the challenges we have faced. We would like to thank all the community who have been brilliant in supporting our business. Hopefully, 2022 will see some normality returning for everyone.

As we emerge from the recent bleak winter months, from Monday 14th March we will be back to opening seven days a week. We also continue to offer our takeaway service.

Contrary to the odd rumour, we are delighted to confirm that we are here to stay. Winchelsea is a wonderful place to live, and we love the town and community. This is very much our home.

All our very best wishes, and hope to see you soon.  
*Paul and Debbie.*



## **Bill please...**

...a phrase I've heard so many times over my many years in hospitality; and now at Second Wednesday. In this instance, the Bill I refer to is our very own Mr Doherty. Renowned for his great knowledge, his extraordinary memory and his unique delivery, Bill's February talk was entitled "A Man and a Brother".

Most of you know him as a retired Consultant in Anaesthetics and Intensive Care, or for his inimitably eloquent vote of thanks at Literary Society. Less well known is his gift for foreign languages. We exchange emails about books or articles, which he always signs off in fluent Italian. As a proud Glaswegian with a great love of History, he devotes much of his time countering the notion that Edinburgh is the Athens of the North.

Bill's talk focused on the economics, the fashions, facts and figures, technical advances and even the randomness of the prevailing winds, that all played their part in forming the framework of the Slave Trade.

The banality of numbers, graphs and blue prints only emphasised, in the words of another famous Scot, Robert Burns, "Man's inhumanity to man". He laid bare the misery of up to twelve million people and the casual barbarity that reduced them to numbers on a balance sheet or an insurance claim.

As in its creation, its demise was another list of random factors converging to change the course of history yet again. Quakerism, Revolution and Marketing formed a powerful triumvirate. They paved the way for the Abolitionist Movement, political upheaval, industrial growth and one of the only powers allowed to women, a purchasing boycott.

But the deciding factor was of course profitability; when it no longer made financial sense, the Transatlantic Slave Trade finally came to an end.

March is a much anticipated, milestone month. The 1st is not only the Meteorological beginning of Spring, but this year, is also Shrove Tuesday. If you find it hard to buy into Spring yet, then Astronomical Spring is the 20th and the clocks change on the 27th. So whichever way you look at it, it's a month for joy and hope, pancakes and daffodils.

March also, will bring Mary Smith to us at SWS. During her time as Headteacher at Maidstone Grammar School for Girls, she discovered a remarkable archive detailing the history of the school during the Second World War. Helen Keen, Art Teacher at the time, had recorded, in sketches and watercolours, the everyday struggles faced by staff and pupils alike, during those dark days. Her talk is the inspirational story of "A Schoolgirl's War".

For those of you wondering about my choice of illustration this month, it's a reference to Billie Holiday's 1939 song, Strange Fruit. Nina Simone's 1965 cover, turned it into an anthem of the Civil Rights Movement. As my brother-in-law always says, "every day is a school day" and every Second Wednesday really is an opportunity to discover all sorts of wonderful and important things together.

*Natasha Robinson*

[2ndWeds@gmail.com](mailto:2ndWeds@gmail.com)

---



## **A Schoolgirl's War**

A Second Wednesday talk by Mary Smith.

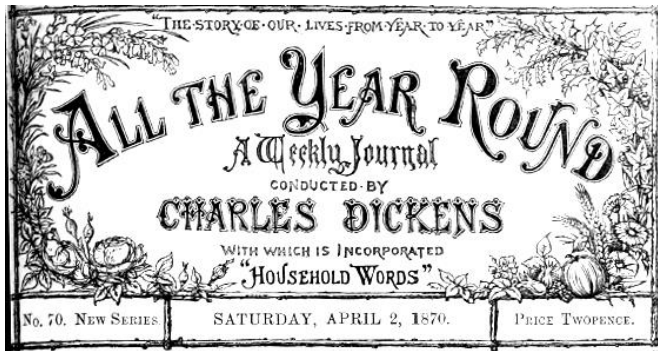
During the Second World War, school art teacher Miss Helen Keen set out to record the dramatic details of wartime school life in a vivid scrapbook of paintings and drawings. Past headteacher Mary Smith presents these along with moving and often surprising reflections of past pupils to create an evocative account of schoolgirls' lives during the war.

Wednesday 9th March at 2.30pm in the New Hall

Subscription for 2022 is £15,  
Homemade afternoon tea £2.  
Visitors and guests welcome £5.

Mary's book will be available to purchase for £10,  
the proceeds supporting Maidstone Grammar School  
for Girls.

---



## Weird, Lawless Winchelsea

Everyone who has walked along St Thomas's Street recently will have seen the wonderful work Martin Donnelly has done to bring *Glebe*, one of Winchelsea's oldest houses, back to life.



William Makepeace Thackeray, author of *Vanity Fair*, set his unfinished novel, *Denis Duval*, in the town and some scenes are set at *Glebe*. Curious to find out more, Martin found an edition of Charles Dickens' weekly magazine, *All The Year Round*.

The issue of 2nd April 1870, ends with an article celebrating Winchelsea and Rye as the setting for Thackeray's novel, which had been serialised in the



magazine. Dickens wrote many *All The Year Round* articles himself, but whether he wrote this piece, we don't know. (*Edwin Drood* was also serialised but not finished. Dickens died three months later, in June 1870.)

glance took in and adapted every spot to the texture of his tale. No spot more fit than weird, lawless Winchelsea for a plot such as he had conceived and laid, in times bristling with foreign wars and domestic feuds. Very many of the personages introduced into his story were living facts. The wicked Squires Weston, gentlemen, smugglers, and highwaymen actually resided in Winchelsea; the old glebe house still stands, as it did when Denis Duval used to drink tea with kind Dr. and Mrs. Barnard; a lovely and unfortunate French countess really lived, died, and was buried there, in the manner so graphically described; the ancient gates, which the little Denis pointed out to the French chevalier as he trotted by his side, are still standing; in fact, all Winchelsea is now much as it was at the time of the story, 1769, with this difference, that Thackeray has quickened it into life and motion.

---

---

**MR. DICKENS'S NEW WORK.**

Just Published, PRICE ONE SHILLING,  
PART ONE OF

**THE MYSTERY OF EDWIN DROOD.**

You can read the 2nd April issue of *All The Year Round* online. Scroll down to the end - pages 22 to 24 - for the article on Rye and Winchelsea - *Left Behind by the Sea*.  
[winchelsea.com/wp-content/uploads/2022/02/Dickens\\_Glebe.pdf](http://winchelsea.com/wp-content/uploads/2022/02/Dickens_Glebe.pdf)

---



*Ian Rowlands*



*Richard Cooper*



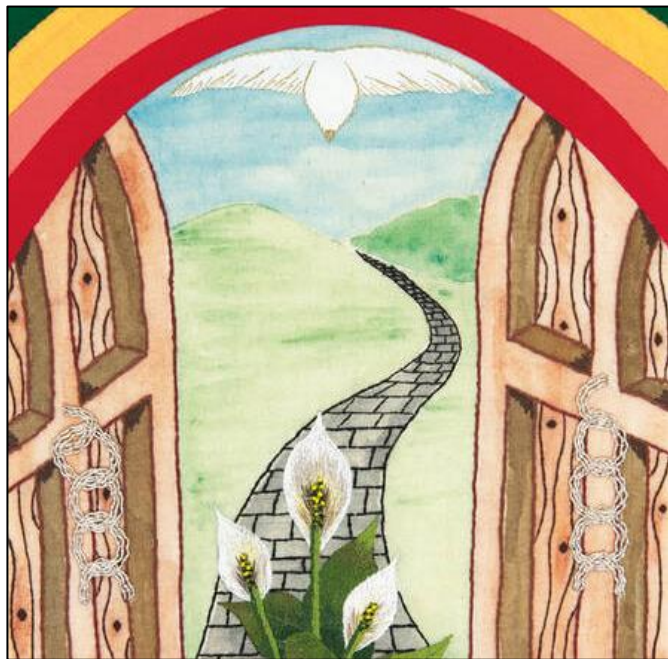
## **Jonathan to be priest at Pett**

The rector is taking on the additional responsibility of the parish of Pett and will be licensed by the archdeacon at a service of Evening Prayer on Tuesday 8th March at 4pm at St Mary and St Peter, Pett. The people of Pett will be pleased to welcome supporters from Winchelsea. Tea will be served afterwards.

It would be good to have some idea of numbers so if you are planning to come please let Jonathan know by email. There will also be a sheet at St Thomas's if you want to register.

[revdjonathan@btinternet.com](mailto:revdjonathan@btinternet.com)

---



## **World Day of Prayer**

This year's local act of worship will take place at Rye Baptist Church on Friday 4th March at 10.30am

This is a worldwide, ecumenical organisation and now encompasses men as well as the women to whom it used to be addressed. Monies raised as a result of the offerings given at the service are used to support projects throughout the countries worldwide who are members of the International Committee.

This year's service has been produced by the committees of England, Wales and Northern Ireland and is entitled 'I know the plans I have for you' based on Jeremiah Chapter 29 verses 1-14.

Everyone is welcome and we would be delighted to see you all.

*Revd Teresa Munro*



## **Retrospective of the works of Aziza Eid Janssens**

Monica and Sami Janssens offer you a warm invitation to an exhibition of oils, watercolours and sculptures selected from Aziza's extensive range. A limited number of works will be available for sale.

The exhibition will be held in the Lower Court Hall on Saturday 9th and Sunday 10th April - times to be confirmed

---





## **Proposed Art and Craft Group**

We are seeking to find out if there is a core of people who would like to join in regular, or ad hoc, Art, Craft and Design sessions in Winchelsea, and are having an informal first meeting to meet other interested residents and discuss possible topics.

The meeting will be in the Studio at Backfields Place, Rectory Lane at 10am on Wednesday 23rd March. Parking is available on the drive. All are welcome - coffee and cake will be provided. We look forward to seeing you there.

*Shirley, Louise, Sandra, Lyn, Linda*

---





## Caring for God's Acre

As you walk through the churchyard at the moment, you will not fail to notice the first of our bulbs, the white crocus, have appeared. There is also birdsfoot trefoil and salvia. The snowdrops near the ruins and many clumps of daffodils and narcissi are about to come out. Look more closely and you will notice pretty violets in shadier places.

Although the weather has been so bad recently, we are constantly monitoring the circular meadow areas for signs of activity, but perhaps it is still a little too cold for much germination to take place.

We have used seed from the Weald Meadows Partnership (Weald Native Origin Wildflower and Grass Seed (WNOS). Seed is 'wild harvested' from ancient meadows within the High Weald AONB and Low Weald natural areas. All donor meadows are surveyed, and biodiversity information is recorded.

The donor meadow owners receive payment for this valuable resource and the seed is then used for direct sowing projects and surface broadcast on suitable prepared recipient sites, such as St. Thomas's, usually in the autumn. A small snapshot of the seeds broadcast last year includes the following species and many more:

Bent, Common  
Bent, Velvet  
Crested Dog's-tail  
Fescue  
Meadow Fescue

Red Foxtail  
Meadow Hair-grass  
Tufted Meadow-grass  
Annual Meadow-grass  
Rough Oat Grass

Yellow Sweet Vernal-  
grass  
Sedge, Glaucous Sedge  
Hairy Wood-rush  
Vetchling, Grass  
(annual)  
Stitchwort  
Tare  
Trefoil, Lesser  
Vetch, Common  
Achillea  
Yellow Rattle  
Agrimony  
Bird's-foot-trefoil  
Cinquefoil,  
Cranes-bill,

Devil's bit Scabious  
Dyers Greenweed  
Goat's - beard  
Hawkbit, Rough  
Knapweed,  
Black Mouse-ear,  
Common Orchid,  
Common Spotted  
Orchid,  
Early-purple Orchids,  
Ox-eye Daisy  
Pepper Saxifrage  
Ragged Robin  
Selfheal  
and others!

For many people churchyards are the only green space to which they have easy access. *Caring for God's Acre* is a charity that works across the UK to support the people who research, care for and renovate churchyards.

Their work helps ensure continued community access to these precious green spaces. While churchyards are known for being repositories of local historical information, they are increasingly recognised as important havens for wildlife. *Caring for God's Acre's* work inspired the wildflower mini-meadow project in our own churchyard.

Next month Shirley Meyer and Paul Youten will be attending the *Caring for God's Acre* conference where they hope to learn more about what other groups are doing to ensure their churchyards continue to be peaceful and attractive places for quiet contemplation and spiritual connection.

Thank you to everyone for your continued interest in this project.

*Shirley Meyer*

---



## Winchelsea's Spring Gardens

The plan is for six gardens to open for the National Garden Scheme at Easter weekend - on Saturday 16th April from 1pm to 5.30.

The Friends of the Conquest Hospital will provide teas in the New Hall in aid of their funds. Garden admission money will all go to the nursing charities supported by the NGS.

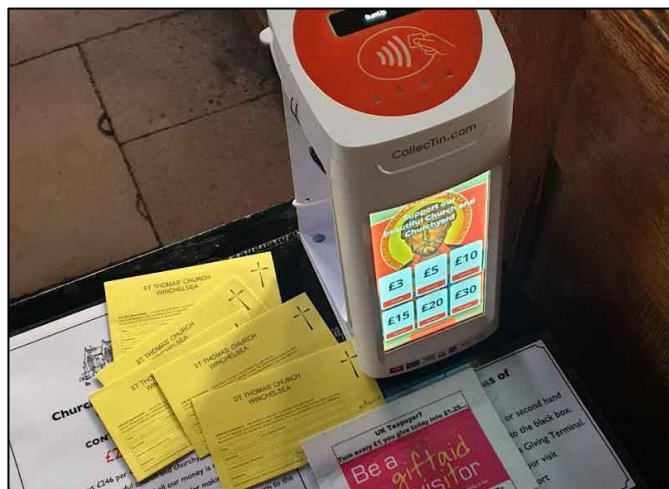
The gardens that will open are *King's Leap*, *Rye View*, *Periteau House*, *Cleveland Place*, *The Well House* and *Firebrand*. Admission to the group costs £5 for adults. Admission is free for children.

The summer NGS opening takes place on Saturday 18th June when ten gardens will open, with an opening for the Friends of the Hospital at Rye on the following afternoon.

[ngs.org.uk](http://ngs.org.uk)

---





## Seeking a Church Treasurer

Since last year we have done a lot of work on the system we use for our church accounts. We now have an Excel spreadsheet, which covers all our needs and is capable of generating regular reports and final accounts for our Annual Meeting. Transactions need entering on a regular basis but it is estimated that it should not need more than about 2 to 3 hours of work each month.

Although we have someone to manage this for the moment, they are not resident in the parish. We are looking for someone more local to take this on. Although the inputting of information is very basic there is scope for more creative strategic thinking with regard to future fund raising and managing the savings accounts.

Now that we have Wi-Fi and contactless giving there are more and more ways to raise funds and new ideas are welcome. If you would like to consider helping please get in touch with Jonathan to talk things over.

## Contactless and Easygiving

Now that we have installed Wi-Fi in the church we have installed a terminal for contactless giving, so that donations can be made at any time. We have also signed up for Easygiving, which is a way of earning

small donations from online retailers. It costs nothing to set up and once you have registered if you go through the Easygiving website when you order online a donation goes directly to the church from the retailer.

If enough people register I think it could raise a significant amount throughout the year. In the first week, three people added £5 to church funds. Contact Jonathan if you want more information or help setting this up. We already have about 15 supporters registered.

If you follow this link it is easy to set up  
[easyfundraising.org.uk/support-a-good-cause](http://easyfundraising.org.uk/support-a-good-cause)

## **Help with the Church Website and Digital Communication**

If you would like to help with our Church Website, which is relatively easy to manage please get in touch with Jonathan. Now that we have Wifi in the church we plan to develop links to podcasts and recorded information which can be streamed directly to people's mobile devices when they are visiting church. Any ideas and help would be most welcome.

---

## **Mothers' Prayers**

on Tuesday, 1st March at 10am in St Richards Church meeting room.

## **Fellowship Lunch**

on Friday 25th March in the Winchelsea Beach village hall 12.30 for 1pm. As this lunch takes place in Lent there will be soup instead of a main course. Booking essential. Contact Mary Parker  
[parkermary848@gmail.com](mailto:parkermary848@gmail.com)

---





## **Christmas Windows cheques presented**

We let you know in the February Article that the grand total of £1708 profit was raised from 2021 Christmas Windows and thanked you all for your generosity and enthusiasm. As we said we decided that our charities for 2021 would be St Thomas' Church and 'Snowflake'.

We have now made the donations which were gratefully received and the cheques were presented as shown. The Revd Jonathan Meyer received the cheque £500 for St Thomas' Church specifically for the planned lighting fund.



Andrew (the Chair of the Snowflake Trust) and his wife Lesley (the Project Manager for the Trust) received the donation of £700 on behalf of The Snowflake Trust.

We were introduced to the volunteers who were preparing the meal for that evening and Andrew and Lesley explained how they support, give freshly cooked hot meals and shelter to homeless people in Hastings.

The Trust is closely supported by the council and outreach teams but are equally dependant on help given by volunteers and donations. Donations enhance the quality of the centre, the resources and service which is offered.

Thank you to all of you who supported Winchelsea Christmas Windows 2021 we believe both donations were generous, gratefully received and worthy.

*Lyn, John, Ali, Chris, Shirley, Graham, Richard.*

---



## **Who's got Mary's dress?**

*Marion Lovell asks:* Has anyone any idea where the Mary dress for the Nativity play might be? It was last used two years ago and can't now be found. I really have searched thoroughly, with no success. It was specially made many years ago and is really clever, because it divides to let Mary ride the donkey comfortably. If you can help, please will you let me know. Thank you.



## **Icklesham Parish Council**

Monday 14th March: Planning Committee at Icklesham Memorial Hall at 6.15pm followed by Full Council.

Monday 28th: Planning Committee in the Court Hall, Winchelsea, at 6.15pm followed by a Staffing Committee.

### **Traffic Calming**

ESCC Highways have recommended that a new traffic survey be carried out, to confirm the current traffic levels. Open Spaces Committee have opted to purchase Black Cat data recorders to carry out the survey rather than pay around £700 to ESCC for a one-off survey.

This will need to be ratified by Council as the cost is more than the budget provision. The survey data is essential if we are to have any success in persuading ESCC to carry out traffic calming measures.

### **Winchelsea Beach Sewerage Issues**

Our MP has insisted on calling her own meeting. This will take place in the Community Hall on Friday 4th from 11.15am to 1pm at the Winchelsea Beach. The meeting is restricted to residents of Winchelsea Beach and the Councillors and Officers of Icklesham Parish Council. It will relate strictly to drainage issues in the Winchelsea Beach area.

For security reasons people will need to register to attend by 5pm Monday 28th February, providing their name and address. To register they should email [jane.howardsmith@parliament.uk](mailto:jane.howardsmith@parliament.uk) or write to Sally-Ann at Swallow House, Theaklen Drive, St Leonards on Sea, East Sussex TN38 9AZ.

## **Community Land Trust**

The Icklesham Parish Community Land Trust Ltd in association with their registered social landlord partner Hastoe Housing Association are pleased to announce that the above scheme is scheduled for completion in late summer 2022. August is the current aim.

The development consists of two 1-bedroomed flats, eight 2-bedroomed houses and two 3-bedroomed houses all for affordable rent; and two 2-bedroomed houses and one 3-bedroomed house for shared ownership.

The development will be available for occupation by qualifying persons, being persons having a close connection to Icklesham Parish by way of having lived in the parish for one of the relevant qualifying periods; or having close relatives that meet the qualifying criteria; or who have worked in the parish for the qualifying period.

Interested persons may check if they meet the qualifying criteria by contacting the Icklesham Parish Community Land Trust Ltd at their registered office, Winchmore Sea Road Winchelsea Beach TN36 4LA or by email to [geoff.foot4@gmail.com](mailto:geoff.foot4@gmail.com).

Interested persons will also need to register on Rother District Council's Housing Register. Details of how to do so will be sent to everyone who submits an expression of interest form.

*Cllr Peter Turner*

---



TUNE IN WINCHELSEA

# SING FOR FUN!

TUNE IN WINCHELSEA



£4  
INCLUDING  
TEA &  
BISCUITS

WINCHELSEA  
NEW HALL  
TUESDAYS 2PM

WEEKLY SINGING  
GROUP LED BY LOCAL  
TENOR GARY MARRIOT

All welcome. No experience necessary!



For details contact 07941 458628 or email  
[rroberts96@yahoo.co.uk](mailto:rroberts96@yahoo.co.uk)





## Winchelsea Residents Association

WRA is now posting on its website all the latest developments on issues that the committee are working. It is also emailing all members on a monthly basis but we thought it would be useful to give you headlines here too.

**Pavements** A report with photos was sent to East Sussex County Council by WRA in early January. By 24th January white dots appeared on the offending bricks outside the shop and on 10th February they had all been repaired. Any future concerns about the condition of our pavements please get in touch with us.

**Traffic Calming** Thank you to so many of you that wrote to the Parish Council with your views on the need for traffic calming in the town. Following the 10th January Parish Council meeting where the GTA traffic calming report was acknowledged, we have pressed IPC for their plans on how they will consult residents and what information will be available.

We have now agreed a joint meeting between Working Group and IPC representatives and the consultant. We hope the outcome will be agreement on which options will be part of an open consultation. This is planned for 7th March and we will let you know the outcome and next steps via the website.



**Public Toilets** WRA have had an initial meeting with Rother District Council who own the toilets and a report is due shortly. WRA will keep up momentum on this issue but there are complex issues on building condition, cost of insurance and maintenance and it is unlikely that the public toilets will be repaired and open again this year. We will keep you up to date on progress.

**Litter** At the end of January one of our members contacted the WRA committee concerned about the increased amount of litter in the town. She was planning to go out and pick up rubbish herself. One of the committee joined her and we collected two large bags of paper, cardboard, bottles and cans. Going forwards it was agreed that as a community we would litter pick once a month for an hour. Meet at 2pm on the 3rd Sunday of the month (Saturday 20th March next month) outside the New Inn. All welcome and a WRA committee member will always aim to join you.

Full details on the progress on these issues can be found on the WRA website [winchelseaRA.com](http://winchelseaRA.com)

We now have 170 members signed up to Winchelsea Residents Association and most of you have paid the £5 membership fee. For those of you have not yet paid please pay by BACS / Nat West Business Act no - 59667362 / sort code - 60-02-07. (£5 per member). Please include your name in the reference or by cash, using the drop box in the Little Shop, filling in the form with your £5 subscription to insure you are registered.

If you have not yet joined but would like to, please email us at [info@winchelseara.com](mailto:info@winchelseara.com).

On a final note please hold the date for the forthcoming WRA meeting which will be on Saturday 23rd April in the New Hall. The meeting will give us the opportunity of updating all members on all key issues, specifically Traffic Calming. More details to follow.

Thank you  
*WRA Committee.*

---



## **Winchelsea Wine Society**

### **Inaugural Wine Tasting - Friday 29th April**

After various meetings and Covid delays over the last year or so, we are delighted to announce that our first wine tasting event will take place in the New Hall between 6.30 and 8pm on Friday 29th April. The evening, which will be limited to a maximum of 40 people, will centre on a 'blind wine tasting' in which participants will be invited to become 'wine detectives' for the evening to taste and try to identify six different wines.

Simon Legge, who spent 30 years in the wine trade, will lead the tasting and give a brief introduction on wine tasting technique prior to the tasting itself, which we hope will be both good fun and informative.

Brian Leonard will also outline how we hope the Winchelsea Wine Society will develop in future and preview other events we will be holding later this year.

To reserve a place at the tasting, which will cost £10 per person, please contact Brian Leonard by e-mailing him at [brianleonard779@gmail.com](mailto:brianleonard779@gmail.com)



## Looking towards the Summer Fete

It may seem a little premature to be thinking about the Winchelsea Summer Fete, but outline plans are already in full swing for this, our main fundraising event of the year. The Dog Show plans are well under way, the Silver Band is in place, and bookings for stalls are already being taken.

You may wish to sell a product, promote an activity or group, or run a game that brings people to your stand, and raises much needed funds for your group. To book, or find out more details about having a stand at the fete, please do contact Laurie on [landsrutman@gmail.com](mailto:landsrutman@gmail.com)

The date of this year's Summer Fete is Saturday 13th August – please put this in your diary.

We are also looking for somebody to take on the organisation of the Refreshments for this event. If you are prepared to help in this capacity, or join our band of volunteers, then please contact [john.davidson47@outlook.com](mailto:john.davidson47@outlook.com) or phone 01797 223754.

For all other information concerning the New Hall, go to the website, [winchelsea.com/new-hall](http://winchelsea.com/new-hall)

Best wishes to you all, from  
the New Hall Management Committee.



## **The Hospital at Rye looks to the future**

As the Hospital at Rye reached its Centenary anniversary last November, it was a time to reflect not only on the past but also to look ahead to the future.

The Friends and Fundraising Committees have been busy planning a series of events that will lift the spirits of the local communities as we all come to terms with living with the pandemic. An overview of our programme of events can be viewed on our Events page at [ryehospital.org.uk/events](http://ryehospital.org.uk/events). Fuller details of each event will follow so please revisit!

Our main focus for 2022 is to reach out further into our local communities. We are currently looking for representatives from each village who are either already Friends or would like to sign up for membership.

As a village representative you will be contacted by Anne Bauling (a member of our Fundraising Committee) who will share details of upcoming events for you to distribute within your community through local churches, village shops, village noticeboards, etc.

These events would not necessarily be for fundraising as we would also like to offer a presentation at local venues to give the community a better understanding of what the Charity does and what we hope to achieve in the future.

We successfully raised enough funds to purchase a new mobile Echo machine last year and our Echo clinics began in early February. Our attention this year will be focussed on replacing mattresses and hospital beds in our Inpatient ward. Our priority will always be to ensure the comfort of our patients during the term of their stay. We have quite a target to fundraise towards so if you can help, do please get in touch.

The Friends of the Rye, Winchelsea and District Memorial Hospital have always played an important part in the life of the Hospital. The principal object of the Friends is to be the community facing arm of the Charity working closely with clinical staff and patients to support the needs of the Hospital; to raise funds in the community and to deliver resources which enhance the services provided by the Hospital. There is also an obligation to provide care within the community to patients, former patients and others in need of support.

If you would like to become a Friend, Village Representative or Volunteer or just want to find out more about your local community hospital, please visit [ryehospital.org.uk](http://ryehospital.org.uk) or contact Fran Clent, Company Secretary, at on 01797 223810 or [fundraising@ryehospital.org.uk](mailto:fundraising@ryehospital.org.uk)



## **Pett Level Rescue Boat**

The early winter months are usually quiet, but Pett Level is witnessing high levels of walkers and beach enthusiasts to enjoy the beautiful coastline and scenery.

Huge congratulations to three of our volunteers who embarked on Dry January to raise funds. Martin Geldart (crew), Nick Wise (trainee crew) and Dawn Turner (volunteer) raised over £1000 - so a big thank you to everyone who sponsored and supported them.

We are delighted to announce our Annual Open Day will take place on Sunday 28th August, 11am-3pm. This is our flagship event which provides much needed financial support and awareness of our presence in the community.

It is a relaxed, family occasion with live music, a barbecue and bar, stalls and a live sea demonstration. Plus this year we will also host a dog show and the grand prize draw will include superb electric bikes. Please add the date to your diary – and do let us know if you would like to support this year's event.



We recently welcomed new trainee crew to our team of volunteers and we now train both mid-week and Sundays to ensure we are always rescue ready. New volunteers are always welcome to support a range of activities – whether boat or beach crew, fundraising or admin. Do pop down on a Sunday morning if you would like to join us!

We are grateful to our neighbours at the C-Side Café for having a donation box on their counter and being such a positive supporter of our activities.

Our usual range of merchandise has always been popular and provides an enormously valuable contribution to our fundraising. In addition to the usual cards and calendars, we will soon have additional items available - these can be purchased from the boathouse on a Sunday morning or through the various events and activities we attend - look out for more details.

As the summer season approaches, we look forward to participating in various local events - if you would like us to be present at a community event, do get in touch to discuss what is possible.

With the days lengthening and spring ahead of us, beach safety awareness remains an important part of our work. Please be vigilant about weather warnings, seasonal tides and currents and stay mindful of the dangers at both the top and bottom of local cliffs, due to continued rockfalls all along the local coastline.

To keep in touch and to purchase our merchandise, please check out our website <https://plirb.com> or our social media: Twitter @PLIRBRescue; Facebook @PettLevelRescueBoat and Instagram @pettlevelindyrescueboat.

---



## **Pilates at the New Hall**

Mixed ability Pilates classes at Winchelsea New Hall

Mondays at 9.30am

Fridays at 9.30am

Please contact Hannah on 07936 151529  
or email [\*hannahpilateshastings@gmail.com\*](mailto:hannahpilateshastings@gmail.com)

---



## Rye Food Bank

The next Winchelsea collection date is Tuesday 15th March. If you would like to donate to the Rye Food Bank, please give Cam a ring, so that he can co-ordinate pick up from your doorstep.

*Donald Cameron-Clarke 01797 226414*

Monetary donations can be sent to Rye Foodbank at Barclays Bank - sort code 20-54-25 - account number 83501116; through the *Jempson Foundation*; or cheques to Rye Foodbank c/o 24 North Salts, Rye.

If you donate via the Jempson Foundation and are a taxpayer, gift aid can be applied, If you make a bank transfer, please do send a message (via *ryefoodbank@gmail.com*) so they know who it is from and can send a receipt, if required.

---

## **Jan Ziff 1953-2022**

Eldest daughter of Ann Rachlin, Jan died in Paris on 5th February after a year-long courageous fight with cancer. Although never a resident of Winchelsea, she loved the town.

Wherever she was travelling, be it China, Arizona or Cannes, visiting the UK was always coupled with frequent trips to Winchelsea. She loved the Church, Open Gardens, Summer Fete and manning the video camera during the Soirées. No matter where she was or what she was doing, she never failed to read this magazine and comment on its colourful content.

Born in Leeds, Jan was educated at Cheltenham Ladies College and UCL and Jerusalem, where she lived in the Old City. Walking through the narrow streets, friends from abroad were astounded by the happy greetings that rang out on all sides, as she meandered through the markets. Arabs, Druse, Jews, Christians - everyone knew and loved her and were her friends.

She spoke fluent Hebrew, Arabic, Spanish and French. Jan was a broadcasting journalist who started at the Voice of America, followed by BBC World Service Correspondent - West Bank/Gaza based in Jerusalem. Jan became the first State Department Correspondent for the BBC, traveling with Secretaries of State, Shultz, Baker, Eagleburger, and Christopher, broadcasting on their meetings with their international counterparts.

She interviewed world leaders including King Hussein of Jordan, developed contacts with US Senators and political commentators, and icons of the technology industry. She had an encyclopaedic wealth of knowledge on a myriad of subjects.

Jan wrote, produced and hosted the longest running technology show on CBS News (32 years). She was a prolific writer of children's books with several Amazon No 1 best-sellers. Few knew she was a superb craftswoman, making fine jewellery and beading, enchanting decoupage and knitting - all self-taught.



Her bubbly sense of humour, boundless energy and zest for life, will live on in the hearts of all who knew and loved her. Deeply mourned by her mother Ann Rachlin, husband Allan Davidson ,siblings Trisha and Max Ziff, and her beloved friend Iain Kerr.

---

## Mardi Gras



mardi gras  
last hurrah  
before ashes  
and austerity -  
a raucus party  
new-orleans style:  
hedonistic,  
hearty;

carnival  
*carne vale*  
in Latin:  
farewell  
to the flesh -  
but not yet...  
first there's  
mardi gras;

*Fat Tuesday*  
in French; we say  
Shrove or  
Pancake here,  
fetter Dienstag  
elsewhere;

between  
Christmas  
ad Easter  
this mini-feaster  
arrives and thrives:  
mardi gras  
last hurrah  
until shriven  
and forgiven  
we tread  
via dolorosa...

*Richard Ormrod*



## Winchelsea Church and Town Calendar

### March 2022

Tuesday 1st	Mothers' Prayers - 10am - St Richard's Meeting Room
Wednesday 2nd	<i>Ash Wednesday</i> <b>6pm: Eucharist with Imposition of Ashes at St Thomas'</b>
Friday 4th	World Day of Prayer - Rye Baptist Church - 10.30am
Saturday 5th	Church Market - 10.30am - 12
<b>Sunday 6th</b>	<b>9.30am: Parish Eucharist at Icklesham</b> <b>11am: Parish Eucharist at St Thomas'</b>
Tuesday 8th	Winchelsea Corporation AGM
Wednesday 9th	Second Wednesday Society - 2.30pm - New Hall
Saturday 12th	Garden Society Lecture - 2pm - New Hall
<b>Sunday 13th</b>	<b>9.30am: Parish Eucharist at Icklesham</b> <b>11am: Parish Eucharist at St Thomas'</b>
Friday 18th	Literary Society - 7pm for 7.30 - New Hall
Saturday 19th	FOAM AGM - 10.30am - Court Hall
<b>Sunday 20th</b>	<b>11am: Parish Eucharist at St Thomas'</b> Winchelsea Arts Concert - 4pm - St Thomas'
Friday 25th	Fellowship Lunch - WB Community Hall - 12.30 for 1pm
Saturday 26th	Was Iham walk - 2.15pm from Town Well
<b>Sunday 27th</b> <i>Mothering Sunday</i>	<i>Clocks go forward</i> <b>9.30am: Parish Eucharist at Icklesham</b> <b>11am: Parish Eucharist at St Thomas'</b>
Sat 2nd April	Church Market - 10.30am - 12
<b>Sun 3rd April</b>	<b>11am: Parish Eucharist at St Thomas'</b>

### Further ahead

Weds 6th April	Garden Society outing to Wisley
Sat 9th April	Garden Society Spring Show
Sat 9th, Sun 10th	Aziza Janssens Retrospective
Sat 16th April	NGS Winchelsea Spring Garden Opening
Sun 17th April	Easter
Mon 18th April	Mayoring Ceremony



Robbie Gooders

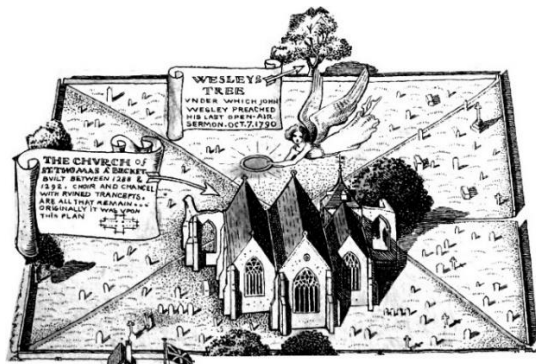
**Please send copy for the April Magazine to  
[ryeview@gmail.com](mailto:ryeview@gmail.com)  
before Thursday 31st March**

For Winchelsea Beach information go to  
[winchelseabeachcommunityassociation.co.uk](http://winchelseabeachcommunityassociation.co.uk)

For Winchelsea information go to  
[winchelsea.com](http://winchelsea.com)

For more information about the Church go to  
[winchelsea-icklesham-churches.org.uk](http://winchelsea-icklesham-churches.org.uk)

For weekly news from the local area go to  
[ryenews.org.uk](http://ryenews.org.uk)



## **Rector of Winchelsea and Icklesham**

The Revd Jonathan Meyer

The Rectory, St Thomas Street, Winchelsea TN36 4EB

01797 226254 [revdjonathan@btinternet.com](mailto:revdjonathan@btinternet.com)

The Rector's day off is Monday

## **Churchwardens**

Charlotte Beecroft

Burrin House, North St TN36 4HX

01797 223159 [ccmburrin@gmail.com](mailto:ccmburrin@gmail.com)

Celia King

Stargazer, Morlais Place TN36 4LG

01797 227858 [sake.king@hotmail.com](mailto:sake.king@hotmail.com)

## **PCC Secretary**

Angela Hill

Friars Halt, Friars Road TN36 4ED

01797 226325 [angelam.hill@btinternet.com](mailto:angelam.hill@btinternet.com)

## **Parish Treasurer**

*Vacancy*

## **Gift Aid**

David Jefferies

Wee Five, Sea Road TN36 4LH

01797 222904 [pamela.jefferies@sky.com](mailto:pamela.jefferies@sky.com)

## **Electoral Roll Officer**

Jeremy Naylor

White Cottage, Friars Road TN36 4ED

07985 734936 [jrnaylor@gmail.com](mailto:jrnaylor@gmail.com)

## **Organist**

David Birchenough

07840 595338 [daviddaorganist@icloud.com](mailto:daviddaorganist@icloud.com)

### **St Thomas' Choir**

Marion Lovell

7 Oast House Field, Icklesham TN36 4BP

01424 815247 [marion@abingworth.plus.com](mailto:marion@abingworth.plus.com)

### **St Thomas' Primary School**

*Headteacher* Carol Gardiner

Friars Road TN36 4ED

01797 226479

[office@st-thomas-winchelsea.e-sussex.sch.uk](mailto:office@st-thomas-winchelsea.e-sussex.sch.uk)

### **St Richard's Chapel Warden**

Mary Parker

Solstice, Sea Road TN36 4LH

01797 229798 [parkermary848@gmail.com](mailto:parkermary848@gmail.com)

### **St Richard's Secretary**

Pamela Jefferies 01797 222904

### **St Richard's Treasurer**

David Jefferies 01797 222904

### **Friends of Winchelsea Church**

*Chairman* Ben Chishick

Tower Cottage, Barrack Square TN36 4EA

01797 226653 [towercottage@btinternet.com](mailto:towercottage@btinternet.com)

*Treasurer* Stephen King

Stargazer, Morlais Place TN36 4LG

01797 227858 [stephenking408@btinternet.com](mailto:stephenking408@btinternet.com)

### **Parish Magazine**

*Editor* David Page

Rye View, The Strand TN36 4JY

01797 226524 [ryeview@gmail.com](mailto:ryeview@gmail.com)

