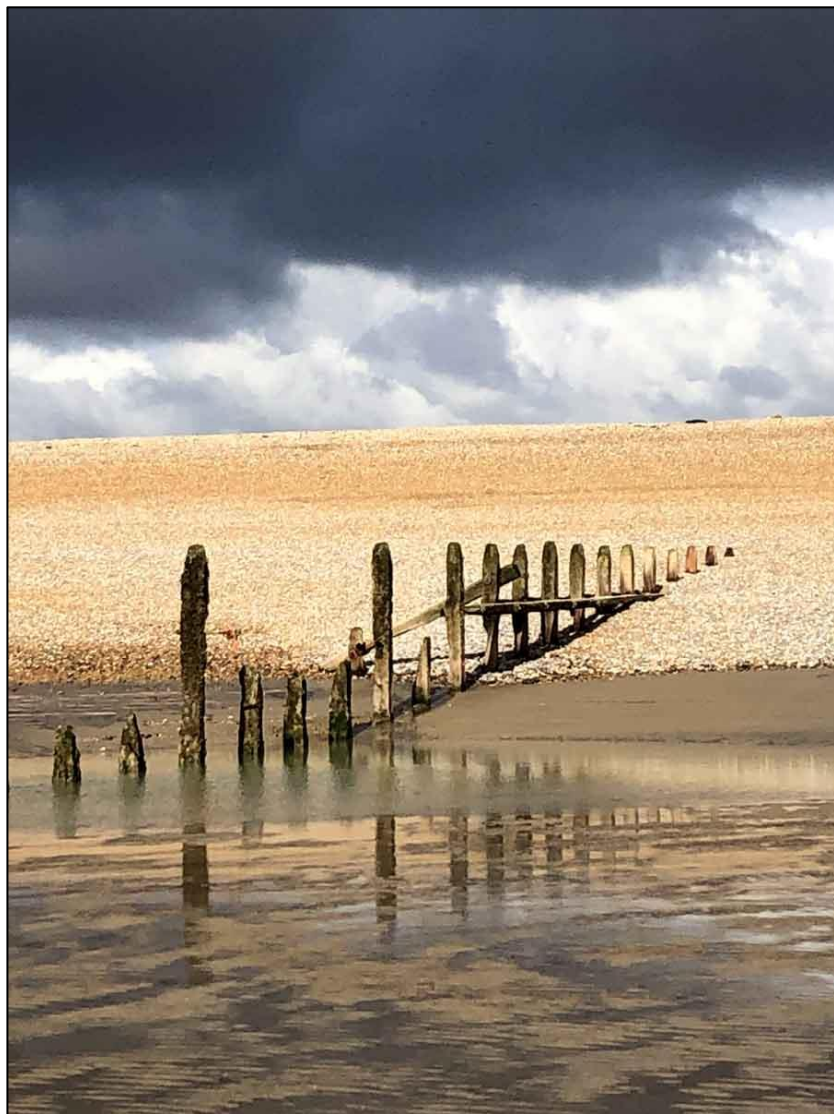
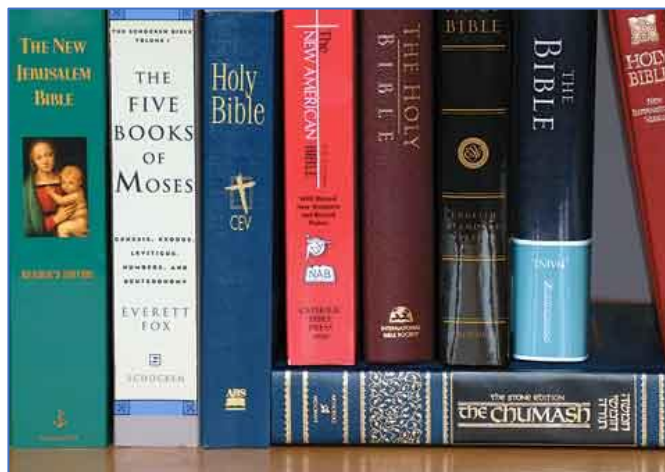


WINCHELSEA PARISH MAGAZINE

1st February 2022



Jane Archutowska



Reflections from the Rectory

Amongst my many faults is the extreme difficulty I have in avoiding the opportunity to get a cheap laugh. I find it hard not to make a facetious comment, which I think might elicit a giggle, even in the most inappropriate of circumstances. What hidden part of my psyche leads me to searching for a laugh I leave to the amateur (or perhaps professional) psychoanalysts amongst you. And perhaps it is not always a fault as sometimes laughter can be useful release.

One such temptation arose in church only a week or so ago. Those who were there will remember that the Old Testament reading from the prophet Isaiah unfolded in a way typical of the poetry of the prophet then suddenly in the last verse it remarked rather prosaically, “as a young man marries a young woman, so shall your builder marry you”.

Knowing that to comment on this during the service would perhaps interfere with the quality of our worship I managed to hold off mentioning it until the dismissal. However it was a near run thing that it didn't set off the first part of my sermon.

It turned out that quite a number of people had found this rather a strange translation and were wondering why they should marry their builder or indeed why he

should be inclined to marry them. It clearly struck a note with the congregation, as several commented and one of those leaving the church said they would considering marrying their builder because at least it might mean he got on with his work. I'm not sure that being married to the builder makes it any more likely that he will complete the building work but it is certainly a possibility.

I took the opportunity recently to have a look at some other translations. The Jerusalem Bible settles on "the one who built you", which avoids the opportunity for mirth. The majestic King James Bible is completely different and gives us, "so shall thy sons marry thee", the equally fine Revised Standard Version is similar giving no opportunity for laughs or even sitting up to wonder what the reading is about.

The question of whether "your sons" or "your builder" is more accurate depends on the complicated system of pointing invented by Jewish scholars called the Massoretes. The original Isaiah scroll is written without vowels, which is a characteristic of Hebrew so they invented a system of dots and squiggles to go under a character to indicate how it should be pronounced. This means that there is quite often ambiguity in Hebrew texts, in this case the word for "builder" or "son" depends on how it is pointed. I think in this case I prefer "sons".

Although some of this may seem frivolous and some obscure, there is a serious point about how we read scripture. We need to remember that translation is never an exact science, just as the way God reveals himself cannot be proscribed.

There is always a need to be open to ambiguities and varying interpretations, a need not to take things too literally but to pray for discernment and understanding. If we don't do so we can become closed minded and sometimes miss the Christ whose light is manifested throughout Epiphany and whose presence amazed Simeon in the Temple, which we remember at Candlemas.

Reading and reflecting on the Bible is an essential element in the way we encounter God and his message but it needs to be alongside prayer and reflection. Laughter at the right time helps too.

Rural Dean

Some people already know that on 1st January I became Rural Dean for the Rye Deanery which includes all the Church of England parishes from Northiam in the north to Fairlight in the south and from Westfield in the west to Rye and Camber in the east.



Ian Rowlands

The Rural Dean is responsible for the local chapter and Deanery Synod. He or she should be a support to churches where there is a vacancy, helping find cover and if necessary dealing with special services and matters relating to the churchyard. There is also a need to be a point of contact between the Bishop or Archdeacon and local clergy. This also brings with it need to support local clergy when there is a need. I am looking forward to getting to know the churches of this deanery, one of the smallest in the diocese and I feel honoured to be appointed and hope I can add something to the local church.

Contactless and Easygiving

Now that we have installed Wi-Fi in the church we will soon be installing a terminal for contactless giving, which will be fixed in church and donations can be made at any time.

We have also signed up for Easygiving, which is a way of earning small donations from online retailers. It costs nothing to set up and once you have registered if you go through the Easygiving website when you order online a donation goes directly to the church from the retailer.

If enough people register I think it could raise a significant amount throughout the year. In the first week, three people added £5 to church funds. Contact Jonathan if you want more information or help setting this up. We already have about 15 supporters registered.

If you follow this link it is easy to set up
<https://www.easyfundraising.org.uk/>

Church Lighting

At our recent PCC meeting we voted to proceed with commissioning Graham Large to provide us with a Lighting Concept for St Thomas'. This is the first step in what is likely to a long process but it will give us an idea of what the project might cost. Once we have a plan we will be able to get proper costings and if the PCC decide to go ahead we will need to seek permission from the diocese.

There will be an opportunity to question Graham and the PCC and we hope this can follow the APCM later this year. We will then need to consider how to raise the necessary funds and make grant applications.

Jonathan



Valentine Dance

Winchelsea Beach Community Association have a Valentine Dance on Saturday 12th February in the Village Hall from 7.30 until 10.30pm.

We will be dancing to *Something Else* who are giving their fee to St Michael's Hospice and The Roy Castle Lung Cancer Foundation. Fish and Chip Supper; Raffle; Bring your own drink and glasses.

Tickets cost £15.
Ring or text Jill Bruce 07732 723096



Next Steps for St Richard's

The structural engineer visited in mid-January and was able to confirm that the south gable end (the bit closest to the sea) had indeed moved outwards at high level. This will require an arrangement to tie it in to the rest of the building and thus prevent further movement.

As to paying for this, his view was that it might be related to storm damage about a year ago, in which case there may be a chance of some help from the insurers.

That said, he was of the view that the church was safe for use and we have, therefore, started to use it again and hope that we can settle into a pattern of using it for religious and secular meetings on an occasional basis, possibly two to three times a month.

He also looked at the tower and the north end of the church and saw no sign of any further movement since drainage was sorted out some four years ago, which is good news.

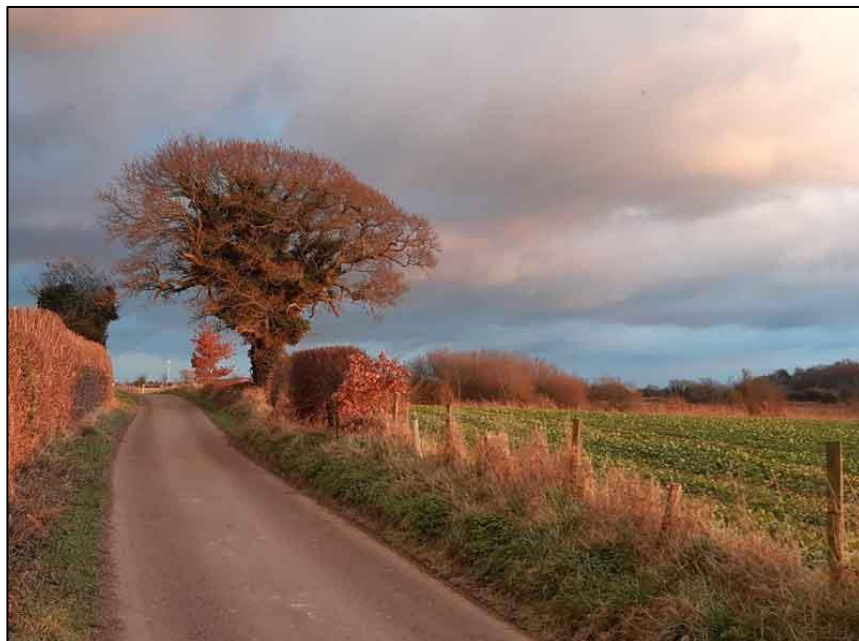
At the same time, this does not affect the policy of the PCC that the church should be closed. This policy is driven by the essential fact that the present very small congregation is simply unable to raise sufficient funds to cover the long term care and maintenance of the building. However, the PCC is committed to an

affordable solution that works for the local community and the rector remains pleased to receive views from residents on this, or any other matter concerning St Richard's by email to revdjonathan@btinternet.com or by letter to the Rectory.

Big Hymnbook Mystery

We have 'misaid' one of the pair of organ hymn books from St Thomas'. If anyone knows anything about Book One of the red Hymns Ancient And Modern, please could they let us know. It was used last on 2nd January. It is possible that it went with the books which are for sale. If someone bought it, they got a bargain! It is bigger than the choir music editions. It also has in it the name of our organist, as it is his own copy. We would be delighted to have it back. Thank you.

Marion Lovell



Float Lane *Birdie Johnson*



A New Mayor

Winchelsea Corporation has named David Merrifield as mayor for the coming year. Seen here becoming a freeman in 2016, he serves as a magistrate and has been active in the town, especially with the Millennium Artefacts Society and the Friends of Winchelsea Church. David and Sandra will take up the roles of mayor and mayoress following the ceremony on Easter Monday.

At least since the seventeenth century, the mayor making took place in the Court Hall. The Corporation decided in 2020 that the event should move to the much larger space of the Church so that everyone in the town who would like to can attend. 2022 will be the first opportunity to put this decision into effect.



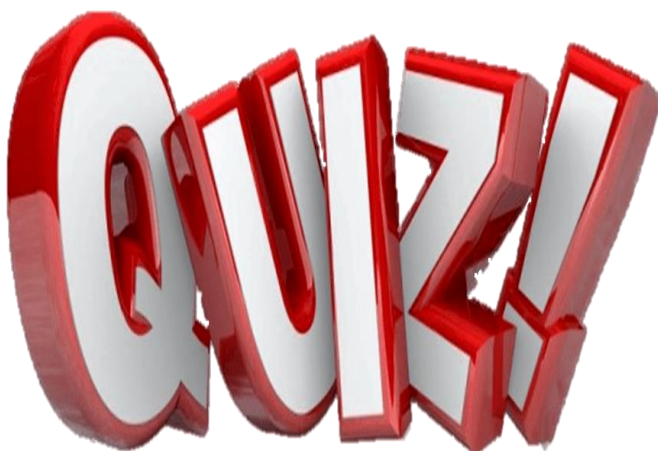
Queen's Dues donations

Winchelsea Corporation has no revenue raising powers, so the Queen's Dues represent a voluntary contribution towards the upkeep of the ancient monuments of the town and are applied to a total of 52 properties. Queen Elizabeth I granted the original revenue in the 1570s but sadly didn't think to inflation-proof it.

Our thanks to everyone who made a donation in 2021 over and above the historical sum. Gift Aid has now been added and the Corporation is grateful to those who used this option. The total raised is a little over £650, making it the best ever collection year.

The Corporation will put this money towards its charitable objects. These particularly concern, in concert with the Friends of the Ancient Monuments, caring for the Court Hall, the Museum and the three Town Gates. This year, the Platinum Jubilee initiatives may also have a bearing.

Thank you all very much indeed.
David Page, Mayor



FOAM Quiz on 19th February

Take-up for the famous Friends of the Ancient Monuments quiz has been excellent and all available tables have now been booked.

The quiz will be held in the New Hall on Saturday 19th February at 6.30 pm for a prompt 7pm start.

The cost will be £15, due on the night - contactless payment is welcome. A ploughman's supper - ham & cheese - is included in the price and will be served at half time.

There will be a pay bar and a raffle and all proceeds will go to FOAM for the maintenance of Winchelsea's medieval monuments and the Museum.

Individuals who have booked but are not yet part of a team will be found a place on a team on the night.

Contact Stuart Raine if you have any queries
stuartraine@btinternet.com
01797 222772



Second Wednesday

Small Screens and Magnificent Miniatures

And so we're into February, which for me, always feels like the real start of the year. January is the strange limbo between two different years. The first few days are still a bit Christmassy, until Twelfth Night. We eat mince pies and Christmas cake or drink Port that was bought for the holiday season and never finished before the turn of the year. In the Russian Orthodox Church, Christmas is yet to be celebrated as they still follow the Julian Calendar and look forward to 7th January.

For a few weeks we straddle the past and the future uncomfortably, filled with hopes and resolutions that haven't yet imbedded themselves into our routine. We have to retrain ourselves to write 22 everywhere instead of 21. Even the weather hasn't decided what to do; should it be unseasonably warm or endlessly wet; sappingly dull or crisp and sunny.

For Second Wednesday Society, January brought us Dr Gillian White. Miniatures, from the Latin, 'miniare', to illuminate a manuscript, not from 'minutus', meaning small. So the fact that we were back on our own small screens was entirely due to caution and not a means to better understand the intimacy of the art.

On a sparkling day, she shared the extraordinary beauty and history of these unique jewels with us. Nicholas Hilliard, a goldsmith initially, created these intricate, exquisite and personal works of art, during the reign of Elizabeth I, who commissioned and wore them herself. Astonishingly, the largest follow the dimensions of a playing card and many are the same size as an Instagram post, often serving a similar purpose, making the Monarch, in this and so many other fashions, the influencer of her day.

The third Monday in January, the 17th this year, was Martin Luther King Day. It's a Federal Holiday in the United States and was marked here, by the band of the Grenadier Guards playing Happy Birthday by Stevie Wonder, outside Buckingham Palace. "Life's piano can only produce melodies of brotherhood when it is recognised that the black keys are as basic, necessary and beautiful as the white keys" said Dr King.

Over five decades later, the power and truth of his work, means that we all understand that the quotation has nothing to do with Peter Willson's December talk and everything to do with what Bill Doherty, our February speaker, will explain to us this month. And that in itself, has to be slow but sure progress.

'A Man and a Brother', part of the slogan used by the Abolitionists, was popularised when Josiah Wedgwood created a cameo depicting their emblem of the supplicant slave, with its heart-breaking question.

He gave these medallions away free to promote the cause, even sending some to Benjamin Franklin for distribution in Pennsylvania, the first of the colonies to pass an abolition law. Pennsylvania, named of course after William Penn, whose family owned Wickham Manor, Winchelsea.

Bill will talk to us about the economic and political factors that created the transatlantic slave trade and examine the balance of forces in the struggle for abolition. We will be back in the New Hall for Bill's talk.

Natasha Robinson 2ndWeds@gmail.com



2022 Programme

This is the Second Wednesday programme through to the autumn. Meetings in the New Hall.

9th February

"A Man and a Brother: the transatlantic slave trade"

Bill Doherty

9th March

"A Schoolgirl's War: the paintings of Helen Keen"

Mary Smith

13th April

"Statues" Andrew Ashton

11th May

"Strictly Scottish Country Dancing"

Maddy Coelho and Paul Youlten

8th June

"Sussex Literary Landscapes" Geoffrey Mead

13th July

"Crossing the Great Divide: 10 days with the wildlife of Costa Rica" Michael Howard

14th September

"Careering through the Diplomatic Service" Richard Thomas

12th October

"Camping De-Lux: Billy Butlin's holiday villages by the sea" Dr Kathryn Ferry



Garden Society

Although we are unable to safely hold our scheduled AGM we can now offer several alternatives for everyone to renew their membership - £5 each for the year.

Judith Payne welcomes anyone who is passing her house - Evens, Rectory Lane - to call, pay their subscription and collect their show schedule - maybe giving her a call first - 01797 224861.

Judith will be at the next Church Market from 10.30 am on the 5th February again ready to collect subscriptions and also Winchelsea Beach Fellowship Lunch on Friday the 28th January.

We hope that by offering the above options everyone will be able to renew their membership and of course new members are always very welcome.

The postponed lecture by Steve Edney has been rescheduled for 2pm on Saturday 12th March in the New Hall.

Looking forward to a good gardening year -
Winchelsea Garden Society Committee.



WINCHELSEA RESIDENTS' ASSOCIATION



Residents' Association online

The promised Winchelsea Residents' Association website is now up and running.

On the site you will find details of the Association's objectives and a list of committee members. There's also information about subscriptions and how to join.

There's an 'Issues' section with something about each of the topics currently under discussion - traffic through the town and on the A259, pavements, and public toilets.

www.winchelseaRA.com



Natasha Robinson



Ian Rowlands

Icklesham Parish Council

Meetings in February

Monday 14th. Planning Committee in the Court Hall, Winchelsea at 6.15, followed by Allotment Committee meeting.

Monday 28th. Planning Committee in the Court Hall, Winchelsea, at 6.15 followed Open Spaces Committee.

Note. The Allotment Committee and Open Spaces Committee may change places in the calendar.

Traffic Calming

The Consultant's report was on the January Council agenda, but discussion was limited as some of the consultations had not been received in time for the meeting. Council was assured that the PWBL loan offer does not have to be drawn down until early May.

Budget 2022-23

The budget for the next financial year was agreed at the January meeting and the precept fixed for the year.

The precept has been set at £157,588.00. This is an increase of £44,813.00 on last year's precept.

Winchelsea Beach Sewerage Issues

Council was informed the MP wanted to hold the meeting on a Friday evening, but this is not considered the optimum day and time for a public meeting.

Council prefers to hold the meeting on a Saturday morning, when more residents are likely to attend.

The Clerk is to respond to the MP.

Cllr Peter Turner

ickleshampc@hotmail.co.uk

ickleshampc.org



Guy Fawkes AGM

The Winchelsea Guy Fawkes Society AGM is to be held on Saturday 12th February at 3pm in the New Hall. The future of the Society will be discussed - do come and have your say.



Literary Society

On Friday 18th February the speaker will be Aline Templeton, grande-dame of crime writing, followed on 18th March by Alex Preston, journalist and author of a soon-to-be-published historical novel 'Winchelsea'

The intention is to resume in-person meetings in the Lower Court Hall, all being well. For confirmation, email winlitsoc@gmail.com

or check the Society's blog
winlitsoc.blogspot.com

Snakes I have known

Eileen Johnston remembers events from her time as a young nurse in the Far East.

Occasionally, we would holiday by the sea in Hua Hin in southern Thailand, which was that that time undeveloped country.

I and the two girls, Lee and Jane, took the train from Bangkok, travelling on a railway line built by British prisoners of war in 1942. The journey took several hours and arrived at Hua Hin station late, after dark.

The station porter called a bicycle samlor to take us onward to the company bungalow. All three of us squeezed into the rear seat, plus the luggage. Cycling into the darkness held no fear, only hoping that we would arrive without accident. Tiger tracks had been seen in the area but we did not think about that.

The bungalow, built on stilts and actually situated on the beach was built with open rafters between the roof and the wall to aid ventilation in hot weather. In the gap above the toilet lived a large snake - a python perhaps. Before going in it was important to bang on the door and give the snake time to retreat.

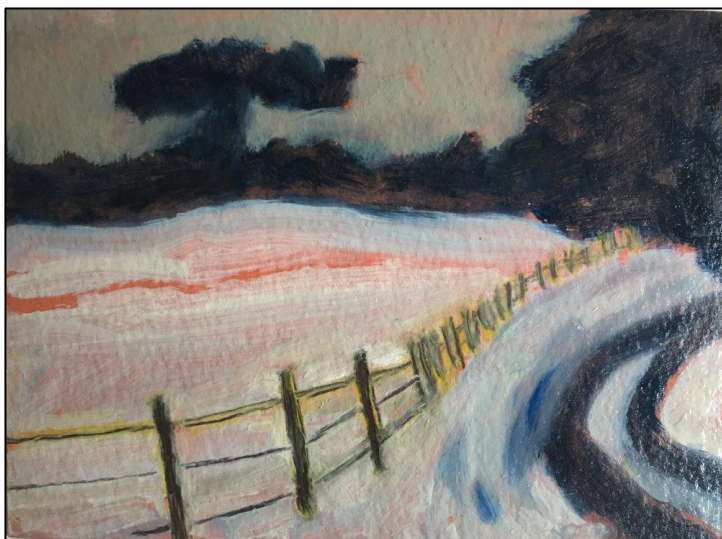
Another snake lived under the steps down to the beach, so we would make a noise to let it know we were coming. They didn't want to meet us any more than we wanted to meet them.

The sea snakes were troublesome, though. Eighteen inches long, with yellow and black stripes, they were washed up on the tide to lie in the warm sand. These snakes were lethal.

I cannot now imagine how we spent our holiday like this!



'The Way Home - Winchelsea'



'Bend in the Road - Winchelsea'

Two paintings by Winchelsea-based artist, Lucinda Oestreicher - we hope not presaging a serious cold snap. You can see more of her work online at <http://oestreicher.co.uk/>



Piano Festival seeks hosts

The 16th Hastings International Piano Concerto Competition starts on Thursday 24th February with the finals on Friday 4th and Saturday 5th March. Between 40 and 50 contestants will be coming to compete for the coveted title of winner of the Hastings International Piano Concerto Competition (HIPCC)

The aim is to give young, talented pianists the chance to step into the world of the virtuoso pianists and the Competition organisers are looking for host families who could offer B&B. You do not need to have a piano.

Generally, during the day, the competitors are away practising in preparation for their time on stage. Mostly these pianists are attached to music conservatoires and if they do not succeed in clearing any stage of the competition, they generally leave to be back with their maestros. That being said, some do stay till the end if they had purchase a fixed arrival & departure ticket.

The first week will be in Rye and the second stage starting on Sunday 27th February, in The White Rock Hotel. We have a full team of volunteers and also a team of drivers.

To find out more, go to hastingsinternationalpiano.org and for further information about hosting, contact Christina Gillett christina.gillett@exifnet.com



Ian Rowlands

Winchelsea New Hall

Work has now begun on the first of our planned projects for 2022. The cloakroom to the left of the lobby, as you enter the building, is being converted to include a purpose-built accessible toilet and cloakroom area. The project will also include changes to the entrance lobby to improve access for those with impaired mobility. The hall will remain open throughout the work.

This will be the first of our projects this year, to improve facilities within the hall. We are presently overhauling our stage lighting system, which we hope will be available for hire a little later this year. Also in the pipeline this year is the re-design and upgrading of the ladies and gents toilet areas. This is all part of a much wider programme to enhance and further develop all areas of the New Hall for use by the whole community.

If you would like to become a Friend or make a donation to support the running and development of the hall, you can find information on the website, winchelsea.com/new-hall or alternatively contact our treasurer Rosemarie Roberts on 07941 458628.

The New Hall Management Committee



Alice Kenyon

Christmas Windows Results

Whether it was with friends or family what a treat it was to walk round Winchelsea over Christmas and see the lights and lovely decorated windows that were being celebrated in the town, creating a perfect way to end each day over this festive period.

Alongside the event, funds were raised for 'Snowflake' (a charity in Hastings providing night shelter and food for homeless people) and for St. Thomas's Church towards their new lighting project, the fund for which is now underway. We shall be giving £700 to 'Snowflake' and £500 to St. Thomas on behalf of Winchelsea Town.

Funds raised were again beyond our expectations and none of it would have happened without the kind and generous contributions made by local sponsors, the crafts which sold at the Fair in November and at The Farm Kitchen, as well as the generous donations made through the three donation tins in the town.

Thank you to all who helped to make the town a shared celebratory Christmas. The variety of styles and themes proved to be particularly admired by everyone.

We hope to see you at our A.G.M. in October where we welcome your ideas for Christmas Windows 2022.
Winchelsea Christmas Windows Group



Winchelsea Arts

The next concert in the Winchelsea Arts series brings together the talented young musicians of King's College School, Wimbledon. They will be performing a wide range of music for choirs, solo instruments and small vocal ensemble.

The concert takes place at St Thomas' on Sunday 20th March at 4pm and tickets are available on the Arts website.

winchelsea-arts.org.uk



Winchelsea Wine Society

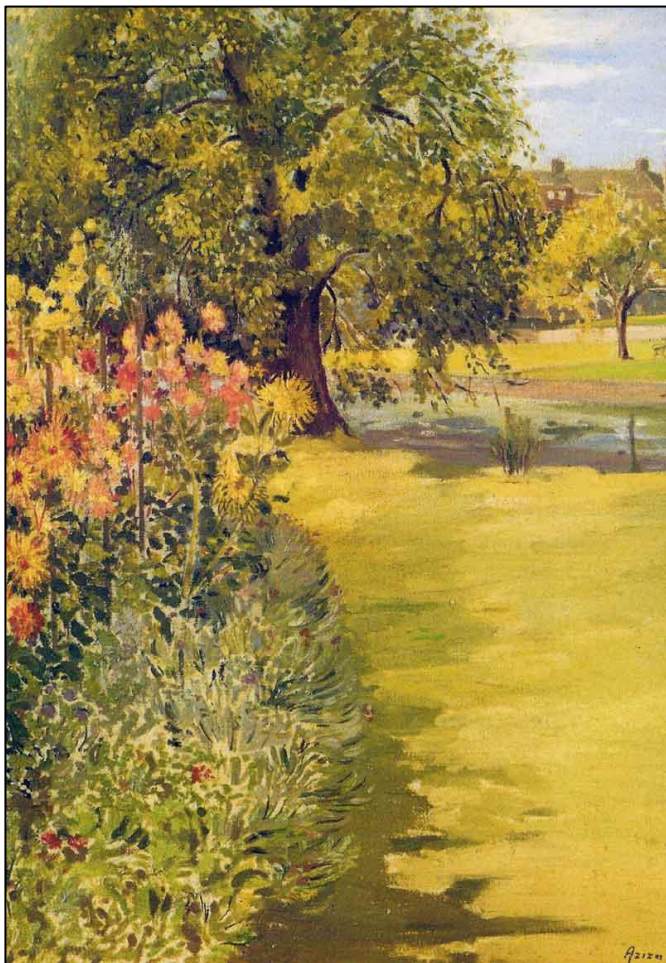
Inaugural Wine Tasting - Friday 29th April

After various meetings and Covid delays over the last year or so, we are delighted to announce that our first wine tasting event will take place in the New Hall between 6.30 and 8pm on Friday 29th April. The evening, which will be limited to a maximum of 40 people, will centre on a 'blind wine tasting' in which participants will be invited to become 'wine detectives' for the evening to taste and try to identify six different wines.

Simon Legge, who spent 30 years in the wine trade, will lead the tasting and give a brief introduction on wine tasting technique prior to the tasting itself, which we hope will be both good fun and informative.

Brian Leonard will also outline how we hope the Winchelsea Wine Society will develop in future and preview other events we will be holding later this year.

To reserve a place at the tasting, which will cost £10 per person, please contact Brian Leonard by e-mailing him at brianleonard779@gmail.com



Aziza Janssens

Friends gathered at her home in North Street at the end of January to celebrate the life of Aziza who died on 30th December at the age of 87. Though not out and about in recent years, she was a lively presence in the town in earlier days, and an artist of note, as this picture demonstrates. She held regular exhibitions of her work and gave art classes locally. Our sympathies go to Monica and her brother at this time.



Tony Jasper

Tony died on 19th January. He had been undergoing treatment for cancer for some time. His funeral will be held at St Thomas' on Tuesday 1st February at 11am.

Seen here ready to greet visitors at the 2019 garden opening, Tony enthusiastically supported Lis in the creation of the remarkable garden at *The Armoury*. He was the creator of the quirky ornaments that are such a feature of the garden, and notorious for continuing to climb ladders to trim yew hedges at an age when most of us have long given that up.

The town has special reason to be grateful to Tony for buying and, with Lis, sustaining the *Little Shop* in the period before it became a community enterprise and then passed into its current ownership. Without that initiative, Winchelsea might not now have a shop at all.

Lis died unexpectedly in January 2021. Our condolences go to their daughters and granddaughter.



Rye Food Bank

The next Winchelsea collection date is Tuesday 15th February. If you would like to donate to the Rye Food Bank, please give Cam a ring, so that he can co-ordinate pick up from your doorstep.

Donald Cameron-Clarke 01797 226414

Monetary donations can be sent to Rye Foodbank at Barclays Bank - sort code 20-54-25 - account number 83501116; through the Jempson Foundation; or cheques to Rye Foodbank c/o 24 North Salts, Rye.

If you donate via the Jempson Foundation and are a taxpayer, gift aid can be applied, If you make a bank transfer, please do send a message (via ryefoodbank@gmail.com) so they know who it is from and can send a receipt, if required.



Making a donation for the magazine

If you've valued the magazine this past year and would be willing to mark your appreciation with a donation to the church we would be very grateful. There is no longer an annual subscription.

You can either donate online at
justgiving.com/fundraising/winchelseaapcc

or you can put cash or a cheque in the black box at the back of 'St Thomas'. If you mark your donation 'Parish Mag' that will be a great help to the treasurer. If you use a cheque, please make it payable to 'PCC Winchelsea'. Thank you very much.

The digital magazine is available free to anyone who would like to receive it. It currently goes out to 280 email addresses and is also posted on winchelsea.com.

15 people who can't get it digitally receive a monthly A4 printed digest of the main items.

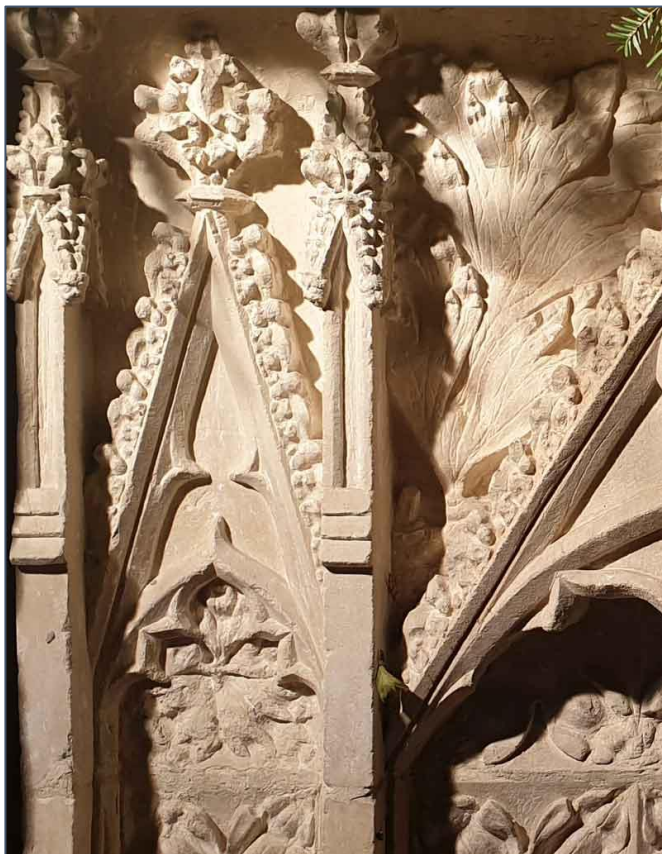
Winchelsea Church and Town Calendar

February 2022

| | |
|----------------------|---|
| Tuesday 1st | Mothers' Prayers - 10am - St Richard's Funeral of Tony Jasper - 11am - St Thomas' |
| Saturday 5th | Church Market - 10.30am - 12 |
| Sunday 6th | 9.30am: Parish Eucharist at Icklesham 11am: Parish Eucharist at St Thomas' |
| Wednesday 9th | Second Wednesday Society - 2.30pm - New Hall |
| Saturday 12th | Guy Fawkes Society AGM - 3pm - New Hall Valentine Dance - 7.30pm - WB Community Hall |
| Sunday 13th | 9.30am: Parish Eucharist at Icklesham 11am: Parish Eucharist at St Thomas' |
| Friday 18th | Literary Society - 7pm for 7.30 |
| Saturday 19th | FOAM Quiz - 6.30 for 7pm - New Hall |
| Sunday 20th | 9.30am: Parish Eucharist at Icklesham 11am: Parish Eucharist at St Thomas' |
| Friday 25th | Fellowship Lunch - WB Community Hall - 12.30 for 1pm |
| Saturday 26th | Magazine copy deadline |
| Sunday 27th | 9.30am: Parish Eucharist at Icklesham 11am: Parish Eucharist at St Thomas' |
| Friday 25th | Fellowship Lunch - WB Community Hall - 12.30 for 1pm |
| Weds 2nd March | Ash Wednesday |
| Sat 5th March | Church Market - 10.30am - 12 |
| Sun 6th March | 9.30am: Parish Eucharist at Icklesham 11am: Parish Eucharist at St Thomas' |

Further ahead

| | |
|----------------|--|
| Sat 12th March | Garden Society Lecture - 2pm - New Hall |
| Sat 19th March | FOAM AGM - 10.30am - Court Hall |
| Sun 20th March | Winchelsea Arts Concert - 4pm - St Thomas' |



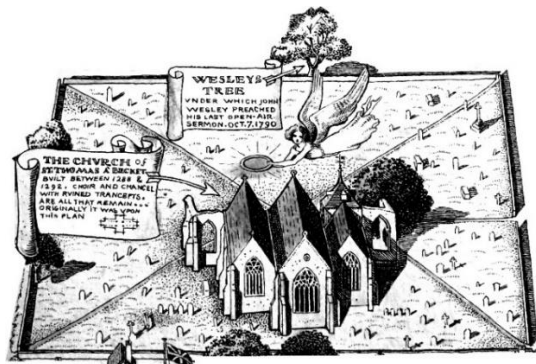
**Please send copy for the March Magazine to
ryeview@gmail.com
before Saturday 26th February**

For Winchelsea Beach information go to
winchelseabeachcommunityassociation.co.uk

For Winchelsea information go to
winchelsea.com

For more information about the Church go to
winchelsea-icklesham-churches.org.uk

For weekly news from the local area go to
ryenews.org.uk



Rector of Winchelsea and Icklesham

The Revd Jonathan Meyer

The Rectory, St Thomas Street, Winchelsea TN36 4EB

01797 226254 revdjonathan@btinternet.com

The Rector's day off is Monday

Churchwardens

Charlotte Beecroft

Burrin House, North St TN36 4HX

01797 223159 ccmburrin@gmail.com

Celia King

Stargazer, Morlais Place TN36 4LG

01797 227858 sake.king@hotmail.com

PCC Secretary

Angela Hill

Friars Halt, Friars Road TN36 4ED

01797 226325 angelam.hill@btinternet.com

Parish Treasurer

Vacancy

Gift Aid

David Jefferies

Wee Five, Sea Road TN36 4LH

01797 222904 pamela.jefferies@sky.com

Electoral Roll Officer

Jeremy Naylor

White Cottage, Friars Road TN36 4ED

07985 734936 jrnaylor@gmail.com

Organist

David Birchenough

07840 595338 daviddaorganist@icloud.com

St Thomas' Choir

Marion Lovell

7 Oast House Field, Icklesham TN36 4BP

01424 815247 marion@abingworth.plus.com

St Thomas' Primary School

Headteacher Carol Gardiner

Friars Road TN36 4ED

01797 226479

office@st-thomas-winchelsea.e-sussex.sch.uk

St Richard's Chapel Warden

Mary Parker

Solstice, Sea Road TN36 4LH

01797 229798 maryalan.parker@btinternet.com

St Richard's Secretary

Pamela Jefferies 01797 222904

St Richard's Treasurer

David Jefferies 01797 222904

Friends of Winchelsea Church

Chairman Ben Chishick

Tower Cottage, Barrack Square TN36 4EA

01797 226653 towercottage@btinternet.com

Treasurer Stephen King

Stargazer, Morlais Place TN36 4LG

01797 227858 stephenking408@btinternet.com

Parish Magazine

Editor David Page

Rye View, The Strand TN36 4JY

01797 226524 ryeview@gmail.com

