

WINCHELSEA PARISH MAGAZINE

1st October 2021





Crop circles

During September the turf was finally cut from the top of the designated circles. It was a hot day and Andy Goodsell worked hard with his turf cutter and rotavator, helping Paul Youten and Jim Kay with the hard labour. Having injured my leg in Cornwall I was fortunate enough to be exempt from duties!

The soil was raked and prepared for the sowing of wildflower and grass seed mixes. Jim has ordered some interesting flower mixes with each circle aiming to have a colour theme.

For identity purposes they have become affectionately known as Tom, Dick and Harriet with the little area against the ruin known as Margot. One will be mainly blue, one yellow and one white. Some native bulbs will also be planted.

Throughout the whole process these areas in question will be delineated using attractive rusted swag crooks.

The photograph shows the steel crooks as they were delivered and they will rust once in situ and are subjected to rain. So, look out for them undergoing this natural process. Natural sisal rope will join the crooks together.



Happening in October: sowing seeds and bulbs, placing of crooks, hanging of rope, placing of information boards.

Shirley Meyer
(on behalf of the Churchyard sub-committee)

Reflections from the Rectory

So much of the regular patterns of church life have been disrupted over the past 18 months. But we are slowly beginning to return to more familiar ways of doing things. We have begun to sing in church, there is not a restriction on numbers at weddings and funerals, masks have become optional and concerts have resumed.

I hope and pray that there will not be further disruptions in the autumn but I'm hopeful that if we are careful and realistic they can be avoided. Above all it will be important to respect others. However we wish to limit the restriction of our own behaviour we should ensure that it will not have the potential to impact on those who are less confident or have particular needs or anxieties.

Towards the end of August another less well-known annual gathering resumed. The Archdeacon's visitation for our deanery took place in St Mary's Church, Battle. It is not fully appreciated that the Archdeacon has a legal role within the diocese and the summer visitation is the formal swearing-in of churchwardens.

Last year this was done locally by special permission of the Bishop. However it was good to gather in a full church with those who have been elected to the office of churchwarden within this deanery, to sing, to pray and hear the Archdeacon's charge. It is also an opportunity to thank those who put themselves forward for this office and I am very grateful for the help and support of our churchwardens, Charlotte Beecroft and Celia King.

I cannot remember every detail of what he said but two things in particular have remained with me. He referred to the need to be careful about wearing masks where appropriate and as I have said above all to show respect for others.

But he did add that we need to remember the importance of our faces. Not only are they particular and unique to each one of us, they reflect something of who we are and it is by looking upon another face that we should recall that we are created in God's image.



By his ministry on earth Jesus showed us the face of God and as we encounter one another something God's love is revealed. We should not forget that in Genesis God tells us he has created everything on the “face of the earth” – it is through the creative energy of God that the glories of the earth face him – faces with nowhere or no one to gaze upon are meaningless.

The other point that he made was how important it is to meet in person. Worship during the period of strict lockdown was difficult. It is Jesus himself that tells us when two or three are gathered together in his name he is present in their midst. Although we have learnt some good things by using zoom and other methods of meeting there is no substitute for meeting in person. There is no substitute for gathering together whether as a friends or as a congregation, there is much about our communication that is unseen and expressed without language.

We only need to think of the support we can give someone who is ill by simply being with them – the mystery of presence brings with it a deeper sharing of God's presence. As we move into autumn and winter with some anxiety and caution, I pray that we will continue to share the company of others, in church or elsewhere and that as masks are removed we enjoy the mystery of one another's faces just as Jesus brought his divinity and mystery to us in human form. *Jonathan*

Sunday 31st October at 11am

Benefice Eucharist and Confirmation

Celebrated by the Rt Revd Will Hazelwood
Bishop of Lewes

Our 5th Sunday Benefice service will be celebrated in Winchelsea by the new Bishop of Lewes, although he has been in post for over a year now, many of you will not have met him yet due to the restrictions imposed on us. We will be celebrating All Saints on that day and it will include a confirmation of a young couple from Icklesham.



Confirmation

If you have been thinking of being confirmed or would like to discuss it, do contact the Rector Jonathan Meyer.
revdjonathan@btinternet.com 01797 226254

Sunday 7th November at 4pm at St Thomas'

Service for the Departed

All Souls Day falls on 2nd November and in the past we have had a service for the departed, to which all those who have been bereaved in the Benefice are invited. Of course anyone is welcome and as this year there is no Lights of Love Service planned it will be the only opportunity to remember those we love, whom we have lost. The service usually lasts about 35-40 minutes and there is an opportunity to light a candle. Tea will be offered afterwards but anyone who wants to leave quietly is free to do so.

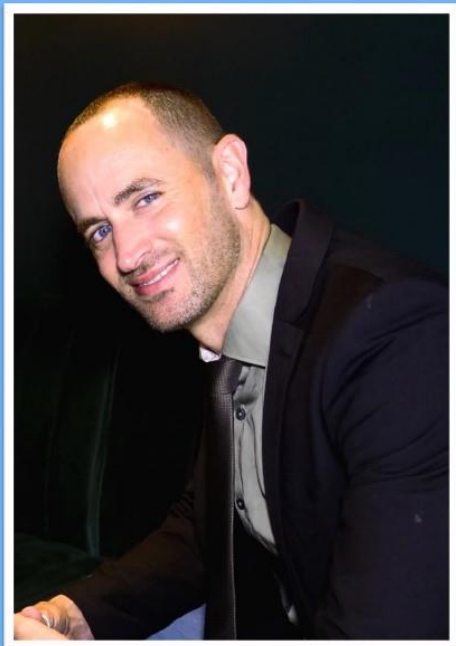


Open meeting about St Richard's

As many of you may be aware the church in Winchelsea Beach is facing serious structural problems.

On Saturday 25th September the PCC voted unanimously to proceed with the possible closure of the church. This decision is supported in principle by the archdeacon and our bishops.

There will be an open meeting at 6pm Wednesday 27th October in Winchelsea Beach Community Hall for parishioners to hear about the nature of the problems, to discuss the issues and put questions to the Rector.



**Niel
du Preez**
piano

**Busoni
Beethoven
Chopin
Scriabin
Liszt**



St Thomas' Church Winchelsea TN36 4EB
Sunday 3rd October at 4pm

Tickets online at winchelsea-arts.org.uk
and at the door

**Winchelsea
Arts**

£16
free for under 18s



winchelsea-arts.org.uk

[Click here to see the concert programme](#)



Four in a Bed at the New Inn

Paul and Debbie Ramsey were contestants on Channel 4's long-running show 'Four in a Bed.

Each of the four couples who run B&Bs visit each other and spend the night. The winner is the establishment that the group votes best value for money.

Filmed before lockdown and shown daily between 20th and 24th September, the result was announced in the fifth and final programme. The New Inn team were runners-up.

You can watch on catch-up here:

channel4.com/programmes/four-in-a-bed

The Tuesday programme is the one where everyone came to Winchelsea.

newinnpubwinchelsea.co.uk



Autumn Show

Winchelsea Garden Society's Autumn Show took place in the New Hall on Saturday 11th September.

The Show was a sign of community life resuming after eighteen months of pandemic restrictions. A sunny afternoon brought plenty of visitors and there were lots of entries for them to see.



Cup winners were Howard Norton (Flowers), John Dunk (Dahlias), Celia King (Floral Art), Geoff Foot (Vegetables and Fruit), Cynthia Martin (Handicrafts).

The Society's Challenge Cup for the exhibit judged Best in Show was won by John Dunk. The Most Popular Floral Art Exhibit, voted for by Society members, was won by Jennifer Sutherland.





New Hall AGM - Saturday 2nd October

Winchelsea New Hall AGM will take place on Saturday 2nd October in the Lower Court Hall at 2pm (please make special note of the venue). All are welcome.

This is an opportunity to hear what has been happening at the New Hall over the last year; how it has been used, improved, developed, and maintained, and what plans are in place for the future. It is a chance to have your say about anything to do with the hall and its use. We welcome all ideas that might make this a more vibrant and useful facility for the whole community.

At the AGM we will be appointing two new members on to the Management Committee. If you would like to do that bit more, by becoming part of the decision making team for all aspects of the New Hall, then please do ring 01797 223754, or contact any member of the New Hall Management Team before, or at, the AGM.

Following the lengthy effects of Covid, we have found lots of enthusiasm for the revival of activities in the hall.

Should you wish to find out more details regarding events, activities, clubs, and meetings, or to discover what facilities are available and how to book, then please do go to our section of the town website, winchelsea.com/new-hall/ You might also like to look at the notice board on the front of the hall to find out even more.

We look forward to seeing you at the Annual General Meeting. Meanwhile, thank you from the New Hall Management Committee.



Open Gardens 2022

Registration is now complete for next year's National Garden Scheme openings. Six Winchelsea gardens will open on 16th April and ten on 18th June.

For 2022 we welcome to the team Chris and Octavia Tancredi who will be opening the garden at *Firebrand* for the first time.

ngs.org.uk



Friends of Winchelsea Church AGM

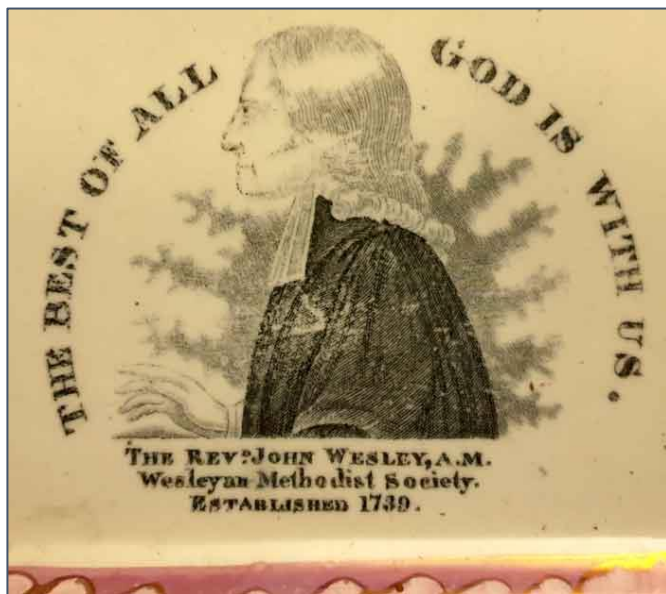
The AGM will be held at St Thomas' at 9.30am on Saturday 30th October.

The Friends of Winchelsea Church is a Registered Charity, whose charitable objects are:

To arouse and foster interest in Winchelsea Church and to co-operate with the PCC in the preservation and improvement of the fabric, furniture, stained glass and monuments of the church and churchyard.

This includes contributions from time to time to the everyday running costs of the church and churchyard and in furthering any other scheme or project to help in maintaining their safety, beauty and utility.

Major projects in recent years include £8,000 for repairs to the south aisle roof and £32,000 towards the restoration of the organ.



Winchelsea Methodist Chapel

There will be a special Harvest Celebration Service at the Chapel on Saturday 2nd October led by the Revd Philip Wagstaff, Superintendent Minister, Hastings, Bexhill and Rye Methodist Circuit.

John Wesley, the founder of Methodism, first visited Winchelsea in 1771. The townspeople formed a Wesleyan Society in 1774 and eventually built their own preaching house in 1785 - 'Evens Chapel'. The building is virtually unchanged since that time.

Wesley preached there in 1789, but when he returned in 1790 so many people wanted to hear him that he spoke in the open air under an ash tree on the west side of the churchyard - the last open-air sermon he ever preached.

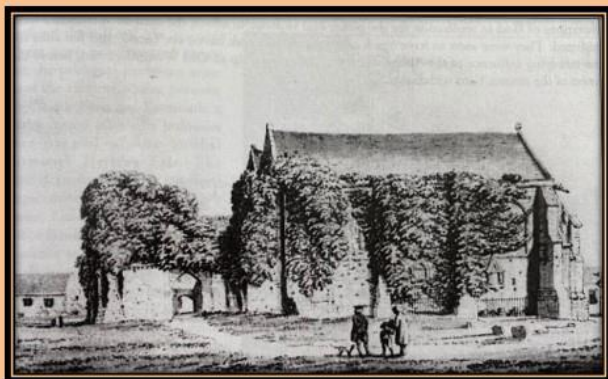
Upkeep is maintained by the Friends of Winchelsea Methodist Chapel. This is an important place for Winchelsea and in the history of Methodism and the Friends would welcome your support. More information on the Chapel website.

winchelseachapel.org

Friends of the Ancient Monuments & Museum of Winchelsea (FOAM)

WINCHELSEA HISTORY A REMARKABLE STORY

**Talk by
MALCOLM PRATT MBE
Local Historian**



The 18th century view of the south front of St. Thomas's Church contains the earliest known depiction of the present Court Hall

**Saturday 9th October 2.30 for 3pm
Winchelsea New Hall**

**Free to members (donations welcome)
Non-members £5**

Raffle

Tea & Cakes served following the talk

www.winchelsea-foam.org.uk

winchelsea-foam.org.uk



Winchelsea Archaeological Society

Saturday 30th October

10.30am to 11.15 on Zoom - Talk

Winchelsea's East Side

Comparison with a medieval fortified village, Monpazier in the Dordogne (above) founded by King Edward 1 in 1284 - four years before he founded New Winchelsea. A look at Strand (East) Gate and the remains of Winchelsea's defences in Rookery Field. Is there evidence for the Friars Well?

12pm to 1pm - Walk

Meet at the Town Well to visit some of the sites on the south and east sides. Details are subject to ground conditions.

Saturday 27th November 11am to 12

Outline proposals for a follow-on research programme will be presented and then thrown open for discussion.

Please contact Andrew at andrewscottb@aol.com or at 3 Hiham Green for details of how to access the meetings.

winchelsea.com/the-town-story/archaeology/



Poppy Appeal

This year's Poppy Appeal will run from 30th October to 13th November.

There will again be no house to house collection in Winchelsea, but it is hoped that donation tins and trays containing poppies and pins will be available at the usual locations in Winchelsea and Winchelsea Beach.

The Farm Kitchen, The New Inn, Winchelsea Lodge, the Co-op, Sutton's Shop, The Ship Inn/Jamie's Butchers and Winchelsea Sands will be asked to host a tin and this will be confirmed in the November issue of the

magazine. As ever, donations will be gratefully accepted by the Royal British Legion (RBL) with gift aid being much appreciated.

Donations can be made electronically to the RBL, Sort Code 30-11-75, Account Number 01937121, using the payment reference SFF24. They can also be made by texting POPPY2, POPPY5, or POPPY10 (to donate £2, £5 or £10) to 70545.

A stock of gift aid envelopes should be available at the back of the Church for cash or cheques (made payable to RBL Poppy Appeal) and these should be placed in the Black Box in the Church, or in any box at a static location, before 15th November.

If you have any difficulty in getting hold of any remembrance material you need, or in making a donation, please call John Rodley on 01797 223458.

britishlegion.org.uk

Remembrance

Provided no new restrictions are imposed, we plan to get back to the pre-pandemic observance of Armistice Day and Remembrance Sunday.

There will be a short Act of Remembrance at Winchelsea War Memorial at 11am on Thursday 11th November and on Remembrance Sunday, 14th, at 11am the Mayor will lead the wreath laying ceremony at the War Memorial. All who wish to lay wreaths during the ceremony are welcome to do so.

There will then be a Service of Remembrance in the Church, with donations made at that service going to the Royal British Legion.



Phone Box postscript

In response to news of the refurbishment of the High Street phone box earlier in the year, Malcolm Pratt sent this story:

Through both his professional work and civic responsibilities, Douglas Turner came to know many officers of the local authorities which served Winchelsea. He was an Icklesham Parish councillor for 37 years, mayor in 1983 and 1984 and ran Turner Brothers, Builders.

This stood him in good stead when he came across a lorry with a crane on it in front of the box, ready to remove it. Winchelsea had been promised that its telephone box would not be replaced during the introduction of what Douglas described as 'those hideous and inappropriate new things'. He therefore challenged the workmen and asked who had sent them.

On being told, he ensured that the removal of the box could not continue by stepping inside it to phone the culprit. 'It's the Mayor of Winchelsea speaking. We have been assured that our telephone box will survive the changes that are going on and yet you have sent a work party to take it away. Why?' A somewhat weary voice responded, 'Oh no! Is that you Douglas? All right, you win. Send them back.' Almost forty years later, the box is still here.



Consult your Councillor

By kind permission of Winchelsea Corporation, Cllr David Smedley will be available in the Court Hall from 7pm to 8pm on the Wednesday evenings prior to the full Icklesham Parish Council Meeting on the following Monday to discuss any issues relative to Winchelsea that may be of concern to you.

Weds 3rd November (Council meeting on 8th)

Weds 5th January (Council meeting on 10th)

Weds 9th March (Council meeting on 14th)

Should you require to make prior contact please call
David Smedley 07538 093981



‘Mary Stanford’ relatives visit

Relatives of the men of the ‘Mary Stanford’ lifeboat visited St Thomas’ last month to see the memorial window to the 1928 disaster in which all seventeen of the crew were drowned.



The impact on the Rye Harbour community was devastating and deeply affected all who lived there. The disaster was also felt worldwide and was front page news in the days that followed.

An annual memorial service is held at Rye Harbour church. The lifeboat house still stands, clearly visible from the Lookout, but was never used again.



The story is told here: winchelsea.com/the-town-story/history/lifeboat-disaster



Second Wednesday returns to the New Hall

On 13th October at 2.30pm we will welcome for the first time architectural historian Kathryn Ferry and her talk "Orientalism-on-Sea".

Hilary Roome writes: Kathryn is the author of several books. I first spotted her on Michael Portillo's Great Railway Journeys, talking about the Lido at Saltdean. It was hard to choose from her interesting list of talks.

2ndWeds@gmail.com



Bank Holiday Cricket Match

The cricket match organised for the naming of the pavilion 'The Steve Turner Pavilion' was a great success. The weather could have been kinder to us, but it did not spoil the afternoon. For the record, the match was a draw.

£1045.48 was raised for Pancreatic Cancer UK. This exceeded all expectations, and thanks to everyone for their support.

It was nice to have a proper sit down cricket tea and hopefully we can get back to this next season.

Jo, Geraldine, Michael, and Steve's sister Marianne and their families would like to thank everyone who attended. The wooden plaque will be fitted before the end of the season.



Literary Society

Friday 8th October

New for our society. Not only is Dr Alastair Niven a literary scholar and author, he is also very influential in literature and in encouraging writing. He was last month awarded the Benson Medal by the Royal Society of Literature for outstanding contribution to literature.

He has been Director of Literature at the Arts Council" and Director General of the Africa Centre, past President of English PEN and a Man Booker Prize judge. Alastair's talk to Winchelsea Literary Society talk is entitled "How do we help writers?"

This meeting is scheduled for the New Hall at the usual time of 7pm for 7.30.

WinLitSoc@gmail.com

<http://winlitsoc.blogspot.com/>



1066 Country Walk renewed

Thanks to a grant of £160,000 secured from the European Agricultural Fund for Rural Development by Rother District Council, the 1066 Country Walk has just been improved with new signage, information panels, benches and sculptures.

East Sussex artist Keith Pettit has created a Bayeux Tapestry themed trail, with ten sculptures at key points along the route. There were launch events on 17th September in Pevensey, Battle and Rye to celebrate the completion of the project.

The 31-mile footpath starts at Pevensey Castle, passing by Herstmonceux Castle, and Battle Abbey. The local section crosses the main road between *The Queen's Head* and Icklesham Church before heading down to Wickham Manor - site of one of the new sculptures, 'The Watcher', shown above.

From there it heads via the Winchelsea Town Sign to the Millennium Beacon and curves round under the NW side of Winchelsea hill, along Station Road to the bottom of Dumb Woman's Lane and follows the foot of Cadborough Cliff to Rye.

visit1066country.com/1066-country-walk



Rye and District National Trust

As we come out of lockdown we can start to implement our planned programme. This is how it looks for October.

Thursday 21st October

We begin our 2021-22 Talks season with a presentation by John and Liz Twyford - 'Bees, catch them if we can'.

John and Liz are very experienced local bee keepers, living in Brede. They are members of the local Bee Keepers Association and Liz is secretary of the Sussex Association. This will be a very interesting talk as they take us through the process of honey production from start to the finished product in the jars.

All Talks start at 2pm at Brede Village Hall.
Admission is £4 for members and £5 for visitors, this includes refreshments after the talk.

For more information, contact Keith Sellens
07940 777250 keithsellens93@gmail.com

You can see more details of these events in our Newsletter at nationaltrust.org.uk/features/rye-and-district-association



Soprano and oboe recital

There will be a recital of music for soprano and oboe at St Thomas' on Saturday 16th October from 5pm to 6.30. Entry is by donation in aid of the 'Raise Your Voice' Dementia Singing Project.

Simon Edge-Partington (oboe) and Alessandra Testai (soprano) will be accompanied by Howard Beach (piano) to perform music by Purcell, Handel, Mozart and others.

raiseyourvoice.org.uk





Strandliners at Winchelsea Beach

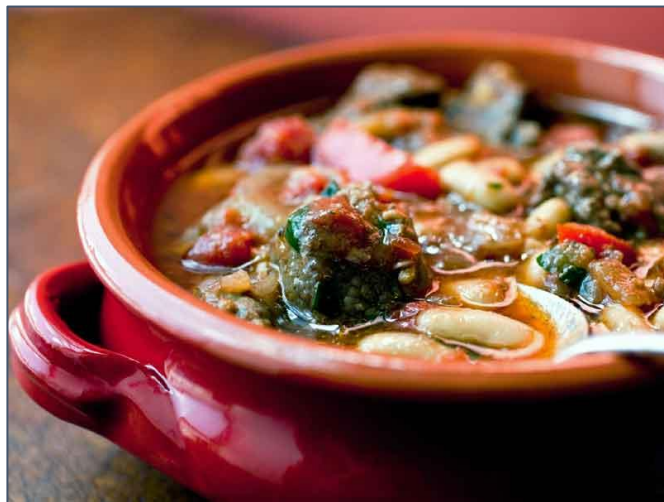
Volunteers old and young were out in force on Saturday 25th September. Armed with pickers, rubbish bags and rubber gloves, thirty or so local people took part in one of Strandliners regular beach cleans.

They were also surveying for plastic pollution, and recording the data for organisations including the Marine Conservation Society, Break Free From Plastic and Surfers Against Sewage. By identifying where different sorts of plastic litter come from, the aim is to help put in place the steps to stop the pollution it causes.

Strandliners' volunteer activities range along the coast from the River Cuckmere in the west to Dungeness in the east; from Pett Level and Camber Sands on Rye Bay, up the River Rother to Brede and beyond.

The rubbish we see on our beaches and along the river banks can come from many sources: litter dropped on the beach and inland, lost fishing equipment, poorly managed waste systems, sewage related debris down toilets, and more.

strandliners.org



Fellowship Lunch

Lunches resumed in September and the first one went really well and everyone seemed very happy to be there. The next will be on Friday 29th October in Winchelsea Beach Community Hall, 12.30 for 1pm. Booking is essential. Contact Mary Parker 01797 229798 or 07927 107678.

Mothers' Prayers

The mothers' prayers group meet at 10am on the first Tuesday of each month at St Richard's. The next meeting is on Tuesday 5th October at Cynthia Martin's home, El Indalo, Old Harbour Farm Lane, Winchelsea Beach. 01797 226074. Any mothers who would like to pray for their children and grandchildren are welcome to join us.

Christmas Fair

The Winchelsea Christmas Fair will be held in the New Hall on Saturday 13th November from 11am to 3pm. It's the ideal opportunity to find perfect gifts for Christmas.

There will be a wide range of stalls, many of them new for 2021, featuring local producers and artisans selling everything from jewellery, clothing, artwork, walking sticks and bags to ceramics, antiques, collectables, prints and winter bulbs.

We will also have a "food hall" which will be offering wine tasting and selling a range of festive treats, bubbly, chocolates and chutneys.

As well as refreshments, this year there will be one tombola for children and another for adults with a theme of drinks, Christmas goodies and chocolates and sweets. We would welcome donations for the tombola by Tuesday 9th November. Please drop off at Wren Cottage, High Street, or contact Chris Chappell or Ali Casey who will gladly collect from you.

Ali.Casey63@gmail.com

ChrisWinchelsea@icloud.com

Tickets will go on sale for the Grand Christmas Raffle in the shop on Saturday 23rd October or can be purchased from Rosemarie Roberts rroberts96@yahoo.co.uk or on the day at the Christmas Fair. We have some fabulous prizes; look out for more details coming soon.

To help us make the New Hall particularly festive this year we would like to decorate the hall for a Christmas Fair to remember! So if you have any white Christmas lights or a Christmas tree you could lend just for a few days (decorated or undecorated) we would really appreciate it.

Please contact Hilary Roome who is happy to collect.

roome12hilary@gmail.com

All proceeds from the Christmas Fair will go to the New Hall and Rye Food Bank.



WINCHELSEA
Christmas Fair
& Grand Christmas Raffle

Saturday 13th November
11am - 3pm

Winchelsea New Hall

In aid of the Winchelsea New Hall (Reg. Charity No. 235174)
and Rye Food Bank



Christmas Windows 2021

It's that time of year again! Following on from the success of Winchelsea Christmas Windows 2020 the team are now planning for 2021. We hope every resident in Winchelsea will be involved either as a participant - a supporter, an appreciator - a maker, designer, creator.

If you want to display a Christmas Window it can be very simple: a light, a silhouette simply lit by a torch, a tree, a star, just a light or two, be it a decorated window or as complicated as you want to make it.

This is not a competition. The aim is that we come together as a town, celebrating Christmas by showing something Christmassy in a window. As Covid restrictions ease, we are hoping for more visitors to enjoy the trail and the Church as the centre of the town.

Funds raised through craft sales, brochures, trail maps donations and sponsorship will go to local charities - this year, to be decided at the AGM.



Windows AGM - Thursday 14th October

Our first official AGM is on Thursday 14th October at 6.30pm in The New Hall. Please come with new ideas for charities to support. Any comments on Christmas Windows in Winchelsea will be welcome. Please attend to hear the celebratory proposals for this year, be they grand or modest. You will be welcomed with a glass of wine, tea or coffee - and enthusiasm. Please come!

The Winchelsea Christmas Windows Team.



Rescue Boat

Since our last update, the Open Day count-up has been completed and we're very pleased to share that the final amount raised is £6,814.65 - a record-breaking amount in the history of our Open Days. Huge thanks to everyone who helped, participated and donated, it really made a difference on the day and will certainly support our future funding.

As the stay-cation summer gives way to autumn, our volunteers have stayed very busy. September saw several occasions where our teams were tasked by HM Coastguard to launch or to assist other services in incidents. These included launching to recover an abandoned vessel and to assist a person in water, as well as for First Aid assistance to a person with a suspected broken leg.

First Aid from the boathouse has also continued, particularly to individuals with cut hands and feet from the rocks, which features as our most-requested first aid activity this year. Speaking of which, several volunteers have recently refreshed their First Aid certificates and more courses will be undertaken over the coming year.

(First Aid team photo above.) We've also welcomed five more new volunteers to the team - one to the boats and four to assist our on-shore base and boathouse activities, plus our fundraising efforts.

Coming up this month, we have an announcement about the winners in our 2022 Calendar Competition, followed by calendar printing. Once the calendar's printed, we'll then be doing the rounds of Christmas Craft Fairs with these and our other merchandise, so please look out for us and support our self-funded charity in your countdown to Christmas.

The charity shed will be closing this month for the winter but its hard work of fundraising and keeping usable items out of landfill will continue online in our monthly Facebook auctions, so please keep your donations of usable household and gift items coming and join in with the auction online.

Beach safety of course is a continued focus as the days draw in and the weather changes into winter-mode. Please do remain aware of weather warnings, seasonal tides and currents and be mindful of continued rockfalls all along the local coastline.

Until next time, stay safe, take care and be beach aware. If you'd like to keep in touch, please check out our website <https://plirb.com> or our social media: Twitter @PLIRBRescue; Facebook @PettLevelRescueBoat and Instagram @pettlevelindyrescueboat.





Rye Food Bank

The next Winchelsea collection date is Tuesday 19th October.

The Food Bank Co-ordinator, Chris Emson, sends thanks to all the members of St Thomas' Church who donated their Harvest Festival gifts. This unexpected kindness, was greatly appreciated by those local families in need, who we support.

If you would like to donate food items the Rye Foodbank, please give Cam a ring, so he can co-ordinate a pick-up from your front door. Thank you!

Donald Cameron-Clarke 01797 226414

Winchelsea Church and Town Calendar October 2021

- Saturday 2nd Church Market - 10.30 till 12
Harvest Celebration at Wesley's Chapel - 11am
New Hall AGM - Court Hall (*not New Hall!*) - 2pm
- Sunday 3rd** *Trinity 18* **9.30am: Parish Eucharist at Icklesham**
11am: Parish Eucharist at St Thomas'
Winchelsea Arts Concert - St Thomas' - 4pm
- Tuesday 5th Mothers' Prayers - 10am
- Friday 8th Literary Society - New Hall - 7pm for 7.30
- Saturday 9th FOAM talk - New Hall - 3pm
- Sunday 10th** *Trinity 19* **9.30am: Parish Eucharist at Icklesham**
11am: Parish Eucharist at St Thomas'
- Wednesday 13th Second Wednesday talk - New Hall - 2.30pm
- Thursday 14th Christmas Windows AGM - New Hall - 6.30pm
- Saturday 16th Soprano and Oboe Recital - St Thomas' - 5pm
- Sunday 17th** *Trinity 20* **9.30am: Parish Eucharist at Icklesham**
11am: Parish Eucharist at St Thomas'
- Sunday 24th** *Last after Trinity* **9.30am: Parish Eucharist at Icklesham**
11am: Parish Eucharist at St Thomas'
4pm: Service for the Departed at St Thomas'
- Wednesday 27th Meeting on future of St Richard's - W B Community Hall - 6pm
- Friday 29th Fellowship Lunch - Winchelsea Beach Hall - 12.30 for 1pm
- Saturday 30th Friends of Winchelsea Church AGM - St Thomas' - 9.30am
Winchelsea Archaeological Society talk and walk
- Sunday 31st** *4th before Advent* *All Saints*  *Clocks go back*
11am: Joint Benefice Eucharist and Confirmation at St Thomas'
No service at Icklesham
- Sat 6th Nov Church Market - 10.30 till 12
Residents' Association AGM - New Hall - 11.30am
- Sun 7th Nov** *3rd before Advent* **9.30am: Parish Eucharist at Icklesham**
11am: Parish Eucharist at St Thomas'

Further ahead

- Sat 13th Nov Christmas Fair
Winchelsea Arts Concert
- Sun 14th Nov Remembrance Sunday



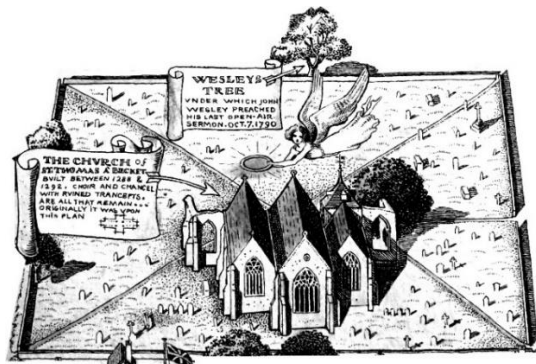
Please send copy for the November Magazine to
ryeview@gmail.com
before Sunday 31st October

For Winchelsea Beach information go to
winchelseabeachcommunityassociation.co.uk

For Winchelsea information go to
winchelsea.com

For more information about the Church go to
winchelsea-icklesham-churches.org.uk

For weekly news from the local area go to
ryenews.org.uk



Rector of Winchelsea and Icklesham

The Revd Jonathan Meyer

The Rectory, St Thomas Street, Winchelsea TN36 4EB

01797 226254 revdjonathan@btinternet.com

The Rector's day off is Monday

Churchwardens

Charlotte Beecroft

Burrin House, North St TN36 4HX

01797 223159 ccmburrin@gmail.com

Celia King

Stargazer, Morlais Place TN36 4LG

01797 227858 sake.king@hotmail.com

PCC Secretary

Angela Hill

Friars Halt, Friars Road TN36 4ED

01797 226325 angelam.hill@btinternet.com

Parish Treasurer

Vacancy

Gift Aid

David Jefferies

Wee Five, Sea Road TN36 4LH

01797 222904 pamela.jefferies@sky.com

Electoral Roll Officer

Jeremy Naylor

White Cottage, Friars Road TN36 4ED

07985 734936 jrnaylor@gmail.com

Organist

David Birchenough

07840 595338 daviddaorganist@icloud.com

St Thomas' Choir

Marion Lovell

7 Oast House Field, Icklesham TN36 4BP

01424 815247 marion@abingworth.plus.com

St Thomas' Primary School

Headteacher Carol Gardiner

Friars Road TN36 4ED

01797 226479

office@st-thomas-winchelsea.e-sussex.sch.uk

St Richard's Chapel Warden

Mary Parker

Solstice, Sea Road TN36 4LH

01797 229798 maryalan.parker@btinternet.com

St Richard's Secretary

Pamela Jefferies 01797 222904

St Richard's Treasurer

David Jefferies 01797 222904

Friends of Winchelsea Church

Chairman Ben Chishick

Tower Cottage, Barrack Square TN36 4EA

01797 226653 towercottage@btinternet.com

Treasurer Stephen King

Stargazer, Morlais Place TN36 4LG

01797 227858 stephenking408@btinternet.com

Parish Magazine

Editor David Page

Rye View, The Strand TN36 4JY

01797 226524 ryeview@gmail.com

