

WINCHELSEA PARISH MAGAZINE

1st August 2021





Coming together

Winchelsea Corporation are planning a reception for the town during the August Bank Holiday weekend.

It will be a chance for everyone to come together again after such a long period when community events were impossible, and an opportunity for new residents and established residents to meet each other. It will be an informal event, so please feel free to drop in and leave when you wish.

We are working on the basis that Covid rules won't change back in the meantime. We'll be putting flyers through doors and information on winchelsea.com nearer the day to confirm everything.

The reception will take place at the New Hall on Saturday 28th August between 12 noon and 2pm and we look forward to seeing you there. If you can let us know beforehand if you're going to come, that will help us ensure the drinks and canapés don't run out.

winchelsea.tc@btinternet.com

David Page, Mayor



Reflections from the Rectory

The other day I went the exhibition at the British Museum, “Thomas Becket, murder and making of a Saint”. It was interesting to get further insights into the life of our patron saint. Indeed there has been a lot about Becket in the press recently and I noticed an article on the BBC website.

It seems that through the use of modern dating techniques, some of the stained glass in Canterbury Cathedral may have been considerably than previously thought. Some sections of glass date from the middle of the 12th century and consequently would have been in the cathedral at the time of Becket's murder.

Not only that, they would have been there at the time of Henry II's penitence - when he came kneeling to pray for forgiveness for his sin. They also survived a disastrous fire in 1174 and were probably kept aside when the restoration of the cathedral was done prior to the establishment of the shrine to Beckett in 1220.

The series of windows are the so-called Ancestors of Christ. Not those names recorded in the genealogy as listed by Matthew but figures from the Old Testament who foretold and preceded the life and ministry of Jesus. One of these was that of the prophet Nathan, thought to be earlier not only because of the dating techniques but also for stylistic reasons.

Nathan was not one of the prophets remembered by a book of oracles in the Old Testament but a figure who appears in narrative speaking truth to King David.

You will remember the narrative of David and Bathsheba. David captivated by the alluring charms of Bathsheba as she bathes on the roof and then having seduced her contrives to send her husband Uriah the Hittite into the frontline in the hope that he will be killed after he realises that Bathsheba has conceived while her husband was on military duty.

Nathan was told by God to tell David a story of a rich man with many flocks and herds and a poor man with nothing but a little ewe lamb, which grew up with him and his children and was like a daughter to him. The rich traveller seized the little lamb and prepared it for a guest who was visiting.

David's anger was aroused and he said, "As the Lord lives the man who has done this deserves to die" - and that Nathan delivers the punchline, "YOU are the man!" (In Hebrew the lack of the verb to be and the word order is even more dramatic - "The Man - YOU")



Whether Henry pondered on this story or not when he first made penance on 12th July 1272, we do not know, but he made many other visits to Canterbury before he died. Few have the blood of an archbishop on their hands but perhaps there is a lesson not just for kings but to us all, to be aware of our short-comings and when

we are fully aware of them to be truly penitent – how often have our own glorious windows been witness to confessions over the years and how they continue to glow with the light of God's forgiveness?

Jonathan

Sunday Services

Our regular Parish Eucharist takes place at 11am at St Thomas' on Sunday mornings. All are welcome. We are now permitted to sing although the use of masks, when possible and sanitising are still encouraged.

For the service on 29th - the fifth Sunday - we will be joined by the Icklesham congregation and there won't be a service at All Saints and St Nicolas on that day.

Churchyard Working Party

Thursday 5th August 10.30am

There are always things that need attention in the churchyard and there will be a chance to help with various tasks such as removing weeds and ivy (with care). A number of people have already volunteered, if you would like to volunteer please let me or Shirley know. We plan to meet as above. Refreshments including beer and sandwiches will be offered after our tasks. Your help would be much appreciated.

winchelsea-icklesham-churches.org.uk



Gardens raise over £12,000

This summer's season was completed last month when six Winchelsea gardens opened for St Michael's Hospice, attracting over 300 visitors and raising £2,773.

Added to the sum collected when Winchelsea Beach gardens opened in June, this makes a total of £6,373 raised locally for the Hospice.

The National Garden Scheme openings in mid-June raised £6,300. Nationally, the main beneficiaries are Macmillan Cancer Support, Marie Curie, Hospice UK, Carers Trust, The Queen's Nursing Institute and Parkinson's UK. £2.88 million was distributed nationally in 2020.

Plans for openings in 2022 are already beginning and we very much hope to add one or two gardens to the NGS June list that haven't been open before.

www.stmichaelsospice.com

<https://ngs.org.uk>



Winchelsea Residents' Association

A big thankyou to the 100+ residents who showed an interest in signing up online in support of a Residents' Association for Winchelsea, and thanks to the 60+ residents who attended the event in Winchelsea New Hall on Thursday 22nd July.

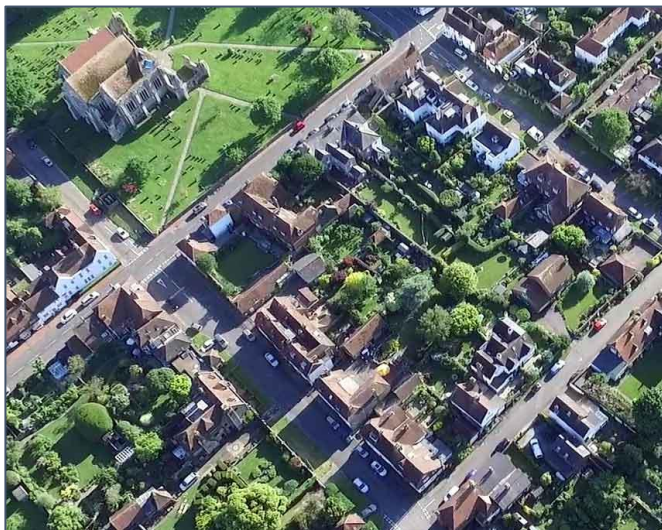
The purpose of the meeting was to see if the formation of a Residents' Association was the way to go. We were left in little doubt that it was.

The next priorities are to establish the association, agree a constitution, form a committee and canvas opinions from the residents as to their priorities and interests.

Anyone who would like to stand for the committee, engage in the function of the association, help out with the setup of social media, etc., please make yourself known by emailing us at info@winchelseaRA.com.

Keep a look out for the new website winchelseaRA.com - it will be up and running soon. Thanks again. The success and future of the Residents' Association lies with you.

Brian Leonard, Jane Taylor, John Clarke, Laurie Rutman, Richard Plumb, Cathy and Paul Veys.



Conservation Society's Covid Year

In the last few months the committee of six has met several times and here is a summary of our work.

The society via its committee has supported residents of the town with respect to contentious building plans on three sites especially in Barrack Square and Friars Road. The latter involvement is on-going.

We gave our total support to the restoration of *The Glebe* also on-going. This is a superb example of sensitive repairs and improvement to an historic property which was in parts in danger of collapse. Separately, we have been pushing Rother D C to ensure the repair and improvement of a Grade 2* house in North Street. This has been almost unliveable for over a decade. There are 2 other houses in Winchelsea with other serious problems.

We have found it difficult to discuss problems of listed buildings in Winchelsea, a conservation area, with Rother DC and remain concerned about the level of service in the Planning Department there. Our RDC councillors are hopefully supporting our case. We have also been in contact several times over the last year, with Historic England and the Society for the Protection of Ancient Buildings. There have been discussions with

the National Trust with respect to the buried town wall, another Ancient Monument in Rookery Field. The danger here is from the roots of nearby trees. If these are blown over in a gale there will be damage or destruction of the remaining town wall. A visit to the site with the NT Archaeologist, Natalie Cohen, is now possible given that Covid restrictions are being lifted.

And then there are the deteriorating *Greyfriars* ruins, another Ancient Monument. We hope some repairs might just be undertaken soon. We have been pushing for legal enforcements to bolster Historic England's hand, when dealing with any deteriorating Ancient Monument or Listed building in private hands. Our MP, we hope, is raising the matter in the House of Commons soon.

An unnamed member of the committee had the idea to safeguard the somewhat neglected telephone box, in the first instance as a working addition to our town's infrastructure. Luckily the inhabitants of the adjacent cottage were very enthusiastic and in no time organised BT to repaint it. An easy win! Please do make the occasional, expensive (60p) call from there to show BT we want to keep a working phone box.

Finally our only objective is to help this beautiful and historic town in the maintenance of the built environment and the green spaces which we are so fortunate to have. We aim as a society to be a helpful resource for anyone in this town. We hope soon to reinstate our occasional lectures and have reinstated the visit to see conservation successes at Knole in Kent on 15th September. Please do support this long-planned trip to go behind the scenes and enjoy an amazing stately home.

Although it has been a busy year for the committee, we now feel the time is right to reopen our membership to anyone in the town interested in conservation matters. The annual fee is a massive £3 per person and our treasurer, Judith Payne, Evens, Rectory Lane, is happy to receive cash or cheques. We would very much like to welcome lots of new members.

John Spencer (on behalf of the Committee)

OUR FAVOURITE THINGS



A charity fundraiser concert by the Mayor
and former Mayor of Rye

Mezzo – Rebekah Gilbert
Baritone – Jonathan Breeds
Accompanist – Richard Eldridge

In aid of the Mayor's charities *

St Thomas' Church – Saturday 14th August
Doors 6.30 for 7pm, Close 9pm

Tickets £18 in advance
to include a welcome glass of wine from
info@vivawellbeing.com
or £20 on the door.

**Free music lessons for students with the Rye Wurlitzer
Academy, and funding for young people starting up new
businesses in association with
the Rye Old Scholars Association*



Special cricket match

Postponed from last month, the cricket match in honour of Steve Turner will be held on Bank Holiday Monday, 30th August.

Steve died two years ago and the match will be a fundraiser for the Pancreatic Cancer charity. The Winchelsea Cricket Club pavilion will be named in Steve's honour.

WINCHELSEA SUMMER FETE

& FUN
DOG
SHOW

14th
August
12.30pm
on the
Cricket
Field

GAMES
TEAS
BBQ
BAND
STALLS

£1
Entry
Children
Free

Organised by Winchelsea New Hall

(Reg. Charity No. 235174)

*Proceeds to: New Hall, Rother Responders,
The Rye, Winchelsea & District Memorial Hospital
and Kent, Surrey and Sussex Air Ambulance*

Winchelsea Summer Fete

14th August

The committee of the New Hall is delighted that the fete can go ahead this year. It seemed rather touch and go a few months ago! So once again the scenic cricket field will resound to the sound of excited canine entrants to the Fun Dog Show (and their excited human partners).

Why not try your hand at the games, including Tombola and a Bottle Stall, and browse the stalls. Enjoy a barbecued treat, followed by ice cream and, from 1.30pm, tea and cake. The barbecue will be provided by Pett Level Inshore Rescue Boat (PLIRB) and they will take the proceeds. If not needed for action the boat may be on display at the fete.

Is your pet pooch adorable? Then he or she could win a prize in one of a range of categories. You could also be lucky in the raffle draw to round off the afternoon.

Prizes include £100 in cash, a voucher for The Rye Retreat and a bottle of wine from our own local Charles Palmer Vineyard, as well as many other prizes.

The fete starts at 12.30pm. Entry costs £1, children free. (It would be very helpful if you could bring the correct money for your entry to minimise cash handling.)

The proceeds will be distributed among local good causes including Rother Responders, Rye and Winchelsea District Memorial Hospital, Kent Surrey and Sussex Air Ambulance and the New Hall. Winchelsea New Hall Committee.

The Tombola Stall

This year we are very short of donations, large or small, so please if you can donate any item please contact Lyn Davidson to arrange collection or delivery. Thank you.

The Tombola Team

01797 223754 07837 760135



F O A M

FRIENDS OF THE ANCIENT MONUMENTS

**NEEDS YOU TO RAID YOUR
WINE CELLARS**

FOR DONATIONS TO THIS YEAR'S

**BOTTLE STALL
AT THE SUMMER FETE
AUGUST 14 2021**

**JOHN LUSK EAGERLY AWAITS
YOUR CALL**

**ON 224290 OR 07889
604862**

**TO ARRANGE DELIVERY OR
COLLECTION**



New Hall News

Welcome back! We have had so many great comments about the hall recently, from people viewing the hall when considering bookings for weddings, and other events. It is a tribute to the considerable development and maintenance work carried out during lockdown, and before, and we would like to thank everybody involved.

The New Hall has now fully re-opened for bookings and events since the government COVID rules were relaxed on 19th July. We do ask, however, that all our hirers and users remain cautious. In the interests of everyone's safety we will continue to supply hand sanitiser, and extra cleaning materials, and encourage you to continue to use the official NHS QR code displayed to check in. Please feel free to wear face coverings, and make full use of our new easy to open windows and doors to increase ventilation.

Do look at the New Hall section of winchelsea.com to find out about the diverse range of activities and events on offer, and also how to book. Please note the additional very popular Pilates Classes now on Mondays as well as Fridays at 9.30am. Contact Hannah on 07936 151529 or email hannahpilateshastings@gmail.com for more information, or to book a space.

Our next main event is the Summer Fete on Saturday 14th August. Also, a one-off special opera event will be taking place at the hall on 4th September. Please email dejltonkinson@btinternet.com or ring 01797 224363 for details. This should be a class event.

Finally, we'd like to give advanced notice of our AGM, which this year will take place on Saturday 2nd October at 2pm in the New Hall, when we will be looking for a new member of the community to join our very active management committee.

For all enquiries regarding the New Hall, or to make a booking, please contact 07422 724051 or email newhallbooking@winchelsea.com

Thank you from the New Hall Management Committee



Strand Gate. From a collection of magic lantern slides held at Hastings Library

OPERA

FOR A LATE Summer Evening



4th September - 7pm

Winchelsea New Hall

TN36 4AA

WITH

**Paul Hopwood
Thomasin Trezise
Philip Smith**

**From Glyndebourne
and The Royal Opera House**

Tickets £35

*Includes a complimentary glass of English
sparkling wine and canapés. Bar.*

Tel: 01797 224363

Email: dejltomkinson@btinternet.com

Dress: Black Tie or Lounge Suit

*All funds raised in aid of Rye Harbour
Sailability (RHS) www.ryeharboursailability.org*

SPONSORED BY



Sailability

Rye Harbour Charity Number: 1163222



Winchelsea Arts

Sunday 19th September at 5pm
‘Autumn Winds’ Magnard Ensemble

Since making their international debut at the Culture and Convention Centre Lucerne, Switzerland in January 2017, the Ensemble have appeared at venues such as Wigmore Hall, Bridgewater Hall and St Martin-in-the-Fields as well as festivals and concert societies nationwide, including a residency at the Britten-Pears Foundation, Aldeburgh. The concert will focus on music based around the themes of harvest and autumn. The church will be decorated for harvest festival which takes place on the same day.

There will be six concerts in the 2021-22 season. A single subscription to all six costs £80, £150 for a joint subscription. Individual concert tickets cost £16 and under-18s are admitted free.

You can get up-to-the-minute news by clicking the ‘Sign up to our mailing list’ button on the website.

Season tickets and individual concert tickets can be bought online at www.winchelsea-arts.org.uk

[Click here](#) to see the full season programme



Winchelsea Anniversaries

25 Years Ago

Under the headline 'Smallest bank victim of technological age' the *Rye and Battle Observer* reported in its edition of 2nd August 1996: 'The smallest bank in England — Nat West in Winchelsea High Street — is set to close. The closure was announced this week following a review of services in the area but Nat West said there would be no job losses'.

The article went on to explain that the Winchelsea branch, administered from the one at 85 High Street, Rye, would close on 4th September. Ted Jackson, the Rye Branch manager, was quoted as saying 'It is very sad as it was a lovely little branch. But at the end of the day it was kept open for longer than was really viable as a service to local people.

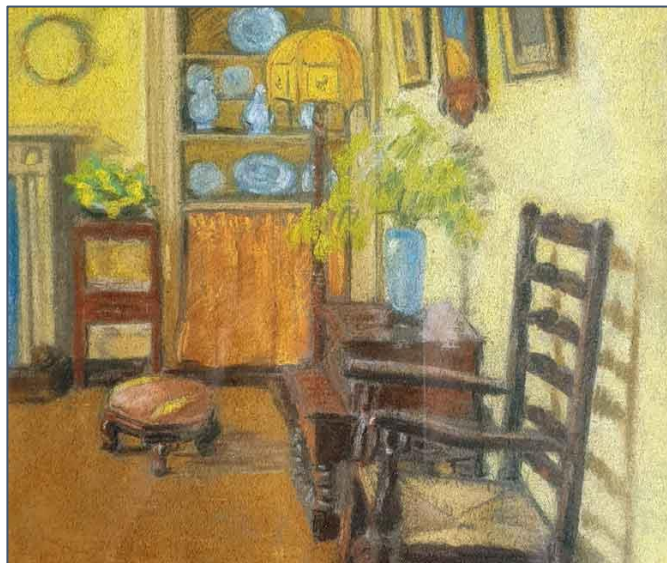
It was not a decision that was taken lightly or swiftly. The bank monitor closely the volume of business transacted, average numbers of customer visits and operational costs. We also consider changing customer needs, the increased use of plastic cards, increased expansion of cash machines and growth of telephone banking. We are concerned now, as always, to ensure customers receive a first class service'.

Mike Howells, regional manager for Nat West, also issued a statement: 'As a retail organisation we need to be aware of changing customer habits and needs. We continue to invest in new technology to meet these needs. This means we need to continually review our representation and closure of this sub-branch has been the result of that review. Staff at Winchelsea have been notified of the closure but will be retained at the Rye office which has operated in the High Street for the past 150 years'.



Looking back over the twenty-five years since Winchelsea's tiny Nat West Branch closed and the vastly accelerated changes and closures which have happened during that time one might perhaps wonder how much those changes have been driven by the needs of the banks and how much by the actual needs of the customers.

Malcolm Pratt



Art Exhibition looks to 2022

Winchelsea's Millennium Artefacts Committee regret that for the second year our annual art exhibition will not take place. Next year will be our 24th, when it is hoped that once again we shall be able to hold the three-day event which takes place over the August Bank Holiday weekend.

Winchelsea's artists are joined by other local artists, and sales help raise funds for the Town Artefacts: the Town Sign, the Millennium Tapestry and the Beacon.

Geraldine l'Anson, Hon. Secretary



Railings repair

The temporary barriers have now been in place long enough to start merging with the roadside undergrowth but East Sussex Highways tell us that they have scheduled the repair of the railings by the Strand Gate to begin on 27th September.

Little Shop Association

Winchelsea Little Shop Association AGM will be held on Saturday 21st August at 10am at the New Hall.
All shareholders are welcome.

Any shareholder who has not yet supplied an email contact address is asked to kindly send details to shopassociation@gmail.com as this will greatly help us in distributing information.



Garden Society Autumn Show

Winchelsea Garden Society's shows finally resume on Saturday 11th September, with an Autumn Show starting at 2pm in the New Hall.

To celebrate our return, this one will be open to anyone who wants to enter, whether you are a member of the Society or not.

If you already have a copy of the 2020 Show Schedule booklet, the details (apart from the date) are all carried forward to 2021. If you don't have a copy, please contact Graham and Sally Rhodda at *Cleveland Place* in Friars Road and you can collect one from them - 01797 226062.

To check out the many different items you can exhibit - flowers, floral art, fruit, vegetables and handicrafts - [click here](#).

PETT LEVEL INDEPENDENT RESCUE BOAT **OPEN DAY**



**WIN A £5K HOT TUB + BBQ
+ REFRESHMENTS + SEA DISPLAY
+ STALLS + MORE**

11-3PM 29TH AUGUST 2021

PLIRB BOATHOUSE, PETT LEVEL ROAD, TN35 4EH

UK charity 286891



www.PLIRB.com

Rescue Boat

And into August, with some sun - and wind too. Here at Pett Level Independent Rescue Boat, we hope everyone in Winchelsea is faring well for the summer. And what a busy one it continues to be.

The full opening up from 19th July, followed by the school holidays saw the stay-cation season truly start. As a result, our volunteers have had several call-outs and stand-by incidents, so we are continuing an increased presence at the boathouse each weekend - with some monitoring and maintenance visits during the week too.

Many recent rescue activities involve visitors cut off by the tides, whilst first aid has been in response to falls on the rocks, so if you're hosting visitors to the area, please warn them about these local hazards.

Summer is also a community fundraising season and it's wonderful to be back 'out there' with events on the calendar.

Our volunteers and Tornado boat were hosted by Winchelsea Beach Co-op for two awareness days and raised over £500 across both visits. Thank you to Mark and the staff of the Co-op, and all the customers who contributed.

We're coming up to Winchelsea Fete on August 14th and are so looking forward to meeting up with locals then. Please come and chat to us about our work and about volunteering with us.

Our own Open Day is scheduled for Sunday August 29th, 11am - 3pm. We have lots of stalls and fun activities and all are welcome. This event is also the Grand Draw of our Homewood Leisure Hot Tub raffle - with the prize of a £5k hot tub. Tickets will be on sale right up until the draw by Stuart Homewood.

This month we're also starting a trial of our online version of Barbara's Charity Shed. We're hoping this will be our new 'winter-friendly' way of maintaining the fun and fundraising through donated items, by

extending Barbara's charity shed to include a regular Facebook auction. It runs from 1st - 8th August and you can jump in at any time across the week, so please visit and join our auctions group on Facebook - @PettLevelRescueBoat.

As well as this, our fundraising efforts are focused on the PLIRB calendar for 2022. This year it's running as a competition, so please contribute your photos of our beautiful coastline. The competition closes on 30th September, so there's still time to get cameras out and entries in. See here and our social media for details.

Finally, seasonal safety continues to be about the many rock falls in the cliff areas this year. Please be aware of the potential hazards from both cliff top and cliff bottom. And as extreme weather seems to be a regular feature along the coastline, please do also pay attention to weather warnings, as both cliff-based and beach communities can be badly affected and at risk, so please do stay safe, take care and be beach aware.

Until next time, stay safe, take care and be beach aware. If you'd like to keep in touch, please check out our website <https://plirb.com> or our social media: Twitter @PLIRBRescue; Facebook @PettLevelRescueBoat and Instagram @pettlevelindyrescueboat.



Rye and District National Trust

Friday 10th September

Annual Golf Day

This year, for the first time, we are having our Annual Golf Day at Tenterden Golf Club. For details and Booking Forms please contact Marion Brunt 01424 883566 marionbrunt@btinternet.com

Saturday 18th September

Autumn Lunch

Originally planned for Spring 2020 we are pleased to offer a new venue for us as we hopefully return to 'normal'. Flackley Ash Hotel, Peasmarsh, 12.30 pm for 1.00 pm. The cost will be £26 pp. For details and Booking Forms please contact Keith Sellens 07940 777250 keithsellens93@gmail.com

Thursday 14th October

Theatre Outing to see 'Looking Good Dead' at the Theatre Royal, Brighton.

The World premiere and stage adaption of the book by the well-known and highly popular crime writer, Peter James, comes to Brighton's Theatre Royal - and Peter James's home city. Peter's serial character, Superintendent Roy Grace features in the play. We will arrive in Brighton in time to enjoy a pre theatre lunch, so this should be a wonderful day out!

The combined cost of the theatre and coach (including gratuities) is: £51.50 per person.

Bookings have been extended and must now be received by 31st August. If the show is cancelled all monies will be returned. For details and Booking Forms please contact Keith Sellens 07940 777250
keithsellens93@gmail.com

You can see more details of these events in our Newsletter at nationaltrust.org.uk/features/rye-and-district-association





Greetings from Anne Simpson

Greetings to you all from Milford on Sea, Hampshire; I am so sorry that, because of Covid precautions and time constraints it was not possible to say a personal goodbye to many of my friends in Winchelsea. When I moved to the town in 2003 I imagined that I would end my days among you, but life does not always turn out as we expect! My years in Winchelsea have been very happy and fruitful, and I shall miss you all, and the gentle rhythm of life in the ancient town.

Moving is often a traumatic time, and the immanent closure of the stamp duty window put considerable extra pressure on the process. After over forty fruitless phone calls, I was fortunate in finding help from a fabulous removals firm, Bray and Son of Maidstone. Everything done quickly and efficiently with no damage whatsoever, and the foreman even protested that my tip was “too much”!

I am slowly settling in to my new life, with the sea, and my daughter's beach hut, just across the road, and a lovely garden below my windows. Thankfully, the extensive lawn is cut every week by someone else! No doubt I shall shortly find opportunities to make use of my baking and other skills in my new community, once I have got to grips with my complicated new oven..... Thank you, dear Winchelsea, for being such a rewarding part of my life for so long, I send love and greetings to you all. *Anne Simpson*



Sue Chetwood

Sue died on 12th July. Seen here in her role as churchwarden when Bishop Martin visited in 2012, Sue was for several years a foundation governor of St Thomas' Primary School. Resident in Winchelsea and Winchelsea Beach for many years, she brought up her family here and always took an active part in the life of both communities.

There will be a short cremation service in Hastings on the morning of Friday 6th August, followed by a memorial service at St Thomas' at 1pm.



Sandra and David's thanks

Sandra and David Merrifield would like to thank their friends in Winchelsea for the cards and letters of condolence so kindly sent following the sudden death of Sandra's beloved son Simon. It was a great comfort to receive so many kind, thoughtful and heartfelt messages.

Celebration of the life of Alan McKinna

Jonathan Murphy filmed July's service, and the recording is on YouTube.

The link is <https://youtu.be/A5fYSAxeTDw>



**RYE, WINCHELSEA & DISTRICT
MEMORIAL HOSPITAL INVITES
YOU TO OUR**

CENTENARY OPEN DAYS

Come and join us on one of the following dates at The Hub on Rye Hill to celebrate the Centenary of the Rye, Winchelsea and District Memorial Hospital which has been serving the local community for 100 years!

**FRIDAY 24 SEPTEMBER
2-4PM**

**SATURDAY 25
SEPTEMBER 10AM-12PM
AND 2-4PM**

All open day events will be held at the Hub on Rye Hill, Kiln Drive, Rye Foreign

DON'T MISS OUT!

THIS EVENT IS OPEN TO ALL!

There is no charge but it would be helpful if you could let us know you are coming. There will be tea, coffee and cakes on Friday afternoon and on Saturday as well as light refreshments there will be activities for children. A fascinating exhibition about the Hospital can be seen on both days plus a film showcasing the role that the hospital plays today. Come and join the fun!

For more details or to become a Friend, please visit www.ryehospital.org.uk or contact fundraising@ryehospital.org.uk or call 01797 223810.

Alternatively, pop into the Hub and speak to one of our friendly Hub Coordinators about these events.





Rye Food Bank

Cam will continue to pick-up doorstep donations on the third Tuesday of every month and any donations that may have been placed in the crate at St Thomas'.

The next collection date is Tuesday 17th August. If you would like to donate food items the Rye Foodbank, please give him a ring, so he can co-ordinate a pick-up from your front door. Thank you!

Donald Cameron-Clarke 01797 226414



Please send copy for the September Magazine to
ryeview@gmail.com
on or before Tuesday 31st August

For Winchelsea Beach information go to
winchelseabeachcommunityassociation.co.uk

For Winchelsea information go to
winchelsea.com

For more information about the Church go to
winchelsea-icklesham-churches.org.uk

For weekly news from the local area go to
ryenews.org.uk

Winchelsea Church and Town Diary

August 2021

Sunday 1st **9.30am: Parish Eucharist at Icklesham**
Trinity 9 **11am: Parish Eucharist at St Thomas'**

Thursday 5th Churchyard Working Party
 Friday 6th Funeral of Sue Chetwood at St Thomas'
 Saturday 7th Church Market

Sunday 8th **9.30am: Parish Eucharist at Icklesham**
Trinity 10 **11am: Parish Eucharist at St Thomas'**

Saturday 14th Winchelsea Town Fete
 Concert at St Thomas'

Sunday 15th **9.30am: Parish Eucharist at Icklesham**
Trinity 11 **11am: Parish Eucharist at St Thomas'**

Saturday 21st Little Shop Association AGM (New Hall)

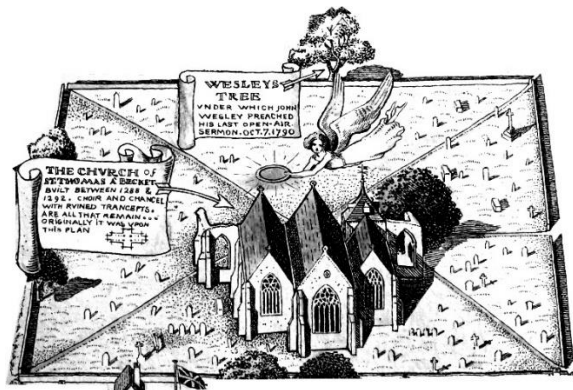
Sunday 22nd **9.30am: Parish Eucharist at Icklesham**
Trinity 12 **11am: Parish Eucharist at St Thomas'**

Saturday 28th Town Reception (New Hall)

Sunday 29th **11am: Joint Benefice Eucharist at St Thomas'**
Trinity 13 *no service at Icklesham*
 Rescue Boat Open Day

Monday 30th Steve Turner Celebration Cricket Match
 Sat 4th Sept Church Market
 Sailability Opera Evening (New Hall)

Sun 5th Sept **9.30am: Parish Eucharist at Icklesham**
Trinity 14 **11am: Parish Eucharist at St Thomas'**



Rector of Winchelsea and Icklesham

The Revd Jonathan Meyer

The Rectory, St Thomas Street, Winchelsea TN36 4EB

01797 226254 revdjonathan@btinternet.com

The Rector's day off is Monday

Churchwardens

Charlotte Beecroft

Burrin House, North St TN36 4HX

01797 223159 ccmburrin@gmail.com

Celia King

Stargazer, Morlais Place TN36 4LG

01797 227858 sake.king@hotmail.com

PCC Secretary

Angela Hill

Friars Halt, Friars Road TN36 4ED

01797 226325 angelam.hill@btinternet.com

Parish Treasurer

Vacancy

Gift Aid

David Jefferies

Wee Five, Sea Road TN36 4LH

01797 222904 pamela.jefferies@sky.com

Electoral Roll Officer

Vacancy

Organist

David Birchenough

07840 595338 daviddaorganist@icloud.com

St Thomas' Choir

Marion Lovell

7 Oast House Field, Icklesham TN36 4BP

01424 815247 marion@abingworth.plus.com

St Thomas' Primary School

Headteacher Carol Gardiner

Friars Road TN36 4ED

01797 226479

office@st-thomas-winchelsea.e-sussex.sch.uk

St Richard's Chapel Warden

Mary Parker

Solstice, Sea Road TN36 4LH

01797 229798 maryalan.parker@btinternet.com

St Richard's Secretary

Pamela Jefferies 01797 222904

St Richard's Treasurer

David Jefferies 01797 222904

Friends of Winchelsea Church

Chairman Ben Chishick

Tower Cottage, Barrack Square TN36 4EA

01797 226653 towercottage@btinternet.com

Treasurer Stephen King

Stargazer, Morlais Place TN36 4LG

01797 227858 stephenking408@btinternet.com

Parish Magazine

Editor David Page

Rye View, The Strand TN36 4JY

01797 226524 ryeview@gmail.com

