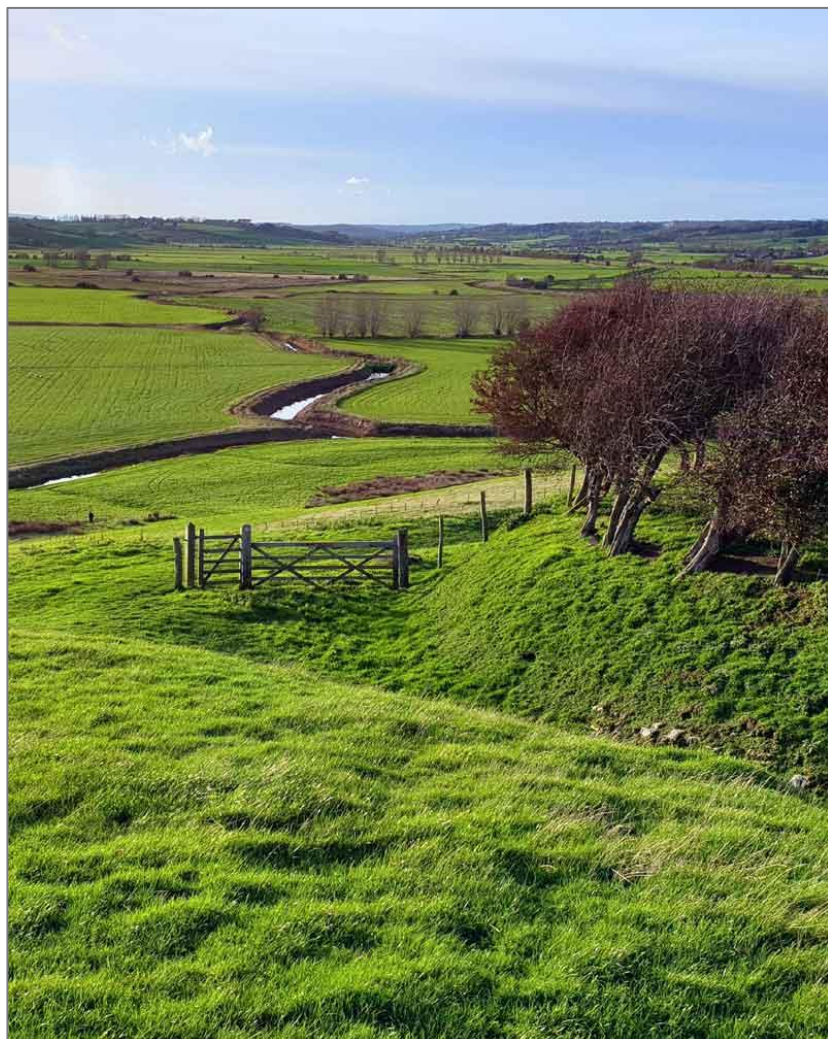


# WINCHELSEA PARISH MAGAZINE

2nd December 2020



## Into Tier Two

### Sunday Services at St Thomas'

11am Eucharists resume this month on the same basis as before November lockdown, with distanced seating and a requirement to wear masks. The Advent Sunday service on 29th November was streamed and can be accessed here: [youtu.be/DNo\\_oW1t6o](https://youtu.be/DNo_oW1t6o)



St Thomas' - November Morning *Jonathan Murphy*

### Christmas Services

There will be a Carol Service, a Midnight Eucharist, and a Eucharist on Christmas morning. Numbers will be limited and advance registration will be required. See further down for details.

### Winchelsea New Hall

Activities can now resume on the same basis as in October. Phone 07379 537304 or 07941 458628 for details. See further down for WBCA information.

### Court Hall Post Office

Open again on Mondays and Thursdays, 9.30 to 11.30.

### Magazine Christmas Extra

A brief extra edition of the magazine will be emailed to you mid-month. This will include any last-minute information and updates.



## **Christmas Promenade?**

How shall we wish each other a Happy Christmas?  
Just a thought, but I wonder whether we might do it  
with a Christmas Promenade?

If we made a point of going out for a stroll - say between  
10 and 11am on Christmas morning - we'd be able to see  
each other and, at a safe distance, greet each other.

A circuit of Castle Street, St Thomas' Street, Rookery  
Lane and Barrack Square would give us lots of space to  
do this safely.

Please let me have your feedback on this. If enough  
people give a positive response, I'll confirm it in the  
'Christmas Extra' issue of the Magazine that will go out  
in mid December. Snow is not guaranteed.

*David Page*   [david@ryeview.net](mailto:david@ryeview.net)

---

## Lighting up Winchelsea

In last month's magazine we asked residents to support our appeal for funds to light the church windows as part of the Advent Window Trail. The response was amazing, it took just two weeks to reach our target and we would like to thank all the residents and local tradespeople who contributed so generously.

Lighting the windows from the inside has provided us with some technical challenges. But over a series of trials these have been overcome, thanks to our wonderful team of technicians and our lighting consultant - and new Winchelsea resident - Graham Large.

We have some beautiful stained-glass windows whose luminous intensity became really self-evident during the trial lighting. It's going to be a real treat to see them all lit in such a way together. This picture was taken during the test run in November.



Although the church windows are the centrepiece of our trail there is a lot more to see with over sixty households creating a window or display.

There is no particular theme except "Christmas" and there promises to be plenty of variety in style, size, colour and lighting.

## **The church windows will be lit from Sunday 6th**

and from that date onwards other windows will be gradually lit, until the whole trail will be complete on the 20th and continue through to New Year's Eve. The lights should be shining brightly from 5pm to around 10pm.

**Trail maps are available** from Winchelsea Farm Kitchen, The New Inn and from the Church porch. Houses are numbered and each window named, so you can either follow the numbers or walk around Winchelsea at your leisure. Don't forget to bring a torch. Please stop and enjoy everyone's handiwork, as a lot of effort has gone into this event to make it special and to lift the spirits.

To comply with Government guidelines, we do ask you to make sure that you walk in family groups and ensure that social distancing is followed at all times. Do not enter into people's gardens unless instructed to do so and make sure you stay safe by looking out for uneven pathways and roads and making sure that all children are accompanied at all times.

**Our charity this year is St Thomas' Church**, so if you enjoyed this year's trail please make a donation, using our *Just Giving* site. All monies raised go directly to the church and there is opportunity to add Gift Aid if eligible.

You will find a QR code around town and the URL is: [justgiving.com/fundraising/winchelsea-windows](https://justgiving.com/fundraising/winchelsea-windows)

**Don't forget to support the New Inn**, perhaps by starting or finishing with a meal. Please make sure you book ahead to avoid disappointment. While in the Farm Kitchen you will also find a range of Christmas gifts and cards created by our talented team of crafters to raise further funds towards the event.

Thank you for your support - and we wish everyone a very Happy Christmas. *The Winchelsea Christmas Windows Group*

---



## Reflections from the Rectory

As I write this I have just updated my new diary, which arrived the other day. I will have begun using it on 29th November. And it will take me through until the end of November 2021.

It is not always appreciated that the church year begins on Advent Sunday. Traditionally Advent is a time of waiting, fasting and reflection in preparation for the coming of the light in Christ Jesus at Christmas.

It is that low point of the year when darkness falls soon after 4 o'clock in the afternoon. Many of our Advent hymns remind us of this time of waiting. My favourite is *O come, O come Emmanuel* - the third verse reminds us of the coming of the light -

*Oh come, thou dayspring, come and cheer  
our spirits by thine Advent here;  
disperse the gloomy clouds of night,  
and death's dark shadows put to flight*

Another of our well beloved Advent Carols begins -

*The people that darkness sat,  
A glorious light have seen.*

We've heard quite a lot about light recently. While I wouldn't want to be partisan it is significant that Joe Biden spoke of being on the side of the light. And in truth we know that there is light on both sides of political divides although the extremists choose not to see it.

It is no coincidence that the well-known Advent collect prays,

*Almighty God, give us grace that we may cast away the works of darkness, and put upon us the armour of light, now in the time of this mortal life.*

It has been a dark year and no doubt not all our problems will be resolved easily. But as Christians we look forward in hope especially at this time of year. As we wait quietly in the dark for the coming of the Lord we hope and pray for the coming of the light.

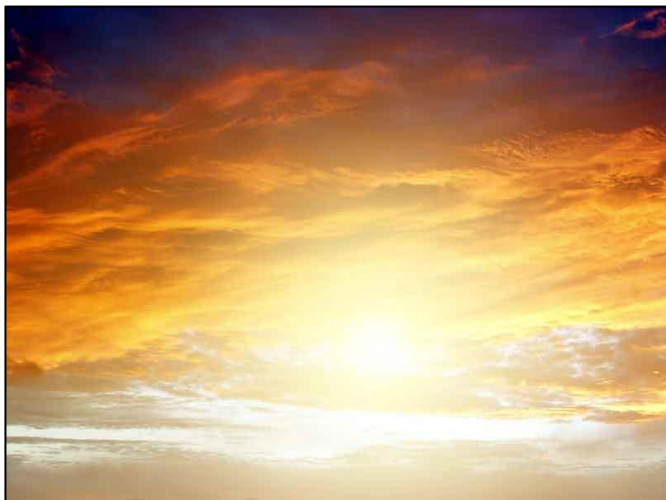
Light is important to all our community and we pray that the light will shine out from our churches. In Winchelsea this year a special effort is being made to illuminate Christmas windows. Over seventy people have agreed to put on some sort of display.

Thanks to the efforts of the newly invigorated Christmas windows committee money has been raised to light the church from within so that in the dark evenings light shine out through the stained-glass to remind us of our Advent hope.

This year we may not be able to celebrate Christmas in quite the way we expect but we need to remember that just because things been hard the light is still with us and the light is still coming into the world.

*Jonathan Meyer*

---



## **Church Services in December**

Services are still subject to changes and disruptions because of the Covid crisis but the expectation is that there will be an 11am Parish Eucharist at St Thomas' on Sunday 6th December and Sunday, 13th December with said services on 20th and 27th.

The Carol service will take place at 6pm on Sunday 20th December, but you will need to register in advance and maintain social distancing.

There will not be a Crib Service at St Thomas' this year as it has proved impossible to organise it safely but there will be one at Icklesham.

Midnight Mass at 11.30pm on Christmas Eve and the Family Parish Eucharist at 11am on Christmas Day will take place but you will need to register in advance and attendance cannot be guaranteed.

---



2020 Church Christmas Card design by Shirley Meyer

## **Christmas Services at St Thomas'**

**Sunday 20th December at 6pm**

**Service of Lessons and Carols**

Unfortunately the congregation will not be permitted to sing but the choir and some soloists will sing. Advance registration is necessary.

**Christmas Eve at 11.30pm**

**Midnight Mass**

A small group will sing carols.  
Advance registration is necessary.

**Christmas Day at 11am**

**Parish Communion**

A small group will sing carols.  
Advance registration is necessary.

## **Registration for Christmas Services**

As our numbers are limited in church so that we can observe social distancing, it will be necessary to inform the rector that you intend to attend.

Please email or telephone the rector (you may need to leave a message) giving details of the services you hope to attend and how many people there are in your group or “bubble”.

[revdjonathan@btinternet.com](mailto:revdjonathan@btinternet.com) 01797 226254

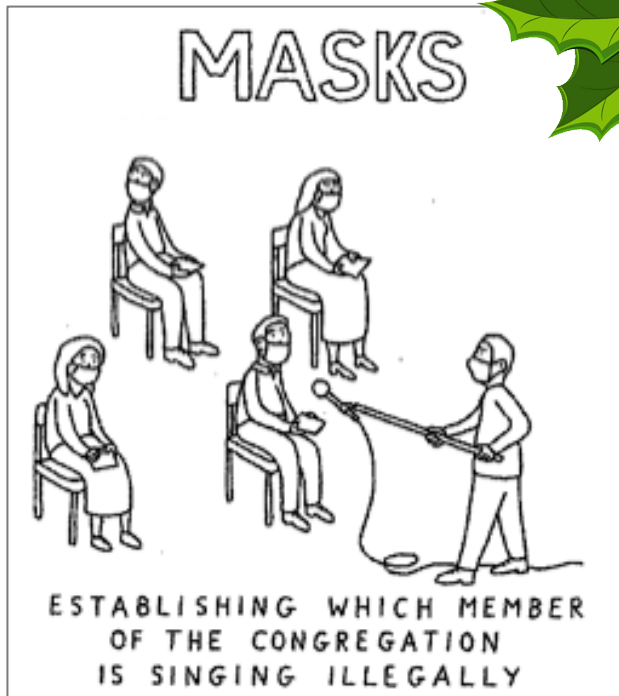
We will endeavour to accommodate as many as possible but we cannot guarantee that there will be space for everyone. Please do not just turn up as we may not be able to admit you.

**Christmas Eve at 4pm**  
**Crib Service at Icklesham only**

Please let the churchwarden, Careena Prince, or the rector know if you hoping to attend as numbers may need to be limited.

[careenaprince444@btinternet.com](mailto:careenaprince444@btinternet.com)

01424 813289





## Carols Round the Town

Carol singing around the town will take place this year but, as you would expect, it will be a little different from past years.

Due to current restrictions the singers will be limited to six people who have volunteered to sing on two evenings, Sunday 13th December and Monday 21st December, from 6 to about 7.30pm.

The first session will be on the same evening as the lighting up of several more Christmas windows, though a little later, and we hope it will contribute to the sense of occasion in the town.

It is unfortunate that the usual arrangement, of singers just turning up and singing is not possible, but with six we can at least ensure safe social distancing. Please listen out for us. Of course, this plan is subject to any changes in regulations that may prevail at the time.

All the proceeds will go to *Shelter* as usual, which like most charities, will have suffered from the impact of the pandemic. We in Winchelsea are fortunate in so many ways even in these strange and difficult times, and we hope that this will be reflected in donations.

*Carol Scoines 01797 222772*

[Click here to donate to Shelter](#)



## **New Inn tier two plans**

We shall be reopening on 2nd December at midday and closing at 10pm. Food will be served from 12 to 2.30pm and 5.30 to 8.30pm Monday to Thursday.

On Friday and Saturday hours will be 12 to 3pm then 5.30 to 9pm. Sunday will be 12 to 7pm with food served from 12 to 6pm.

Due to current restrictions we are only allowed one household per table, and we can only serve alcohol with a 'substantial meal'. Otherwise customers can only have a soft drink - tea, coffee, etc.

As we're not exactly sure how this will affect us as a business and our opening times will be subject to change.

On the plus side, we shall carry on doing takeaway food as we have done through the lockdown, and will soon be offering a pizza takeaway/delivery service also - details to be advertised a.s.a.p. Check [www.winchelsea.com](http://www.winchelsea.com) for menus and updates.

We would like to wish everyone a very merry Christmas albeit a very different one.

Kind regards, Paul & Debbie. 01797 226252



## **Hastings Philharmonic Orchestra**

This Winchelsea Arts concert, postponed from last month, will now take place at St Thomas' on Saturday 12th December at 5.30pm.

Conducted by Marcio da Silva, the orchestra will perform four string pieces:

Sibelius - Romance in C major

Elgar - Serenade for String Orchestra

Nielsen - Bohemian-Danish Folk Tune

Tchaikovsky - Serenade for String Orchestra

We hope to be able to go ahead with two more concerts in the Spring.

### **Saturday 20th March**

The Tara Minton Quintet present their new album, *Please Do Not Ignore The Mermaid*.

### **Saturday 15th May**

Soloists from the Junior Department of the Royal College of Music.

[www.winchelsea-arts.org.uk](http://www.winchelsea-arts.org.uk)


---

## Grand Christmas Raffle

You still have the chance to buy tickets until lunchtime on Monday 7th December, in aid of the New Hall and Rye Food Bank. Tickets cost £1 from Winchelsea Farm Kitchen or phone Hilary Roome 01797 227690.

Over 30 fabulous prizes to choose from.

See [winchelsea.com/christmasraffle2020](http://winchelsea.com/christmasraffle2020) for details.



### GRAND CHRISTMAS RAFFLE

Winners choose from over  
**30 EXCITING PRIZES**

**£100 Cash**

**Land Rover Tour of Rye**

**Harbour Nature Reserve**

**Nordic Designer Double Quilt**

**Massage at Rye Retreat**

**Shirley Meyer Mounted Linocut Print**

**Winchelsea Farm Kitchen Hamper**

**Cheryl Fraser-Sampson Pet Portrait**

**Linda Gilfrin Jewellery**

**Charles Palmer Wine Tasting**

**...and many more!**

**PLUS VOUCHERS including:**

**Rye Chocolates, Ethel Loves Me**

**Red Van Fish & Chips for 4**

**Garden Gems Garden Centre**

**Café des Fleurs flowers,**

**In Aid Of Winchelsea New Hall  
& Rye Food Bank**

**Tickets £1 each from  
Winchelsea Farm Kitchen**

**or 01797 227690**

**Draw date 8 Dec**

*Reg charity no 235174. View all donated prizes at  
[www.winchelsea.com/christmasraffle2020](http://www.winchelsea.com/christmasraffle2020)*



## **Winchelsea Beach Community Hall**

The Hall is still closed except for some limited permitted activities. December events - the Christmas meal, Carols Round the Tree and the Children's Party - have all been cancelled.

We thank Rye Mutual Aid, local business and the NHS for their help this year and wish them and Winchelsea Beach Residents a Happy Christmas and a hopeful and healthy New Year.

For more information contact chairman, Geoff Foot,  
07802 322315.

[www.winchelseabeachcommunityassociation.co.uk](http://www.winchelseabeachcommunityassociation.co.uk)

---



## Remembrance and Poppy Appeal

This year's Appeal raised a total of £2,260.18. There is no doubt that the Royal British Legion will be very grateful for this support from the people of Winchelsea and Winchelsea Beach.

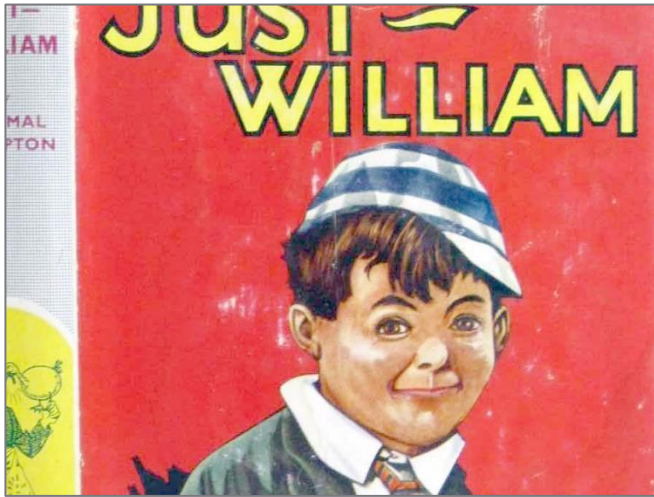
This sum is a little over £480 less than was raised last year, but given the unusual circumstances and the things we were not allowed to do, like door-to-door collections and the church service, this must be seen as a very good result.

Thanks go to all those who contributed and particularly to all the commercial outlets that hosted a collection box and sold poppies.

It was also pleasing that so many people were able to attend the ceremonies at the War Memorial on Remembrance Sunday and Armistice Day, led so well by the Mayor and Rector. They must have got the balance right as no arrests were made.

*John Rodley*

---



## **Literary Society**

On Friday 11th December, Howard Norton introduces extracts from his favourite books 'With Great Pleasure'. 7pm for 7.30.

A Zoom link will be sent to members before the meeting. If you aren't on the regular list but would like to be added, please email [WinLitSoc@gmail.com](mailto:WinLitSoc@gmail.com)

---



## Who do you think...?

Second Wednesday were to have had a musical event in December however the person we had booked said his show doesn't work on Zoom, so I had another look around, and

I am delighted to announce that on 9th December at 2.30pm we will have Dr Nick Barratt giving us a Zoom talk entitled *Family History and the Media: Behind the Scenes of Who Do You Think You Are?*

Nick is a genealogist and consultant to the TV programme - if you haven't ever watched it, have a look on iPlayer - there are four episodes available at the moment. Nick is also an author, broadcaster and historian and Director of Senate House Library in London.

As usual everyone is welcome, regardless of whether you are a paid up member. I will send you the Zoom invitation nearer the time. Please let me know if anyone not normally on our mailing list would like an invitation.

Hilary Roome    [2ndWeds@gmail.com](mailto:2ndWeds@gmail.com)

---



## **Wine Society**

Following the article in the *October Magazine* a good group of residents expressed an interest, at least in principle, and this number is increasing gradually thanks to informal contacts around the town. When it becomes possible, we hope to hold a meeting to take things further.

If you haven't already, please let Brian Leonard know if you are interested. There are, of course, no commitments needed at this stage.

Email [brianleonard779@gmail.com](mailto:brianleonard779@gmail.com) or drop a note in to 2 Five Houses, North Street.

---

# Icklesham Parish Council

## Meetings in December

Monday 14th Planning Meeting by zoom. Contact the Deputy Clerk if you wish to join in the meeting.

## RADCOTT End of Season review meeting

As Chairman of the Parish Council I was invited by Rother District Council to observe this meeting via Microsoft Teams.

It was interesting to note that RADCOTT is a meeting of a wide ranging group of agencies involved in ensuring the coastal strip of Rother District is managed throughout the extended Summer Season to not only ensure the safety of the many thousands of visitors that pour into the coastal strip, but also to ensure that the local residents are not unduly inconvenienced.

You can imagine that this requires major planning, especially as it not only covers Camber and Broomhill and the rest of Rye Bay but also Bexhill through to Normans Bay.



The management scheme is responsive to weather conditions to the extent that when the weather forecast predicts hot sunny days, staffing activities are adjusted so that additional staff are available to be drafted in to

manage the influx of visitors. This last summer, the group have had to work within the extra constraints of coping with Covid 19 regulations.

Apart from Rother's Coastal Management team, the group includes Sussex Police, HM Coastguard, RNLI, Highways England, Environment Agency East Sussex Fire and Rescue, East Sussex Highways and South East Ambulance and this is not an exhaustive list.

The work RADCOTT does is so highly regarded that other Local Authorities are looking at it as a model for the way they managed their coastal strips.

### **Precept for next year**

The Parish Council has started to consider the draft budget for next year, which informs the precept for inclusion in Council Tax demands next year.

Your Councillors are trying to balance the difficult task of being able to support local residents without imposing on them financially. We are aware that the principle authorities will have to increase their budgets. The latest news suggests that ESCC will be allowed a 2% increase plus a further 3% for social care.

Our problem is that if we cut our budget too finely it has a direct impact on the services we provide to you the Council Tax Payers. Around 20% of our precept goes to maintenance of our open spaces, including grass cutting and litter and dog bin emptying. We recognise that these have been increasingly important to residents this year and would be reluctant to lower standards for next year.

The Council has not yet decided what its precept will be for next year. The indications are that there may be an increase, but I know most of my fellow Councillors share my view that anything above inflation could have a serious impact on some of the less fortunate residents.

After two hours of discussion, the meeting was adjourned so that the Officers could prepare revised figures reflecting our deliberations. We shall continue the discussion next week.

## Speed calming

Speeding, as I have mentioned before, is an issue across Rother District and Rother Association of Local Councils have launched an initiative across rural Rother in consultation with East Sussex Highways and Sussex Police. Catsfield Parish Council is the lead Parish, having already purchased an approved device to monitor traffic levels and traffic speeds.



The initial results are encouraging in the sense that the data recorded shows clearly the optimum times for Sussex Police to deploy their limited resources to catch the worst offenders.

The Parish Council already has a budget provision to obtain an identical device for use on East Sussex Highways controlled roads, which would enable us to use it in Winchelsea, Winchelsea Beach and Rye Harbour. We still have to agree with Highways England about its use on the A259 through the Parish.

The device can readily be moved to different locations once we have agreed with Highways and the Police on suitable sites.

*Cllr Peter Turner*    [www.ickleshampc.org](http://www.ickleshampc.org)

---



New Gate *Ian Rowlands*

## Corporation Charity Registration

At the end of November, the Charity Commission informed Winchelsea Corporation that its application to register as a charity had been accepted. It has been entered onto the Register of Charities as *The Corporation of Winchelsea*, with the Registered Charity Number 1192506.

The objects of the charity are:

- a. To preserve the historic traditions associated with the role of Winchelsea as an Ancient Town of the Cinque Ports Confederation.
- b. To promote the preservation and maintenance of the historic Court Hall and town gates of Winchelsea and any other land and properties thereon in its charge.
- c. To hold the Court Hall and the three town gates (New, Ferry and Strand) as designated land for the purposes of the Charity.

d. To oversee the state of the Court Hall and three town gates ensuring they are preserved for the public benefit, working with other agencies to maintain their appearance.

e. To maintain and manage a museum for the public benefit providing a record of the Town of Winchelsea and its people.

Which pretty much sums up what the Corporation has sought to do, since it lost its role in local government under the 1883 Municipal Corporations Act.

The Corporation has long been recognised to be a charity and registration completes the process of conforming it to the most up-to-date Charity legislation.

It was in March 2019 that the Corporation decided to seek registration. Throughout those twenty intervening months, considerable work has been done to ensure that the traditions of the Corporation are maintained, whilst its methods reflect what is currently expected of a charity.

That has led to much internal debate, as well as discussion with the Commission. The end result is that a Scheme (also referred to in the 1883 Act) has been agreed, which protects the history and traditions of the Corporation, while at the same time providing a contemporary rationale for its purpose, firmly anchored in the 21st century.

---



## Winchelsea Anniversaries

### 60 Years Ago

By the autumn of 1960 the painstaking work required to complete the entering of the names of Winchelsea's mayors on the walls of the Upper Court Hall had been completed. That new vastly expanded list replaced an earlier incomplete one and had been made possible by the discovery a few years earlier of a vitally important collection of Winchelsea Corporation's Hundred and Assembly Books dating from 1527 to 1734.

These volumes record the day-to-day activities of the Corporation including, of course, the appointment of the mayor and other officers. They had been taken to London in the 1760s for use in evidence at an important court case known as the Winchelsea Causes which involved disputes over who was and who was not eligible to be a freeman of the town.

After the conclusion of the case they were put away in the attic of a London solicitors and forgotten. Their re-discovery had resulted from a chance encounter involving Anthony Freeman of *Wickham Manor*, then the Corporation's leading member. Mr Freeman was told that 'a good deal of Winchelsea stuff' had been found and invited to have a look to see whether it was

worth keeping. No more important discovery has been made in the archival history of the town!

Despite the vital part he played earlier, Anthony Freeman was not involved in the Court Hall wall project and when he saw it completed he was not happy! He wrote to the mayor complaining strongly about the use of the word 'Commonwealth' above the names of the mayors from 1649 to 1660.

A man of very strong royalist views he stated categorically that the word 'Commonwealth' was the invention of the 'so-called Parliament of those days'.

He further claimed that 'after the murder of King Charles I, Parliament had no legal existence whatsoever and its title of Commonwealth is illegal and incorrect for us to use as we are a royally constituted body'.

Whatever may be thought about the justification Mr Freeman used for this objection, at the time his view prevailed. Any reader caring to take a careful look will see that a lighter patch clearly remains where the word Commonwealth was deleted and Interregnum substituted.

*Malcolm Pratt*

---

With the Museum closed, the Corporation has taken the opportunity to have the Upper Court Hall re-decorated. Part of the process has been to take down the boards that record the names of Winchelsea's mayors.

With the painting done, the boards will be re-mounted on battens so that they sit away from the wall and air can circulate around them. In a building this old, damp is a perennial problem. Even with the dehumidifier at work, there's always the risk of damage.

The Corporation is very grateful to FOAM for their contribution towards the completion of this work.

---



## **Become a member of FOAM**

The Friends of the Ancient Monuments and Museum of Winchelsea (FOAM)! A long title for a small but vital charity. Little or no funding is provided for these facilities other than that provided by Winchelsea itself through the Town Corporation.

The Medieval Court Hall and the Gates cost significant amounts to repair or maintain as does the Museum. FOAM exists to raise money for this. This involves the volunteer led Cellar Tours which are very popular, with bookings being received from around the country.

In addition there are interesting talks, a quiz, events at the Fete including bric-a-brac sales etc., and sponsored walks, all to both raise funds and to widen the knowledge of everyone on Winchelsea and its history.

Due to the virus our events have had to be temporarily curtailed and we are therefore largely dependent on members fees to provide assistance.

We would therefore ask anyone who is not yet a member to join and help. Forms can be obtained either by email via [info@winchelsea-foam.org.uk](mailto:info@winchelsea-foam.org.uk) or from Stuart Raine on 01797 222772. Additional donations are always of course welcome, and thank you.

*Stuart Raine Chairman.*



Winchelsea Beacon *Jane Archutowska*



## The Beadles of Winchelsea

The Winchelsea Poor Law records have been edited for publication by Malcolm Pratt and appear as volume 94 of the Sussex Record Society series. This book includes relatively few of the overseers' vouchers surviving for Winchelsea – there are hundreds – but nonetheless contains riches for the project. It provides lots of evidence about men who took a parish salary to help implement the poor law.

Parish beadles have a reputation for having been hard-hearted and officious, for which Dickens' Mr Bumble is somewhat to blame. The word 'Bumbledom' was widely used in the second half of the nineteenth century to characterise pomposity and rigidity in public office.

Harry Secombe's performance in the musical *Oliver!* in 1968 has cemented this popular view and it has to be said, whatever his behaviour in the role, his costume was fairly faithful to beadles' uniforms of the period.

But the Winchelsea beadles employed in the 1820s do not fit this stereotype at all. Instead, they were paupers themselves. John Chester was removed to Winchelsea under the provisions of settlement law in 1822 and was resident in the workhouse during the following year.

He went on to serve as parish beadle 1824-6 for four shillings per week paid out of the poor rates, until his neglect of duty proved a nuisance to Magistrate Henry Powell.

Chester's successor may have been better at the job, but endured a similar lifestyle. The tasks of beadle were taken up by Henry Tilden, which in 1826 included delivering notices to quit rented properties.



*Winchelsea Workhouse sketched by J M W Turner ca.1816*

The Winchelsea workhouse accommodated Tilden until the time of its closure in 1831. From then onwards, the beadle's salary was agreed at six shillings per week if he would 'keep himself'. On Tilden's death in 1835 aged 77, he was buried at the parish expense.

One of the vouchers that was printed in Pratt's book offers an additional touching sidelight on the inclusion of Tilden among the parish poor. He was listed in a bill of 1830 as one of the men benefiting from the services of George Haisell, hairdresser, paid for shaving the adult male paupers and cutting the hair of the children.

*Alannah Tomkins*

Sources: M. Pratt (ed.), *Winchelsea Poor Law Records 1790-1841* (Sussex Record Society, 2011).

---



## Nine times round a cabbage

Some old Sussex expressions that might come in handy.

All mops and brooms *In a muddle*

Bad abed and worse up *Unwell*

Brass love and copper compliments  
*Not to be believed*

Can't whistle and eat flour

*Can't do the impossible*

Very countable *Tight-fisted*

Eat enough to sink a barge and drink enough  
to float it again

Jump and hang by nothing

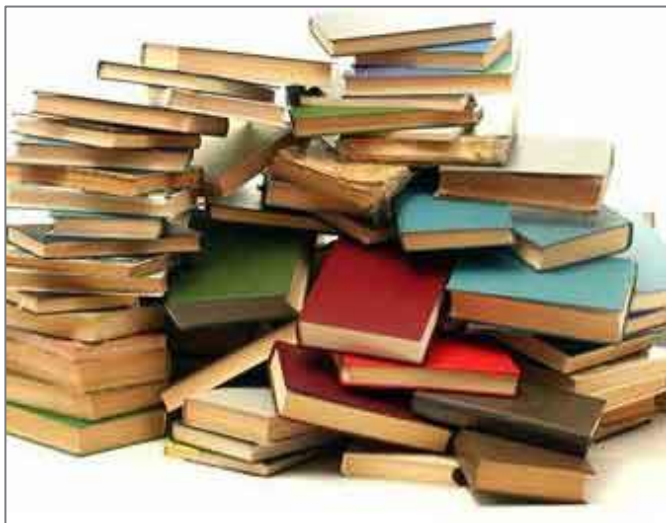
*In too much of a hurry*

Nine times round a cabbage

*A long time getting to the point*

from *Sussex As She Wus Spoke* by Tony Wales, one of the books donated by Anne Haddock as she moves to be near her family in Eltham. A great collection of Anne and John's books on art and design will be on the church bookstall when we open again.

---



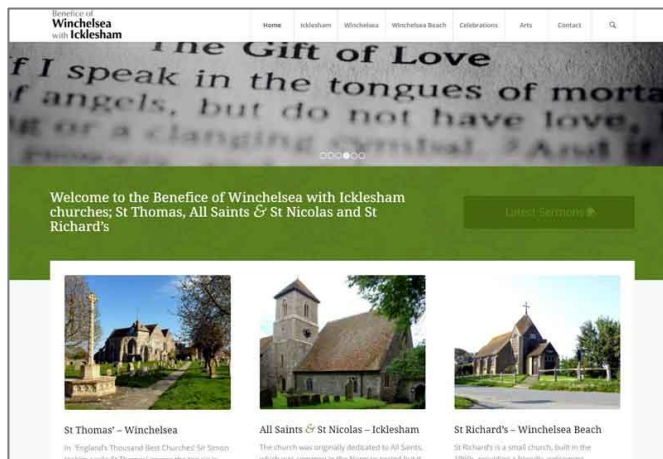
## **Church Bookstall**

We haven't been able to hold church markets and the bookstall at St Thomas's has also been out of operation.

We are really grateful to all the people who have continued to offer books for sale - the money they raise really does help - but until the bookstall is open again we can't accommodate any more.

So if you have hardback non-fiction books in good condition please hold on to them if possible - we'd love to have them eventually. In the meantime, please resist the temptation to pop them in to the box pew. There are too many there already!

---



## Parish Website

If you have tried accessing the Church website recently you will realise that it has more or less seized up.

Calling on the technical and design expertise of Felix Lozano a new site is in development and should be up and running before too long.

The old site covered Winchelsea and Winchelsea Beach. The new one will include Icklesham church as well, and so will have a new address.

---

## Church Christmas Cards

Still a few packs left at £5 for 10 cards. 6" x 6". Available from Deborah Rodley 01797 223458.





## Year's end at Pett Level Rescue

Welcome to the latest update from Pett Level Independent Rescue Boat, and the final one until next year. And what a year 2020's been for everyone! So, what's been happening since last time, and what's on the calendar to take us into 2021?

- Our volunteers adapted to the additional recent restrictions and maintained our rescue-ready on-call service throughout the latest lockdown.
- Nominations are open in Ecclesiastical Insurance's '12 Days of Giving' donation draw and our charity is eligible. Nominations can be made using our charity number 286891 at [movementforgood.com/12days](https://movementforgood.com/12days)

Nominations - which could bring £1,000 to winning charities - are allowed right up until 21st December. As it's been a hard year for all charities, this is a great chance for our friends and supporters in Winchelsea Parish to support local charities with nominations, so please do nominate your favourite local charities.

- Friend of the PLIRB, ceramic artist Marian Mason of Winchelsea Beach, plans to hold her annual Christmas Open Studio event on Sunday 6th December. As with her summer fundraiser, the plan is to hold a socially distanced event, to raise money for St. Michael's Hospice and Pett Level Independent Rescue Boat.

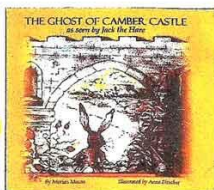
OCEAN CERAMICS CHRISTMAS SALE

SUNDAY 6TH DECEMBER 11AM - 4PM

7 Windmill Way, Winchelsea Beach, TN36 4LF

MASKS AND SOCIAL DISTANCING

Lots of useful and unique pottery - ideal Christmas presents.



Festive refreshments and a warm welcome in my studio.

In aid of St Michael's Hospice and the Pett Level Rescue Boat



wishing you a Merry Christmas and a Happy New Year, Marian Mason

- Our charity calendars for 2021 have now been printed (thanks to sponsors Static Trader of Rye Harbour). These, and our charity greetings cards are available to buy at Marian's Open Studio event and direct from us - just contact us through social media.

If the boathouse is part of your exercise route on Sundays, it may be possible to collect from there (in compliance with restrictions, of course)!

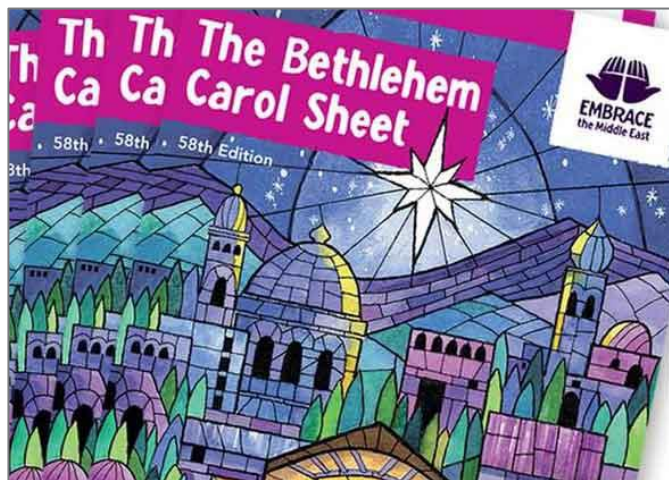
- Progress continues on our 'new-to-us' Reserve Launch and Recovery Vehicle. The November lockdown meant more delays, but we're now closer to having a beach-ready vehicle. Fingers crossed for a big reveal in the new year!
- Barbara's Charity Shed is now closed for the end of season. Although lockdowns and restrictions have had a huge impact on fundraising from the stall, Barbara's continued efforts have been amazing and we're very grateful for everything she has been able to achieve in this very difficult year.

And what's to come? Like our friends across the parish, we're hoping that the talk of a vaccine by 2021 means that we'll be able to start putting community events, fundraisers and beach safety awareness talks and activities back onto the calendar at last, including our Open Day and that long-awaited 50th Anniversary celebration (yes, it'll be 51st by the time it takes place)!

Please visit our website at <https://plirb.com> or our social media: Twitter @PLIRBRescue; Facebook @PettLevelRescueBoat and Instagram @pettlevelindyrescueboat to stay informed of plans and event dates.

For now though, all the volunteers here at Pett Level Independent Rescue Boat would like to say a massive thank you for the continued support we've received from the Winchelsea Parish communities in 2020 - it really is appreciated. We'd also like to wish everyone a very Merry Christmas and a happy - and much healthier - New Year. We'll be back in 2021 but until then, as ever, take care and stay beach aware.

---



## Bethlehem Greetings

*Marion Lovell writes:* Instead of giving cards, may I offer good wishes for a Happy Christmas to all friends in Winchelsea. I hope that the New Year will bring good health and the opportunity to meet again as we would wish. Stay safe and well.

Instead of the cards, I will make a donation to *Embrace the Middle East*, which works with refugees and blind children in Lebanon. The organisation produces the Bethlehem Carol Sheets too.

[embraceme.org](http://embraceme.org)

---



## **Rye & District National Trust Association**

Despite all, our committee is still going strong and continuing to meet as regularly as usual, albeit via Zoom Meetings. We have already booked monthly Zoom talks through to the Spring, have walks ready for after the current lockdown, plus other events planned for a hopefully more socially relaxed 2021.

Our next Zoom talk is on Thursday 10th December at 2pm: '*Not Just Santa*', by Andrew Ashton. He is a well known speaker to our group, and will be telling us about St Nicholas and the legends around him - his amazing miracles - and how he became a symbol of Christmas.

As we are unable this year to have our usual Christmas party the committee invites you to wear your Christmas jumpers, hats and have a glass of mulled wine and a mince pie to hand. Then at the end of the talk we can each raise a glass and enjoy singing together "We Wish You a Merry Christmas". We hope you will all join in!

For more information, *please email* Membership Secretary, Dee Williams. I wish you all a very Happy Christmas - and pray we all have a much, much better 2021. *John Wright*

---



## Support Rye Food Bank

Food Banks everywhere are experiencing a surge in demand. Your donation can make a big difference.

Details for donation by direct transfer are  
'Bexhill Food Bank, Rye Branch'  
Barclay's 20-54-25 a/c 83501116.

Cheques can be made out to  
'Bexhill Food Bank (Rye Branch)' and sent to  
C. Emson, 24 North Salts, Rye, TN31 7NU.

[www.trusselltrust.org](http://www.trusselltrust.org)

---

## Thank you

A big thank-you to all the kind people who bought fruit preserves from me last month. Your generosity made it possible for me to dispatch a donation of £60 to Rye Food Bank - not a bad result from a few bags of surplus fruit. *Anne Simpson*

---

# Winchelsea Church and Town Diary

## December 2020

**Sunday 6th**    **11am: Parish Eucharist at St Thomas'**  
*Advent 2*    'Light Up Winchelsea' begins

Tuesday 8th    Grand Raffle draw  
Wednesday 9th    Second Wednesday Zoom meeting  
Friday 11th    Literary Society Zoom meeting  
Saturday 12th    Winchelsea Arts Concert

**Sunday 13th**    **11am: Parish Eucharist at St Thomas'**  
*Advent 3*    Carols Round the Town 1

**Sunday 20th**    **11am: Said Eucharist at St Thomas'**  
*Advent 4*    **6pm: Lessons and Carols at St Thomas' \***

Monday 21st    Carols Round the Town 2

**Christmas Eve**    **4pm: Crib Service at Icklesham \***  
                         **11.30pm: Midnight Mass at St Thomas' \***  
**Christmas Day**    **11am: Parish Eucharist at St Thomas' \***

**Sunday 27th**    **11am: Said Eucharist at St Thomas'**  
*Christmas 1*

New Year's Eve    Last night of 'Light Up Winchelsea'

**Sun 3rd Jan**    **11am: Parish Eucharist at St Thomas'**  
*Epiphany*

*\* Advance booking required*



---

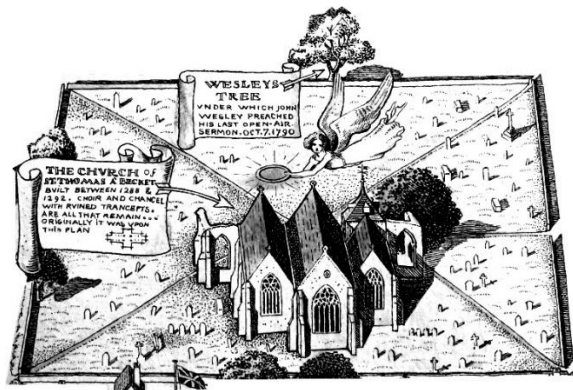
Please send copy for the January Magazine to  
[david@ryeview.net](mailto:david@ryeview.net)  
on or before Thursday 31st December

---

**For Winchelsea Beach information go to**  
[www.winchelseabeachcommunityassociation.co.uk](http://www.winchelseabeachcommunityassociation.co.uk)

**For Winchelsea information go to**  
[www.winchelsea.com](http://www.winchelsea.com)

**For weekly news about the local area go to**  
[www.ryenews.org.uk](http://www.ryenews.org.uk)



## **Rector of Winchelsea and Icklesham**

The Revd Jonathan Meyer

The Rectory, St Thomas Street, Winchelsea TN36 4EB

01797 226254 [revdjonathan@btinternet.com](mailto:revdjonathan@btinternet.com)

The Rector's day off is Monday

## **Churchwardens**

Charlotte Beecroft

Burrin House, North St TN36 4HX

01797 223159 [ccmburrin@gmail.com](mailto:ccmburrin@gmail.com)

Celia King

Stargazer, Morlais Place TN36 4LG

01797 227858 [sake.king@hotmail.com](mailto:sake.king@hotmail.com)

## **PCC Secretary**

Angela Hill

Friars Halt, Friars Road TN36 4ED

01797 226325 [angelam.hill@btinternet.com](mailto:angelam.hill@btinternet.com)

## **Parish Treasurer**

Pamela Jefferies

Wee Five, Sea Road TN36 4LH

01797 222904 [pamela.jefferies@sky.com](mailto:pamela.jefferies@sky.com)

**Gift Aid** David Jefferies

## **Electoral Roll Officer**

James Payne

Evans, Rectory Lane TN36 4EY

01797 224861 [evenswinchelsea@gmail.com](mailto:evenswinchelsea@gmail.com)

## **Organist**

David Birchenough

07840 595338 [daviddaorganist@icloud.com](mailto:daviddaorganist@icloud.com)

### **St Thomas' Choir**

Marion Lovell

7 Oast House Field, Icklesham TN36 4BP

01424 815247 [marion@abingworth.plus.com](mailto:marion@abingworth.plus.com)

### **St Thomas' Primary School**

*Headteacher* Carol Gardiner

Friars Road TN36 4ED

01797 226479

[office@st-thomas-winchelsea.e-sussex.sch.uk](mailto:office@st-thomas-winchelsea.e-sussex.sch.uk)

### **St Richard's Chapel Warden**

Mary Parker

Solstice, Sea Road TN36 4LH

01797 229798 [maryalan.parker@btinternet.com](mailto:maryalan.parker@btinternet.com)

### **St Richard's Secretary**

Pamela Jefferies 01797 222904

### **St Richard's Treasurer**

David Jefferies 01797 222904

### **Friends of Winchelsea Church**

*Chairman* Ben Chishick

Tower Cottage, Barrack Square TN36 4EA

01797 226653 [towercottage@btinternet.com](mailto:towercottage@btinternet.com)

*Treasurer* Stephen King

Stargazer, Morlais Place TN36 4LG

01797 227858 [stephenking408@btinternet.com](mailto:stephenking408@btinternet.com)

### **Parish Magazine**

*Editor* David Page

Rye View, The Strand TN36 4JY

01797 226524 [david@ryeview.net](mailto:david@ryeview.net)

