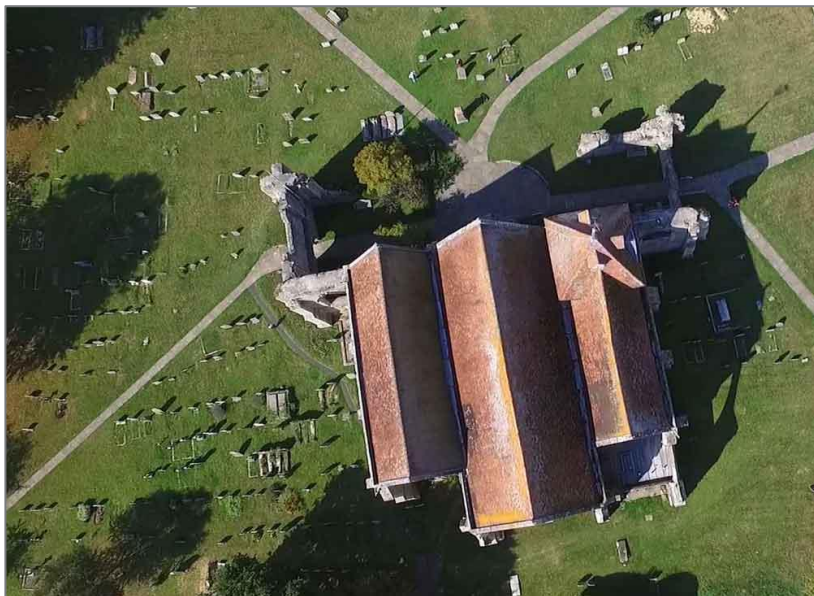


# WINCHELSEA PARISH MAGAZINE

1st October 2020



Drone view of St Thomas' Church *Phil Mack and Ian Rowlands*

## Being there

How have you been getting on with Zoom? Those who are working from home will have no problem. Families used to skyping distant relatives will have taken to it easily. Others will have tried internet video for the first time. Many will have given it a miss.

At the moment we have no choice but to embrace the opportunities it gives us if we can. What about the future? Working from home looks like being part of post-Covid life for many office workers, but is an online future a good thing for a community like ours?

It's been said of Second Wednesday that the tea afterwards is much more important than the speaker. This is not entirely a joke.

Bringing people together is a key purpose of the clubs and societies that make Winchelsea life so attractive to us - exchanging news and gossip and catching up with each other.

Eye contact, body language, a handshake or a friendly hug matter, and Zoom will never give us these. You have to be there. Personal interaction is an essential part of being human. Remote communication is no substitute and it excludes too many people.



Things may change but, for the time being, the rule of six doesn't apply in church or in community halls, so we don't have to go back into total isolation this winter. Meetings of up to 30 are possible and we have to hope that there will be more of them as we wait for the virus to abate.

And when it does, let's meet up like we used to, and with renewed enthusiasm. Our collective life and individual wellbeing depend on it.

*David Page   [david@ryeview.net](mailto:david@ryeview.net)   01797 226524*

---



## **The magazine: next steps**

The decision has been made not to return to a printed magazine but to continue into the future with the digital version. A printed monthly digest will be distributed to people who aren't online.

There won't be a subscription to pay - the digital magazine is free to anyone who wants to receive it by email or download it from the town or church website.

We will be encouraging voluntary donations, though. More news on this later. Once the new year comes we will also be contacting our advertisers to ask if they would like to advertise with us again.

---

The underlined links in the magazine are 'live' so if you click on them you should get to the website or email address.

---



## **Reflections from the Rectory**

One of the hazards of being a rector is that you are open to all number of unsolicited requests and approaches. Most of these are perfectly reasonable and indeed it is part of the role to be receptive to such contacts.

However you can imagine that sometimes they can be trivial or irrelevant, but any kind of openness brings with the possibility that random connections can be enriching. Indeed it is essential not to be cocooned and it is one of the privileges of being rector.

Only a few weeks ago I received a poem through the letterbox, written by John Parsons, a resident of Hastings who often walks in this area around our benefice church of St Nicolas and All Saints. I thanked him and asked if I could publish his reflections.

In the note he sent me he said that he normally practices writing called Haiku after the ancient Japanese form of poetry. It became popular in the West in the early 1900s and although it has developed in a slightly different way here, it is essentially the recording of thoughts in brief phrases, usually of three lines, which reflect particular images.

As its origins came from Zen it is based on contemplation of one surroundings and the distillation of thoughts and feelings into simple images, which avoid too many words. The mind needs to be stilled for us to truly see what surrounds us. So I had already learnt something.

As he told me, this little poem is not strictly in this form, and I thought it worth sharing.



### **St Nicolas and All Saints**

*And maybe some pagan clan  
appointed here at hill head's prominence,  
to strike this grove of ancient yews most  
gnarled and twisted trunks, or histories  
of use and veneration that now engulf,  
in reach, some aged head stones once,  
engraved, wrapped root and limb, deep  
into nearby last remains, each mortal  
baptised then and into wedlock here,  
since Christian reverence took in hand, this  
far more time honoured site, when later  
Normans fought a way, to come to grace,  
then build this squat wind worthy place,  
of prayer and ritual to anoint, St Nicolas  
and All Saints, church and tower,  
with gilded clock to count their hour,  
and chime above the bolted door,  
where Covid rules its hollow space  
and empty floor.*



There is a lot to think about, we are reminded of the ancient history of all our churches; that the living and the dead share their sacred spaces. We are lucky that in Winchelsea our doors remain open but Covid has certainly affected the way we worship and gather.

But as we face continued anxiety and disruption we should remember that the majesty of place remains and endures; we are already gathering for services and we will all be able to raise our voices in songs of praise when the virus has retreated.

And perhaps the best lesson lies on the flyleaf of a little book the writer sent me. *"Normally we do not as much look at things as overlook them."*

Lord help us to be mindful of the glory of our church, now and for ever.

*Jonathan Meyer*

---



## **Rosemarie Olsen**

A much-loved member of the fellowship at St Richard's Church, Rosemarie died on 3rd September.



## **Mary Hodgson**

The end of a era came for the residents of Winchelsea with the death of Mary Hodgson, known affectionately as Mary Socks, who died on 17th September at the age of 97.

She was a great story teller and would enjoy regaling friends and neighbours who visited her with stories of her life and times since coming to Winchelsea in 1945. She will be greatly missed by all who knew her.

---



## **New Hall still open for business!**

Despite the changing rules and often confusing messages from central government the New Hall management committee have been keeping a close eye on the COVID regulations and the recent updates.

Although the “Rule of Six” means we cannot socialise with more than this number, groups such as clubs and societies can currently hold meetings or events in places deemed “COVID-19 secure” with as many people as can safely be accommodated, allowing for social distancing and other hygiene measures.

The committee has carried out a Risk Assessment; there are distance markings externally, a one-way system in and out, and hand sanitiser and cleaning supplies are provided. The hall is therefore COVID-19 compliant and legally able to accept bookings.

Hirers do have to disinfect before and after hire but this is usually quite quick using the materials provided and not too onerous!

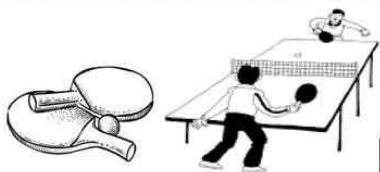
We have set the maximum number at 30 people for most activities to ensure social distancing although larger groups could be accommodated if seating is appropriately spaced and forward facing, and face coverings are used.



We have been pleased to welcome a number of activities this month including dance lessons, badminton, table-tennis and reading group.

For enquiries please phone 07379 537304  
or 07941 458628

**In need of exercise and some fun?**  
**The New Hall is open for Pop-Up  
Table Tennis or Badminton.**



**£2 per person per one-hour session**

*Equipment is available but please bring your own rackets  
or bats if you have them.*

**Hand sanitiser and disinfectant provided.**



*All hirers must comply with a number of new  
COVID-related conditions of hire.*

For enquiries and bookings phone or text 07941 458628

A lively AGM of the New Hall was held via Zoom on Saturday 26th September. Peter Cosstick has stepped down from the committee after valiant service and two new nominations to join the committee were welcomed, they are John Davidson and Laurie Rutman.

The accounts and Trustees Annual Report are available to view online.

Robert Holland presented his chairman's report which drew on the February dramatisation of the shaky beginning and later saving of the New Hall from structural collapse, the theme being community effort to overcome adversity.



Rosemarie Roberts presented the Treasurer's Report: it may surprise you to learn that the finances are unusually strong. This is due to Rosemarie's success in attracting a business support grant and a business rates holiday from the local authority.

While September is usually the time for the New Hall to be planning the next phase of improvements to the fabric, this year our ambitions are quite modest while we await the return of social events.

The window replacements are days away from completion after the painter has applied the last coat of paint. We postponed some exterior improvements to the hardstanding at the entrance in the Spring, this will now go ahead this autumn.

We also put off interior re-decoration to conserve our finances, but this is planned for this winter.

The support of Winchelsea residents has always been our most valuable asset. Thank you one and all.

---



## **Winchelsea Beach Community Association**

Our hall is open for bookings. Ring 07802 322315.

The Baby Sensory Class on a Tuesday mornings is now operating again. Ring Becky - 07968 776195.

*Jill Bruce*

[www.winchelseabeachcommunityassociation.co.uk](http://www.winchelseabeachcommunityassociation.co.uk)



## **Rotary Community Walk**

Thank you all those who were part of team Winchelsea on the Rotary Community Walk on Sunday 6th September.

Sponsorship raised over £500 for the Friends of the Ancient Monuments. Over 60 walkers made the effort in total with 17 from Winchelsea. A great effort and many thanks for both the walkers and organisers.

Rotary apologises for the cancellation of its Cycle Ride event on 27th September, but new Covid regulations made this inevitable.

*Stuart Raine* (in heavy disguise)

---



## Garden Society

Like our gardens, the society is entering the dormant season, hoping to blossom again in the spring.

Increasing concern about outdoor gatherings in the run up to the 'rule of six' led to the cancellation of the social planned for September. We know many people were looking forward it and we're sorry it couldn't take place.

The final 'front garden of the month' award for 2020 goes to Geraldine I'Anson and John Lusk at *Mint Cottage* in School Hill (above). They also garden the border on the opposite side of the road in front of the sub-station.

---





## Steaming through Winchelsea

The *Sussex Belle* came through Winchelsea station on the evening of 10th September. The day trip from London took in Eastbourne and Hastings and passed along our bit of track to Ashford, then back to London again. Photo by Annie Spencer.

[www.hastingsobserver.co.uk](http://www.hastingsobserver.co.uk)

---



## Literary Society

Pictured is Lorna Challand with a floral tribute from Literary Society. Lorna recently stood down as chairman after several years of leading the society with dedication, gracious charm and learned insight.

To show their appreciation, members also had a collection and Bill Doherty presented Lorna with a £50 book token and £150 for a treat of her own choosing.

Lorna's leadership will be greatly missed. Vice chairman Tony Moore will chair the committee until the next AGM.

Our next Zoom meeting is on 9th October at 7pm for 7:30, a Members' Evening on the theme of *The Social Spectrum*. Everyone is welcome.

Our next speaker will be Samantha Harvey talking about her latest book *The Great Unease*. This will take place by Zoom on 23rd October.

If you aren't a member, get in touch to give us a free try. Contact Hilary Roome for information [roome12hilary@gmail.com](mailto:roome12hilary@gmail.com)

---

*Lorna writes,* I would like to thank the members of the Literary Society for the generous and thoughtful gifts they sent me in acknowledgement of my term as Chair of the Society. I was delighted to receive them but will let the Bard express my heartfelt gratitude in words so much better than my own, “I can no other answer make but thanks, and thanks, and ever thanks.”

---



## **Second Wednesday on Zoom**

The October talk will be on *Hopping in Kent* given on Zoom by Sue Duckworth. 14th October at 2 for 2.30pm.

---



## **Sound of Music**

The church was alive with the sound of music for the first time since lockdown began. On 19th September, four members of the Rye Bay Crew entertained as full a house as the rules would allow.

Rebekah Gilbert, Jonathan Breeds and Andi Rivett were accompanied by Anne Marshall and performed songs by Richard Rogers, Leonard Bernstein, Kurt Weill, Tom Lehrer and more.

Sponsorship and ticket sales raised a welcome £680 for church funds.

[www.ryebaycrew.co.uk](http://www.ryebaycrew.co.uk)

---



## **Hastings Philharmonic at Winchelsea Arts**

On Saturday 14th November, Winchelsea Arts restarts its series of concerts with a recital by the Hastings Philharmonic Chamber Orchestra under the baton of Marcio da Silva.

They will be performing an evening of glorious, uplifting music which will be a fitting tribute to Winchelsea Arts' return to safe and live concerts in St Thomas' Church.

Critics have praised Marcio for handling 'his forces with great skill, shaping musical lines to beautiful effect and splendid impact.'

The orchestra will perform four string pieces:  
Sibelius - Romance in C  
Elgar - String Serenade  
Nielsen - Bohemian Danish Folk Tune  
Tchaikovsky - String Serenade

To ensure maximum safety there will be 36 ticket zones in the church. Further details about concert arrangements can be found on the Arts website. Tickets are priced at £35 for a double and £20 for a single and will include a glass of wine.

[www.winchelsea-arts.org.uk](http://www.winchelsea-arts.org.uk)





## **1066 Country Walk**

A project is under way to revive and publicise the *1066 Country Walk* which was established some thirty years ago linking footpaths between Pevensey and Rye.

The walk comes through Winchelsea and the plan is that an interpretation panel will be sited at the station with another in the town. There will be new publicity, signage, maps and pop-up events to publicise the route to walkers.

[www.ldwa.org.uk](http://www.ldwa.org.uk)

---



## **Winchelsea Corporation**

A team were at work in early September removing vegetation growing on the roof and from cracks in the masonry of the Strand Gate. They did the job partly from ladders and partly by abseiling.

The Corporation ensures that this work is done as a condition of the 2008 English Heritage grant that helped fund much-needed restoration work to the gate.

We are very grateful to the Friends of the Ancient Monuments whose fundraising work has covered the cost.

Though the Court Hall has Covid-19 precautions in place, it's obviously too small for the meetings that usually take place there so, for the time being, the Post Office on Monday and Thursday mornings will be the only regular user.

*David Page, Mayor*

[www.winchelsea.com/corporation](http://www.winchelsea.com/corporation)

[www.winchelsea-foam.org.uk](http://www.winchelsea-foam.org.uk)

---



## **Plant Sales**

We are delighted to report that the magnificent sum of more than £1,100 was raised from the four plant sales held this year, which will go to church funds.

We hope some may go to the maintenance of the churchyard, managing the grass, or planting new trees to replace those that have been removed in previous years.

A big thank-you to all those who supported the sales by growing and donating plants, offering plant pots, helping moving tables and of course purchasing the plants!

*Judith Payne and Ant Parker*

---

## **Church Annual Meeting**

Originally scheduled for March, the Annual Parochial Church Meeting will now be held at St Thomas' at noon on Sunday 11th October. Papers and the annual report are available on the church website or from the rector.



## Harvest Festival

Four of the wonderful displays made by Alice Kenyon, Celia King, Nigel Ashton and Charlotte Beecroft





## Poppy Appeal and Remembrance

It will probably be no surprise that things will be different this year. The one unchanging element is that Remembrance is a very personal thing; who is remembered and how they are remembered is a matter for individuals.

The change this year is that various associated rules have been set down by many others, which will affect what is actually allowed to be done in support of the Poppy Appeal and Remembrance in Winchelsea.

If you have any questions concerning that which follows, or any particular requirements with regard to purchases, please call John Rodley on 01797 223458.



### The Poppy Appeal

Unfortunately, there will be no house-to-house collection in Winchelsea this year, but it is hoped that a donation tin and poppies will be available at static locations. These are planned to be The Farm Kitchen, The New Inn, Winchelsea Lodge, the Co-op, Sutton's Shop, The Ship Inn - Jamie's Butchers and Winchelsea Sands Caravan Park.



The appeal will run from 26th October to 11th November, with the collection period ending on 9th November.

Items for sale will also be limited to poppies and, possibly, pin badges although there is a limited range of other stock left over from last year. Other items can be purchased, but this must be done via the website [www.poppysshop.org.uk](http://www.poppysshop.org.uk)

### **Donations**

will be gratefully accepted by the Royal British Legion, with gift aid being encouraged. A stock of gift aid envelopes will be available in St Thomas' for cash or cheques (made payable to RBL Poppy Appeal) and these should be placed in the Black Box before 11th November.

Alternatively, donations can be made electronically to the RBL, Sort Code 30-11-75, account number 01937121, using the payment reference SFF 24.

---

## **Acts of Remembrance on 8th and 11th November**

On Remembrance Sunday, 8th November there will be a traditional Act of Remembrance and wreath laying at the War Memorial at 11am. Because of the exceptional circumstances there won't be a Service of Remembrance after the ceremony but a short said Eucharist will take place in Church.

Appropriate wreaths have been procured for the following - Corporation, IPC, RN, Army, RAF, CAF, Rotary, Church and School and will be charged for if used. If not, they will be held over for next year. Wooden crosses will be placed on the war graves in the churchyard.

On 11th November two minutes' silence will be observed at 11am at the Memorial as in past years.

---



## **Grand Christmas Raffle**

A raffle in aid of the New Hall and the Rye Food Bank.  
The draw takes place on Tuesday 8th December.

We have some more really interesting prizes for the  
above including:

£100 cash Prize

A stylish Handmade Quilt

Christmas Hamper from The Farm Shop

£50 Voucher from Ethel Loves Me

Voucher from Garden Gems


Handmade Chocolates

There are many more prizes in store for you to  
choose from.

Tickets at £1 each will be available from  
1st November from Winchelsea Farm Kitchen  
or by phoning 01797 227690.

More details in the November issue.

---



Come help light up the trail and join  
in

**Winchelsea Christmas  
Advent Windows 2020**

a beacon of hope in these dark days.

Be it a decorated window, a tree,  
a star, or just a light or two,  
show your support from  
Sunday 6<sup>th</sup> December  
until Thursday 31<sup>st</sup> December  
(17.00-22.00)

To sign up or for further information  
please contact John & Lyn Davidson

(01797) 223754

[lyn.davidson@outlook.com](mailto:lyn.davidson@outlook.com)

All proceeds in aid of St Thomas',  
Winchelsea

# Light up Winchelsea

The New Planning Group for Advent Christmas Windows 2020 are keen to bring an abundance of lit and decorated Windows together with a 'Trail of Light' to our amazing Town.

The Windows will be lit at different stages from Sunday 6th December through to 20th December between 5pm and 10pm, and onwards until 31st December.

We are hoping that everyone will want to participate, considering the year we are experiencing – this is one thing that can happen despite Covid.

To encourage you all, there will not be a specific theme, it will be your choice, anything that celebrates Christmas can be used, whether very simple or otherwise. Just decorate and light one or more windows in your house and you will be included on the trail.

Many social events have been cancelled this year, so we hope that, through the Advent Christmas Windows, we can come together as a Community to celebrate Christmas safely.

We hope to make the magnificent windows of St Thomas' Church the centrepiece of the event. All proceeds will go to the Church and as we are not asking for sponsorship from local businesses this year, we will be dependent on our own efforts, through sales of small crafts, cards and donations.

You may want to simply donate a window in your house for someone else to decorate, although we will offer loads of support for those people who are unsure of what to do. You may wish to be involved also in the making of small crafts for sale to help raise funds – please let us know.

The Planning Group are Shirley Meyer, Richard Plumb, Ali Casey, Chris Chappell, and Lyn and John Davidson.

Lyn and John Davidson [lyn.davidson@outlook.com](mailto:lyn.davidson@outlook.com)  
01797 223754



exercise and industriously follow some lawful trade or employment’.

Particular reference was then made 'to those adjudged to be guilty of illegal landing, running, unshipping, concealing or carrying prohibited goods liable to the payment of duties of customs or excise'.

This specific reference to smugglers was something of a problem for the constables because the six or seven mile seashore between the Kent boundary and Pett, part of what was known as the Liberty of Winchelsea, was an ideal place for smuggling and the constables were probably smugglers themselves!

Anyway, eight days after receiving these instructions the constables returned to court to report that 'they had not as yet found any person or persons within the meaning of the Act in Winchelsea or the Liberty thereof'.

The court then adjourned for a further eight days with the same result. Yet another adjournment took the matter no further. At that point Winchelsea's court records fall silent on this subject but what is definitely known is that when Captain Ballard of the Board of Admiralty arrived in Winchelsea to collect the town's conscripts there was nobody to collect!

*Malcolm Pratt*

---





## **A wine society for Winchelsea?**

Looking ahead to the prospect of better times, a few of us have been exploring the re-establishment of a Wine Society (or Association).

In addition to the potential social benefits of doing this in the town, there is the possibility of establishing a small annual wine festival, to help enhance the life and economy of the area.

If the society succeeds there may be the opportunity also to engage with the increasing number of local vineyards in our area, which could hark back to the historic role of Winchelsea as a major importer of French wine.

Obviously, this needs local support and the first step is to obtain views. If you think you might be interested, or have any other views please would you let us know by emailing [brianleonard779@gmail.com](mailto:brianleonard779@gmail.com) or dropping a note in to 2 Five Houses, North Street.

David Page, John Rodley, Stuart Raine and John Clarke are already involved in discussions about this, and you could pass your thoughts directly to one of them. If there does seem to be support for this idea, it will be developed further via a properly protected meeting.



## Parking in Rother District

Powers to enforce parking restrictions across the district transferred to East Sussex County Council from Sussex Police on 29th September.

Locally, this most affects parking in Rye but it may mean that yellow lines elsewhere in the district are enforced more regularly.

The county council, which already operates civil parking enforcement in three of the county's five districts and boroughs, applied for the powers in response to concerns about a lack of enforcement.

More information can be found at

[www.eastsussex.gov.uk/roadsandtransport/parking/](http://www.eastsussex.gov.uk/roadsandtransport/parking/)

---



## Masks

The mask-making team (Shirley, Berni and Sandra) would like to thank all those who donated towards or bought a face mask over the summer, enabling us to give £380 to St. Thomas' Church and £100 to the Rye Foodbank.

Please don't forget to wash your face mask regularly and wear it in all the required places.

Best wishes, The team





## **Pett Level Independent Rescue Boat**

It's now October and times continue to change! Here at Pett Level Independent Rescue Boat, our volunteers hope our friends and supporters from across the Winchelsea Parish remain safe and well.

Since our last update we've continued to be busy, with another rejig of social distancing arrangements so that we remain compliant as we work. Before the current limitations, we managed to squeeze in a few community activities:

Our volunteers took part in the Big Beach Clean Up of Fairlight Cove. Volunteers at StrandlinersCIC completed eight sessions of clearing, sorting and bagging plastic pollution and rubbish from the cove.

Then, on 6th September, the PLIRB boats, full of our own volunteers, launched to retrieve the 101 bags of rubbish and bring them to Pett Slip, to be collected by Rother District Council.

At the boathouse, we've been giving First Aid to visitors to the beach who have needed assistance, mainly for cuts and grazes due to slips and falls.

PLIRB Helm and Launch Authority Steve Hill took part in a *Behind the Story* video made by *The Times* and *Sunday Times*.

Our AGM has now been held and Fiona Johnson has now passed the position of Chair of the PLIRB committee to volunteer Kev Nuttall.

With a real gap between our charity's income and our running costs, due to the complete shutdown of our community fundraising, we've started to have some amazing help from friends and local businesses:

Local company Static Trader, of Rye Harbour, have stepped in to help us out by sponsoring our printing for the coming year. As a result, we've been able to print new stocks of our charity greetings cards. These are available for sale from the boathouse on Sundays, but from this month should also be available for sale via our Facebook page. Our popular calendars should also be available soon too.

Marian Mason of Ocean Ceramics ran her annual 'Mad Hatters' event in a socially distanced way, and raised £86.50 for us.

Sean O'Sullivan (pictured), of SOS Entertainment, carried out a 54 mile charity bike ride on behalf of PLIRB on Saturday 26th September. His *giving page* is still open and with this and cash on the day, his own pedal power has raised an amazing £600, which will certainly help towards our costs.

And coming up? Our first virtual fundraiser, our *Pawfect Pet* photo competition is now open, and runs until 5pm on 11th October. This fun photo competition will be judged by comedian and friend of PLIRB, Jo Brand, so if you want to join in please do.

Details on this are linked above, plus on our website at <https://plirb.com>.

---

## **Shirley Meyer Forthcoming Exhibition**

Friday 30th October - Thursday 5th November  
Artwrite, Cinque Ports Street, Rye



I am delighted to let everyone know that after a frustrating year of cancelled events and opportunities at which to show and sell artwork, I will be having a small exhibition at the gallery adjoining Artwrite, Rye.

There will be a mixture of lino prints, mixed media work and greetings cards.

Some work is framed and ready to hang and there will be a selection of pieces available in the browser. I will be working in the gallery most of the time so please come along and have a chat and a look round. Great Christmas presents!

Did I really mention that?!

Hope to see you there.

Shirley.





## Rye Food Bank stocks up for winter

Details for donation by direct transfer are  
'Bexhill Food Bank, Rye Branch'  
Barclay's 20-54-25 a/c 83501116.

Cheques can be made out to  
'Bexhill Food Bank (Rye Branch)' and sent to  
C. Emson, 24 North Salts, Rye, TN31 7NU.

Please continue to donate if you can.

[www.ryenews.org.uk/news/food-bank-must-stock-up](http://www.ryenews.org.uk/news/food-bank-must-stock-up)

[www.trusselltrust.org](http://www.trusselltrust.org)

---

### **LARGE GARAGE TO LET**

In Mill Road, Winchelsea TN36 4HJ  
£65 pcm. Electricity and water supplied but  
not included. Outside light.  
Christine Franklin 07788 710118

## Winchelsea Church and Town Diary

### October 2020

**Sunday 4th**      **9.30am: Parish Eucharist at Icklesham**  
*Trinity 17*      **11am: Parish Eucharist at St Thomas'**

Friday 9th      Literary Society Members' Evening on Zoom

**Sunday 11th**      **9.30am: Parish Eucharist at Icklesham**  
*Trinity 18*      **11am: Parish Eucharist at St Thomas'**  
Church Annual Meeting after the service

Wednesday 14th      Second Wednesday Society Talk on Zoom

**Sunday 18th**      **9.30am: Parish Eucharist at Icklesham**  
*St Luke*      **11am: Parish Eucharist at St Thomas'**

Friday 23rd      Literary Society Talk on Zoom

**Sunday 25th**      ***Clocks go back***  
*Last after Trinity*      **9.30am: Parish Eucharist at Icklesham**  
                                 **11am: Parish Eucharist at St Thomas'**

**Sun 1st Nov**      **9.30am: Parish Eucharist at Icklesham**  
*All Saints*      **11am: Parish Eucharist at St Thomas'**

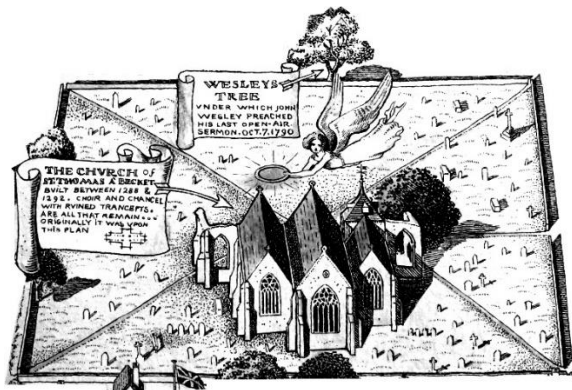
---

**For Winchelsea Beach information go to**  
[www.winchelseabeachcommunityassociation.co.uk](http://www.winchelseabeachcommunityassociation.co.uk)

**For Winchelsea information go to**  
[www.winchelsea.com](http://www.winchelsea.com)

**For more information about the Church go to**  
[www.winchelseachurch.co.uk](http://www.winchelseachurch.co.uk)

**For weekly news about the local area go to**  
[www.ryenews.org.uk](http://www.ryenews.org.uk)



## **Rector of Winchelsea and Icklesham**

The Revd Jonathan Meyer

The Rectory, St Thomas Street, Winchelsea TN36 4EB

01797 226254 [revdjonathan@btinternet.com](mailto:revdjonathan@btinternet.com)

The Rector's day off is Monday

## **Churchwardens**

Charlotte Beecroft

Burrin House, North St TN36 4HX

01797 223159 [ccmburrin@gmail.com](mailto:ccmburrin@gmail.com)

Celia King

Stargazer, Morlais Place TN36 4LG

01797 227858 [sake.king@hotmail.com](mailto:sake.king@hotmail.com)

## **PCC Secretary**

Angela Hill

Friars Halt, Friars Road TN36 4ED

01797 226325 [angelam.hill@btinternet.com](mailto:angelam.hill@btinternet.com)

## **Parish Treasurer**

Pamela Jefferies

Wee Five, Sea Road TN36 4LH

01797 222904 [pamela.jefferies@sky.com](mailto:pamela.jefferies@sky.com)

**Gift Aid** David Jefferies

## **Electoral Roll Officer**

James Payne

Evans, Rectory Lane TN36 4EY

01797 224861 [evenswinchelsea@gmail.com](mailto:evenswinchelsea@gmail.com)

## **Organist**

David Birchenough

07840 595338 [daviddaorganist@icloud.com](mailto:daviddaorganist@icloud.com)

### **St Thomas' Choir**

Marion Lovell

7 Oast House Field, Icklesham TN36 4BP

01424 815247 [marion@abingworth.plus.com](mailto:marion@abingworth.plus.com)

### **St Thomas' Primary School**

*Headteacher* Carol Gardiner

Friars Road TN36 4ED

01797 226479

[office@st-thomas-winchelsea.e-sussex.sch.uk](mailto:office@st-thomas-winchelsea.e-sussex.sch.uk)

### **St Richard's Chapel Warden**

Mary Parker

Solstice, Sea Road TN36 4LH

01797 229798 [maryalan.parker@btinternet.com](mailto:maryalan.parker@btinternet.com)

### **St Richard's Secretary**

Pamela Jefferies 01797 222904

### **St Richard's Treasurer**

David Jefferies 01797 222904

### **Friends of Winchelsea Church**

*Chairman* Ben Chishick

Tower Cottage, Barrack Square TN36 4EA

01797 226653 [towercottage@btinternet.com](mailto:towercottage@btinternet.com)

*Treasurer* Stephen King

Stargazer, Morlais Place TN36 4LG

01797 227858 [stephenking408@btinternet.com](mailto:stephenking408@btinternet.com)

### **Parish Magazine**

*Editor* David Page

Rye View, The Strand TN36 4JY

01797 226524 [david@ryeview.net](mailto:david@ryeview.net)

