

# WINCHELSEA PARISH MAGAZINE

2nd September 2020



Harvest by Ant Parker [www.antparkerartist.com](http://www.antparkerartist.com)

Several people have asked how we make the magazine available to people who aren't online. Each month I create and print a 'digest' on two sides of A4 and Deborah Rodley delivers or posts it to the 20 or so subscribers we know can't access the digital version.

This is currently emailed to 230 people and is also posted on [winchelsea.com](http://winchelsea.com). It looks best on an iPad or tablet and I realise it's a bit cumbersome to sit in front of a desktop computer to read it. Some of you would much prefer to have a printed magazine in your hand, though of course this is a more laborious option for the volunteers who produce and distribute it.

There will be a meeting soon to decide what is desirable and what is possible for the future. Your views would be appreciated.

David Page [david@ryeview.net](mailto:david@ryeview.net) 01797 226524

# A LITTLE LIGHT MUSIC

TO INCLUDE SONGS FROM THE SHOWS  
AND SOME HUMOROUS  
FAVOURITES



**Rebekah Gilbert - Mezzo**  
**Jonathan Breeds - Baritone**  
**Anne Marshall - Piano**

at

St Thomas' Church

Saturday 19th September 5.30 to 7pm

Buy ticket in advance £10 or £20 for a double  
(to include a glass of wine) In aid of Church Funds  
from Charlotte Beecroft - 01797 223159

Social distancing rules must be observed and masks worn  
No entrance on the door – entrance by ticket only



## **Reflections from the Rectory**

As things have eased after lockdown, I think it is gradually sinking in that many of the restrictions to our daily lives will need to continue for some time. We have got used to changes in the regulations and there is no doubt that things change quickly and may change again, but the underlying direction is likely to be continued vigilance.

I know this has been immensely frustrating for our church schools in Icklesham and Winchelsea. The teachers and particularly the head-teachers have had to react to changing instructions, some of which seem difficult to follow or are impractical.

As a governor I know that their focus is always on continuing to serve the children and their families to the best of their ability. It was good to see good numbers back at school at the end of term last month. I know that the children that were able to return were delighted. Everyone hopes the schools will be able to build on that excellent grounding.

Of course it is not just schools that have struggled, shops, small business and our pubs are in a similar situations. We are all having to get the mask habit.

I have heard it said that the widespread use of masks by the Japanese dates back to Spanish 'flu. So it lasted 100 years for them. I hope that won't be our experience.



"So, does everyone have sound?

In church we feel that for the moment we have reached some kind of equilibrium. Masks are required in a place of worship but there is some freedom for the priest and readers and of course they can be removed to receive communion. However it does make church feel strange and I know some have felt it removes its spiritual dimension.

As I read the Psalm for Morning Prayer the other day I was struck by this verse.

It is good for me that I have been afflicted  
that I may learn your statutes.

*Psalm 119, verse 71.*

The Psalmist writes from the understanding that the presence of God is around us in a myriad of ways and that part of life's journey is to discern God's presence and to learn from it. Many people feel we can learn from the experience of this virus and I have no doubt we have learned some lessons already.

The challenge will be to remember them. It is not that we seek to explain away the difficulties or even not to

allow ourselves to wonder why this has happened and has touched so many lives adversely; it is just that on life's journey we should learn from experience.

The experience for our schools and teachers has been to emphasise the importance of our children and of how we can give them confidence at such times and the example of those who have had to work so hard to do this is humbling.



In church it is true that wearing masks seems strange and unworldly but I believe we are called to make sense of this measure and to learn from it. There are so many lives restricted by social deprivation, by intolerance by the lack of simple sanitation or a reasonable health service that it should not be too much of a sacrifice for us to wear a mask when we are asked and to remember those who suffer more profoundly.

*Jonathan Meyer*

### **Services for September**

Unless there is an unexpected change there will be a said Parish Eucharist at St Thomas' on each Sunday in September at 11am. Services at St Richard's continue to be suspended.

### **Church Market**

There won't be a Church Market in September.



## **Peter Mackenzie Smith**

We record with sadness Peter's death on 20th August after a recurrence of cancer. Guiding cellar tours and leading history walks round Winchelsea and Rye, Peter was well known in the town, as is the garden at *Backfields End* which he and Sandra opened for charity. Peter was for several years a trustee of the Rye Arts Festival.

[www.ryenews.org.uk/peter-mackenzie-smith](http://www.ryenews.org.uk/peter-mackenzie-smith)

---



## **Winchelsea Beach Community Hall**

The Hall is re-opening on 1st September after a deep clean. All bookings are subject to government conditions. *Jill Bruce*

[www.winchelsea beachcommunityassociation.co.uk](http://www.winchelsea beachcommunityassociation.co.uk)

---





## **New Hall Christmas raffle**

The New Hall Committee believe we will all need cheering up this coming Christmas. There can't be the usual Christmas Fair so we are going to have a Grand Christmas Raffle in aid of the New Hall and the Rye Food Bank.

The draw will take place on Tuesday 8th December and tickets will be available from 1st November.

The wonderful prizes include

A Treat at The Rye Retreat

A Land Rover Tour of Rye Harbour Nature Reserve

A Jeroboam of Rioja

A Vineyard Tour

and lots of vouchers for various goodies.

We hope you will support us, and more information on prizes and how to purchase tickets will be forthcoming in future issues of the magazine.

## **Annual General Meeting**

The New Hall management committee and trustees announce that the Annual General Meeting will be held in the hall at 10.30am on Saturday 26th September. All are most welcome. Full Covid-19 protection measures will be in place for your safety.





## **Winchelsea Corporation**

Of Winchelsea Corporation's three key functions, two are in abeyance. The Museum has been closed and will remain so for the rest of the season. Understandably, there have been no civic events in Cinque Ports towns and the mayoral robes have remained in the wardrobe, we hope unassaulted by moth.

The Corporation's third role, caring for the ancient monuments of the town, has continued. The closure of the Museum has given us the opportunity to redecorate it completely and we hope to have this done this autumn, depending on the tenders we receive.

Work is also needed to re-make the Court Hall entrance door, and the west-end gable needs some potentially costly restoration which will involve fundraising and grant applications. None of this has taken us by surprise; the Corporation has a rolling five-year maintenance plan for the Hall and the gates.

Many of the smaller jobs are done by members of the Corporation themselves - removing weeds and ivy, and clearing pigeon droppings from turret of the Strand Gate. All of us went on a walk-round in August to remind ourselves what needs to be done, and all of the monuments now have a dedicated team of two or three freemen to look out for them.

Removing weeds from the tops of the gates is a job for specialists and abseilers will be on site at the Stand Gate in early September.

Work on registration with the Charity Commission has continued and we have been checking that our insurance properly covers the specialist risks that ancient monuments and irreplaceable historical artefacts throw up. Part of that process has involved making a new photographic record of everything, not least the medieval mayor's seal pictured above.

We have made a Covid-19 risk assessment of the Court Hall in preparation for its coming back into use. The Post Office is operating again but obviously the spaces are small and so most other activities are unlikely to resume until distancing rules change.

Apologies to our Court Hall neighbours who have had a couple of early wake-up calls when the alarm was set off by birds flying around inside the Museum. We have no idea how they got in but we are working on it.

*David Page, Mayor*

---

## **The Lookout**

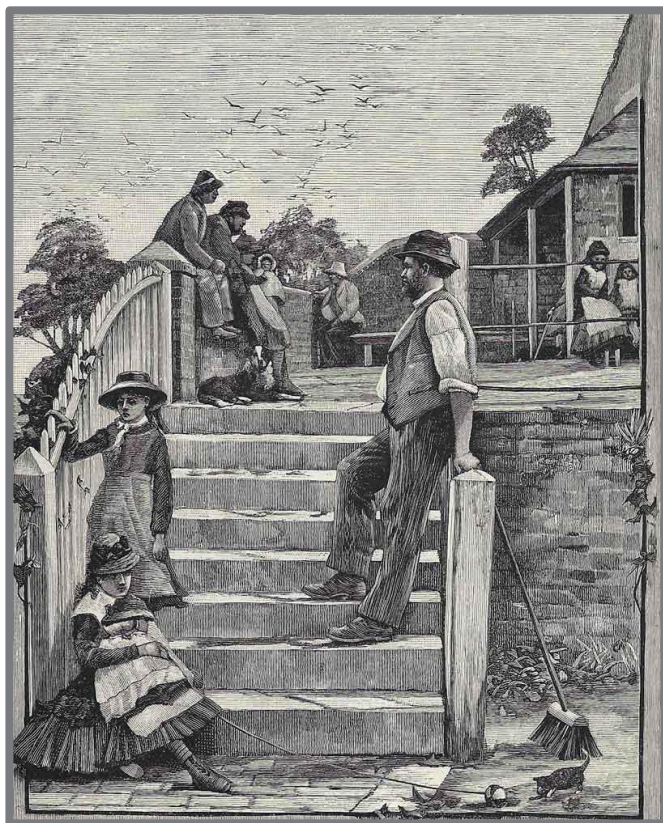
The Lookout was built in the 1860s and the engraving below dates from about twenty years later. It is one of the structures in the town that the Corporation still owns. It is maintained by Icklesham Parish Council.

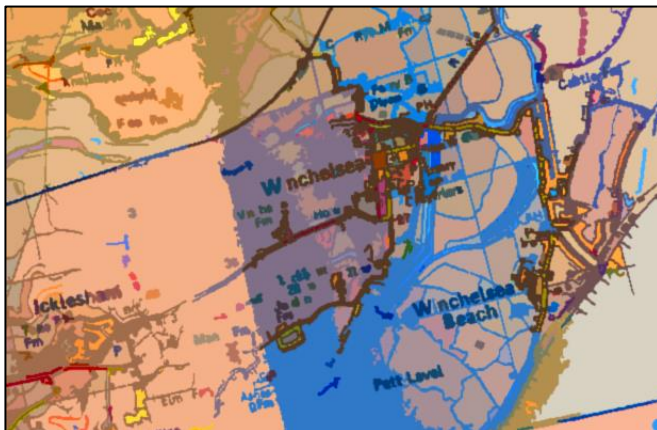
The shelter seems to have been built to allow visitors and locals somewhere comfortable to sit and admire the view. Rumour spread widely beyond the town that men were paid to keep watch for French or German invaders, and local characters acted out the idea, as Malcolm Pratt amusingly describes in *Winchelsea - A Port of Stranded Pride*.

The actual function of The Lookout was set out more accurately by Ford Madox Ford: 'Here, on a rainy day, one may sit and enjoy life at leisure... The whole expanse of Romney Marsh is visible on the left and, on

the right, the full sweep of the Channel. One may sit there and lazily read, glancing occasionally at the small figures of the people wandering along the road towards the sea.

‘One may, if one cares, speculate on who they are , where they are going, why they are none of them a whit better than they should be, and, if it is a soaking day, on how wet they will get. For the patron of the nook is, without doubt, Dame Gossip.’





## **Icklesham Parish Council**

### **Parish Clerk**

The Clerk, Mrs Evett, has now left the Council. The deadline for applications to replace her closed on 27th August and the Council is in the process of finalizing a shortlist of candidates for interview.

**The Planning Committee** continues to meet regularly twice a month via zoom. The last meeting considered a highly controversial application in Rye Harbour, that is affecting many of the local residents. Residents are able to speak to the Committee at the beginning of the meeting. To do so please contact the Deputy Clerk for details of how to join the meeting.

### **Road closure at Fairlight**

Residents of Winchelsea Beach Ward will know that Stagecoach have suspended the bus service for the duration of the road closure at Fairlight.

East Sussex County Council have provided an alternative service between Rye and Fairlight Cove, through Hams Travel. You will find the timetable below.

Your Councillors are here to represent you and welcome your views on any matter. Please do talk to them or email the Parish Clerk at [ickleshampc@hotmail.co.uk](mailto:ickleshampc@hotmail.co.uk) or write to PO Box 395, Hastings TN34 9JU

*Cllr Peter Turner*



## Two Lit Soc meetings in September

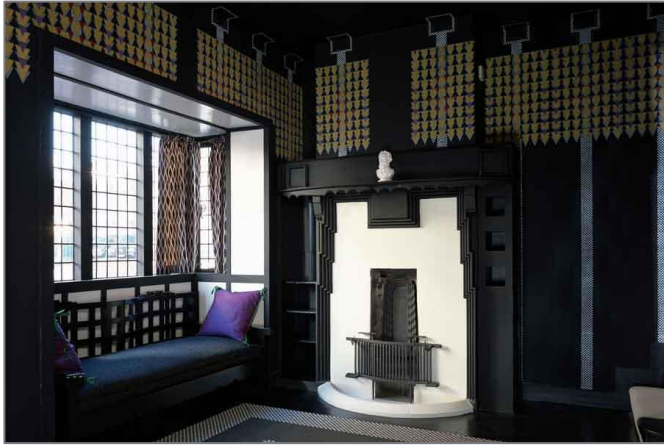
On Friday 18th September our scheduled speaker, Patricia Erskine-Hill, will give her illustrated talk *Printing, Literacy and Book Selling in Early Renaissance Venice*.

Patricia previously spoke to us about Dante's *Inferno* which was a fascinating and most entertaining talk. Patricia is a professional lecturer on European History, Literature and Art. We are very fortunate that she is prepared to talk to us again.

We will meet at 7pm for 7.30pm (there is half an hour at 7pm for some chat). Zoom invitations will be sent the day before.

Before then, on Friday 4th September, we will have a members' evening on the theme of *Travel*. This can be travel writing or writing about travel. Feel free to join in, with or without a reading of your own, all are welcome. Zoom invitations will be sent the day before.

On 23 October, Samantha Harvey, author, will talk about her latest book. Her talk is entitled, *The Shapeless Ease: the accidental writing of a memoir*.



## 78 Derngate

Second Wednesday are offering a Zoom talk on 9th September. The topic is *Charles Rennie Mackintosh...with particular regard to 78 Derngate, Northampton* and the speaker is Barbara Floyer

78 Derngate, a small terraced house in Northampton, was dramatically remodelled by architect Charles Rennie Mackintosh in 1916/17, his only house design in England. Commissioned by the thoroughly modern W J Bassett-Lowke, Mackintosh transformed 78 Derngate into a house of unique charm and international importance.

Barbara Floyer is one of the founder members of *The Friends of 78 Derngate* and was Assistant Manager at the Mackintosh House from its opening in 2004 until she retired in 2016. She continues to be a volunteer guide and active member of The Friends of 78 Derngate. The images will be lush and the story fascinating; Barbara will also update us on other interesting Mackintosh architectural conservation projects currently underway.

Hilary Roome will send out the Zoom invitation the day before the talk.

The October talk will be on *Hopping in Kent* given on Zoom by Sue Duckworth.





## Garden openings 2021

In the hope of better times, the Winchelsea open gardens team are signing up for 2021. The proposed dates are Saturday 17th April - two weeks after Easter - and Saturday 19th June.

In a normal year, upwards of £10,000 would be raised through the opening of the town's gardens. None of this has been possible in 2020.

The NGS has managed to open some larger gardens elsewhere with timed tickets bookable online but nationwide the money raised has been less than 20% of normal and the nursing charities the NGS supports have missed out as a result.

Various Kent and Sussex gardens open this month and you can find out how to book a visit by checking the NGS website.

[ngs.org.uk](https://ngs.org.uk)

---





## Winchelsea Garden Society

'Front Garden of the Month' for August was *The Limes* in Hiham Green (above), the work of Suzi Falber Crick.

Judith Payne and Ant Parker have been busy propagating plants for what may be their last plant sale of 2020. If you have gaps in your borders or just want to brighten up your garden with new plants now is the time to join them on Saturday 5th September. The sale starts at 10.30 am in Judith's drive - *Evens*, Rectory Lane, Winchelsea.

After a very successful and properly distanced garden social at *The Armoury* in August, the Society is inviting members to another one on Wednesday 9th September from 5.30 till 7pm at *Cleveland House*. We are very grateful to Sarah and Jonathan Jempson for allowing us to enjoy their garden.

---



## Winchelsea Arts

Things are looking very positive for a resumption of the Winchelsea Arts programme at St Thomas' with possible concerts in November, March and May. More news soon.

[www.winchelsea-arts.org.uk](http://www.winchelsea-arts.org.uk)

---





## **Be careful you bathers!**

Recently via *Rye News* it came to the notice of this correspondent that all is not well with sewage disposal into our local rivers and hence Rye Bay.

Southern Water have been fined £126 million for deliberately misreporting sewage overflow spillages after heavy rain. This has led to effluent discharge for hundreds of hours into the Rother and Tillingham as well as other spills in the Rye area such as at Rye cricket salts, Winchelsea Road, and Wish Street. Southern Water have asked walkers to become “Pollution Spotters”

You can [access via this link](#) a very informative article earlier in the summer from *Rye News*. While the local rivers clearly could represent a health risk, the article did not cover Rye Bay itself.

*John Spencer*

---



## Winchelsea anniversaries

### 650 Years Ago

There must have been great excitement in Winchelsea in 1370 when, by royal command, the English fleet gathered in the harbour at The Camber.

In the twenty-first century it is quite difficult to understand that this was, as W D Cooper comments in his *History of Winchelsea*, 'as much a place for dispatching the fleet and embarking troops as Portsmouth or Spithead at the present day'.

On 3rd July in that year a courier had been sent to Winchelsea 'with letters of Privy Seal' requiring the mayor and bailiffs to state how many ships had by then arrived. At the same time messages were also sent to admirals stationed in ports in all parts of the country ordering them to 'detain' ships for the forthcoming expedition 'and hasten to take them to Winchelsea and Rye' (which shared the harbour in those days).

As the fleet gathered in response large sums of money were sent to Winchelsea to pay the crews and the soldiers. Lord John de Neville, Admiral of the Fleet, and others were required to find as many armed men and archers as could ensure the safe passage of the fleet.

The steward of the king's household was sent to ensure all was well. The massive size of the whole operation is perhaps best emphasised by the fact that 8,464 horses were embarked besides the footmen and archers.

In command as the expedition crossed the Channel and embarked in France was Sir Robert Knollys whose instructions were to conduct a chevauchée.

A chevauchée was an activity intended to cause as much destruction of property and annoyance as possible without risking engagement with any force except one small enough to be easily defeated.

The fact that ordinary people were generally enormously disadvantaged by such a raid while it had almost no impact on the military or royal authorities seems considerably less than praiseworthy.

However, it was not a one way traffic. The principal Hundred Years' War raids on Winchelsea which happened ten years before this incident and ten years later were good examples of the enemy employing very similar tactics.

*Malcolm Pratt*

---



## Christmas Windows 2020

As the Autumn approaches thoughts move on to Christmas. To mark the end of this crazy difficult year let us celebrate Winchelsea by lighting up even more wonderful Christmas Windows.

Winchelsea Christmas Windows have proved to be a very successful annual event and we would love to hear your ideas and ways in which you would like to be involved.

As there will not be a community meeting to facilitate this, we would be grateful if you could communicate with us directly. We look forward to an enthusiastic response.

Lyn and John Davidson  
01797 223754 07837 760135  
[lyn.davidson@outlook.com](mailto:lyn.davidson@outlook.com)  
[john.davidson47@outlook.com](mailto:john.davidson47@outlook.com)

---





## **Rotary walk and ride**

All participants from Winchelsea please meet at 9am at the hairpin bend on the A259 near Station Road for the Rotary Community Walk on Sunday 6th September. Entry £10 and sponsorship forms are also available.

For the Rotary cycle ride “Tour de Romney Marsh’ please meet from 9am onwards on Sunday 27th September in the Channons area of Rye Market Car Park.

[ryerotary@gmx.com](mailto:ryerotary@gmx.com) Info is also available on [facebook.com/rotaryinrye](https://facebook.com/rotaryinrye) or on Twitter [@ryerotary](https://twitter.com/ryerotary).

*Stuart Raine*

---





There was an Old Lady of Winchelsea  
Who said, 'If you needle or pin shall see,  
On the floor of my room, sweep it up with the broom!'  
That exhaustive Old Lady of Winchelsea!

*Edward Lear*  
*illustrated by John Vernon Lord*

---

## **Rye Food Bank**

Details for donation by direct transfer are  
'Bexhill Food Bank, Rye Branch'  
Barclay's 20-54-25 a/c 83501116.

Cheques can be made out to  
'Bexhill Food Bank (Rye Branch)' and sent to  
C. Emson, 24 North Salts, Rye, TN31 7NU.

Please continue to donate if you can.

[www.trusselltrust.org](http://www.trusselltrust.org)

---

901 Shuttle Fairlight - Winchelsea Beach - Rye				week commencing Monday 24 August 2020			
Monday to Saturday							
Fairlight Cove, Hotel	07:07	08:07	09:07	11:07	13:07	15:07	17:07
Pett Level	07:13	08:13	09:13	11:13	13:13	15:13	17:13
Winchelsea Beach, Caravan Park	07:19	08:19	09:19	11:19	13:19	15:19	17:19
Rye Station	07:31	08:31	09:31	11:31	13:31	15:31	17:31
100 departure from Rye Stn to Hastings			09:37	11:37	13:37	15:37	17:37
101 departure from Rye Stn to Hastings	07:37	08:42					
100 arrival at Rye Stn from Hastings	07:26						
101 arrival at Rye Stn from Hastings		08:29	10:01	12:01	14:01	16:01	18:01
Rye Rail Station, stop A	07:37	08:37	10:07	12:07	14:07	16:07	18:07
Winchelsea Beach, Caravan Park	07:48	08:48	10:18	12:18	14:18	16:18	18:18
Pett Level	07:52	08:52	10:22	12:22	14:22	16:22	18:22
Fairlight Cove, Hotel	07:58	08:58	10:28	12:28	14:28	16:28	18:28
901 Shuttle Fairlight - Winchelsea Beach - Rye							
Sunday							
Fairlight Cove, Hotel	09:07	11:07	13:07	15:07	17:07		
Pett Level	09:13	11:13	13:13	15:13	17:13		
Winchelsea Beach, Caravan Park	09:19	11:19	13:19	15:19	17:19		
Rye Station	09:31	11:31	13:31	15:31	17:31		
100 departure from Rye Stn to Hastings	09:37	11:37	13:37	15:37	17:37		
101 arrival at Rye Stn from Hastings	10:01	12:01	14:01	16:01	18:01		
Rye Rail Station, stop A	10:07	12:07	14:07	16:07	18:07		
Winchelsea Beach, Caravan Park	10:18	12:18	14:18	16:18	18:18		
Pett Level	10:22	12:22	14:22	16:22	18:22		
Fairlight Cove, Hotel	10:28	12:28	14:28	16:28	18:28		

## Temporary Shuttle Bus Service for Fairlight Cove, Pett Level and Winchelsea Beach

providing connections at Rye with services to and from Hastings

Shuttle service operated by Hams Travel and organised by East Sussex County Council.

On journeys to Rye, passengers will not be picked up after the 'Royal Military Road' stop in Sea Road.

On journeys from Rye, the first stop for alighting passengers will be the 'Royal Military Road' stop in Sea Road.

## Winchelsea Church and Town Diary

### September 2020

Friday 4th	Literary Society Members' Evening on Zoom
Saturday 5th	Plant Sale at <i>Evens</i>

<b>Sunday 6th</b> <i>Trinity 13</i>	<b>9.30am: Parish Eucharist at Icklesham</b> <b>11am: Parish Eucharist at St Thomas'</b> Rotary Sponsored Walk
--	--

Monday 7th	First day of term, St Thomas' School
Wednesday 9th	Second Wednesday Talk on Zoom Garden Society Social

<b>Sunday 13th</b> <i>Trinity 14</i>	<b>9.30am: Parish Eucharist at Icklesham</b> <b>11am: Parish Eucharist at St Thomas'</b>
---	---

Friday 18th	Literary Society Talk on Zoom
Saturday 19th	Songs from the Shows - St Thomas' Church

<b>Sunday 20th</b> <i>Harvest</i>	<b>9.30am: Parish Eucharist at Icklesham</b> <b>11am: Parish Eucharist at St Thomas'</b>
--------------------------------------	---

Saturday 26th	New Hall AGM
---------------	--------------

<b>Sunday 27th</b> <i>Trinity 16</i>	<b>9.30am: Parish Eucharist at Icklesham</b> <b>11am: Parish Eucharist at St Thomas'</b> Rotary Cycle Ride
---	--

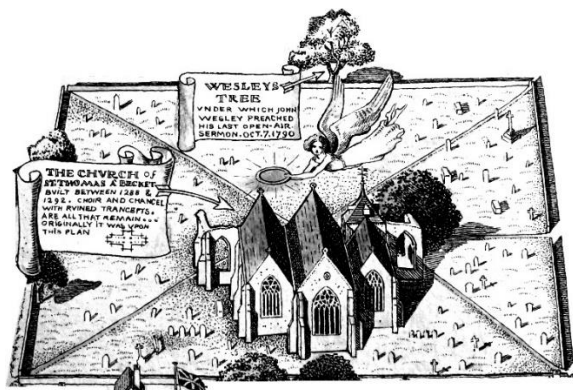
<b>Sun 4th Oct</b> <i>Trinity 17</i>	<b>9.30am: Parish Eucharist at Icklesham</b> <b>11am: Parish Eucharist at St Thomas'</b>
---	---

---

For Winchelsea Beach information go to  
[www.winchelseabeachcommunityassociation.co.uk](http://www.winchelseabeachcommunityassociation.co.uk)

For Winchelsea information go to  
[www.winchelsea.com](http://www.winchelsea.com)

For more information about the Church go to  
[www.winchelseachurch.co.uk](http://www.winchelseachurch.co.uk)



## **Rector of Winchelsea and Icklesham**

The Revd Jonathan Meyer

The Rectory, St Thomas Street, Winchelsea TN36 4EB

01797 226254 [revdjonathan@btinternet.com](mailto:revdjonathan@btinternet.com)

The Rector's day off is Monday

## **Churchwardens**

Charlotte Beecroft

Burrin House, North St TN36 4HX

01797 223159 [ccmburrin@gmail.com](mailto:ccmburrin@gmail.com)

Celia King

Stargazer, Morlais Place TN36 4LG

01797 227858 [sake.king@hotmail.com](mailto:sake.king@hotmail.com)

## **PCC Secretary**

Angela Hill

Friars Halt, Friars Road TN36 4ED

01797 226325 [angelam.hill@btinternet.com](mailto:angelam.hill@btinternet.com)

## **Parish Treasurer**

Pamela Jefferies

Wee Five, Sea Road TN36 4LH

01797 222904 [pamela.jefferies@sky.com](mailto:pamela.jefferies@sky.com)

**Gift Aid** David Jefferies

## **Electoral Roll Officer**

James Payne

Evans, Rectory Lane TN36 4EY

01797 224861 [evenswinchelsea@gmail.com](mailto:evenswinchelsea@gmail.com)

## **Organist**

David Birchenough

07840 595338 [daviddaorganist@icloud.com](mailto:daviddaorganist@icloud.com)

### **St Thomas' Choir**

Marion Lovell

7 Oast House Field, Icklesham TN36 4BP

01424 815247 [marion@abingworth.plus.com](mailto:marion@abingworth.plus.com)

### **St Thomas' Primary School**

*Headteacher* Carol Gardiner

Friars Road TN36 4ED

01797 226479

[office@st-thomas-winchelsea.e-sussex.sch.uk](mailto:office@st-thomas-winchelsea.e-sussex.sch.uk)

### **St Richard's Chapel Warden**

Mary Parker

Solstice, Sea Road TN36 4LH

01797 229798 [maryalan.parker@btinternet.com](mailto:maryalan.parker@btinternet.com)

### **St Richard's Secretary**

Pamela Jefferies 01797 222904

### **St Richard's Treasurer**

David Jefferies 01797 222904

### **Friends of Winchelsea Church**

*Chairman* Ben Chishick

Tower Cottage, Barrack Square TN36 4EA

01797 226653 [towercottage@btinternet.com](mailto:towercottage@btinternet.com)

*Treasurer* Stephen King

Stargazer, Morlais Place TN36 4LG

01797 227858 [stephenking408@btinternet.com](mailto:stephenking408@btinternet.com)

### **Parish Magazine**

*Editor* David Page

Rye View, The Strand TN36 4JY

01797 226524 [david@ryeview.net](mailto:david@ryeview.net)

